

# U.S. PUBLIC LAND SURVEY MONUMENT RECORD

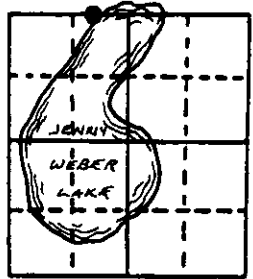
Note: This form is intended and designed to fulfill all requirements of Wisconsin Administrative Code, Chapter A-E 7.08 U.S. Public Land Survey Monument Record (3) (a) (b) (c) (d) (e) (f) (g) (h) (i). An additional sheet may be added if necessary to conform with said requirements.

(a) Corner location: Township 38 North

Range 9 East/West

Town/City/Village Sugar Camp

County Oneida



Section 35

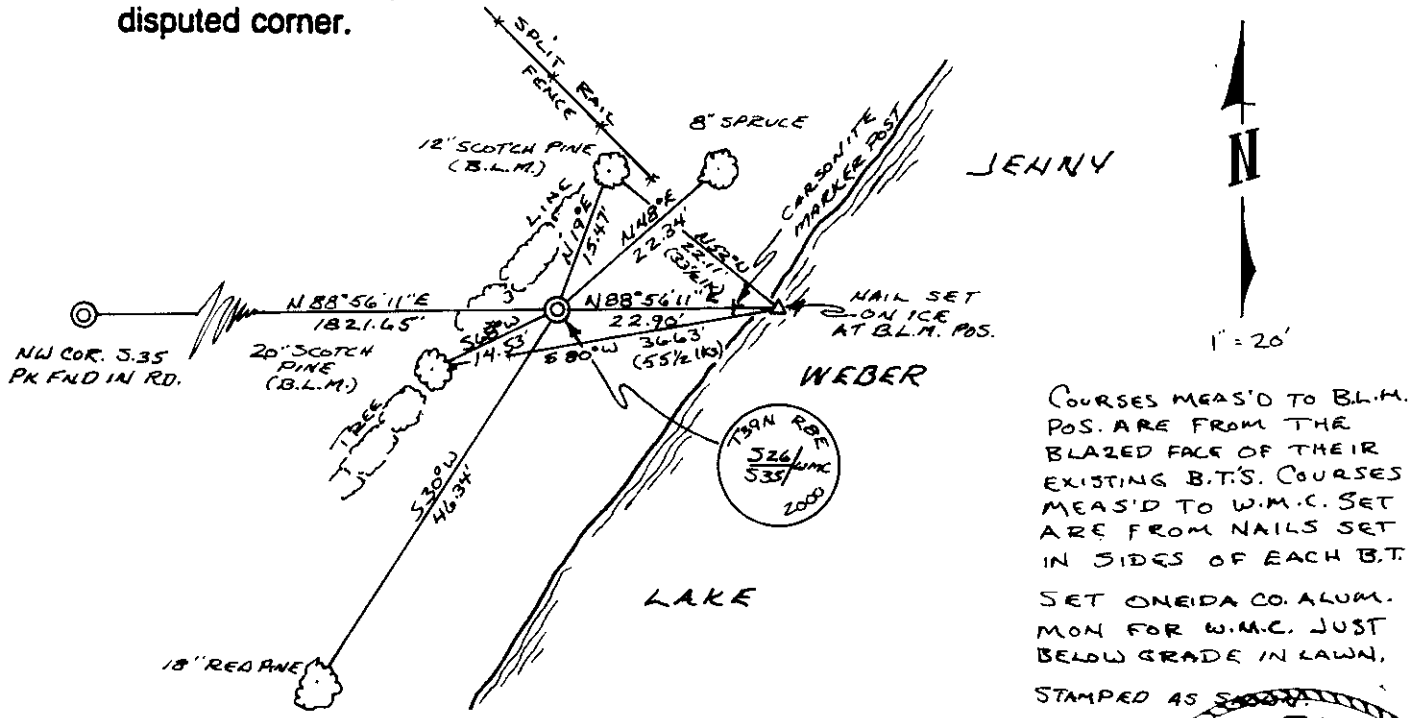
(b) (f) (g) (h) Description of monument found at this corner and if it was accepted, state all evidence (material, testimonial, occupational, plats, records, other monuments) used as a basis for accepting. If not accepted or if nothing was found, state evidence used as basis for establishing location. If reestablished through lost corner proportionate methods, indicate all monuments, distances and directions used to establish. Indicate type of monument found or set and sign post.

September, 1863 - Wm. E. Daugherty set meander post and made B.T.  
- Fir 10", N 55° W, 20 lks, Fir 12", S 73° W, 35 lks.

October, 1959 - (Per recorded survey and field notes.) Hugh B. Crawford (B.L.M.) in retracement of section 35, found a 1/2" iron pipe for the meander corner.. He set a 2.5" brass capped iron pipe and made the following b.t.'s - 12" Pine, S 79-3/4° W, 55-1/2 lks, 10" Pine, N 51-3/4° W, 33-1/2 lks, blazed and scribed. He measured 27.97 ch. (1846.02') West to the NW section corner.

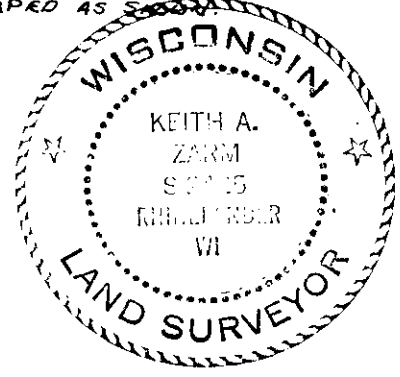
December, 2000 - I found Crawford's brass capped, scribed, iron pipe lying down on the lake bottom of Jenny Weber lake 1' from eroded bank. I also found his two live b.t.'s. I rest Crawford's corner with a nail on the ice by measuring his record ties from blazes on his b.t.'s and measured 1844.55' from the (over)

(c) (d) (e) Plan view of corner with ties to at least 4 witness monuments. If in disagreement with previously established corner, show the distances between the two corners and also indicate the ties to the disputed corner.



(i) I, Keith A. Zarm RLS = 2425  
(type or print name) certify that the corner location on this record was determined by me or under my direction and control and that this U.S. Public Land Survey Monument Record is correct and complete to the best of my knowledge and belief.

Keith A. Zarm Signature 24 AUG 01 Date



3809260027  
Stamp

Index No. V 18-19

Continued

NW Section Corner. I then set a Witness Meander Corner on the section line on solid ground and made two additional b.t.'s and set nails in sides of Crawford's b.t.'s—all witnessing the "new" w.m.c. as shown below.

REGISTER OF DEEDS OFFICE  
ONEIDA COUNTY, WIS.  
**FILED**  
SEP 10 2001  
At \_\_\_\_\_ o'clock \_\_\_\_\_ M  
THOMAS H. LEIGHTON  
REGISTER OF DEEDS