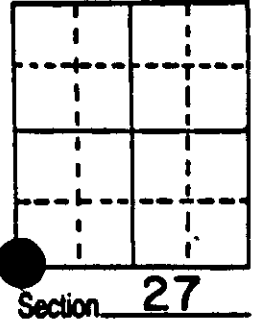


U.S. PUBLIC LAND SURVEY MONUMENT RECORD

Note: This form is intended and designed to fulfill all requirements of Wisconsin Administrative Code, Chapter A-E 5.02, U.S. Public Land Survey Monument Record (3) (a) (b) (c) (d) (e) (f) (g) (h) (i). An additional sheet may be added if necessary to conform with said requirements.

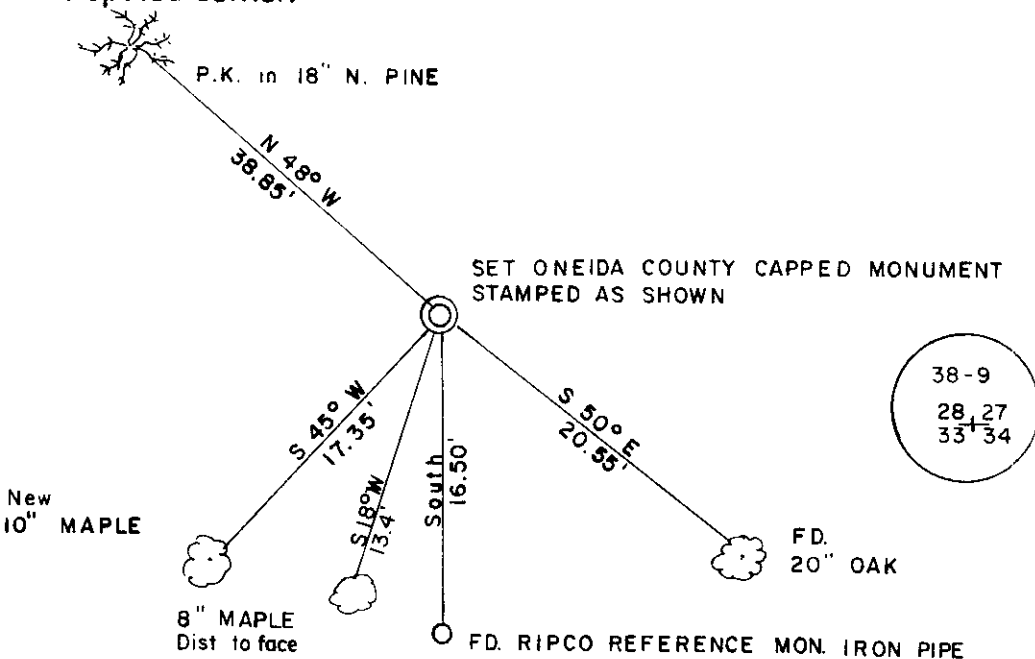
(a) Corner location: Township 38 North
 Range 9 East/~~West~~
 Town/~~City/Village~~ SUGAR CAMP
 County ONEIDA



(b) (f) (g) (h) Description of monument found at this corner and if it was accepted, state all evidence (material, testimonial, occupational, plats, records, other monuments) used as a basis for accepting. If not accepted or if nothing was found, state evidence used as basis for establishing location. If reestablished through lost corner proportionate methods, indicate all monuments, distances and directions used to establish.

- 1863 W.E. Daugherty established orig. cor. @ 80.00ch. Y Pine 10 N 30W 271, Birch 10 S1 3/4 E 105
- 1894 B.F. Dorr at corner to 27,28,33,34 B.T.s Y.Pine 6 S 26 W 25lks., Y Pine 7 N 24 1/2 W 13 lks.
- 1960 N. Loftus a surveyor for Ripco established the corner to 27,28,33,34 by retracing B.F. Dorrs work that he did in Sections 33 & 34. Set reference monument 16.5' south of corner.
- 1972 W. Cameron while surveying the plat of Doolittle-Bardens Shannee Estates found a 1/2" iron rod for the corner, witnesses, 15" Oak S 48 E 19.8', 8" maple S 18 W 13.4' & Ripco iron pipe witness north 16.5'
- At this corner I found Ripco's witness pipe and the two B.t.s of Cameron. He states Ripco's witness pipe is north 16.5' however the pipe is stamped north 25 lks. I established the corner 19.8' from the oak B.T. & north from the witness pipe 16.5' and this position checked closely with the calculated position as determined from iron pipes which Cameron set for the plat. I set an Oneida County capped monument and witnessed it as shown below.
- 1971 J. Fisher found iron rod in easement road Ripco I.P. South 16.5', Oak S48E 19.8'

(c) (d) (e) Plan view of corner with ties to at least 4 witness monuments. If in disagreement with previously established corner, show the distances between the two corners and also indicate the ties to the disputed corner.



- Magnetic Bearings Taken With Handheld Compass
- Distance to Alum.Nail in Side of tree
- No Scale

REGISTER OF DEEDS OFFICE
ONEIDA COUNTY, WIS.

FILED

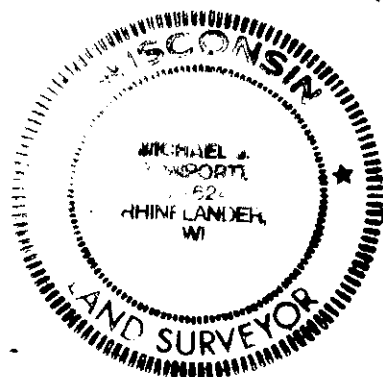
FEB 24 1986

At 8:40 O'Clock P.M.
LORIS VERAGE KUEHN
REGISTER OF DEEDS

(i) I, MICHAEL J. ROMPORTL R.L.S. 1624
 (type or print name) certify that the corner location on this record was determined by me or under my direction and control and that this U.S. Public Land Survey Monument Record is correct and complete to the best of my knowledge and belief.

Michael J. Romportl 6/23/86
 Signature Date

GENISOT & ASSOCIATES INC.
 1512 EAGLE ST., RHINELANDER, WIS.



Index No. V-13

3809280000