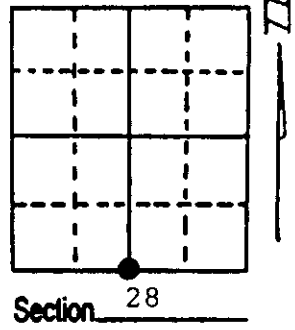


U.S. PUBLIC LAND SURVEY MONUMENT RECORD

Note: This form is intended and designed to fulfill all requirements of Wisconsin Administrative Code, Chapter A-E 7.08 U.S. Public Land Survey Monument Record (3) (a) (b) (c) (d) (e) (f) (g) (h) (i). An additional sheet may be added if necessary to conform with said requirements.

(a) Corner location: Township 38 North
 Range 9 East/West
 Town/City/Village Sugar Camp
 County Oneida

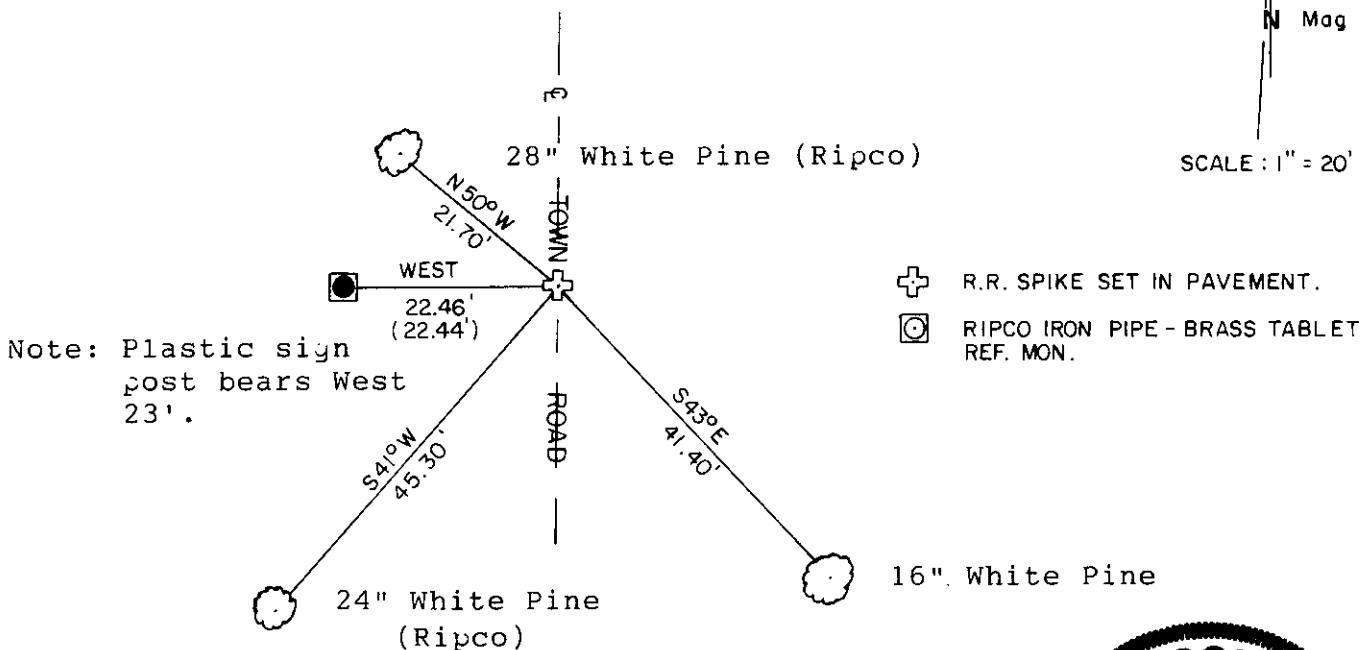


(b) (f) (g) (h) Description of monument found at this corner and if it was accepted, state all evidence (material, testimonial, occupational, plats, records, other monuments) used as a basis for accepting. If not accepted or if nothing was found, state evidence used as basis for establishing location. If reestablished through lost corner proportionate methods, indicate all monuments, distances and directions used to establish. Indicate type of monument found or set and sign post.

- 1863 - William Daugherty - 40.07 ch. set post.
 Original B.T.'s Aspen 6" S 55° E 281ks.
 Spruce 8" N 33° E 151ks.
- 1894 - Door - (Book 12 P.16, Book 22 P. 137). Notes to corner position in road during survey in area.
- 1955 - Loftus, Alexander & Metscher start at corner position and brush West to Sec. cor. RIPCO iron pipe - brass plate reference corner set 34 lks West of iron rod in road.
- 1996 - Russ Brown (Genisot) survey shows iron rod at this position.
- 1999 - Recovered iron rod in the pavement of Town Road. Ripco I.P. - brass plate reference monument and two bearing trees believed to be from old Ripco survey. (over)

(c) (d) (e) Plan view of corner with ties to at least 4 witness monuments. If in disagreement with previously established corner, show the distances between the two corners and also indicate the ties to the disputed corner.

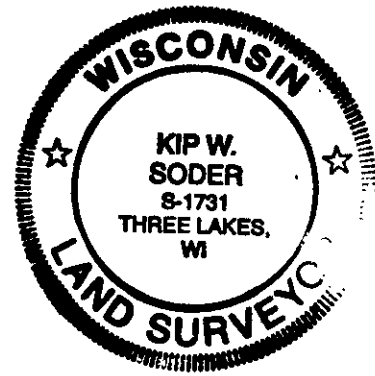
Note: All measurements taken to nail in side of tree.



Note: Plastic sign post bears West 23'.

(i) I, Kip W. Soder R.L.S. #1731
 (type or print name) certify that the corner location on this record was determined by me or under my direction and control and that this U.S. Public Land Survey Monument Record is correct and complete to the best of my knowledge and belief.

Kip W. Soder Signature Aug 31, 1999 Date



Stamp

Index No. V 11
3809 2800 20

Set railroad spike in pavement over iron rod. Remeasured to existing bearing trees and reference monument. Made new B.T. and set plastic sign post.

REGISTER OF DEEDS OFFICE
ONEIDA COUNTY, WIS.
FILED
SEP 2 1999
At _____ O'Clock _____ M
THOMAS H. LEIGHTON
REGISTER OF DEEDS

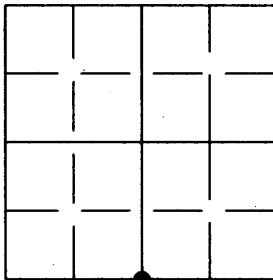
U.S. PUBLIC LAND SURVEY MONUMENT RECORD

Note: This form is intended and designed to fulfill all requirements of the Wisconsin Administrative Code, Chapter A-E 7.08 U.S. Public Land Monument Record (3)(a)(b)(c)(d)(e)(f)(g)(h)(i).
An additional sheet may be added if necessary to conform with said requirements.

(a) CORNER LOCATION: Oneida County Corner I.D. No.:

South 1/4 Corner, Sec. 28
Township 38 North
Range 9 East
Town of Sugar Camp
County of Oneida

3809280020



SECTION 28

REGISTER OF DEEDS OFFICE
ONEIDA COUNTY

FILED

FEB 28 2012

AT _____ O'CLOCK _____ M
THOMAS H. LEIGHTON
REGISTER OF DEEDS

(f)(g)(h) DESCRIPTION OF MONUMENT FOUND AT THIS CORNER AND IF IT WAS ACCEPTED, STATE ALL EVIDENCE (MATERIAL, TESTIMONIAL, OCCUPATIONS, PLATS, RECORDS, OTHER MONUMENTS) USED AS A BASIS FOR ESTABLISHING LOCATION. IF NOT ACCEPTED OF IF NOTHING WAS FOUND, STATE EVIDENCE USED AS BASIS FOR ESTABLISHING LOCATION. IF REESTABLISHED THROUGH LOST CORNER PROPORTIONATE METHODS, INDICATE ALL MONUMENTS, DISTANCES AND DIRECTIONS USED TO ESTABLISH. INDICATE TYPE OF MONUMENT AND SIGN POST FOUND OR SET.

See U.S. Public Land Survey Monument Record by Kip Sodor, R.L.S. No. S-1731, dated August 31, 1999 for previous information on this corner

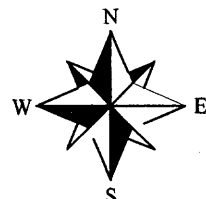
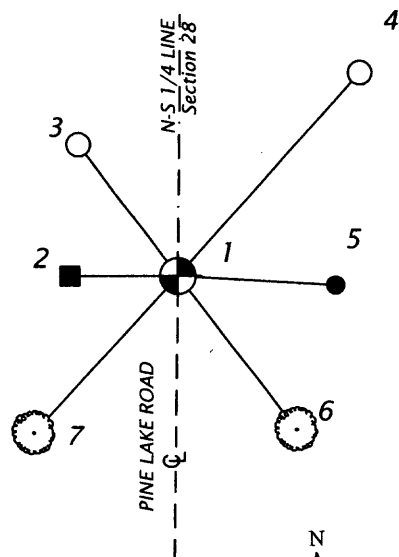
2/17/2012- Anthony R. Jones found railroad spike by Sodor. Bearing tree to northwest has been removed due to logging in the area. Oneida County Land Information Manager, Mike Romportl, requested a new tie in the northwest corner, in lieu of the bearing tree. I also added a new tie to the northeast corner and tied to an existing marker to the east of the corner, all as shown below.

(c)(d)(e) PLAN VIEW OF CORNER WITH TIES TO AT LEAST 4 WITNESS MONUMENTS. IF IN DISAGREEMENT WITH PREVIOUSLY ESTABLISHED CORNER, SHOW THE DISTANCE BETWEEN THE TWO CORNERS AND ALSO INDICATE THE TIES TO THE DISPUTED CORNER.

BEARINGS BASED ON THE MONUMENT RECORD
FOR THIS CORNER BY KIP SODOR, S-1731
DATED AUGUST 31, 1999 AND THE
BEARING FROM THE CORNER TO THE RIPCO
MONUMENT, RECORDED AS: "WEST"

- 1: FD RAILROAD SPIKE PER USPLSS
MONUMENT RECORD BY SODOR,
AUGUST 31, 1999
- 2: FD 2" PIPE W/BRASS PLATE (RIPCO)
WEST (N 90°00'00" W), 22.46'
- 3: SET 1" BY 18" IRON ROD
N 37°08'06" E, 34.31'
- 4: SET 1" BY 18" IRON ROD
N 41°54'236" E, 56.92'
- 5: FD 3/4" IRON ROD
S 86°38'55" E, 32.95'
- 6: BEARING TREE OF RECORD,
16" WHITE PINE,
S 37°57'38" E, 41.40'
- 7: BEARING TREE OF RECORD
24" WHITE PINE
S 42°41'15" W, 45.30'

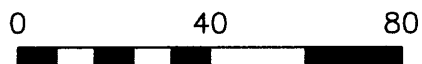
Found plastic post 1' west of RIPCO monument
Measurement to trees taken to spike in side of trees.
Bearing taken to center of trees.



(i) I, ANTHONY R. JONES, REGISTERED LAND SURVEYOR NO. S-2508
HEREBY CERTIFY THAT THE CORNER LOCATION ON THIS RECORD
WAS DETERMINED BY ME OR UNDER MY DIRECTION AND CONTROL
AND THAT THIS U.S. PUBLIC LAND SURVEY MONUMENT RECORD IS
CORRECT AND COMPLETE TO THE BEST OF MY KNOWLEDGE AND BELIEF.

[Handwritten Signature]
SIGNATURE

2/26/2012
DATE



3809280020

INDEX NO. V-11