

U.S. PUBLIC LAND SURVEY MONUMENT RECORD

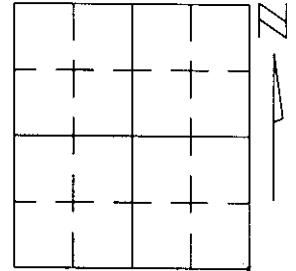
Note: This form is intended and designed to fulfill all requirements of Wisconsin Administrative Code, Chapter A-E 5.02, U.S. Public Land Survey Monument Record (3)(a)(b)(c)(d)(e)(f)(g)(h)(i). An additional sheet may be added if necessary to conform with said requirements.

(a) Corner location: Township 38 North

Range 9 East

Town/City/Village SUGAR CAMP

County ONIEDA



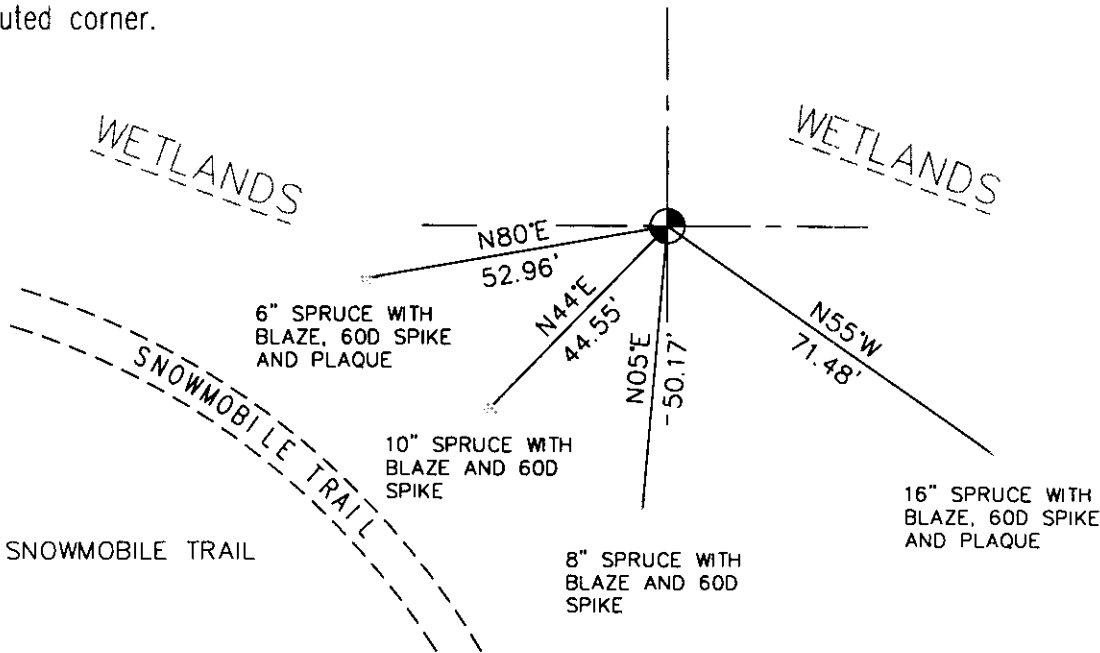
Section 29

(b)(f)(g)(h) Description of monument found at this corner and if it was accepted, state all evidence (material, testimonial, occupational, plats, records, other monuments) used as a basis for accepting. If not accepted or if nothing was found, state evidence used as basis for establishing location. If reestablished through lost corner proportionate methods, indicate all monuments, distances and directions used to establish.

ORIGINAL P.L.S. SURVEY: WOOD POST SET WITH 8" TAMARACK N77°W, 42 LKS. AND 8" TAMARACK S33°W, 49 LKS. AS BEARING TREES. NO EVIDENCE OF ORIGINAL MONUMENTATION WAS FOUND.

I FOUND A 2" IRON PIPE WITH A SQUARE PLATE WELDED TO THE TOP SET BY RIPCO AS PER NOTES ON FILE AT THE ONIEDA COUNTY SURVEYOR'S OFFICE. THE PIPE WAS TIPPED OVER. THIS CORNER FALLS IN A WETLANDS AREA AND NO EVIDENCE OF OCCUPATION EXISTS IN THE IMMEDIATE AREA. HOWEVER THE SECTION LINE TO THE WEST OF THIS CORNER IS WELL ESTABLISHED BY OCCUPATION, USE AND MONUMENTATION. I ACCEPTED THIS IRON PIPE AS THE BEST AVAILABLE EVIDENCE OF THE ORIGINAL LOCATION OF THE CORNER. I SET AN ONIEDA COUNTY MONUMENT AT THE POINT WHERE THE PIPE APPEARED TO HAVE ENTERED THE GROUND.

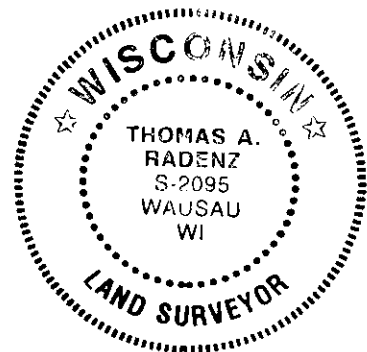
(c)(d)(e) Plan view of corner with ties to at least 4 witness monuments. If in disagreement with previously established corner, show the distances between the two corners and also indicate the ties to the disputed corner.



⊕ - SET ONIEDA COUNTY MONUMENT

(i) I, Thomas A. Radenz, Wisconsin Registered Land Surveyor, certify that the corner location on this record was determined by me or under my direction and control and that this U.S. Public Land Survey Monument Record is correct and complete to the best of my knowledge and belief.

Signature Thomas A. Radenz Date 2/18/99



Index No. V 9
3809290000