

U.S. PUBLIC LAND SURVEY MONUMENT RECORD

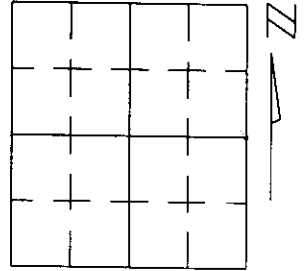
Note: This form is intended and designed to fulfill all requirements of Wisconsin Administrative Code, Chapter A-E 5.02, U.S. Public Land Survey Monument Record (3)(a)(b)(c)(d)(e)(f)(g)(h)(i). An additional sheet may be added if necessary to conform with said requirements.

(a) Corner location: Township 38 North

Range 9 East

Town/City/Village SUGAR CAMP

County ONIEDA

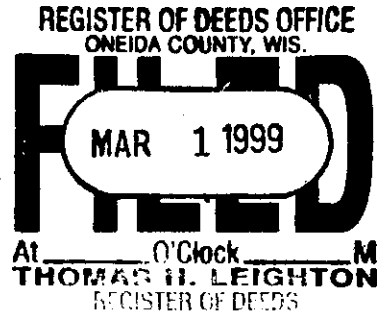


Section 29

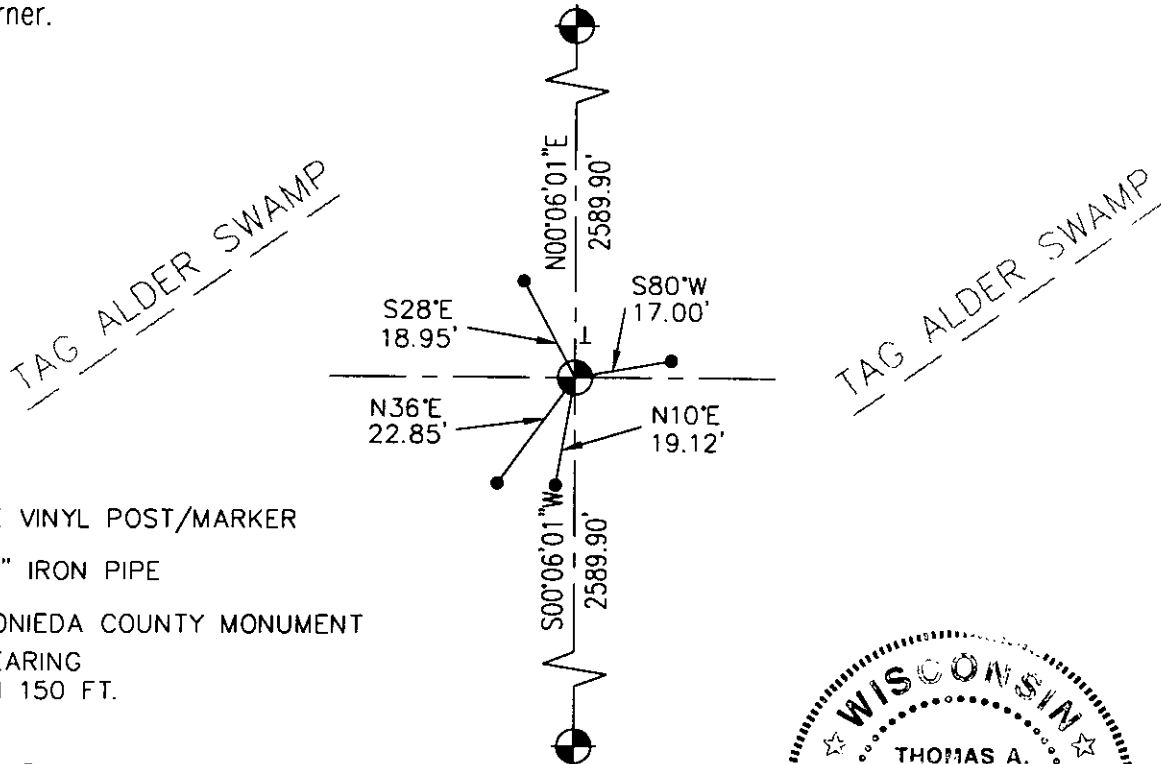
(b)(f)(g)(h) Description of monument found at this corner and if it was accepted, state all evidence (material, testimonial, occupational, plats, records, other monuments) used as a basis for accepting. If not accepted or if nothing was found, state evidence used as basis for establishing location. If reestablished through lost corner proportionate methods, indicate all monuments, distances and directions used to establish.

ORIGINAL P.L.S. SURVEY: WOOD POST SET WITH 6" TAMARACK S80°E 256 LKS. FOR BEARING TREE. NO EVIDENCE OF ORIGINAL MONUMENTATION FOUND.

THE CORNER FALLS IN A LARGE WETLANDS AREA AND NO MONUMENTATION OR EVIDENCE OF OCCUPATION WAS FOUND. SINGLE PROPORTIONATE MEASURE WAS USED TO ESTABLISH THE CORNER.

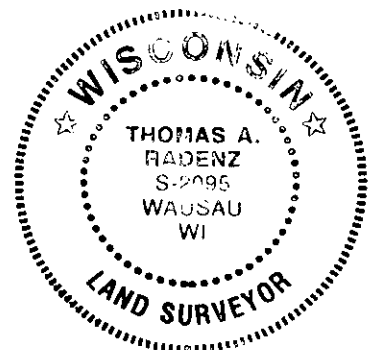


(c)(d)(e) Plan view of corner with ties to at least 4 witness monuments. If in disagreement with previously established corner, show the distances between the two corners and also indicate the ties to the disputed corner.



- T - WHITE VINYL POST/MARKER
 - - SET 1" IRON PIPE
 - ⊙ - SET ONIEDA COUNTY MONUMENT
- NOTE: NO BEARING TREES WITHIN 150 FT.

(i) I, Thomas A. Radenz, Wisconsin Registered Land Surveyor, certify that the corner location on this record was determined by me or under my direction and control and that this U.S. Public Land Survey Monument Record is correct and complete to the best of my knowledge and belief.



Thomas A. Radenz 2/18/99
Signature Date

Index No. T 9
3809292000