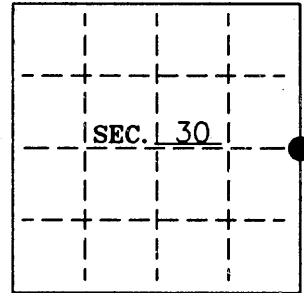


**U. S. PUBLIC LAND SURVEY MONUMENT RECORD**

Note: This form is intended and designed to fulfill all requirements of Wisconsin Administrative Code-Chapter A-E 7.08 U. S. Public Land Survey Monument Record (3)(a)(b)(c)(d)(e)(f)(g)(h)(i). An additional sheet may be added if necessary to conform with said requirements.

(a) CORNER LOCATION: Oneida County Coordinates  
E 1/4 corner of Sec. 30 N 206978.6783  
 Township 38 North E 266828.9905  
 Range 9 East Datum Base 83/91 Oneida Co. Coord's.  
 Town Sugar Camp County of Oneida



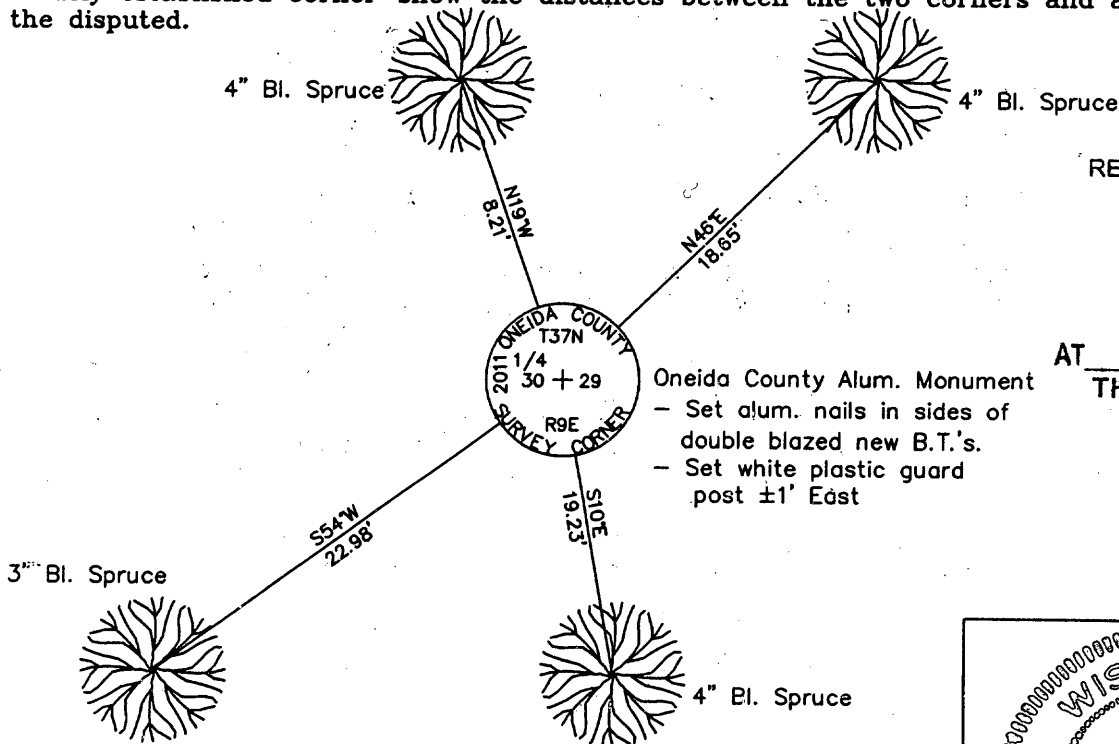
(b) HISTORY OF ORIGINAL CORNER ESTABLISHMENT:  
 Original Surveyor: Wm. E. Daugherty  
 Date of Survey: Commenced Sept. 14, 1863  
 Completed Sept. 21, 1863

Original B.T.'S  
 6" Tamarack, S33°W, 198 lks  
 6" Tamarack, N77°E, 156 lks

(b)(f)(g)(h) Description of monument found at this corner and if it was accepted-state all evidence (material-testimonial-occupation-plats-records-other monuments) used as a basis for accepting. If not accepted or if nothing was found state evidence used as basis for establishing location. If reestablished through lost corner proportionate methods indicate all monuments-distances and directions used to establish. Indicate type of monument and sign post found or set.

- 1863 - Wm. E. Daugherty, Deputy Surveyor, sets 1/4 Section Post.
- 1956 - E.F. Kowalke shows a single-proportioned corner 1.42 chs. west of a temp. cor. at the 1/4 corner location, while surveying the East Line of Sec. 30 - see Oneida County Surveyor's Map #B6155.
- 1976 - Sy Poskie shows a "Cedar Post E.F.K." mid-way on the sec. line on a survey of Sec. 30 (O.C.S.M. #C617).
- 2008 - Thomas A. Radenz, on a survey of Sec. 29, shows a computed location for the W1/4 Corner from Sy Poskie survey, 1976. This location is not at the proportioned loc. (O.C.S.M. #C2569).
- 2011 - Stuart L. Foltz found a 6"-dia. Cedar Post set by Kowalke in 1956. This corner fits his proportioned location. Based on Oneida County coordinates, this corner misses the computed location by Thomas Radenz by ±15 feet. We replaced Kowalke's Cedar Post with a 2-1/2" Oneida County aluminum monument and witnessed it as shown below.

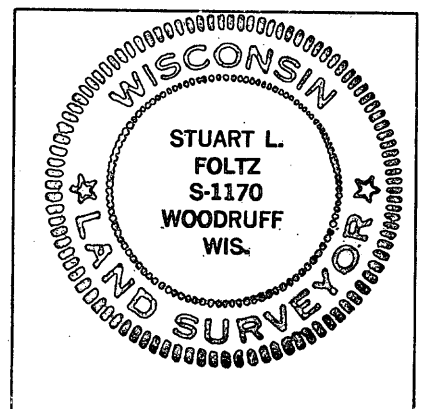
(c)(d)(e) Plan view of corner with ties to at least 4 witness monuments. If in disagreement with previously established corner-show the distances between the two corners and also indicate the ties to the disputed.



REGISTER OF DEEDS OFFICE  
 ONEIDA COUNTY  
**FILED**  
 FEB 13 2012

AT \_\_\_\_\_ O'CLOCK \_\_\_\_\_ M  
**THOMAS H. LEIGHTON**  
 REGISTER OF DEEDS

Oneida County Alum. Monument  
 - Set alum. nails in sides of double blazed new B.T.'s.  
 - Set white plastic guard post ±1' East



INDEX NO. T-5

(i) I Stuart L. Foltz S-1170  
 hereby certify that the corner location on this record was determined by me or under my direction and control and that this U.S. Public Land Survey Monument Record is correct and complete to the best of my knowledge and belief.

Stuart L. Foltz 1/25/2012  
 Signature Foltz and Associates, Inc. Date

3809302000