

This form is intended to fulfill the requirements of Chapter A-E 7.08 (3)(a) thru (i) U.S. Public Land Survey Monument Location Record, Wisconsin Administrative Code. Use the reverse side of form for continuation.

U.S. PUBLIC LAND SURVEY MONUMENT LOCATION RECORD

Recorders Data

USPLS CORNER: EAST WITNESS MC SECTION: 6 TOWNSHIP: 37 NORTH RANGE: 09 EAST
 NAME OF WATERWAY FOR M.C. CORNER: SILVER LAKE SECTION LINE: NORTH
 (CITY)(VILLAGE)(TOWN) OF: PINE LAKE COUNTY OF: ONEIDA

Description of monument found or placed and all other evidence used as the basis for monument location; including monuments and related measurements required if the corner location was reestablished by lost corner proportionate methods. Also indicate name of original surveyor, original survey date and the corner monument, bearing trees, witness or other reference monuments established; including measured bearing and distance ties, from available records.

Could not find record iron pipe at corner per 1960 survey by Sy M. Poskie noted below, as lake bank scalping evidenced down to lakeshore for boat launching; however, I did find both of his Pr BTs and reset the corner with a standard 2" dia. by 30" long aluminum pipe monument with split bottom end and stamped Oneida County cap flush to existing grade on lake bank, by using record tie distances from revealed blaze face of each BT. Corner falls about 8 feet East of the lake shoreline existing this date.

In July 1859, Hiram C. Fellows/GLO set a wood post as the original corner and noted new OBTs: A 15" Pr N31°E 15 links and an 8" Bw S16°E 22? links; all of which are now obliterated, so I can only accept this corner location as a witness MC noted by Poskie on the north line of Section 6 per following record notes.

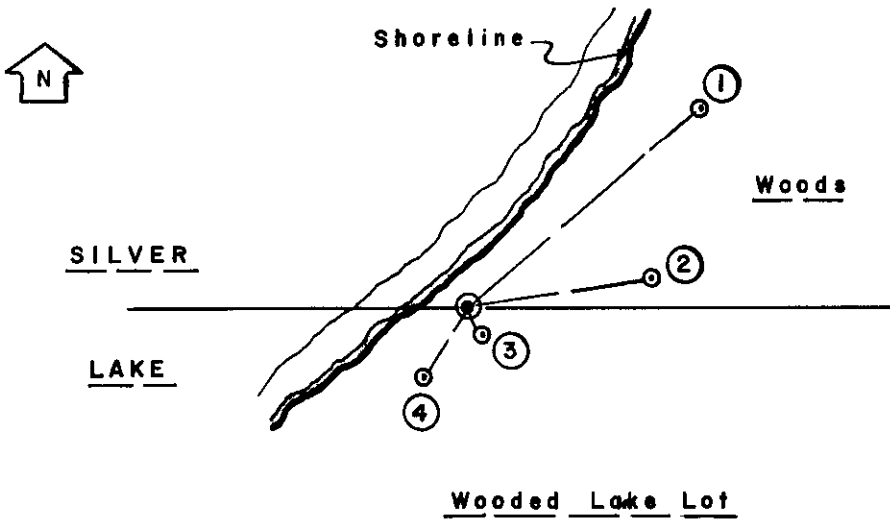
In May 1960, Sy M. Poski/RLS 140, notes an iron pipe at this corner and BTs: A 12" Pr S29°W 12.8' and a 11" Pr N77°E 29.1' per Plat of Survey B-1914 in Oneida County survey records.

Standard white poly corner marker 'T' post set along SE side of the new corner monument to protect it from further lake bank scalping or erosion.

This recovery completed September 5, 2001; there were no direct witnesses.

Corner is accessible on frontage of improved lake lot at Fire No. 5495 Silver Lake Road.

Plan view map of monument location with bearing and distance ties to a minimum of four(4) described witness or reference monuments of concrete, natural stone, iron, live bearing trees or equivalent material. If applicable, also show a minimum of two(2) bearing and distance ties to any other monument found and not accepted; including the bearing and distance from the accepted monument.



WITNESS MONUMENT TIES:

- ① New BT 8" Pr with No Trespass sign on upper face N51°E 47.90'.
- ② Old BT 14" Pr with lower blaze fissure plain N80°E 29.38'.
- ③ New BT 9" Pr S32°E 4.87'.
- ④ Old BT 14" Pr with lower face blaze open and scribed 'BT' S33°W 12.99'.

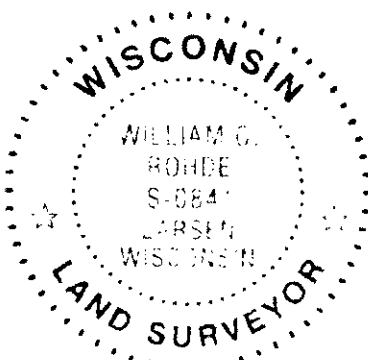
No other BTs or corner evidence observed nearby.

Prior to setting new monument at the record tie distances location a softer 3" dia. or so stained soil deposit was revealed by probing with chaining pin.

SCALE: 1" = 30'

Unless otherwise indicated, all bearing tree ties are to a .25" dia. by 2.5" long PK nail with a 1.25" dia. steel washer driven into unblazed right face and a .25" dia. by 2.5" long PK nail with a 2" dia. steel washer stamped BT is also driven into unblazed face of bearing tree at DBH; the basis for measured bearings is by compass to nearest degree and all tie distances are measured horizontal by steel tape corrected to nearest 1/100th feet at standard temperature of 68° F.

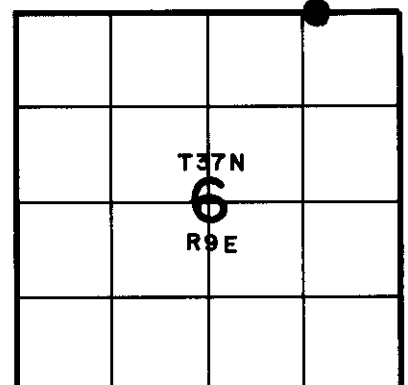
RLS SEAL:



LAND SURVEYOR CERTIFICATE:

I, William C. Rohde, hereby certify that I am duly licensed as a Professional Land Surveyor in the State of Wisconsin; that this USPLS monument location was determined by me and/or under my direct supervision and control; and that this U.S. Public Land Survey Monument Location Record is true and correct to the best of my knowledge and belief.

Signed *William C. Rohde*
 William C. Rohde RLS 841



SECTION LOCATION MAP

INDEX NO. A-15

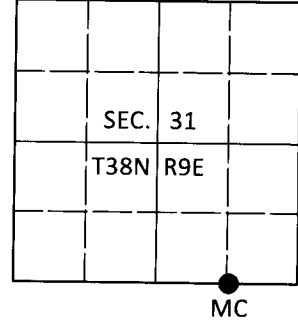
32 09 21 0009

U.S. PUBLIC LAND SURVEY MONUMENT RECORD

Note: This form is intended and designed to fulfill all requirements of Wisconsin Administrative Code, Chapter A-E 7.08 U.S. Public Land Survey Monument Record (3)(a-i).

(a) CORNER LOCATION
 Meander Cor. of Secs. 6 & 31
 Township 37 & 38 North
 Range 9 East of the 4th P.M.
 Town of Pine Lake & Sugar Camp
 County of Oneida

WISCORS - Oneida County
 N: 199,031.64 USft
 E: 264,661.07 USft
 Datum: NAD 83(2011)
 GNSS Method: RTN - Offset
 GNSS Control: WISCORS VRS



(b) HISTORY OF ORIGINAL CORNER ESTABLISHMENT

Original Surveyor: _____ Original Accessories: _____
 Date of Survey Commenced: _____ See previous monument record(s)
 Completed: _____

(b)(f)(g)(h) Description of monument found at this corner and if it was accepted, state all evidence (material, testimonial, occupational, plats, records, other monuments) used as a basis for accepting. If not accepted or if nothing was found, state evidence used as basis for establishing location. If re-established through lost corner proportionate methods, indicate all monuments, distances and directions used to establish. Indicate type of monument and sign post found or set.

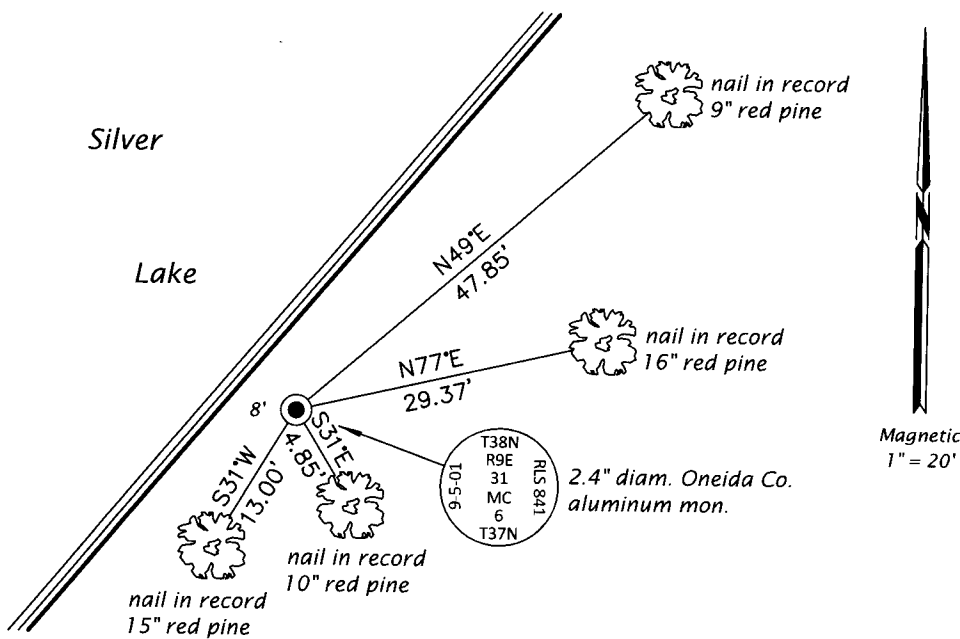
This is a perpetuation of the following monument record(s) that comprise a complete history of the corner:

Mar. 25, 2002: USPLS Monument Record No. 3809310009 by William C. Rohde, PLS

July 24, 2019: I found and accepted the record monument, a 2.4" diam. aluminum pipe with a 3.3" diam. Oneida Co. aluminum cap flush with the ground surface. I found or established accessories as shown below. I found a white vinyl sign post adjacent to the monument.

The coordinate value shown has been verified by at least one of the following methods: 1) comparison to a previously GPS determined published value; 2) the value is the average of two or more GPS observations at a markedly different time; 3) one or more distances were measured back to the GPS observed corner from temporary GPS observed offset locations.

(c)(d)(e) Plan view of corner with ties to at least 4 witness monuments. If in disagreement with previously established corner, show the distances between the two corners and also indicate the ties to the disputed.



REGISTER OF DEEDS OFFICE
 ONEIDA COUNTY
 FILED

JAN 03 2020

KYLE J. FRANSON
 REGISTER OF DEEDS

(i) I, Jeffrey W. Austin, Professional Land Surveyor No. S-1885, hereby certify that the corner location on this record was determined by me or under my direction and control and that this U.S. Public Land Survey Monument Record is correct and complete to the best of my knowledge and belief.

[Handwritten Signature]
 Signature

DEC 23, 2019
 Date