

U.S. PUBLIC LAND SURVEY MONUMENT RECORD

Note: This form is intended and designed to fulfill all requirements of Wisconsin Administrative Code, Chapter A-E 5.02, U.S. Public Land Survey Monument Record (3)(a)(b)(c)(d)(e)(f)(g)(h)(i). An additional sheet may be added if necessary to conform with said requirements.

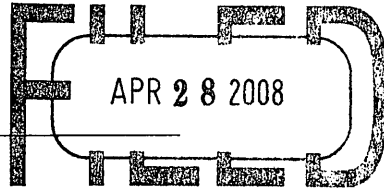
(a) Corner location: Township 38 North

Range 9 East

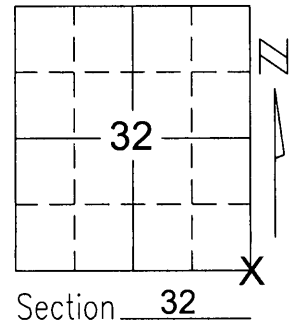
Town/City/Village SUGAR CAMP

County ONEIDA

REGISTER OF DEEDS OFFICE
ONEIDA COUNTY, WIS.



At 12 O'Clock 12 M
THOMAS H. LEIGHTON
REGISTER OF DEEDS



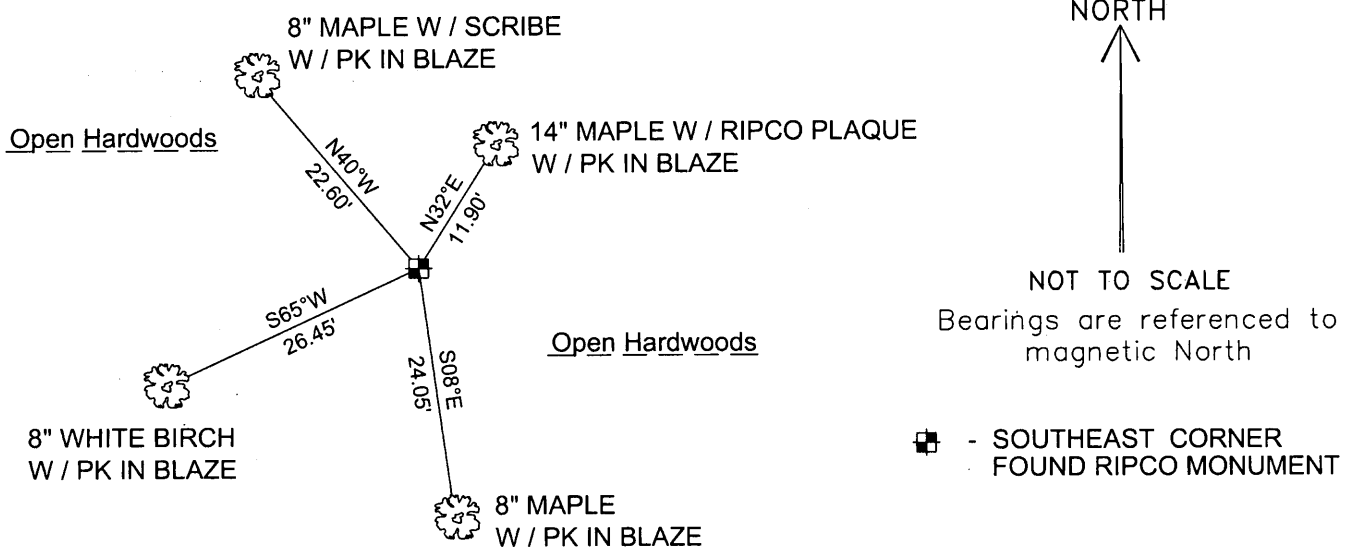
(b)(f)(g)(h) Description of monument found at this corner and if it was accepted, state all evidence (material, testimonial, occupational, plats, records, other monuments) used as a basis for accepting. If not accepted or if nothing was found, state evidence used as basis for establishing location. If reestablished through lost corner proportionate methods, indicate all monuments, distances and directions used to establish.

- 1863-William Daugherty(Deputy Surveyor)-80.0 ch. set corner post
 - Original B.T.'s White Pine 12" N48°W, 13 links.
 - Birch 14" N57°E, 15 links.
 - White Pine 12" S31°E, 15 links
 - White Pine 10" S24°W, 19 links

1955-Loftus, Alexander & Metscher(RIPCO)-86.41 1/2 ch. set corner (No B.T.'s mentioned in Ripco notes)

2008-I, found a 2" iron pipe with a square plate welded on the top, inscribed with Sec. 32 SE corner set by Ripco surveyor's, as per notes on file at the Oneida County Surveyor's office. The corner falls in open hardwoods. There was no immediate evidence of original corner. Found bearing tree to the Northwest inscribed in blaze with SE 32. Found tree to the Northeast with Ripco plaque. I accepted this iron pipe as the best available evidence of the original location and common use of the corner. Set ties to the corner to perpetuate the corner location.

(c)(d)(e) Plan view of corner with ties to at least 4 witness monuments. If in disagreement with previously established corner, show the distances between the two corners and also indicate the ties to the disputed corner.



(i) I, Joshua W. Prentice, RLS S-2852, certify that the corner location on this record was determined by me or under my direction and control and that this U.S. Public Land Survey Monument Record is correct and complete to the best of my knowledge and belief.

Joshua W. Prentice
Signature

APRIL 24, 2008
Date



Index No. **2-9**