

U.S. PUBLIC LAND SURVEY MONUMENT RECORD

Note: This form is intended and designed to fulfill all requirements of Wisconsin Administrative Code, Chapter A-E 5.02, U.S. Public Land Survey Monument Record (3)(a)(b)(c)(d)(e)(f)(g)(h)(i). An additional sheet may be added if necessary to conform with said requirements.

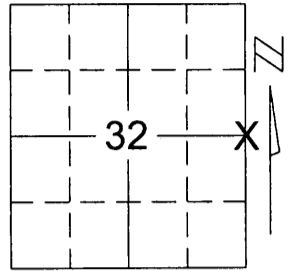
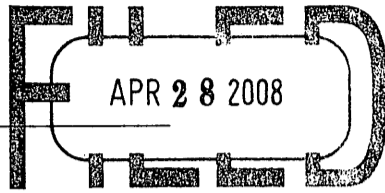
(a) Corner location: Township 38 North

Range 9 East

Town/City/Village SUGAR CAMP

County ONEIDA

REGISTER OF DEEDS OFFICE
ONEIDA COUNTY, WIS.



At 12 O'Clock M
THOMAS H. LEIGHTON
REGISTER OF DEEDS

Section 32

(b)(f)(g)(h) Description of monument found at this corner and if it was accepted, state all evidence (material, testimonial, occupational, plats, records, other monuments) used as a basis for accepting. If not accepted or if nothing was found, state evidence used as basis for establishing location. If reestablished through lost corner proportionate methods, indicate all monuments, distances and directions used to establish.

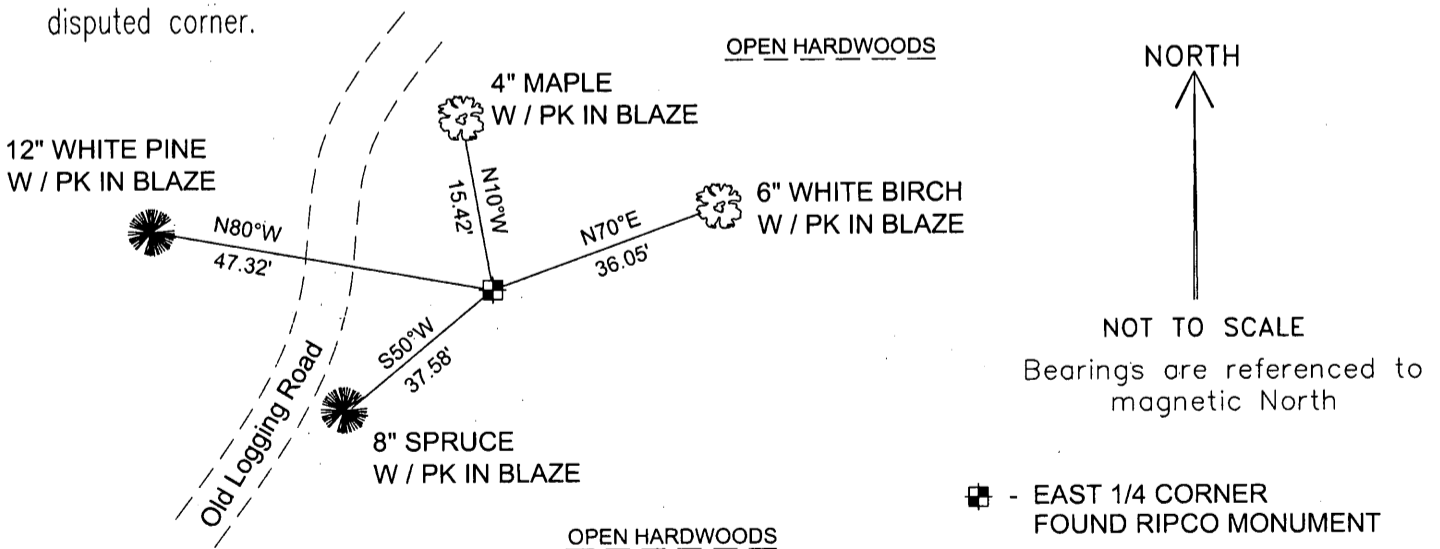
1863-William Daugherty(Deputy Surveyor)-40.0 ch. set corner post
Original B.T.'s Birch 8" S17°W 24 links.
Hemlock 12" N56°E 13 links.

1955-Loftus, Alexander & Metscher(RIPCO)-43.13 1/2 ch. set corner(No record as to why corner is not centered on section line or how correction was established in field notes)

B.T.'s Sb 6" N89°W 106 ft
Aq 6" N87°E 38 ft.

2008-I, found a 2" iron pipe with a square plate welded on the top, inscribed with Sec. 32 E 1/4, set by Ripco surveyor's, as per notes on file at the Oneida County Surveyor's office. The corner falls in open hardwoods just east of an old logging road. There was no immediate evidence of original corner or Ripco bearing trees. I accepted this iron pipe as the best available evidence of the original location and common use of the corner. Set ties to the corner to perpetuate the corner location.

(c)(d)(e) Plan view of corner with ties to at least 4 witness monuments. If in disagreement with previously established corner, show the distances between the two corners and also indicate the ties to the disputed corner.



(i) I, Joshua W. Prentice, RLS S-2852, certify that the corner location on this record was determined by me or under my direction and control and that this U.S. Public Land Survey Monument Record is correct and complete to the best of my knowledge and belief.

Signature

Date

APRIL 24, 2008



Index No. X-9