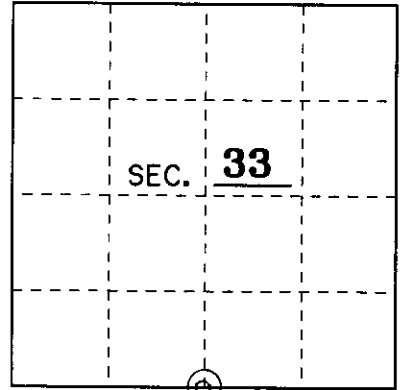


U.S. PUBLIC LAND SURVEY MONUMENT RECORD

Note: This form is intended and designed to fulfill all requirements of Wisconsin Administrative Code, Chapter A-E 7.08 U.S. Public Land Monument Record (3)(a)(b)(c)(d)(e)(f)(g)(h)(i). An additional sheet may be added if necessary to conform with said requirements.

(a) CORNER LOCATION: SOUTH 1/4 County or State Plane Coordinates
 _____ Corner of Section 33 Northing _____
 Township 38 North Easting _____
 Range 9 East Datum Base _____
 Township/City Sugar Camp County of ONEIDA



(b) HISTORY OF ORIGINAL CORNER ESTABLISHMENT Original B.T.'s
 Original Surveyor: H.C. FELLOWS 7" TAM. N 63° E 87 LKS.
 Date of Survey: JULY 1859 6" TAM. S 70° E 80 LKS.

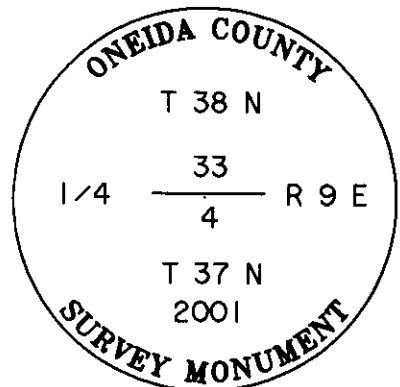
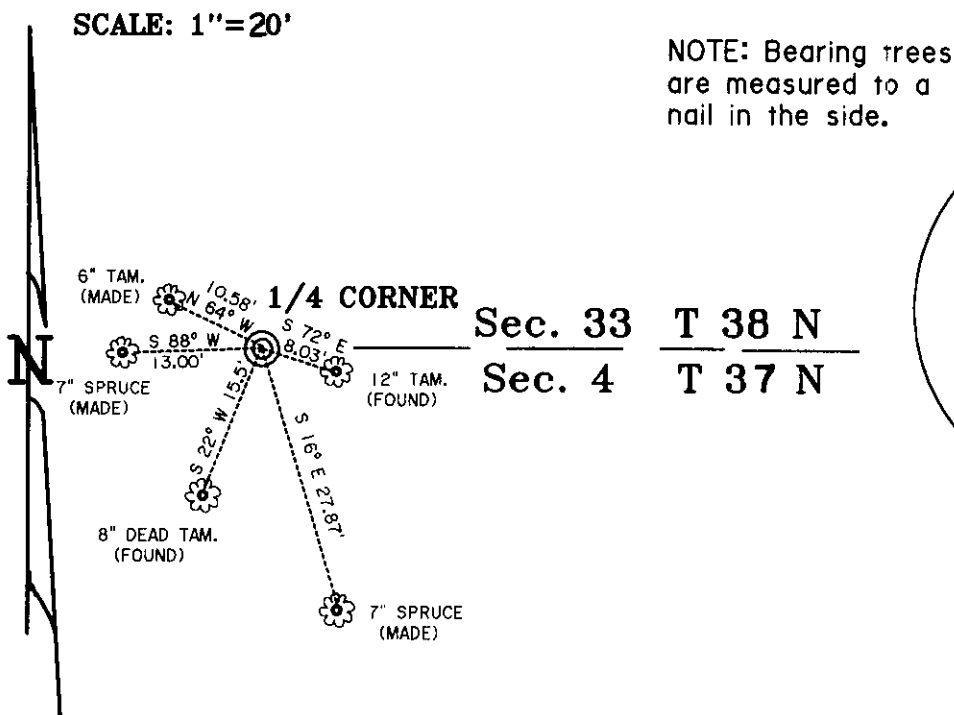
(b)(f)(g)(h) Description of monument found at this corner and if it was accepted, state all evidence (material, testimonial, occupational, plats, records, other monuments) used as a basis for accepting. If not accepted or if nothing was found, state evidence used as basis for establishing location. If reestablished through lost corner proportionate methods, indicate all monuments, distances and directions used to establish. Indicate type of monument and sign post found or set.

4-07-81 JAMES KASSON FOUND A 1-1/4" IRON PIPE AND LISTED TWO BEARING TREES: 8" TAM. S 22° W 15.4 FEET AND AN 8" TAM. S 72° E 7.90 FEET.

11/13/1979 JAMES REIN FOUND A 1-1/4" IRON PIPE WITH COUPLING AND LISTED TWO BEARING TREES: AN 8" TAM. S 22° W 15.40 FEET AND AN 8" TAM. S 72° E 7.90 FEET.

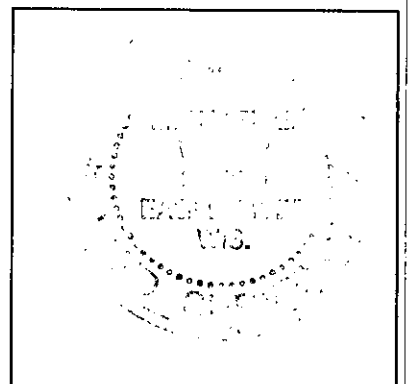
11/29/2001 I, MICHAEL E. WEBER, FOUND A 1-1/4" IRON PIPE AND REPLACED IT WITH AN ONEIDA COUNTY ALUMINUM MONUMENT AND STAMPED AS SHOWN BELOW. I FOUND BOTH OF REIN'S TAM.'S AND MADE 3 NEW BEARING TREES AND SET A PLASTIC SIGN POST 0.7 FEET NORTHWEST OF THE CORNER.

(c)(d)(e) Plan view of the corner with ties to at least 4 witness monuments. If in disagreement with previously established corner, show the distances between the two corners and also indicate the ties to the disputed.



(i) I, Michael E. Weber R.L.S. No. 2070
 hereby certify that the corner location on this record was determined by me or under my direction and control and that this U.S. Public Land Survey Monument Record is correct and complete to the best of my knowledge and belief.

Signature Michael E. Weber Date 12-06-2001



Index No. Z-11

380933 0020