

CERTIFIED LAND CORNER RESTORATION

Index No. W-13

State of Wisconsin

County of Oneida } ss.

I Phillip T. Hansen, do hereby certify that on the 12th day of August, 1977, I found evidence of the N 1/16 corner of Section 33 & 34

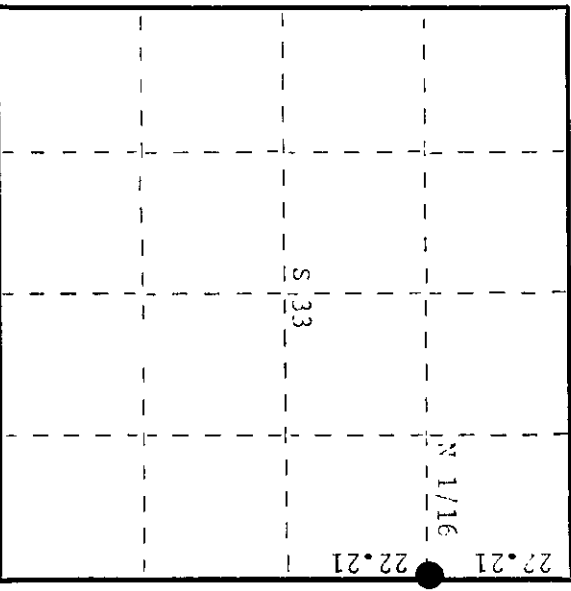
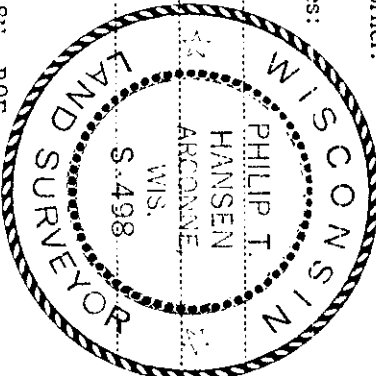
Township 38, North, Range 9 East, Fourth Principal Meridian,

as described hereon; and that from this evidence I established a new monument and accessories as described hereon to perpetuate the original location of this corner.

Resident witnesses:

Jim Claffin

Herb Wagner



History of original corner establishment:  
Original Corner established by B.F. Derr, County Surveyor.

Corner recovered by N. Loftus, Ripco Surveyor, in 1960. Recovered Dorr's post and B.F. Set new iron pipe and marked NBTs - Cedar 5" N38°W, 43-3/4 links. Cedar 5" S34°W, 26.0 links.

Description of corner evidence found:

Recovered 1" iron pipe with 2" square brass cap, stamped:  
Monument projects 12" above ground. Pipe recovered in excellent condition.  
Recovered an old wood post which bears N74°W, 2.0 links from Ripco's monument. Also an iron pipe 2" diameter bears S58°W, 3.75 links.  
Recovered (BTS - Cedar 3" N38°W, 43.75 links (44.5 links), scribed S33-38-9.  
Cedar 5" S34°W, 26.0 links (S40°W) scribed 1/16 BT. N 1/16  
S33  
S34  
RIPCO

Description of monument and accessories I established to perpetuate the original location of this corner.  
No additional accessories established.

Dated at Rhineland, Wis., this 26th day of August, 1977

Signature Phillip T. Hansen Title Registered Land Surveyor Registration No. S-498  
(County Surveyor, Registered Land Surveyor, or other duly authorized official)

Office of Register of Deeds, County of Oneida  
Instrument was filed in this office for record on the 13th day of September, 1977  
at 4:00 o'clock PM. I hereby certify that the within

Terrie Teresa Kuebler  
(Register of Deeds)

By Terrie Teresa Kuebler Deputy