

CERTIFIED LAND CORNER RESTORATION

Index No. A-15

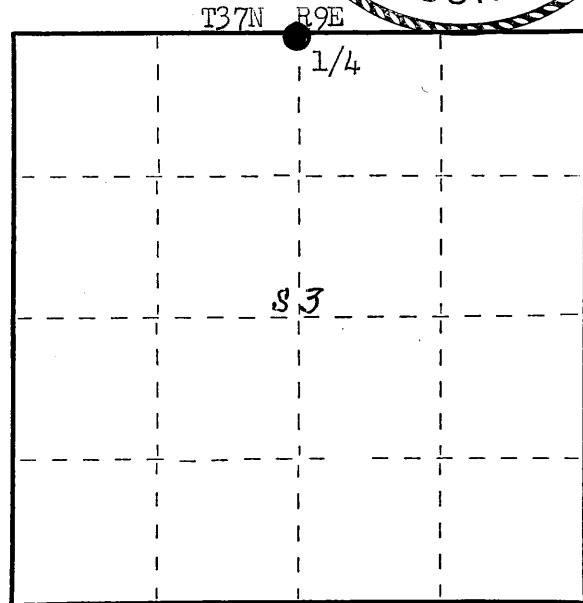
State of Wisconsin }  
County of Oneida } ss.

I Philip T. Hansen, do hereby certify that on the 23rd day of September, 1976, I found evidence of the Quarter corner of Section 34 and 3 Township 37-38, North, Range 9 East, Fourth Principal Meridian, as described hereon; and that from this evidence I established a new monument and accessories as described hereon to perpetuate the original location of this corner.

Resident witnesses:

Jim Claflin

Herb Wagoner



○ = Corner monument restored.

History of original corner establishment:

Original Corner established by H.C. Fellows, Deputy Surveyor, in 1860.

Corner recovered by D.H. Vaughan, County Surveyor, in 1893. Set post and marked NBTs - Tamarack 6" S 88 1/4 E 61 links, Tamarack 10" N 41 1/4 W 57 1/4 links.

Corner recovered by N. Loftus, Ripco Surveyor, in 1958. Set new post and marked NBTs - Tamarack 6" S 76° E 22 links, Tamarack 4" N 17° E 7-3/4 links.

Description of corner evidence found:

Recovered 2 1/2" iron pipe with 4" square brass cap, in good condition, monument was found firmly in ground. Cap stamped:

Recovered OBTs - Tamarack 4" (5") N 17° E (N 12° E) 7.75 links, scribed 1/4 S34 BT.  
Tamarack 6" (7") S 76° E 22.0 links, scribing not legible.

T38N R9E  
S | 34  
S | 3  
T37N R9E  
RIPCO

Description of monument and accessories I established to perpetuate the original location of this corner.

As monument was recovered in good condition and firmly in ground, it was left in place. Monument projects 24" above ground. No additional accessories established.

Dated at Rhineland, Wis., this 4th day of November, 1976

Signature Philip T. Hansen Title Registered Land Surveyor Registration No. S-498  
(County Surveyor, Registered Land Surveyor, or other duly authorized official)

Office of Register of Deeds, County of Oneida, I hereby certify that the within instrument was filed in this office for record on the 2nd day of December, 1976 at 9:30 o'clock a M.

Loris Verage Kuehn  
(Register of Deeds)

By \_\_\_\_\_ Deputy

FORM 985 H. C. MILLER CO., MILWAUKEE

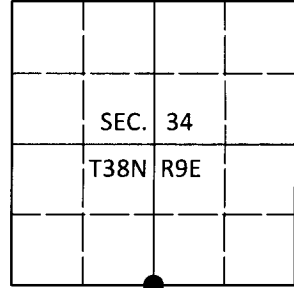
3809340020

**U.S. PUBLIC LAND SURVEY MONUMENT RECORD**

Note: This form is intended and designed to fulfill all requirements of Wisconsin Administrative Code, Chapter A-E 7.08 U.S. Public Land Survey Monument Record (3)(a-i).

(a) CORNER LOCATION  
 1/4 Cor. of Secs. 3 & 34  
 Township 37 & 38 North  
 Range 9 East of the 4th P.M.  
 Town of Pine Lake & Sugar Camp  
 County of Oneida

WISCRS - Oneida County  
 N: 198,750.83 USft  
 E: 279,131.86 USft  
 Datum: NAD 83(2011)  
 GNSS Method: RTN - Direct  
 GNSS Control: WISCORS VRS



(b) HISTORY OF ORIGINAL CORNER ESTABLISHMENT

Original Surveyor:

Original Accessories:

Date of Survey Commenced:  
 Completed:

See previous USPLS Monument Record

(b)(f)(g)(h) Description of monument found at this corner and if it was accepted, state all evidence (material, testimonial, occupational, plats, records, other monuments) used as a basis for accepting. If not accepted or if nothing was found, state evidence used as basis for establishing location. If re-established through lost corner proportionate methods, indicate all monuments, distances and directions used to establish. Indicate type of monument and sign post found or set.

*This is a perpetuation of a previous USPLS Monument Record by Philip T. Hansen, RLS dated November 4, 1976 and filed in the office of the Oneida County Register of Deeds. A complete history of the corner can be found on the previous monument record. I accept the previous location as a true and faithful perpetuation or reestablishment of the original corner location and further perpetuate it as follows.*

*September 28, 2018: I found and accepted the record monument, a 2-1/2" diam. iron pipe with a 4" sq. RIPCO brass plate projecting 4" above the ground surface. The record bearing tree at N17°E is now a stump. I found or established accessories as shown below. I found a white vinyl sign post bearing West, 0.7 ft.*

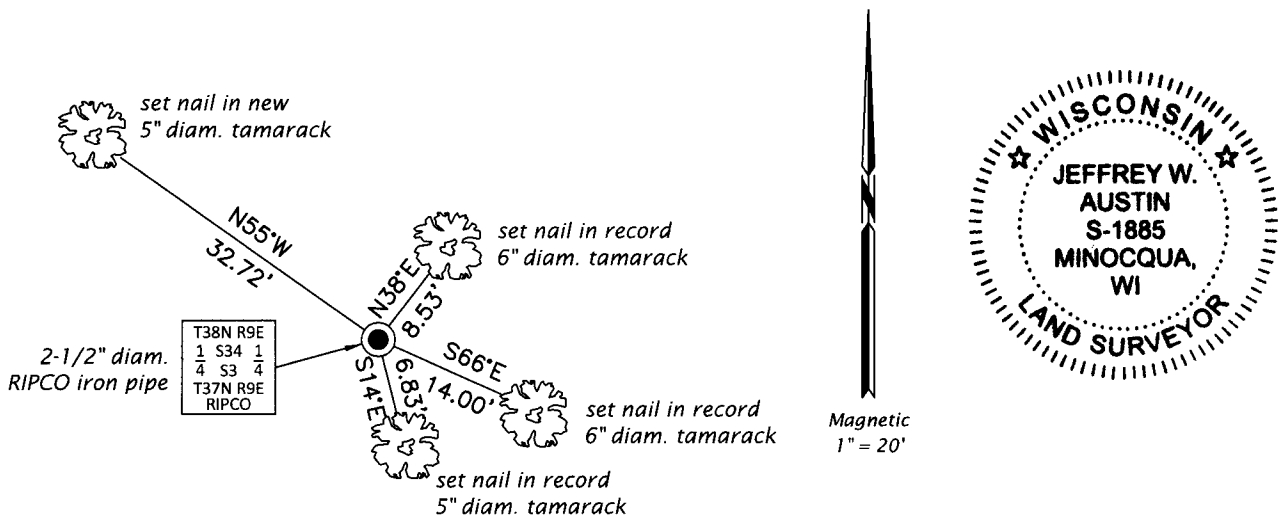
*The coordinate value shown has been verified by at least one of the following methods: 1) comparison to a previously GPS determined published value; 2) the value is the average of two or more GPS observations at a markedly different time; 3) one or more distances were measured back to the GPS observed corner from temporary GPS observed offset locations.*

REGISTER OF DEEDS OFFICE  
 ONEIDA COUNTY  
 FILED

DEC 31 2018

KYLE J. FRANSON  
 REGISTER OF DEEDS

(c)(d)(e) Plan view of corner with ties to at least 4 witness monuments. If in disagreement with previously established corner, show the distances between the two corners and also indicate the ties to the disputed.



(i) I, Jeffrey W. Austin, Professional Land Surveyor No. S-1885, hereby certify that the corner location on this record was determined by me or under my direction and control and that this U.S. Public Land Survey Monument Record is correct and complete to the best of my knowledge and belief.

*[Handwritten Signature]*  
 Signature

13 DEC 2018  
 Date