

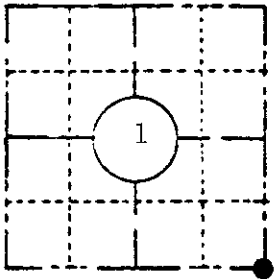
U. S. PUBLIC LAND SURVEY MONUMENT RECORD

I N S T R U C T I O N S :

This record shall show the location of the corner and shall include all of the following nine elements (a through i).

- (a) Identify the corner by reference to the U.S. public land survey system.

The Southeast Corner
of Section 1,
T 38 N, R 10 E.



LOCATION SKETCH

(Location of landmark indicated by "●")



- (b) Describe any record evidence, monument evidence, occupational evidence, testimonial evidence or any other material evidence you considered, and whether the monument was found or placed.

Found 1 1/2" dia. hole in road 4' east of centerline at the location as shown on the plat of Timbershore Heights.

Found the following reference point: PK nail in power pole #65EE42
S 77° 41' E, 13.60 feet.

- (c) In the plan view drawing below, provide reference ties to at least 4 witness monuments, or, if the location is within a municipality, to at least 2 witness monuments. (Witness monuments shall be made of concrete, natural stone, iron or other equally durable material, except wood.) Describe witness monuments.

Set 4" X 36" County breakaway monument
5" beneath road surface.

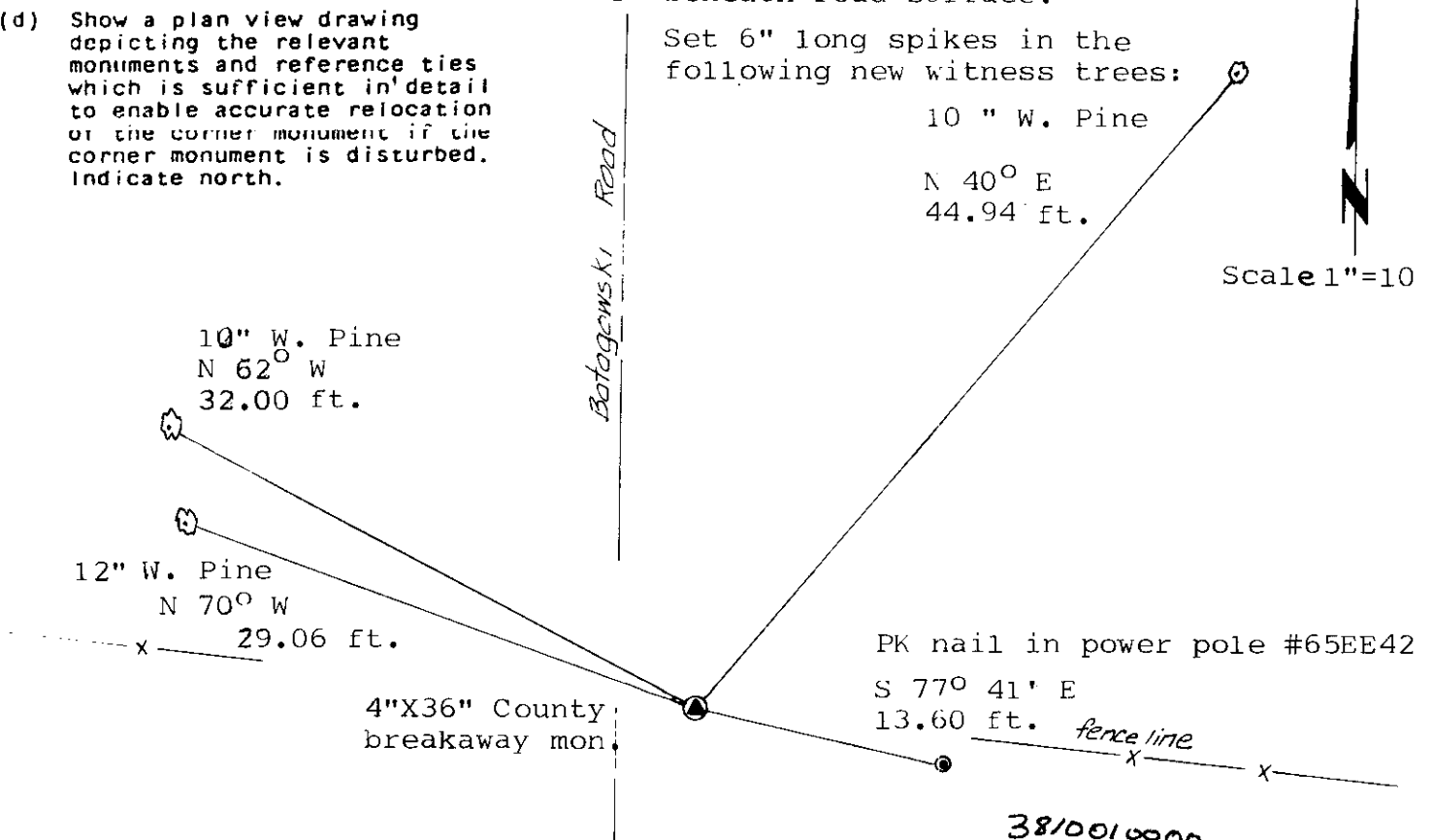
- (d) Show a plan view drawing depicting the relevant monuments and reference ties which is sufficient in detail to enable accurate relocation of the corner monument if the corner monument is disturbed. Indicate north.

Set 6" long spikes in the following new witness trees:

10" W. Pine

N 40° E
44.94 ft.

Scale 1"=10 ft.



(e) Describe any material discrepancy between the location of the corner as restored or reestablished and the location of that corner as previously restored or reestablished by distance and direction. Show the discrepancy on the plan view drawing under (d), above. Show the distances between the corner as previously restored or reestablished and (1) the corner as restored or reestablished, and (2) to at least 2 of the witness monuments shown on the drawing in (d), above.

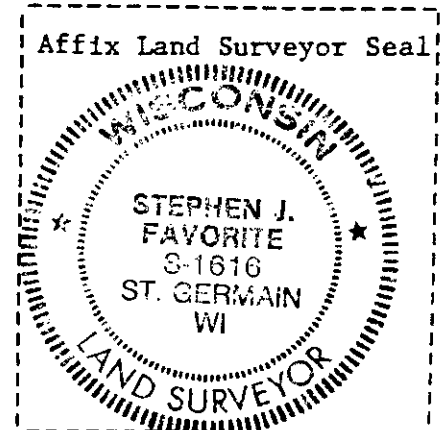
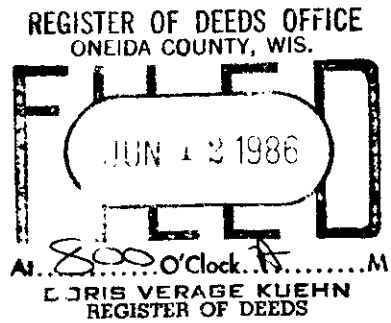
See drawing (d)

(f) Was the corner restored through acceptance of (1) an obliterated evidence location, or, (2) a found perpetuated location?

The acceptance of a found perpetuated location of remaining reference point.

(g&h) Was the corner reestablished through lost corner proportionate methods? If so, show the method, including the directions and distances to other public land survey corners used as evidence or used for proportioning in determining the corner location?

No



(i) I, Stephen J. Favorite, Land Surveyor #S-1616, (type or print name) certify that the corner location shown on this record was determined by me or under my direction and control and that this U.S. Public Land Survey Monument Record is correct and complete to the best of my knowledge and belief.

Stephen J. Favorite
Signature

12/1/85
Date

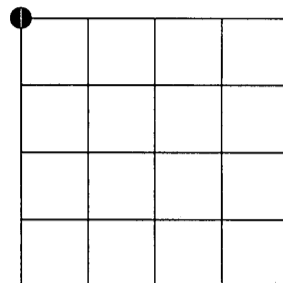
JUL 31 2013

AT _____ O'CLOCK _____ M
KYLE J. FRANSON
REGISTER OF DEEDS

U.S. PUBLIC LAND SURVEY MONUMENT RECORD

NOTE: This form is intended and designed to fulfill all requirements of Wisconsin Administrative Code, Chapter A-E 7.08 U.S. Public Land Survey Monument Record (3)(a)(b)(c)(d)(e)(f)(g)(h)(i). An additional sheet may be added if necessary to conform with said requirements.

(a) Corner location: Northwest Corner Section 7, Township 38 North, Range 11 East of the 4th P.M.
Town of Three Lakes, Oneida County, Wisconsin.

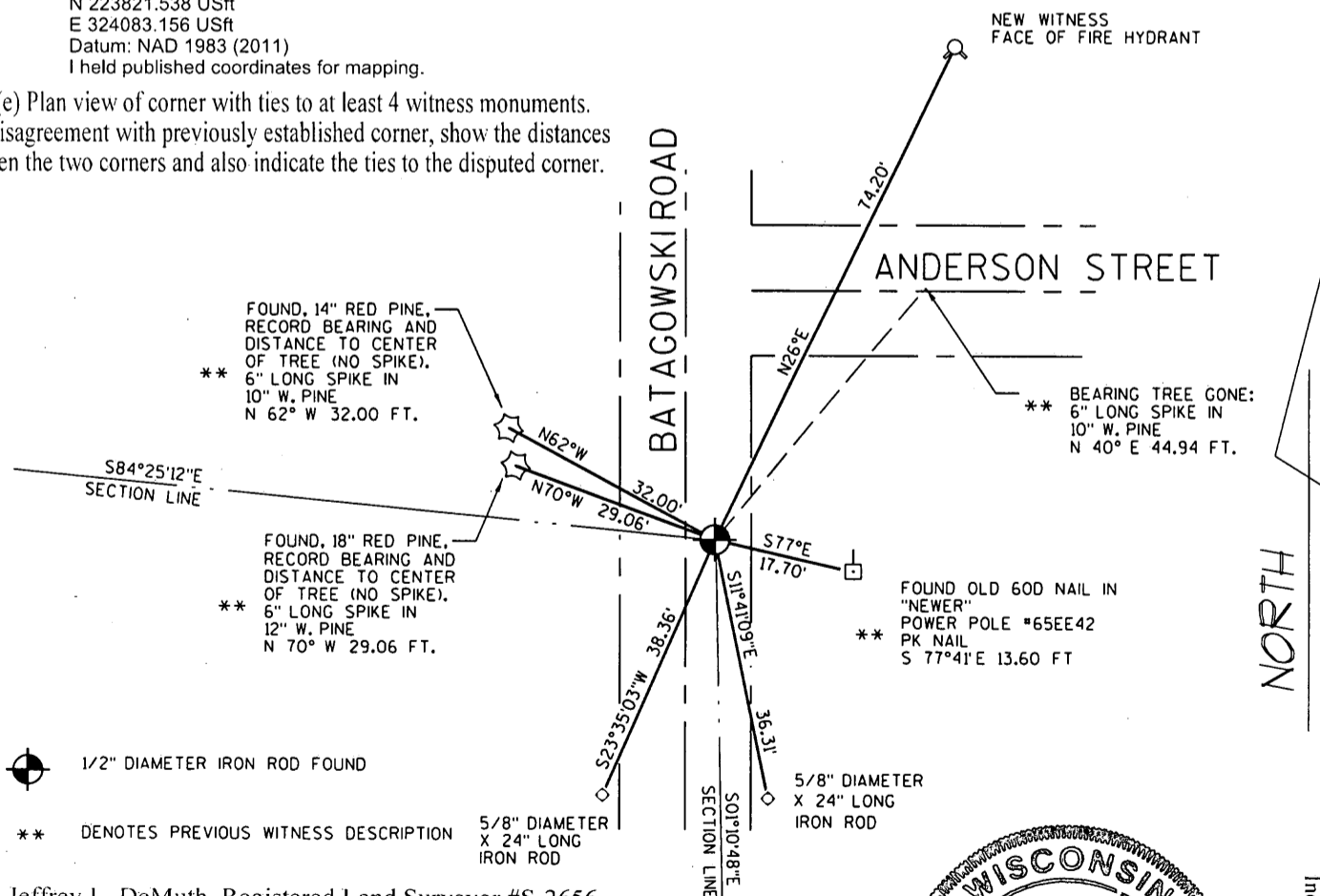


Section 7

(b)(f)(g)(h) Description of monument found at this corner and if it was accepted, state all evidence (material, testimonial, occupational, plats, records, other monuments) used as a basis for accepting. If not accepted or if nothing was found, state evidence used as basis for establishing location. If reestablished through lost corner proportionate methods, indicate all monuments, distances and directions used to establish. Indicate type of monument found or set and sign post.

- 1859 - Hiram C. Fellows set post corner to Sections 1, 6, 7 and 12.
Original BT's:
Birch 6 S23°W 8
Birch 12 N75°W 22
Birch 8 N35°E 30
Sugar 6 S45°E 23
- 1948 - Gaartz Worksheet - Map #L1171, shows a "Diamond" with a "dot" in the center at this location. This symbol is also shown at the North 1/4 of Section 12, where I found a 5" X 5" square concrete monument.
- 12/01/1985 Stephen J. Favorite finds a "1 1/2" dia. hole in road 4' east of centerline at the location shown on the plat of Timberline Heights", and a PK Nail in power pole #65EE42.
Favorite Sets a 4" X 36" County breakaway monument 5" below road surface.
USPLS Monument Record 3810010000
- 01-19-1989 James L. Will finds a 1" Iron Pipe, Map #B2317
- 06-22-1998 Kip W. Soder finds a 1" dia. iron pipe, Map #B3995
- 11-16-2000 Aero Metric ties corner to Oneida County Coordinate System-PK Nail
N 223821.458
E 324083.265
- 05-17-2005 Michael E. Weber finds a P.K. Nail, Map #B5867
- 05-29-2013 I find and accept a 1/2" diameter iron rod that fits the Aero Metric Coordinates.
Favorites witness monuments were mis labled. My witnesses are shown below.
- 05-29-2013 WISCRS (Oneida County):
N 223821.538 USft
E 324083.156 USft
Datum: NAD 1983 (2011)
I held published coordinates for mapping.

(c)(d)(e) Plan view of corner with ties to at least 4 witness monuments.
If in disagreement with previously established corner, show the distances between the two corners and also indicate the ties to the disputed corner.

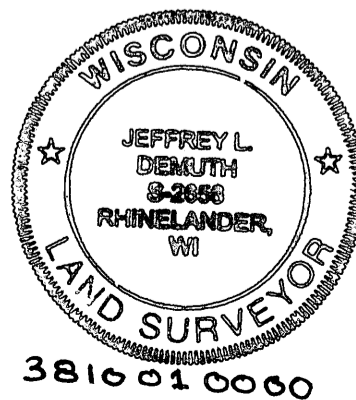


(i) I, Jeffrey L. DeMuth, Registered Land Surveyor #S-2656, hereby certify that the corner location on this record was determined by me or under my direction and control and that this U.S. Public Land Survey Monument Record is correct and complete to the best of my knowledge and belief.

Signature

Date

07/18/2013



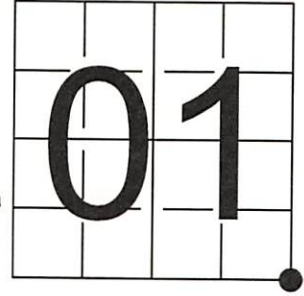
Index No. E 1

U S PUBLIC LAND SURVEY MONUMENT RECORD

NOTE: This form is intended and designed to fulfill all requirements of Wisconsin Administrative Code, Chapter A-E 7.08 U.S. Public Land Survey Monument Record (3) (a-i)

A-E 7.08(3)(a) Identity of corner
 SOUTHEAST CORNER OF SECTION 01
 TOWNSHIP 38 NORTH
 RANGE 10 EAST OF THE 4TH PM
 TOWN OF THREE LAKES
 COUNTY OF ONEIDA

WISCRS - ONEIDA COUNTY
 N: 223,821.474 USft
 E: 324,083.360 USft
 Datum: NAD83 (2011)
 GNSS Method RTN - Direct
 GNSS Control WISCRS VRS



The coordinate value shown has been verified by the average of two or more GPS observations at a markedly different time.

A-E 7.08(3)(b) Description of any record evidence, monument evidence, occupational evidence, testimonial evidence, or any other material evidence.

Original Surveyor: Hiram C. Fellows

REGISTER OF DEEDS OFFICE
 ONEIDA COUNTY
 FILED

Date of Original Survey Commenced: July, 1859
 Completed: _____, 1859

JAN 19 2022

Original Accessories:

See Previous Monument Record:
 Index No. E-1

Birch	6	S. 23° W.	8
Birch	12	N. 75° W.	22
Birch	8	N. 35° E.	30
Sugar	6	S. 45° E.	23

KYLE J. FRANSON
 REGISTER OF DEEDS

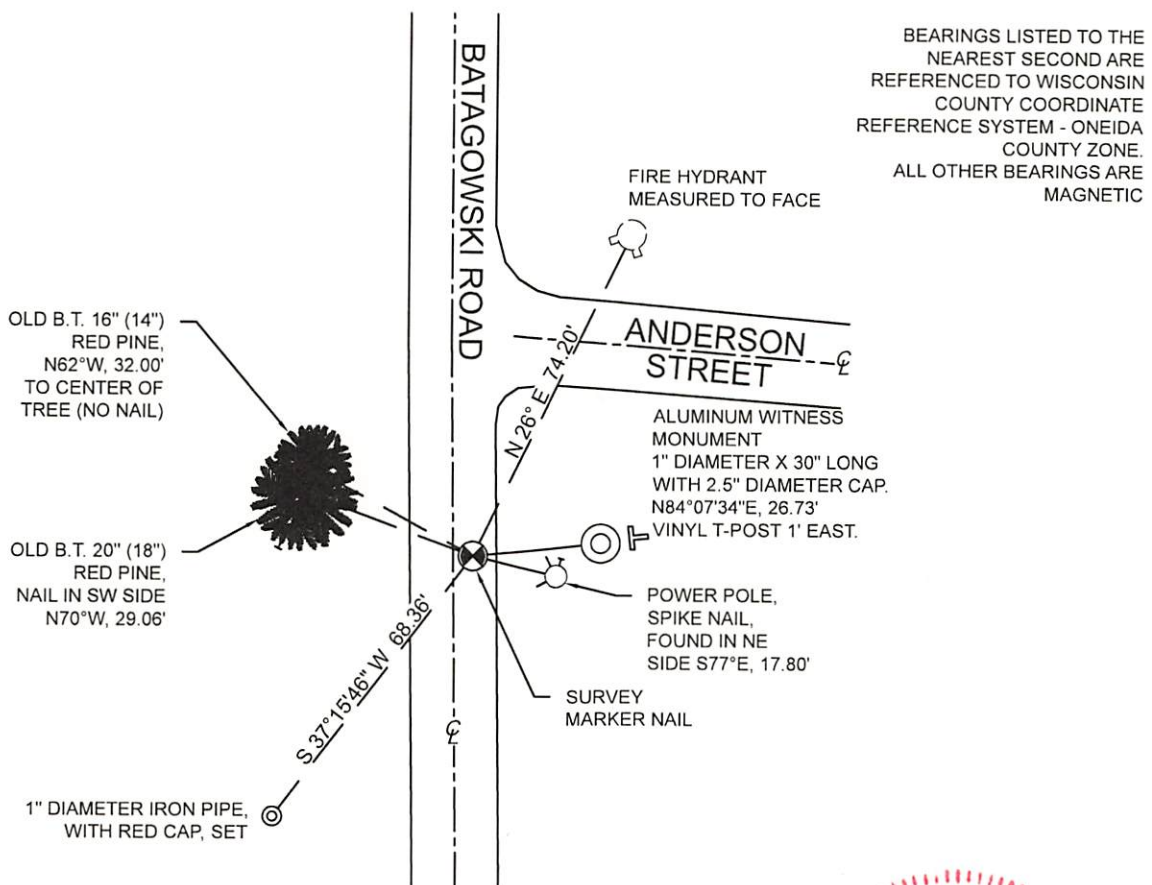
May 29, 2013 - Surveyor 2656 - Jeffrey L. DeMuth - found a 1/2" diameter iron rod, verifies witnesses previously set by others, and establishes 3 new witnesses.

A-E 7.08(3)(f) Corner was restored through acceptance of an obliterated location.

May 26, 2021 - In preparation of a road reconstruction project, I found the previously mentioned 1/2" iron rod and all witnesses intact, and made measurements of the rod and witnesses.

November 04, 2021 - I returned to the location after road reconstruction and found that the 1/2" iron rod as well as 2 of the witnesses to be obliterated, and set a Survey Marker Nail corner from existing witnesses and measurements made previously.

A-E 7.08(3)(c)(d)(e)(h) Plan view of corner with references to at least 4 witness monuments. If in disagreement with previously established corner, show the distances between the two corners and also indicate the ties to the disputed. The directions and distances to other public land survey corners used as evidence or used for determining the corner location.



A-E 7.08(3)(i) I, Jeffrey L. DeMuth, Professional Land Surveyor No. S-2656, hereby certify that the corner location on this record was determined by me or under my direction and control and that this U.S. Public Land Survey Monument Record is correct and complete to the best of my knowledge, and belief



SIGNATURE *Jeffrey L. DeMuth*

December 30, 2021
 DATE