

U.S. PUBLIC LAND SURVEY MONUMENT RECORD

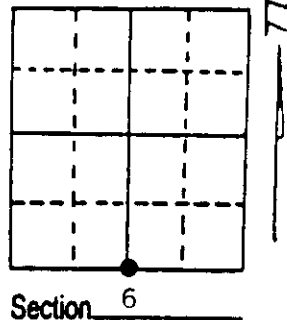
Note: This form is intended and designed to fulfill all requirements of Wisconsin Administrative Code, Chapter A-E 7.08 U.S. Public Land Survey Monument Record (3) (a) (b) (c) (d) (e) (f) (g) (h) (i). An additional sheet may be added if necessary to conform with said requirements.

(a) Corner location: Township 38 North

Range 10 East

Town/City/Village Sugar Camp

County Oneida



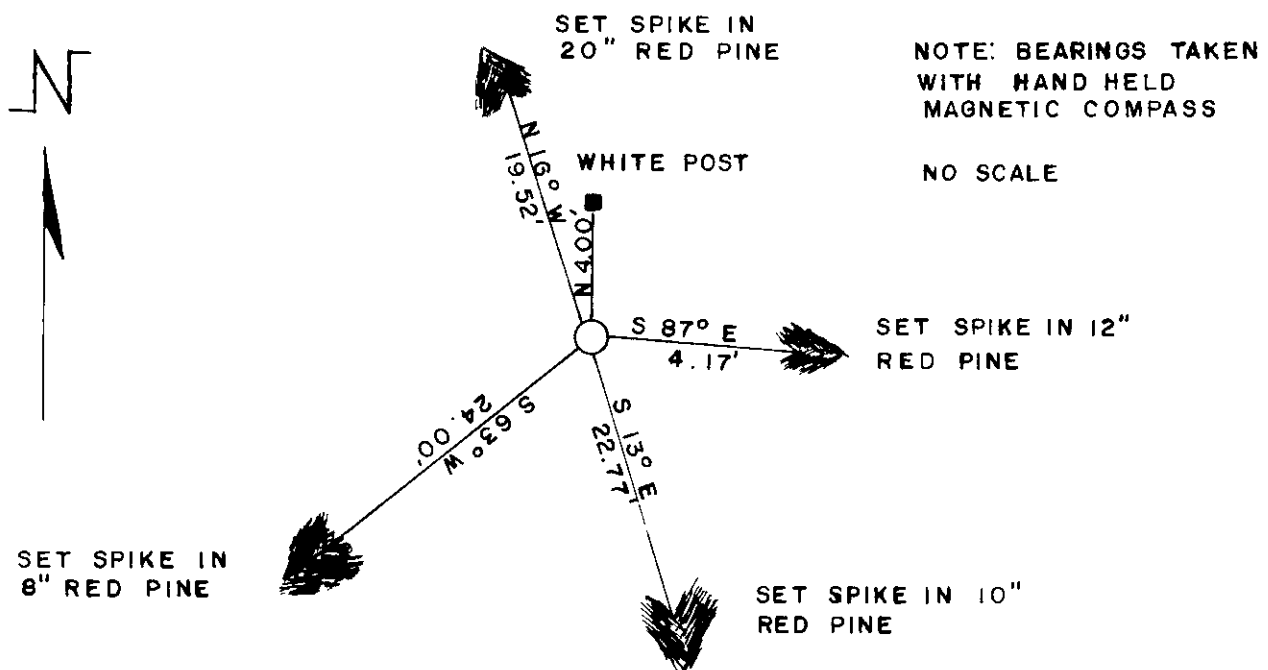
(b) (f) (g) (h) Description of monument found at this corner and if it was accepted, state all evidence (material, testimonial, occupational, plats, records, other monuments) used as a basis for accepting. If not accepted or if nothing was found, state evidence used as basis for establishing location. If reestablished through lost corner proportionate methods, indicate all monuments, distances and directions used to establish. Indicate type of monument found or set and sign post.

1863-William E. Daugherty set post 8" Hemlock South 19 degrees West 28 links, 12" Sugar Maple North 30 degrees East 17 links

1966-Ripco set monument

1992-William Bandow found Ripco Monument & witnessed as shown below:

(c) (d) (e) Plan view of corner with ties to at least 4 witness monuments. If in disagreement with previously established corner, show the distances between the two corners and also indicate the ties to the disputed corner.



(i) I, William E. Bandow
 (type or print name) certify that the corner location on this record was determined by me or under my direction and control and that this U.S. Public Land Survey Monument Record is correct and complete to the best of my knowledge and belief.

William E. Bandow 10-29-93
 Signature Date



Stamp 3810060020

Oneida County
Land Information Office
Filed
1/12/2026

U.S. PUBLIC LAND SURVEY MONUMENT RECORD

NOTE: This form is intended and designed to fulfill all requirements of Wisconsin Administrative Code, Chapter A-E 7.08 U.S. Public Land Survey Monument Record (3) (a-i)

A-E 7.08(3)(a) Identity of corner:
South 1/4 Corner Section 06,
Township 38 North, Range 10 East
of the Fourth Principal Meridian,
Town of Sugar Camp, Oneida County,
Wisconsin

WISCRS - ONEIDA COUNTY
N: 225,586.744 USft (XXX,XXX.XXX)
E: 295,103.088 USft (XXX,XXX.XXX)
Datum: NAD83 (2011)
GNSS Method RTN
GNSS Control WISCORS VRS

The coordinate value shown has been verified by the average of two or more GPS observations at a markedly different time. Coordinates shown in parenthesis are previously published values.

A-E 7.08(3)(b)

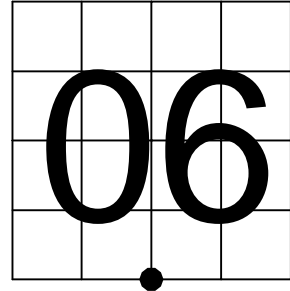
Original Surveyor: William E. Daugherty - September 7, 1863 to September 13, 1863
Hemlock 8 - S 19° W, 28 Links, Sugar 12 - N 30° E, 17 Links

See previous U.S. Public Land Survey Monument Record - E-3 - December 29, 1993 - Surveyor 1192 - William E. Bandow - THENCE:

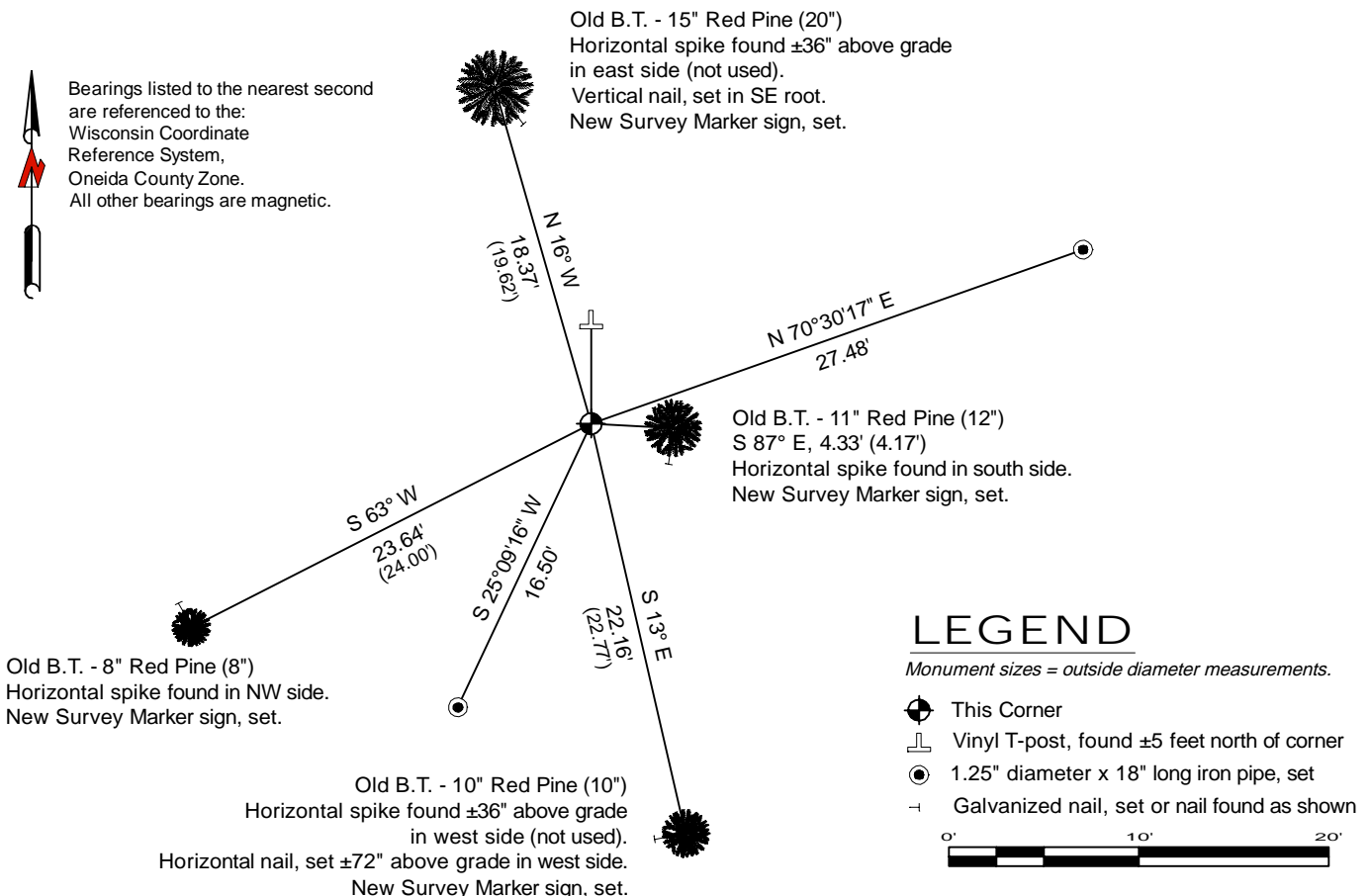
December 8, 2025 - I found a 1.9 diameter iron pipe monument with a 3" square plate stamped to identify the corner location affixed to the top. The monument is on high land, extends ±26" above grade, and is ±6" out of plumb, leaning NE. I measured to the base of the monument where it enters the ground.

I also found 4 of Bandow's bearing trees alive and in good condition.
I established 2 new reference monuments as shown below.

A-E 7.08(3)(c)(d) Plan view of corner with references
to at least 4 witness monuments.



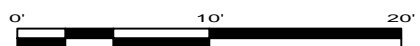
Bearings listed to the nearest second are referenced to the:
Wisconsin Coordinate Reference System,
Oneida County Zone.
All other bearings are magnetic.



LEGEND

Monument sizes = outside diameter measurements.

- This Corner
- Vinyl T-post, found ±5 feet north of corner
- 1.25" diameter x 18" long iron pipe, set
- Galvanized nail, set or nail found as shown



A-E 7.08(3)(e) 1863 Surveyor set a post, 1992 Surveyor found a RIPCO monument, as did I in 2025.

A-E 7.08(3)(f) I accept this monument in good faith as a FOUND PERPETUATED LOCATION of the corner.

A-E 7.08(3)(g)(h) This corner was not determined through lost-corner-proportionate methods.

A-E 7.08(3)(i) I, Jeffrey L. DeMuth, Professional Land Surveyor No. S-2656, hereby certify that the corner location on this record was determined by me or under my direction and control, and that this U.S. Public Land Survey Monument Record is correct and complete to the best of my knowledge, and belief.



SIGNATURE

December 15, 2025

DATE

43810060020