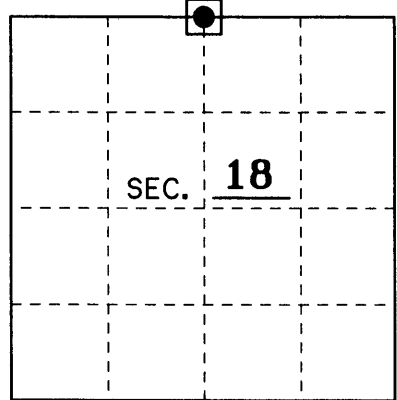


U.S. PUBLIC LAND SURVEY MONUMENT RECORD

Note: This form is intended and designed to fulfill all requirements of Wisconsin Administrative Code, Chapter A-E 7.08 U.S. Public Land Monument Record (3)(a)(b)(c)(d)(e)(f)(g)(h)(i). An additional sheet may be added if necessary to conform with said requirements.

(a) CORNER LOCATION: North County or State Plane Coordinates
1/4 Corner of Section 18 Northing _____
 Township 38 North Easting _____
 Range 10 East Datum Base _____
 Township/City Sugar Camp County of Oneida



(b) HISTORY OF ORIGINAL CORNER ESTABLISHMENT Original B.T.'s
 Original Surveyor: William Daugherty 12" W.Birch S 5°W 8 Lks.
 Date of Survey: September, 1863 7" Cedar S 41°E 3 Lks.

(b)(f)(g)(h) Description of monument found at this corner and if it was accepted, state all evidence (material, testimonial, occupational, plats, records, other monuments) used as a basis for accepting. If not accepted or if nothing was found, state evidence used as basis for establishing location. If reestablished through lost corner proportionate methods, indicate all monuments, distances and directions used to establish. Indicate type of monument and sign post found or set.

SEPTEMBER, 1863: WILLIAM DAUGHERTY SET A WOOD POST FOR THE ORIGINAL CORNER. HE ALSO MADE TWO B.T.'s AS NOTED ABOVE.

3-14-1962: RIPCO FOUND THE TWO SECTION CORNERS AND PROPORTIONED THE 1/4 CORNER THEY SET A 2" IRON PIPE WITH A 4" SQUARE TABLET FOR THE CORNER.

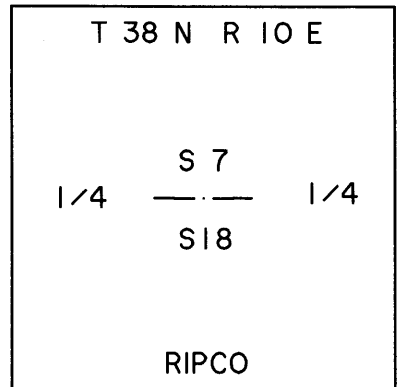
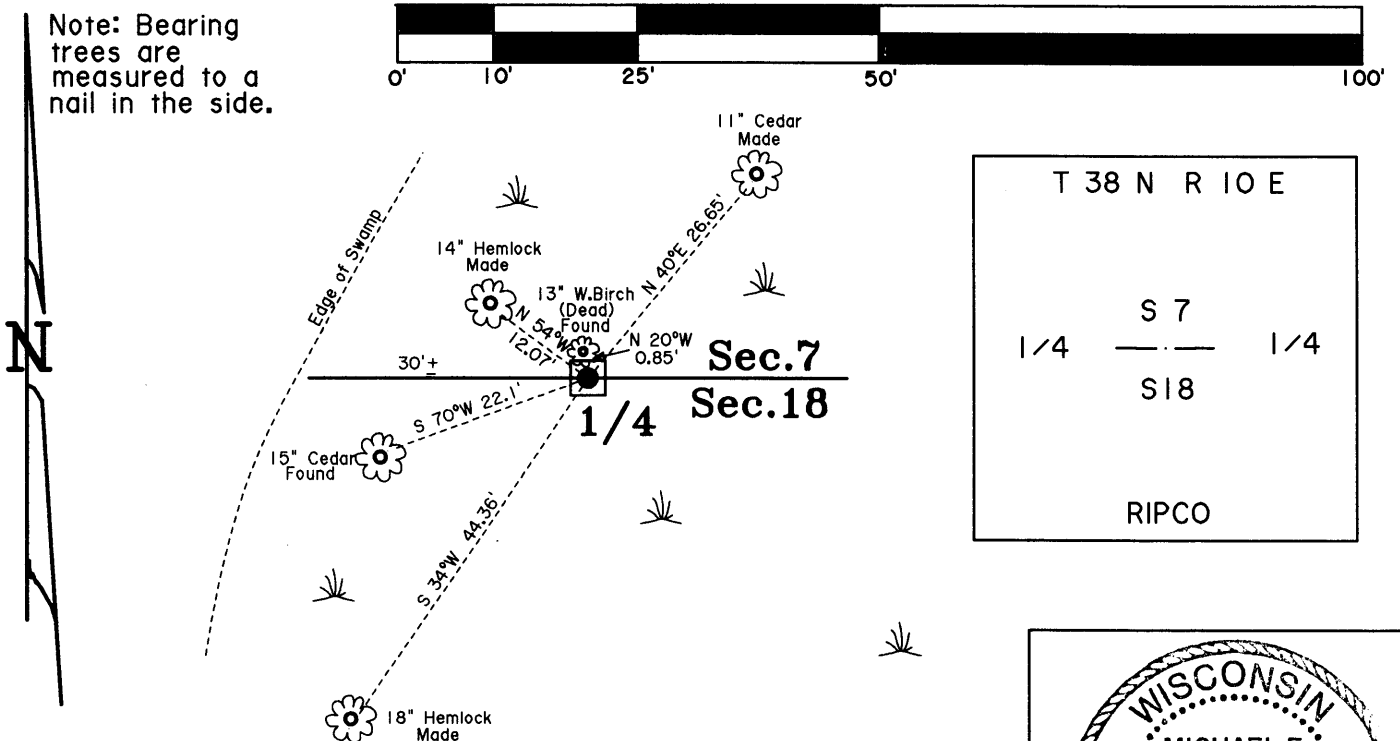
3-25-1968: SCOTT FOUND A CAPPED IRON PIPE AND USES IT FOR THE 1/4 CORNER IN HIS SURVEY OF SECTION 18. HE ALSO NOTES A 12" CEDAR S 80°W 22 FEET FOR A B.T. ONEIDA COUNTY FILE #B6168.

6-03-2004: MSA FOUND AND USED A 2" IRON PIPE W/4" SQUARE TABLET FOR THE 1/4 CORNER IN THEIR SURVEY. ONEIDA COUNTY FILE #C2078.

10-25-2006: I, MICHAEL E. WEBER, OF EAGLE LANDMARK SURVEYING FOUND A 1-1/2" IRON PIPE SQUARE TOP 2.4 FEET ABOVE THE GROUND. I ALSO FOUND TWO OLD B.T.'S AND MADE THREE NEW ONES AS SHOWN BELOW. THE TABLET IS STAMPED TO IDENTIFY THE CORNER AS SHOWN BELOW. I BLAZED THE TREES AND FOUND A SIGN POST 1 FOOT SOUTHWEST.

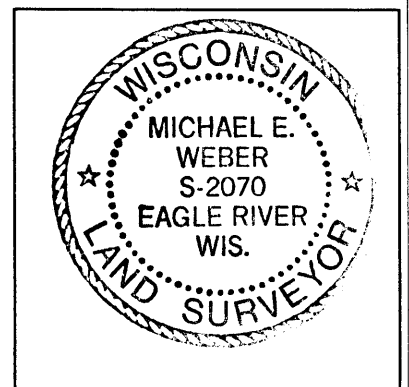
(c)(d)(e) Plan view of the corner with ties to at least 4 witness monuments. If in disagreement with previously established corner, show the distances between the two corners and also indicate the ties to the disputed.

SCALE: 1" = 20'



(i) I, Michael E. Weber R.L.S. No. 2070
 hereby certify that the corner location on this record was determined by me or under my direction and control and that this U.S. Public Land Survey Monument Record is correct and complete to the best of my knowledge and belief.

Signature Michael E Weber Date 11-06-2006



Index No. J-3

3810 0700 20

Oneida County
Land Information Office
Filed
1/12/2026

U.S. PUBLIC LAND SURVEY MONUMENT RECORD

NOTE: This form is intended and designed to fulfill all requirements of Wisconsin Administrative Code, Chapter A-E 7.08 U.S. Public Land Survey Monument Record (3) (a-i)

A-E 7.08(3)(a) Identity of corner:
South 1/4 Corner Section 07,
Township 38 North, Range 10 East
of the Fourth Principal Meridian,
Town of Sugar Camp, Oneida County,
Wisconsin

WISCORS - ONEIDA COUNTY
N: 220,318.703 USft (XXX,XXX.XXX)
E: 295,146.800 USft (XXX,XXX.XXX)
Datum: NAD83 (2011)
GNSS Method RTN
GNSS Control WISCORS VRS

The coordinate value shown has been verified by the average of two or more GPS observations at a markedly different time. Coordinates shown in parenthesis are previously published values.

A-E 7.08(3)(b)

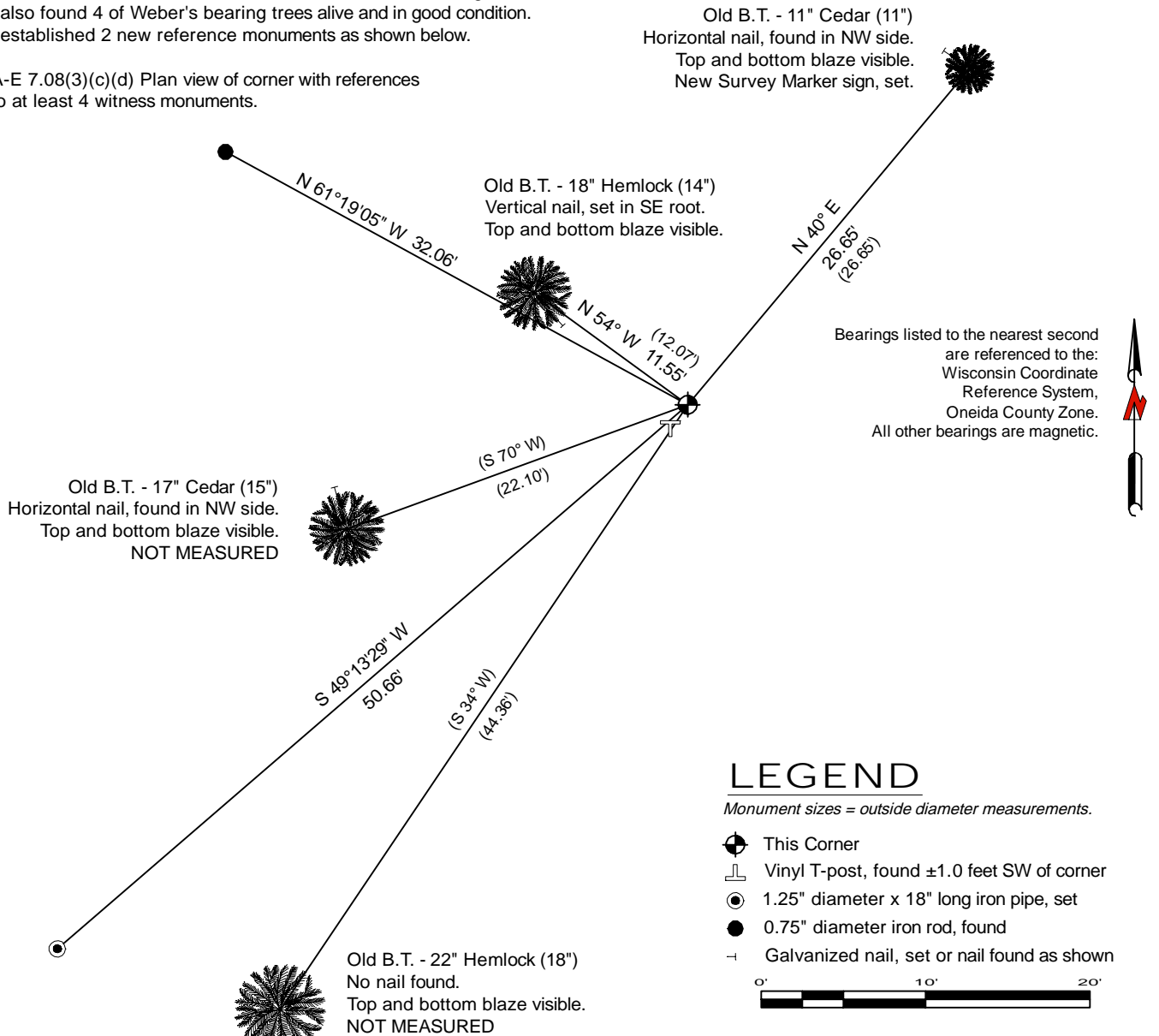
Original Surveyor: William E. Daugherty - September 7, 1863 to September 13, 1863
Birch 12 - S 5° W, 8 Links, Cedar 7 - S 41° E, 3 Links

See previous U.S. Public Land Survey Monument Record - J-3 - November 06, 2006 - Surveyor 2070 - Michael E. Weber - THENCE:

December 8, 2025 - I found a 1.9 diameter iron pipe monument with a 3" square plate stamped to identify the corner location affixed to the top. The monument is in an alder swamp (near the west edge), extends ±24" above grade, and is ±6" out of plumb, leaning NE. measured to the base of the monument where it enters the ground.

I also found 4 of Weber's bearing trees alive and in good condition.
I established 2 new reference monuments as shown below.

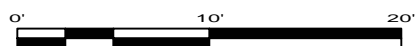
A-E 7.08(3)(c)(d) Plan view of corner with references to at least 4 witness monuments.



LEGEND

Monument sizes = outside diameter measurements.

- This Corner
- Vinyl T-post, found ±1.0 feet SW of corner
- 1.25" diameter x 18" long iron pipe, set
- 0.75" diameter iron rod, found
- Galvanized nail, set or nail found as shown

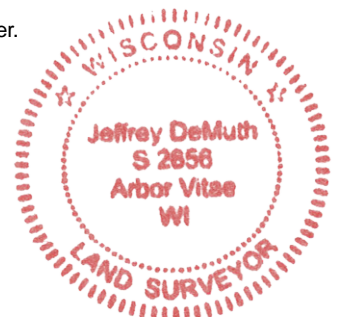


A-E 7.08(3)(e) 1863 Surveyor set a post, 2006 Surveyor found 1 1/2" iron pipe square top, I found a similar monument in 2025.

A-E 7.08(3)(f) I accept this monument in good faith as a FOUND PERPETUATED LOCATION of the corner.

A-E 7.08(3)(g)(h) This corner was not determined through lost-corner-proportionate methods.

A-E 7.08(3)(i) I, Jeffrey L. DeMuth, Professional Land Surveyor No. S-2656, hereby certify that the corner location on this record was determined by me or under my direction and control, and that this U.S. Public Land Survey Monument Record is correct and complete to the best of my knowledge, and belief.



SIGNATURE

December 15, 2025

DATE

43810070020