

# U.S. PUBLIC LAND SURVEY MONUMENT RECORD

Note: This form is intended and designed to fulfill all requirements of the Wisconsin Administrative Code, Chapter A-E 7.08 U.S. Public Land Monument Record (3)(a)(b)(c)(d)(e)(f)(g)(h)(i). An additional sheet may be added if necessary to conform with said requirements.

REGISTRAR OF DEEDS  
ONEIDA COUNTY  
WI

JUN 22 2017

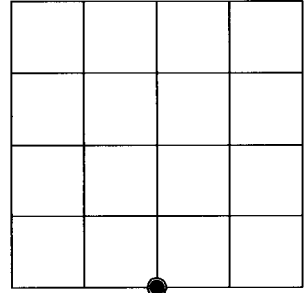
(a) CORNER LOCATION:  
South Quarter Corner of Section 9  
Township 38 North  
Range 10 East  
Town of Sugar Camp  
County of Oneida

WISCRS - Oneida County  
North: 219457.168 USft  
East: 305883.105 USft  
Latitude: 45° 47' 15.10303" N  
Longitude: 89° 14' 49.26522" W  
Datum: NAD 83(2011)  
GNSS Method: RTK - Direct  
GNSS Control: WISCORS VRS  
Record North: 219457.030 USft  
Record East: 305883.056 USft  
Record Datum: NAD 83(1991)

AT \_\_\_\_\_ O'CLOCK \_\_\_\_\_ M  
KYLE J. FRANSON  
REGISTER OF DEEDS

(RECORDING AREA)

SECTION 9



(b) HISTORY OF ORIGINAL CORNER ESTABLISHMENT

Original Surveyor: William E. Daugherty  
Date of Survey: Commenced September 7, 1863  
Completed September 13, 1863  
Original B.T.'S: Birch 20" N 30°E, 20 lks.  
Sugar 8" S 67°W 8 lks.

(f)(g)(h) DESCRIPTION OF MONUMENT FOUND AT THIS CORNER AND IF IT WAS ACCEPTED, STATE ALL EVIDENCE (MATERIAL, TESTIMONIAL, OCCUPATIONAL, PLATS, RECORD, OTHER MONUMENTS) USED AS A BASIS FOR ESTABLISHING LOCATION. IF NOT ACCEPTED OR IF NOTHING WAS FOUND, STATE EVIDENCE USED AS BASIS FOR ESTABLISHING LOCATION. IF REESTABLISHED THROUGH LOST CORNER PROPORTIONATE METHODS, INDICATE ALL MONUMENTS, DISTANCES AND DIRECTIONS USED TO ESTABLISH. INDICATE TYPE OF MONUMENT AND SIGN POST FOUND OR SET.

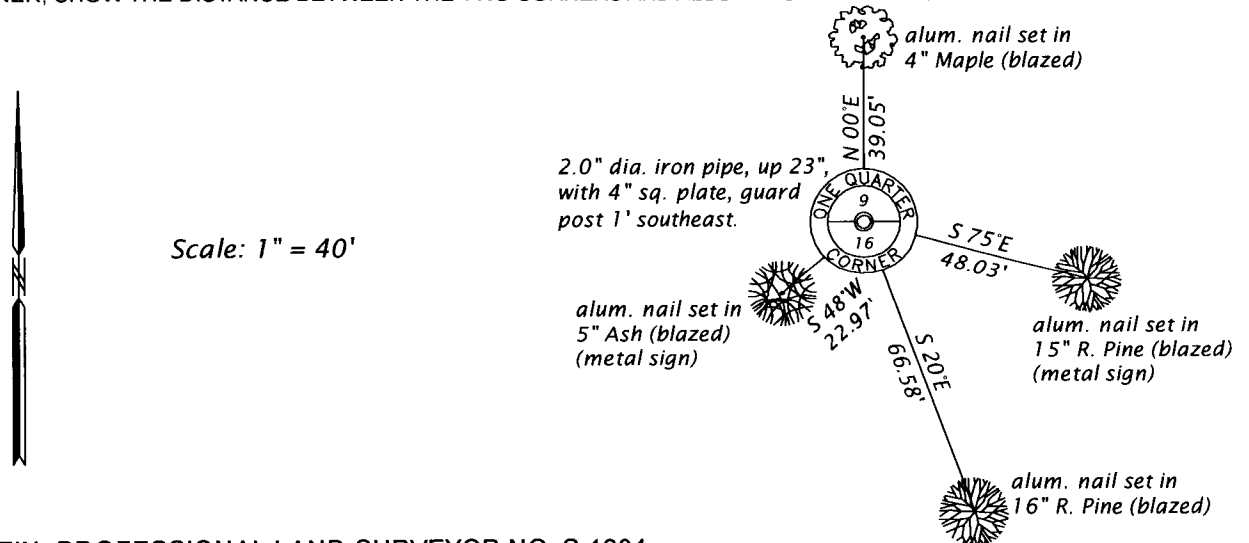
January 2, 1905 - D. H. Vaughan, County Surveyor (Old Field Book 5, page 43 and in Dorr-Vaughan Book, page 340, for a survey in Section 9, T38N, R10E) recovered a 1/4 P set by someone unknown to me. I do not know that it right as there is no gov't. B.T. and from what I could see I do not think the U.S. Surveyor ran this line.

February 1960 - Goddard and RIPCO survey crew (RIPCO Book 3, pages 68 - 76 for survey in Sections 9 and 16, T38N, R10E) note running random and true lines to and from this corner. RIPCO maps filed as A426 and A428 in the county surveyor's office, dated in 1960, legends the corner "Corner established by this survey"

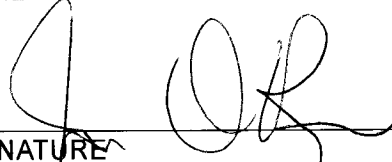
May 17, 2017 - James D. Rein, PLS No. 1234, we recovered a 2.5" dia. iron pipe with a welded 4" sq. plate, stamped to identify corner extending 23" above ground level. I accept this monument position as a good faith reestablishment of a lost quarter corner and we made reference ties as shown in the plan.

The coordinate value shown has been verified by at least one of the following methods: 1) comparison to a previously GPS determined published value; 2) the value is the average of two or more GPS observations at a markedly different time; 3) one or more distances were measured back to the GPS observed corner from temporary GPS observed offset locations.

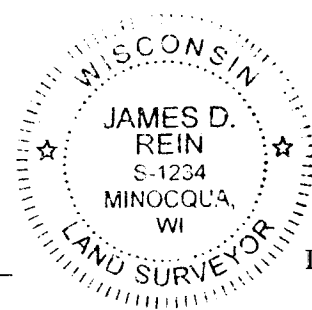
(c)(d)(e) PLAN VIEW OF CORNER WITH TIES TO AT LEAST 4 WITNESS MONUMENTS. IF IN DISAGREEMENT WITH PREVIOUSLY ESTABLISHED CORNER, SHOW THE DISTANCE BETWEEN THE TWO CORNERS AND ALSO INDICATE THE TIES TO THE DISPUTED CORNER.



(i) I, JAMES D. REIN, PROFESSIONAL LAND SURVEYOR NO. S-1234 HEREBY CERTIFY THAT THE CORNER LOCATION ON THIS RECORD WAS DETERMINED BY ME OR UNDER MY DIRECTION AND CONTROL AND THAT THIS U.S. PUBLIC LAND SURVEY MONUMENT RECORD IS CORRECT AND COMPLETE TO THE BEST OF MY KNOWLEDGE AND BELIEF.

  
SIGNATURE

6-12-17  
DATE



INDEX NO. J-11  
3810090020