

U.S. PUBLIC LAND SURVEY MONUMENT RECORD

Index No. J - 1

State of Wisconsin

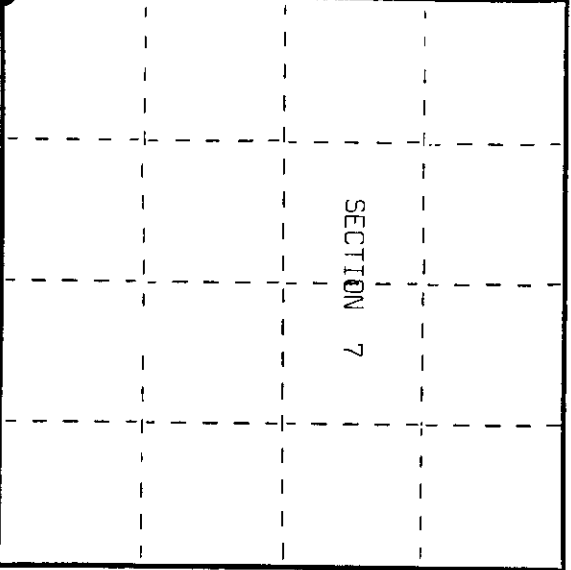
County of Oneida } ss.

I, Kip W. Soder, do hereby certify that on the 24th day of April, 1990, I found evidence of the Southwest corner of Section 7 Township 38 North, Range 11 East, Fourth Principal Meridian, as described hereon; and that from this evidence I established a new monument and accessories as described hereon to perpetuate the original location of this corner.

Resident witnesses:

Kip W. Soder

Robert Schneider



History of original corner establishment:

Corner was established by H.C. Fellows in July of 1859.

Made the following B.T.'s: 6" Spruce S 32° W 30 lks. 7" Spruce N 40° W 28 lks. 8" Spruce N 11° E 55 lks. 8" Spruce S 82° E 45 lks.

Description of corner evidence found:

Found 1" I.P. on East edge of old Blacktop Road from which the following bear:

6" Spruce S 80° W 61.09 feet 7" Spruce S 81° W 61.85 feet

Description of monument and accessories I established to perpetuate the original location of this corner.

Set 2 1/2" x 3/8" Aluminum Oneida County monument stamped to identify corner.

Made the following B.T.'s: 12" Tamarack N 54° E 57.47 feet 9" Tamarack S 29° E 70.64 feet 9" Spruce N 14° W 72.54 feet 9" Spruce S 72° W 79.07 feet

Set plastic survey corner marker East 5.0 feet

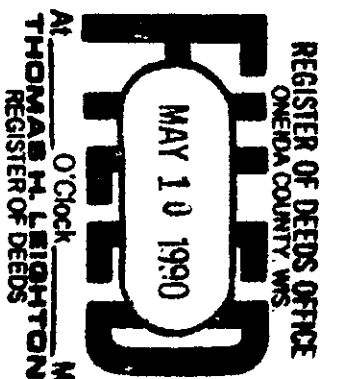
Dated at Three Lakes, Wis., this 26th day of April, 1990

Signature: Kip W. Soder Title: Land Surveyor (County Surveyor, Registered Land Surveyor, or other duly authorized official) Registration No. S-1731

Office of Register of Deeds, County of Oneida, I hereby certify that the within instrument was filed in this office for record on the 24th day of April, 1990 at 10:00 o'clock A.M.

(Register of Deeds)

By: Deputy



32810120000

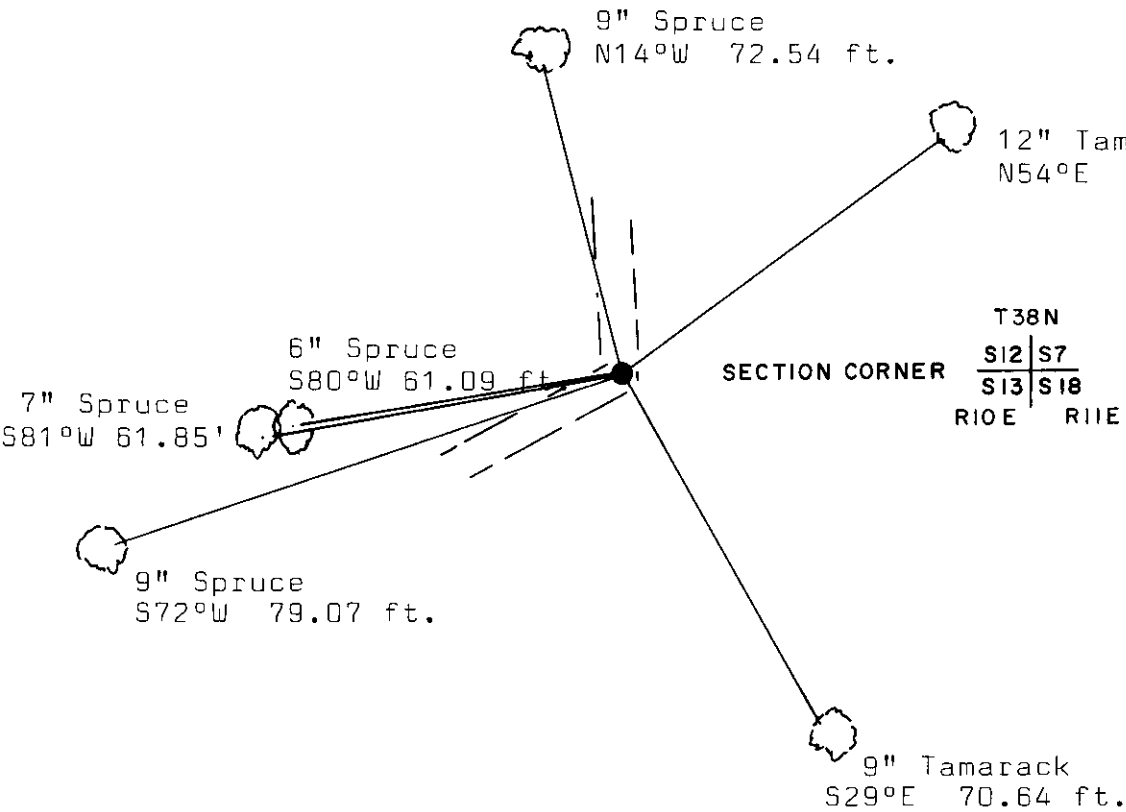
(d) Describe any material discrepancy between the location of the corner as restored or reestablished and the location of that corner as previously restored or reestablished by distance and direction. Show the discrepancy on the plan view drawing under (d), above. Show the distances between the corner as previously restored or reestablished and (1) the corner as restored or reestablished, and (2) to at least 2 of the witness monuments shown on the drawing in (d), above.

None

(f) Was the corner restored through acceptance of (1) an obliterated evidence location, or, (2) a found perpetuated location?

Corner was restored through a found perpetuated location.

(g&h) Was the corner reestablished through lost corner proportionate methods? If so, show the method, including the directions and distances to other public land survey corners used as evidence or used for proportioning in determining the corner location?



(i) I, Kip W. Soder R.L.S. #1731  
 (type or print name) certify that the corner location shown on this record was determined by me or under my direction and control and that this U.S. Public Land Survey Monument Record is correct and complete to the best of my knowledge and belief.

Kip W. Soder April 26, 1990  
 Signature Date

JUL 31 2013

AT \_\_\_\_\_ O'CLOCK \_\_\_\_\_ M  
KYLE J. FRANSON  
REGISTER OF DEEDS

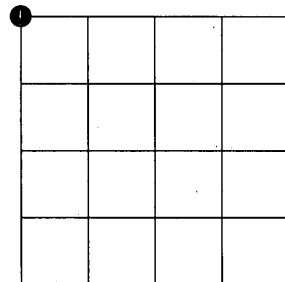
# U.S. PUBLIC LAND SURVEY MONUMENT RECORD

NOTE: This form is intended and designed to fulfill all requirements of Wisconsin Administrative Code, Chapter A-E 7.08 U.S. Public Land Survey Monument Record (3)(a)(b)(c)(d)(e)(f)(g)(h)(i). An additional sheet may be added if necessary to conform with said requirements.

(a) Corner location: Northwest Corner of Section 18, Township 38 North, Range 11 East of the 4th P.M.

Town of Three Lakes, Oneida County, Wisconsin

(b)(f)(g)(h) Description of monument found at this corner and if it was accepted, state all evidence (material, testimonial, occupational, plats, records, other monuments) used as a basis for accepting. If not accepted or if nothing was found, state evidence used as basis for establishing location. If reestablished through lost corner proportionate methods, indicate all monuments, distances and directions used to establish. Indicate type of monument found or set and sign post.



Section 18

1859 - Hiram C. Fellows set post corner to Sections 7, 12, 13 and 18.  
Original BT's:  
Spruce 6 S32°W 30  
Spruce 7 N40°W 28  
Spruce 8 N11°E 55  
Spruce 6 S82°E 45

1917 - D.H. Vaughn (Book 8 Page 78) refers to this corner being "in center of N-S road and about 50 lks N. of center of E-W old road".

1948 - Gaartz Worksheet - Map #L1171 shows a "Diamond" with a "dot" in the center at this location. This symbol is also shown at the South 1/4 of Section 12, where I found a 5"X5" square concrete monument in 2013.

11-17-80 - James L. Will 1 Iron Pipe Map #B1105  
02-07-1990 James L. Will 1" Iron Pipe Map #B7236  
02-07-1990 James L. Will 1" Iron Pipe Map #B2113

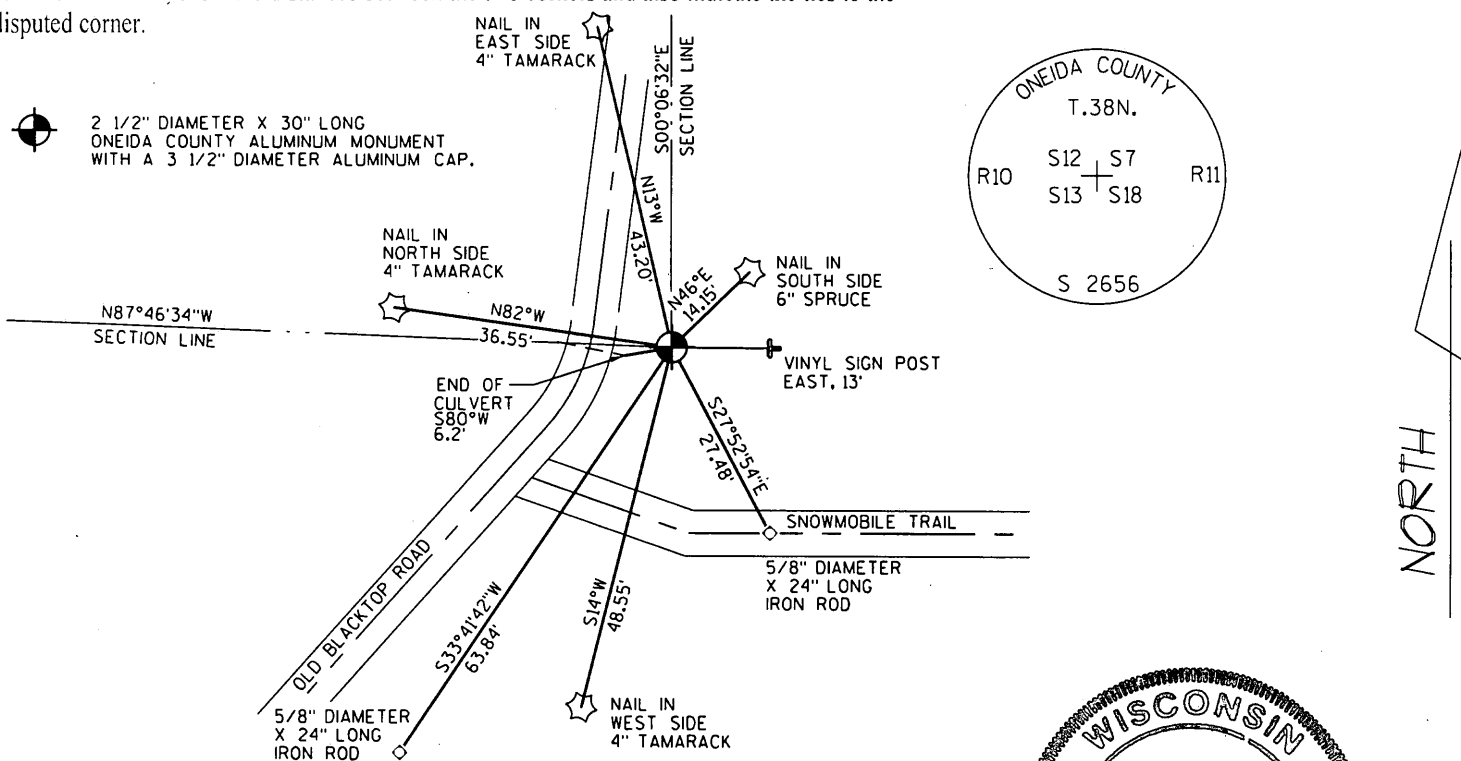
04-26-1990 Kip W. Soder finds 1" I.P. on East edge of Blacktop Road and replaces with a 2 1/2" X 36" Aluminum Oneida County Monument. USPLS Monument Record 3810120000.

11-16-2000 Aero Metric ties corner to Oneida County Coordinate System  
N 218504.826  
E 324143.117

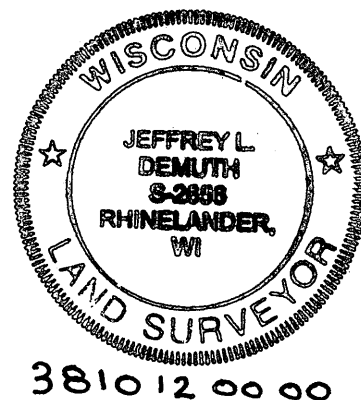
05-29-2013 I find Soder's monument broken off. The bottom section still intact.  
I replaced with a 2 1/2" diameter X 30" long Oneida County Aluminum Monument with a 3 1/2" diameter Aluminum Cap stamped and witnessed as shown below.

05-29-2013 WISCRS (Oneida County):  
N 218504.840 USft  
E 324143.172 USft  
Datum: NAD 1983 (2011)  
I held published coordinates for mapping.

(c)(d)(e) Plan view of corner with ties to at least 4 witness monuments. If in disagreement with previously established corner, show the distances between the two corners and also indicate the ties to the disputed corner.



(i) I, Jeffrey L. DeMuth, Registered Land Surveyor #S-2656, hereby certify that the corner location on this record was determined by me or under my direction and control and that this U.S. Public Land Survey Monument Record is correct and complete to the best of my knowledge and belief.



Index No. 5-1

Signature: *[Handwritten Signature]* Date: 07/10/2013