

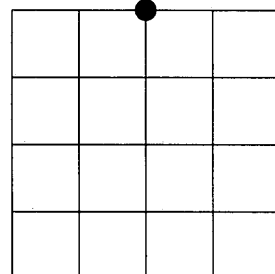
JUL 31 2013

AT _____ O'CLOCK _____ M
KYLE J. FRANSON
REGISTER OF DEEDS

U.S. PUBLIC LAND SURVEY MONUMENT RECORD

NOTE: This form is intended and designed to fulfill all requirements of Wisconsin Administrative Code, Chapter A-E 7.08 U.S. Public Land Survey Monument Record (3)(a)(b)(c)(d)(e)(f)(g)(h)(i). An additional sheet may be added if necessary to conform with said requirements.

(a) Corner location: North 1/4 Corner Section 13, Township 38 North, Range 10 East
of the 4th P.M.
Town of Three Lakes, Oneida County, Wisconsin

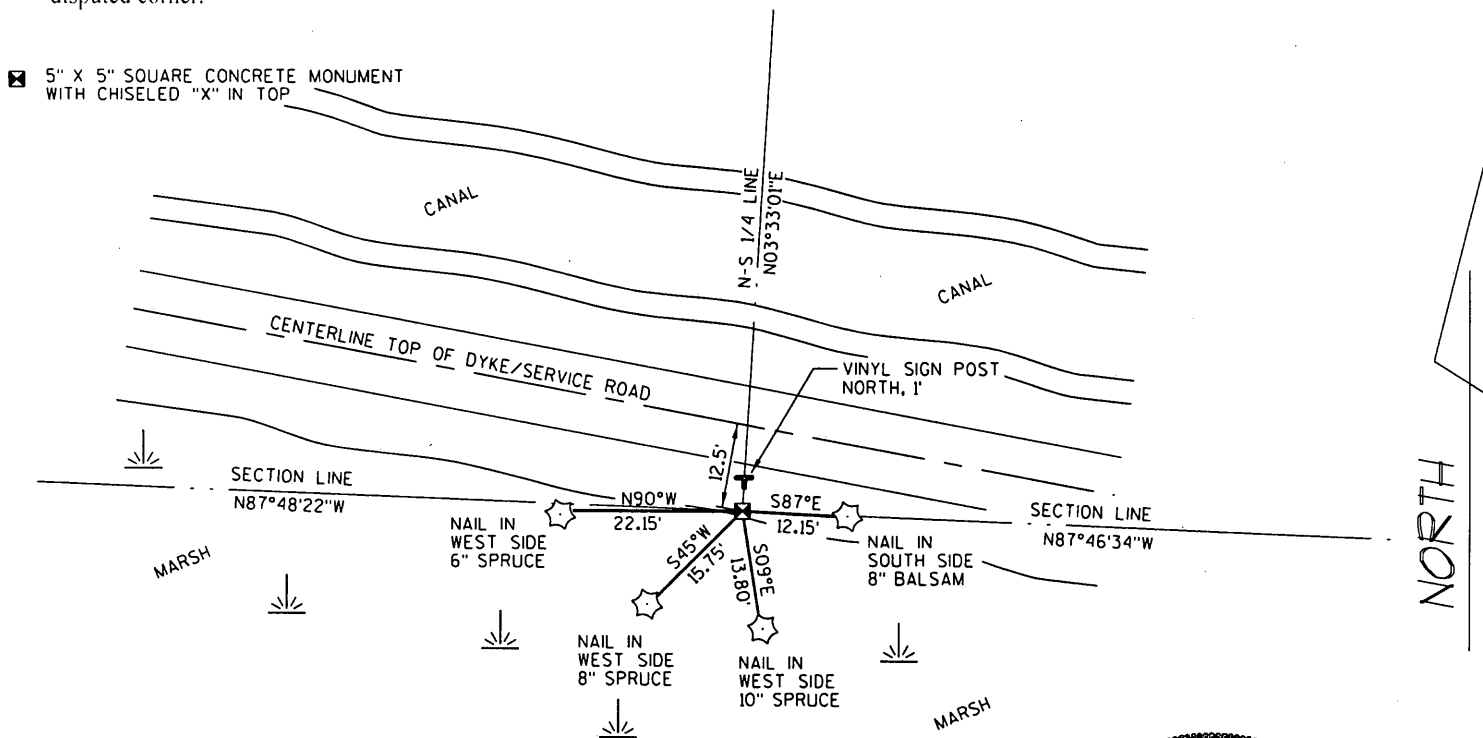


Section 13

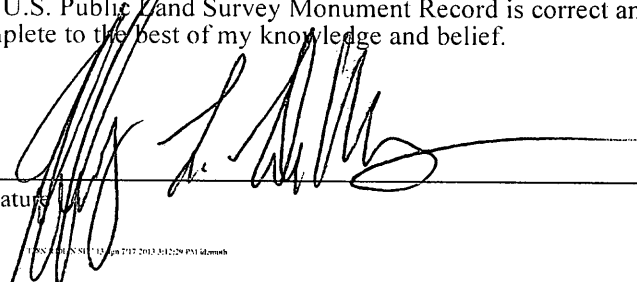
(b)(f)(g)(h) Description of monument found at this corner and if it was accepted, state all evidence (material, testimonial, occupational, plats, records, other monuments) used as a basis for accepting. If not accepted or if nothing was found, state evidence used as basis for establishing location. If reestablished through lost corner proportionate methods, indicate all monuments, distances and directions used to establish. Indicate type of monument found or set and sign post.

- 1863 - William E. Daugherty set quarter Section post.
Original BT's:
Spruce 7 S51°E 97
Tamarac 7 N48°W 135
- 1917 - D.H. Vaughn set 1/4 post on proportion between SE corner Section 13 and MC on east shore of Thunder Lake, between Section 14 and 11. No Bearing Trees.
- 1948 - Gaartz Worksheet - Map #L1171 shows a "Diamond" with a "dot" in the center at this location. Gaartz refers to Vaughns distances and an "apparent 1/8th corner (Vaughn)" to the west of this location. Gaartz may have set a 5" X 5" square concrete monument with a chiseled "X" in the top.
- 11-17-1980 James L. Will 5 x 5 Concrete Monument Found - Map #B1105
- 02-07-1990 James L. Will 5 x 5 Concrete Monument Found - Map #B7236
- 02-07-1990 James L. Will 5 x 5 Concrete Monument Found - Map #B2113
- 05-29-2013 I found and accepted a 5" X 5" square concrete monument with a chiseled "X" in the top and witnessed the monument as shown below.
- 05-29-2013 WISCRS (Oneida County):
N 218625.51 USft
E 321035.41 USft
Datum: NAD 1983 (2011)

(c)(d)(e) Plan view of corner with ties to at least 4 witness monuments. If in disagreement with previously established corner, show the distances between the two corners and also indicate the ties to the disputed corner.



(i) I, Jeffrey L. DeMuth, Registered Land Surveyor #S-2656, hereby certify that the corner location on this record was determined by me, or under my direction and control and that this U.S. Public Land Survey Monument Record is correct and complete to the best of my knowledge and belief.


 Signature _____ Date 07/18/2013



Index No. 523