



Stock No. 26273

U.S. PUBLIC LAND SURVEY MONUMENT RECORD

Index No. G-1

State of Wisconsin } ss.
County of Oneida

I, Kip W. Soder, do hereby certify that on the 24th day of April, 1990, I found evidence of the West One-Quarter corner of Section 7, Township 38 North, Range 11 East, Fourth Principal Meridian, as described hereon; and that from this evidence I established a new monument and accessories as described hereon to perpetuate the original location of this corner.

Resident witnesses:

Kip W. Soder

Robert Schneider

History of original corner establishment:

Corner was established by H.C. Fellows in July of 1859.

Made the following B.T.'s; 6" Hemlock S 25° W 8 lks. 7" Hemlock N 80° E 13 lks.

Description of corner evidence found:

Found 1" iron pipe in ditch of C.T.H. A as used and accepted as 1/4 corner.

Description of monument and accessories I established to perpetuate the original location of this corner.

Set 2 1/2" x 36" Aluminum Oneida County monument stamped to identify corner.

Set I.P. on E-W 1/4 line of Said Section 7 74.42 feet.

Set I.P. 45° off of E-W 1/4 line 36.95 feet

Set I.P. 225° off of E-W 1/4 line 121.98 feet

Set plastic Survey corner marker Northeast 0.75 feet

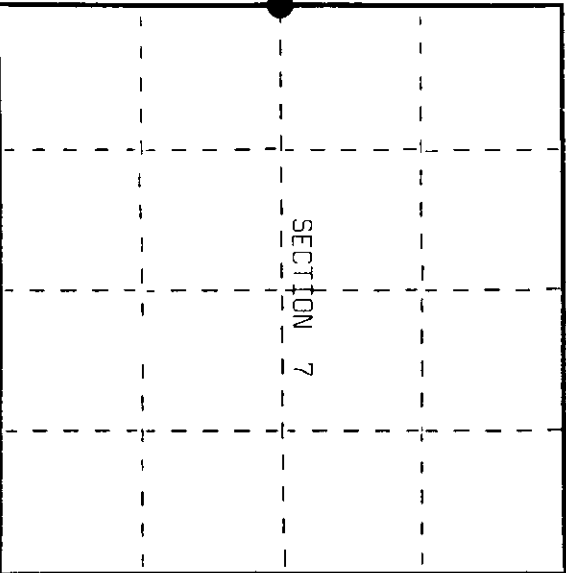
Dated at Three Lakes, Wis., this 25th day of April, 1990

Signature: *Kip W. Soder* Title: Land Surveyor Registration No. S-1731
(County Surveyor, Registered Land Surveyor, or other duly authorized official)

Office of Register of Deeds, County of Oneida, I hereby certify that the within instrument was filed in this office for record on the 25th day of April, 1990 at 10:00 o'clock A.M.

(Register of Deeds)

By: _____ Deputy



● = Corner monument restored.

REGISTER OF DEEDS OFFICE
ONEIDA COUNTY, WIS.
MAY 10 1990
THOMAS H. LEIGHTON
REGISTER OF DEEDS

3810122000

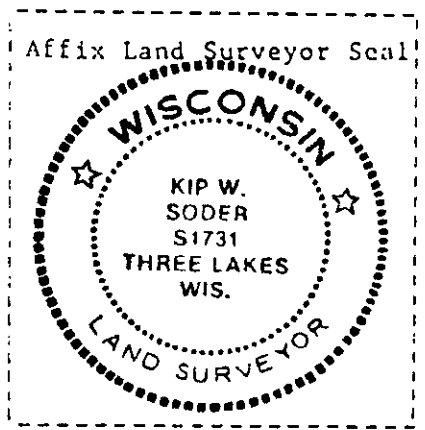
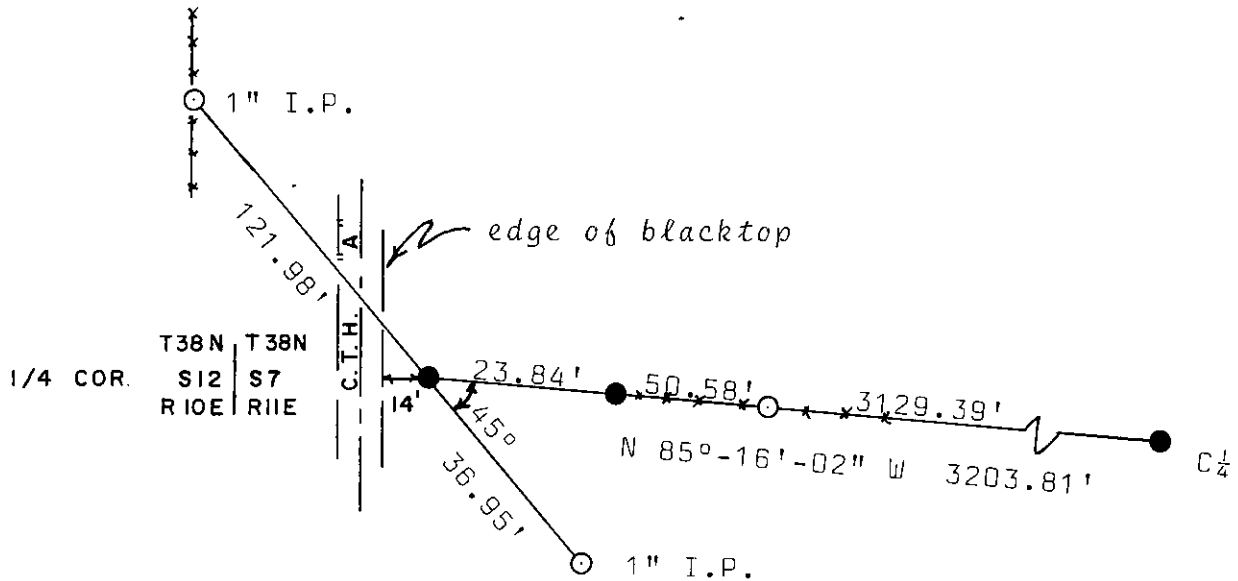
(d) Describe any material discrepancy between the location of the corner as restored or reestablished and the location of that corner as previously restored or reestablished by distance and direction. Show the discrepancy on the plan view drawing under (d), above. Show the distances between the corner as previously restored or reestablished and (1) the corner as restored or reestablished, and (2) to at least 2 of the witness monuments shown on the drawing in (d), above.

None

(f) Was the corner restored through acceptance of (1) an obliterated evidence location, or, (2) a found perpetuated location?

Corner was restored through a found perpetuated location.

(g&h) Was the corner reestablished through lost corner proportionate methods? If so, show the method, including the directions and distances to other public land survey corners used as evidence or used for proportioning in determining the corner location?



(i) I, Kip W. Soder R.L.S. 1731
 (type or print name) certify that the corner location shown on this record was determined by me or under my direction and control and that this U.S. Public Land Survey Monument Record is correct and complete to the best of my knowledge and belief

Kip W. Soder Signature April 26, 1990 Date