

This form is intended to fulfill the requirements of Chapter A-E 7.08 (3)(a) thru (l) U.S. Public Land Survey Monument Location Record, Wisconsin Administrative Code. Use the reverse side of form for continuation.

U.S. PUBLIC LAND SURVEY MONUMENT LOCATION RECORD

Recorders Data

USPLS CORNER: NORTH 1/4 SECTION: 24 TOWNSHIP: 38 NORTH RANGE: 10 EAST

NAME OF WATERWAY FOR M.C. CORNER : N/A SECTION LINE: N/A

(CITY)(VILLAGE)(TOWN) OF: THREE LAKES COUNTY OF: ONEIDA

Description of monument found or placed and all other evidence used as the basis for monument location; including monuments and related measurements required if the corner location was reestablished by lost corner proportionate methods. Also indicate name of original surveyor, original survey date and the corner monument, bearing trees, witness or other reference monuments established; including measured bearing and distance ties, from available records.

Found and accepted an undisturbed standard aluminum monument with stamped Oneida County cap 5" below west edge of existing gravel roadway surface; no other corner monumentation evidence observed nor detected with metal locator within roadway area.

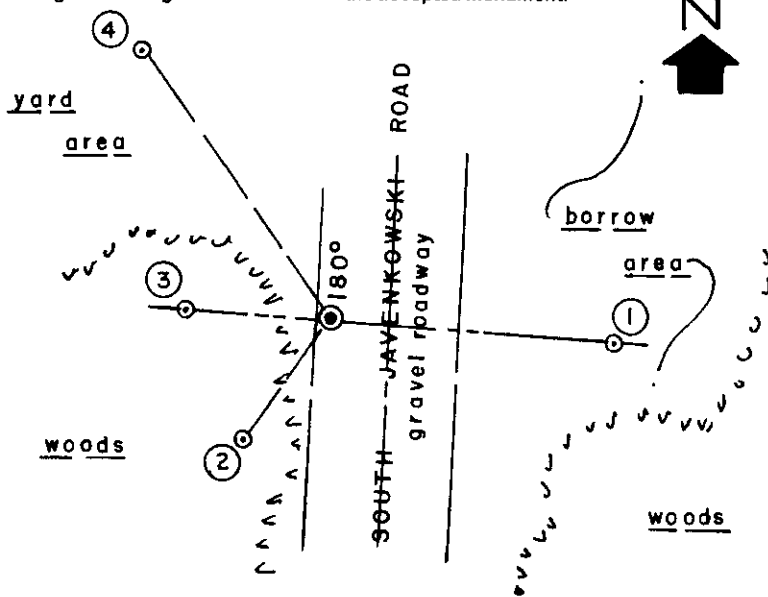
In September 1863, William E. Daugherty/GLO set a wood post as the original corner and marked two(2) OBTs: an 8" Tamarack N14°W 9 links and a 12" Pw S08°W 25 links, all of which are now obliterated.

In November 1980, James L. Will/RLS 1410, notes an Oneida County capped monument at this corner per Genisot & Associates, Inc. plat of survey filed as B-1105 in Oneida County survey records, and also noted BTs: a 6" Mr S14°W 34.30' now gone, a 30" Mr S57°E 62.22' found OK with face blaze above root crown, and an 18" Basswood N74°E 75.75', now gone or uncertain for recovery purposes.

In August 1990, Kip Soder/RLS 1731, notes an Oneida County aluminum monument at this corner per his plat of survey filed as B-2388 in Oneida County survey records; however, no ties were noted.

This recovery completed September 7, 1999; there were no direct witnesses other than vehicular drive-bys. I also found and flagged an old fence line into woods with ingrown wire in trees East of the corner, and an old fenceline leads West of the corner location.

Plan view map of monument location with bearing and distance ties to a minimum of four(4) described witness or reference monuments of concrete, natural stone, iron, live bearing trees or equivalent material. If applicable, also show a minimum of two(2) bearing and distance ties to any other monument found and not accepted; including the bearing and distance from the accepted monument.



WITNESS MONUMENT TIES:

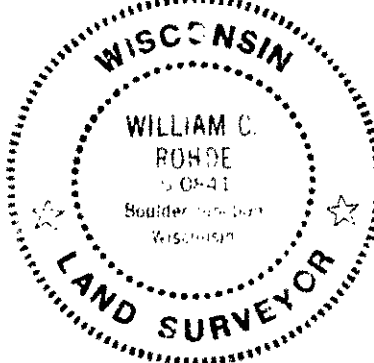
- ① 1/2" dia. by 36" long steel rebar set with uncapped top 1" above grade in a rocks cairn S85°E 44.40'.
- ② New BT 5" Bw S36°W 23.24'.
- ③ Older 3/4" dia. iron pipe found with uncapped top flush in a rocks cairn N85°W 22.26'.
- ④ New BT 10" Mr N35°W 50.92'; no PK nail with BT washer set in face at DBH.

I set a standard white poly 'T' marker post 6" West of Witness Monument 1. Corner is located SE of Residence at Fire No. 6381.

SCALE: 1" = 30'

Unless otherwise indicated, all bearing tree ties are to a .25" dia. by 2.5" long PK nail with a 1.25" dia. steel washer driven into unblazed right face and a .25" dia. by 2.5" long PK nail with a 2" dia. steel washer stamped BT is also driven into unblazed face of bearing tree at DBH; the basis for measured bearings is by compass to nearest degree and all tie distances are measured horizontal by steel tape corrected to nearest 1/100th feet at standard temperature of 68° F.

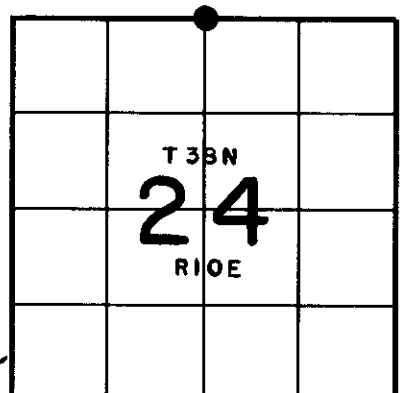
RLS SEAL:



LAND SURVEYOR CERTIFICATE:

I, William C. Rohde, hereby certify that I am duly licensed as a Professional Land Surveyor in the State of Wisconsin; that this USPLS monument location was determined by me and/or under my direct supervision and control; and that this U.S. Public Land Survey Monument Location Record is true and correct to the best of my knowledge and belief.

Signed: *William C. Rohde*
 William C. Rohde RLS 841



U.S. PUBLIC LAND SURVEY MONUMENT RECORD

Note: This form is intended and designed to fulfill all requirements of Wisconsin Administrative Code, Chapter A-E 7.08 U.S. Public Land Monument Record (3)(a)(b)(c)(d)(e)(f)(g)(h)(i). An additional sheet may be added if necessary to conform with said requirements. Deeds Square

(a) CORNER LOCATION: North 1/4
 _____ Corner of Section 24
 Township 38 North, Range 10 East
 Township/City Three Lakes
 County of Oneida



REGISTER OF DEEDS OFFICE
ONEIDA COUNTY
FILED

JAN 22 2021

KYLE J. FRANSON
REGISTER OF DEEDS

(b) HISTORY OF ORIGINAL ESTABLISHMENT
 Original Surveyor: William E. Daugherty
 Date of Survey: 1863
 Original B.T.'s: 8" Tamarack N14°W 9 lks.
12" W. Pine S8°W 25 lks.

The coordinate values shown have been determined by the average of multiple RTK GPS observations taken initially and returning to the site on a different day at a different time and taking additional multiple RTK GPS observations and averaging those with the initial observations.

County or State Plane Coordinates
 Northing 213352.932'
 Easting 321132.933'
 Datum Base WISCORS-ONEIDA GRID

NAD 83 (2011)

(b)(f)(g)(h) Description of monument found at this corner and if it was accepted, state all evidence (material, testimonial, occupational, plats, records, other monuments) used as a basis for accepting. If not accepted or if nothing was found, state evidence used as basis for establishing location. If reestablished through lost corner proportionate methods, indicate all monuments, distances and directions used to establish. Indicate type of monument and sign post found or set.

As part of an Oneida County Land Information Office contract to preserve Public Land Survey System corners in roadways that may be obliterated due to road resurfacing, I have performed the following corner maintenance as described below:

1980: James Will notes of an Oneida Co. aluminum cap monument on Genisot & Assoc. survey B1105 of the Oneida Co. records with the following B.T.'s: 30" R. Maple S57°E 62.22'

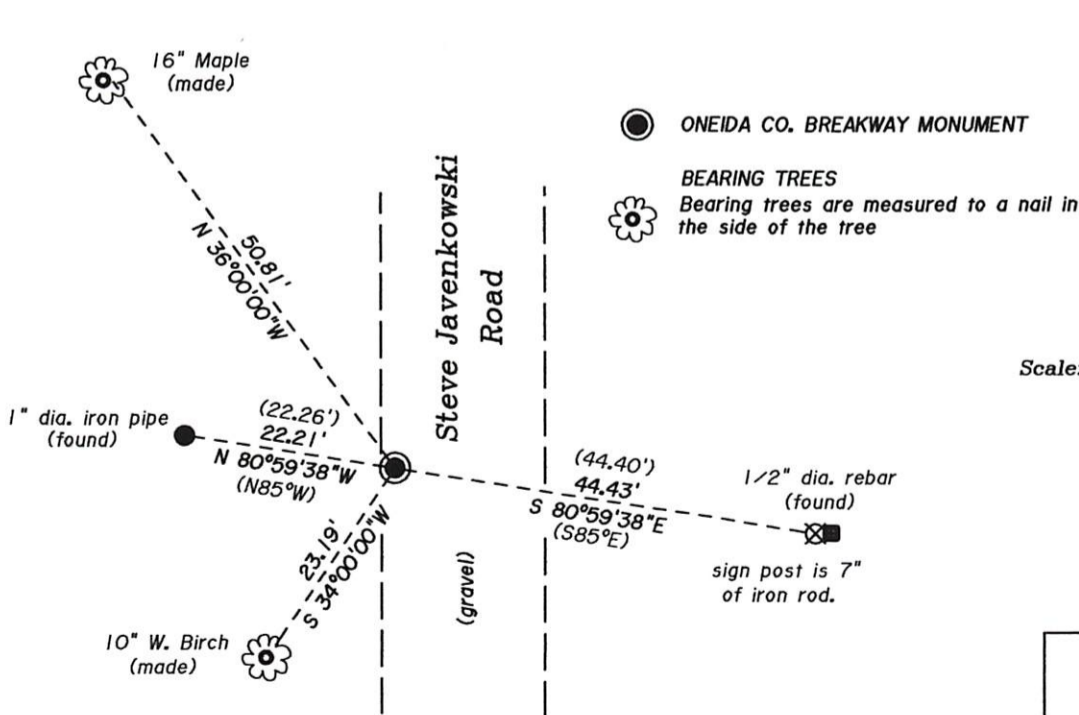
1990: Kip W. Soder shows Oneida Co. aluminum cap found in good condition per Survey Map B2388

1999: William Rhode finds a Oneida Co. aluminum cap monument with no existing references and makes the following ties for the corner.
 1/2" rebar S85°E 44.40' 3/4" iron pipe N85°W 22.26'
 5" R. Maple S36°W 23.24' 10" R. Maple N35°W 50.92'

June, 2019: Thomas Boettcher of Eagle Landmark Surveying finds an Oneida Co. aluminum breakway monument 8" below the surface on the west edge of the road in good condition with existing corner ties as shown below.

December 2020: Thomas Boettcher returns to the site and found the aluminum monument now 12" deep due to new road gravel being added but falling on the edge of the new road resurfacing. I took a series of RTK GPS observations to average with the previous observations and checked the witnesses to the corner.

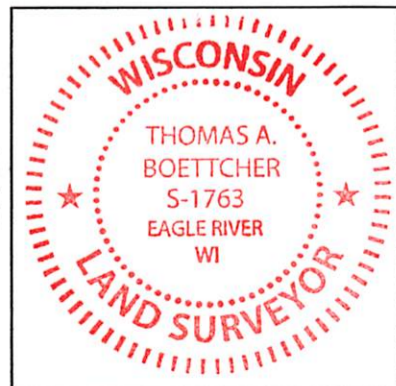
(c)(d)(e) Plan view of the corner with ties to at least 4 witness monuments. If in disagreement with previously established corner, show the distances between the two corners and also indicate the ties to the disputed.



(i) I, Thomas A. Boettcher P.L.S. No. 1763

hereby certify that the corner location on this record was determined by me or under my direction and control and that this U.S. Public Land Survey Monument Record is correct and complete to the best of my knowledge and belief.

Signature *Thomas A. Boettcher* Date December 23, 2020



Index No. 3810130020