

This form is intended to fulfill the requirements of Chapter A-E 7.08 (3)(a) thru (i) U.S. Public Land Survey Monument Location Record, Wisconsin Administrative Code. Use the reverse side of form for continuation.

U.S. PUBLIC LAND SURVEY MONUMENT LOCATION RECORD

Recorders Data

USPLS CORNER: NW SECTION SECTION: 24 TOWNSHIP: 38 NORTH RANGE: 10 EAST

NAME OF WATERWAY FOR M.C. CORNER: N/A SECTION LINE: N/A

(CITY)(VILLAGE)(TOWN) OF: THREE LAKES COUNTY OF: ONEIDA

Description of monument found or placed and all other evidence used as the basis for monument location; including monuments and related measurements required if the corner location was reestablished by lost corner proportionate methods. Also indicate name of original surveyor, original survey date and the corner monument, bearing trees, witness or other reference monuments established; including measured bearing and distance ties, from available records.

Found and accepted an undisturbed standard 2" dia. aluminum pipe monument with Oneida County cap, stamped by Robert Winat/RLS 1040 in 1980, 2" above grade at this corner location; also a yellow painted 1.25" dia. uncapped PVC pipe guard post 23" high and tipped 15°+/- SE 7" NW of the corner monument, which I left in place, and I set a standard white poly 'T' marker post N45°W 7".

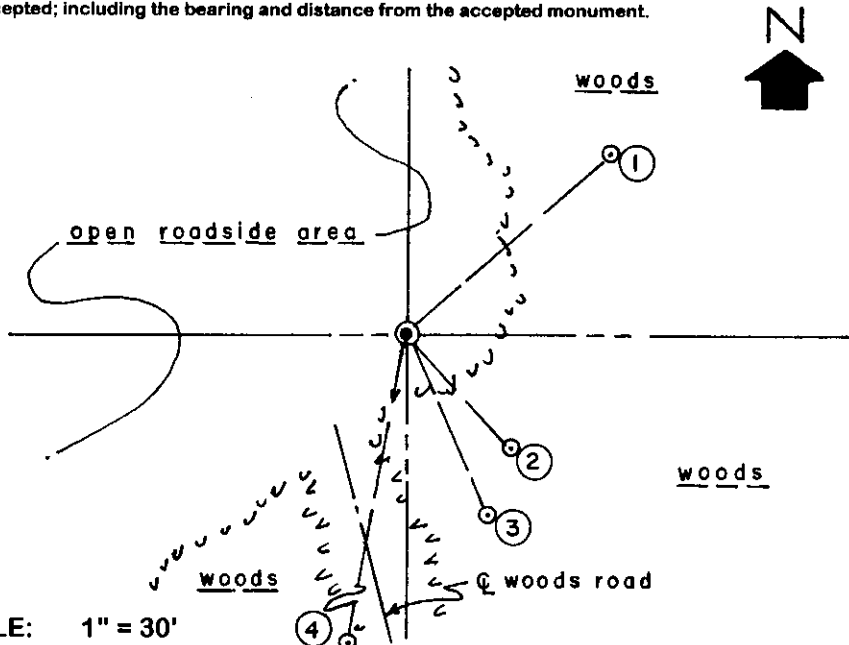
In September 1863, William E. Daugherty/GLO set a wood post as the original corner and marked two(2) OBTs: a 10" Sugar N39°W 12 links and an 8" Bw S55°E 17 links, all of which are now obliterated.

In November 1980, James L. Will/RLS 1410, notes an Oneida County monument at this corner per Genisot & Associates, Inc. plat of survey filed as B-1105 in Oneida County survey records, and new BTs: a 10" Bw S46°E 24.22 and a 12" Bw N48°E 46.24', both found OK and used for new ties below; and he also noted a power pole S47°W 190.10' and a power pole N07°E 144.51', also both found OK to confirm corner monument location but not used for new ties.

In December 1994, Kip Soder/RLS 1731, notes an Oneida County aluminum monument at this corner per legend on his plat of survey filed as B-3078 in Oneida County survey records.

This recovery completed September 8, 1999; there were no direct witnesses other than vehicular drive-bys. I painted old BT blazes blaze orange.

Plan view map of monument location with bearing and distance ties to a minimum of four(4) described witness or reference monuments of concrete, natural stone, iron, live bearing trees or equivalent material. If applicable, also show a minimum of two(2) bearing and distance ties to any other monument found and not accepted; including the bearing and distance from the accepted monument.



WITNESS MONUMENT TIES:

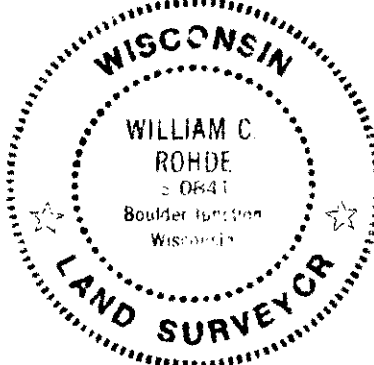
- ① Old BT 9" Bw N48°E 42.41' with upper & lower face blazes open.
- ② Old BT 9" Bw S43°E 24.37' with upper & lower face blazes shut but plain.
- ③ New BT 9" Fir S24°E 31.02' to PK nail & washer in left face.
- ④ New BT 9" Mr S10°W 53.84'.

Corner falls near wooded edge of cleared roadside area S45°E 86' from southeasterly edge of Country Trunk Highway 'A' blacktop pavement mat, running Northeasterly along a curve.

SCALE: 1" = 30'

Unless otherwise indicated, all bearing tree ties are to a .25" dia. by 2.5" long PK nail with a 1.25" dia. steel washer driven into unblazed right face and a .25" dia. by 2.5" long PK nail with a 2" dia. steel washer stamped BT is also driven into unblazed face of bearing tree at DBH; the basis for measured bearings is by compass to nearest degree and all tie distances are measured horizontal by steel tape corrected to nearest 1/100th feet at standard temperature of 68° F.

RLS SEAL:



LAND SURVEYOR CERTIFICATE:

I, William C. Rohde, hereby certify that I am duly licensed as a Professional Land Surveyor in the State of Wisconsin; that this USPLS monument location was determined by me and/or under my direct supervision and control; and that this U.S. Public Land Survey Monument Location Record is true and correct to the best of my knowledge and belief.

Signed *William C. Rohde*
 William C. Rohde RLS 841

| | | | |
|--|--|-----------|--|
| | | | |
| | | T 38N | |
| | | 24 | |
| | | R 10E | |
| | | | |