

This form is intended to fulfill the requirements of Chapter A-E 7.08 (3)(a) thru (i) U.S. Public Land Survey Monument Location Record, Wisconsin Administrative Code. Use the reverse side of form for continuation.

**U.S. PUBLIC LAND SURVEY MONUMENT LOCATION RECORD**

Recorders Data

USPLS CORNER: NW SECTION SECTION: 23 TOWNSHIP: 38 NORTH RANGE: 10 EAST

NAME OF WATERWAY FOR M.C. CORNER: N/A SECTION LINE: N/A

(CITY)(VILLAGE)(TOWN) OF: THREE LAKES COUNTY OF: ONEIDA

Description of monument found or placed and all other evidence used as the basis for monument location; including monuments and related measurements required if the corner location was reestablished by lost corner proportionate methods. Also indicate name of original surveyor, original survey date and the corner monument, bearing trees, witness or other reference monuments established; including measured bearing and distance ties, from available records.

Found and accepted a small PK nail in existing blacktop paverment at this corner location per record data, which I pulled and reset with a 7/16" dia. by 8" long galvanized spike flush with pavement surface.

In September 1863, William E. Daugherty/GLO set a wood post as the original corner and marked OBTs: an 8" Aspen S16°E 8 links and an 8" Py N65°W 27 links, all of which are now obliterated within roadway area.

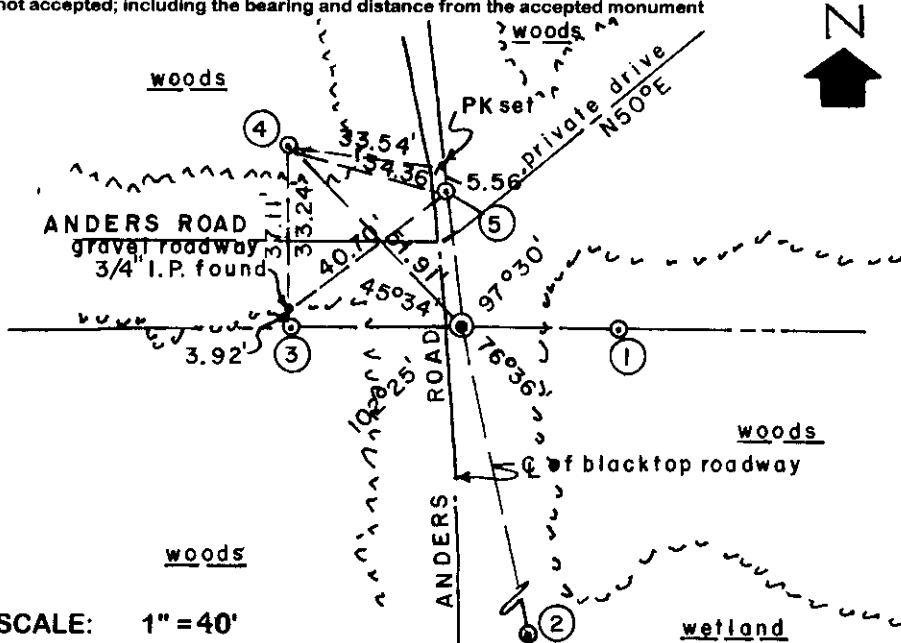
In July 1975, Robert Winat/RLS 1040, referenced his plat of survey filed as B-2832 in Oneida County survey records, by subsequent verification herein, to this corner location at which he did not define monumentation nor any witness ties.

In December 1993, Kip Soder/RLS 1731, referenced his plat of survey filed as B-2897 in Oneida County survey records, by the same bearing and distance references indicated by Winat on his plat of survey noted above.

In December 1994, Kip Soder/RLS1731, referenced his plat of survey filed as B-3078 in Oneida County survey records, again by the bearing and distance references along the west line of the section per the above plats of survey, but by plat legend in this instance, Soder denotes this corner location as a "PK nail found in this survey"; and which he also similarly noted by legend on his plat of survey filed as B-3743 dated July 1997 in Oneida County survey records.

This recovery completed September 9, 1999 and was directly witnessed by Clayton Smith, adjoining owner at Fire No. 2496, who had previously witnessed this corner location as being the NW corner of said Section 23, and his SW corner.

Plan view map of monument location with bearing and distance ties to a minimum of four(4) described witness or reference monuments of concrete, natural stone, iron, live bearing trees or equivalent material. If applicable, also show a minimum of two(2) bearing and distance ties to any other monument found and not accepted; including the bearing and distance from the accepted monument



**WITNESS MONUMENT TIES:**

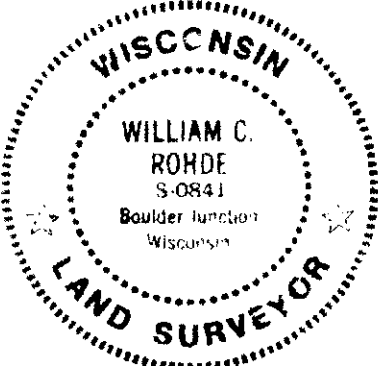
- ① 3/4" dia. iron pipe found 4" up at S89°08'48"E 33.57'.
- ② 3/4" dia. iron pipe found 2" up at S12°32'48"E 110.48'.
- ③ 1" dia. iron pipe found 4" up at S89°52'12"W 35.40'.
- ④ 3/4" dia. iron pipe found 5" up at N44°33'48"W 51.91'.
- ⑤ 1.5" steel shaft found 1" below black top at N06°38'48"W 28.16'.

Standard white poly 'T' marker post set 13.5' East of corner. All bearings related by measured transit angles.

SCALE: 1" = 40'

Unless otherwise indicated, all bearing tree ties are to a .25" dia. by 2.5" long PK nail with a 1.25" dia. steel washer driven into unblazed right face and a .25" dia. by 2.5" long PK nail with a 2" dia. steel washer stamped BT is also driven into unblazed face of bearing tree at DBH; the basis for measured bearings is by compass to nearest degree and all tie distances are measured horizontal by steel tape corrected to nearest 1/100th feet at standard temperature of 68° F.

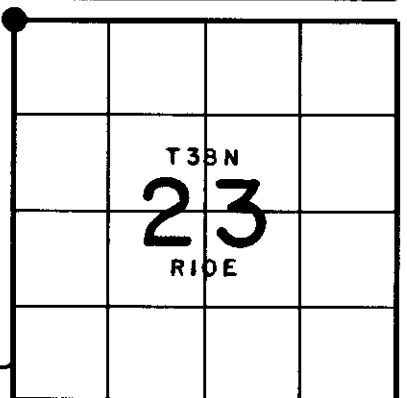
RLS SEAL:



**LAND SURVEYOR CERTIFICATE:**

I, William C. Rohde, hereby certify that I am duly licensed as a Professional Land Surveyor in the State of Wisconsin; that this USPLS monument location was determined by me and/or under my direct supervision and control; and that this U.S. Public Land Survey Monument Location Record is true and correct to the best of my knowledge and belief.

Signed: *William C. Rohde*  
William C. Rohde RLS 841



# U.S. PUBLIC LAND SURVEY MONUMENT RECORD

Note: This form is intended and designed to fulfill all requirements of Wisconsin Administrative Code, Chapter A-E 7.08 U.S. Public Land Monument Record (3)(a)(b)(c)(d)(e)(f)(g)(h)(i). An additional sheet may be added if necessary to conform with said requirements. Deeds Square

(a) CORNER LOCATION: Northwest  
 Section 23 Corner of Section 23  
 Township 38 North, Range 10 East  
 Township/City Three Lakes  
 County of Oneida



REGISTER OF DEEDS OFFICE  
ONEIDA COUNTY  
FILED

JAN 22 2021

KYLE J. FRANSON  
REGISTER OF DEEDS

(b) HISTORY OF ORIGINAL ESTABLISHMENT  
 Original Surveyor: William E. Daugherty  
 Date of Survey: 1863  
 Original B.T.'s: 8" Aspen S16°E 8 lks.  
8" Y. Pine N65°W 27 lks.

The coordinate values shown have been determined by the average of multiple RTK GPS observations taken initially and returning to the site on a different day at a different time and taking additional multiple RTK GPS observations and averaging those with the initial observations.

County or State Plane Coordinates  
 Northing 213719.557'  
 Easting 312768.963'  
 Datum Base WISCORS-ONEIDA GRID

NAD 83 (2011)

(b)(f)(g)(h) Description of monument found at this corner and if it was accepted, state all evidence (material, testimonial, occupational, plats, records, other monuments) used as a basis for accepting. If not accepted or if nothing was found, state evidence used as basis for establishing location. If reestablished through lost corner proportionate methods, indicate all monuments, distances and directions used to establish. Indicate type of monument and sign post found or set.

*As part of an Oneida County Land Information Office contract to preserve Public Land Survey System corners in roadways that may be obliterated due to road resurfacing, I have performed the following corner maintenance as described below:*

*July 1975: Robert Winat refers to the corner location on his survey map as filed as B2832 of the Oneida Co. Survey records.*

*December, 1994 & July, 1997: Kip W. Soder refers to this corner as a P.K. nail found in place as shown on Survey Map No.'s B3078 and B3743 of the Oneida Co. Survey records as this location checks with the corner referred to in the 1975 Winat survey.*

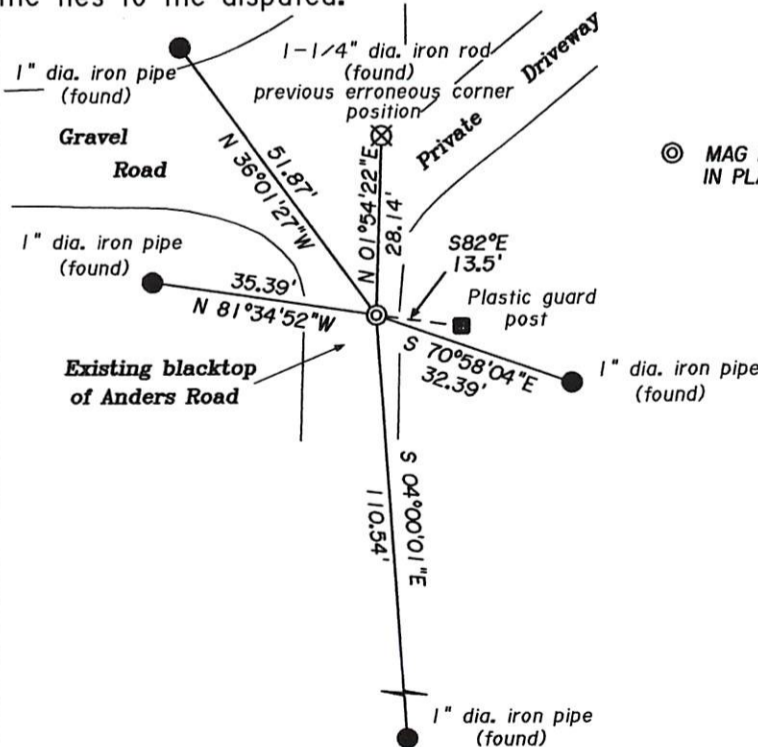
*September, 1999: William Rhode verifies this corner location through testimony of Clayton Smith the adjoining land owner to the east and prepares a U.S. Public Land Monument Location Record with corner history and ties.*

*June, 2019: Thomas Boettcher of Eagle landmark Surveying finds a 1.2" dia. spike in the pavement of Anders Road and verifies it's location through corner ties as shown below.*

*December 2019: Thomas Boettcher and Kip Soder returned to the site and set a magnetic P.K. nail in the new road surface after resurfacing the past summer from the witness monument ties in June.*

*December, 2020: I, Thomas Boettcher, returned to the site and found the Mag nail in the new road surface appearing to be disturbed. We set up on the witness monument and adjusted the mag nail slightly to check with the witnesses. I took a series of RTK GPS observations to average with the observations taken previously.*

(c)(d)(e) Plan view of the corner with ties to at least 4 witness monuments. If in disagreement with previously established corner, show the distances between the two corners and also indicate the ties to the disputed.

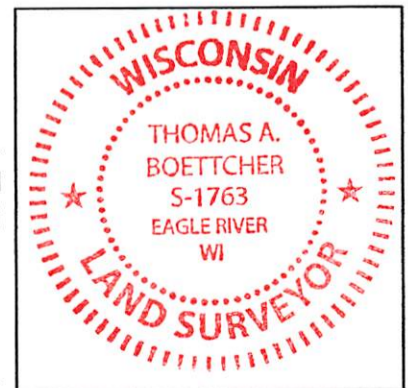


© MAG NAIL SET IN PAVEMENT FROM TIES  
IN PLACE OF FORMER 1/2" DIA. FOUND SPIKE  
Scale: 1" = 30'



(i) I, Thomas A. Boettcher P.L.S. No. 1763  
 hereby certify that the corner location on this record was determined by me or under my direction and control and that this U.S. Public Land Survey Monument Record is correct and complete to the best of my knowledge and belief.

Signature [Handwritten Signature] Date December 24, 2020



Index No. 38/0/50000