

to existing B.T.'s

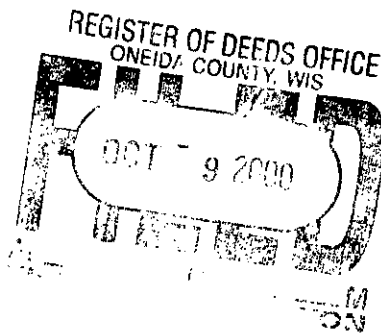
Hemlock 6" S 78½° W 21½
Hemlock 8" S 27° E 18 ¾

1958 - Loftus (Map #L1369) uses Vaughn's and Dorr's wood post.

1958 - RIPC0 replaces wood post with a 2½" iron pipe-brass plate monument.

1994 - Soder uses RIPC0 monument as S½ Cor of Sec 15.

2000 - Recovered RIPC0 2½" iron pipe - brass plate monument and B.T. Made new B.T.'s and set plastic sign post 1.0 North of monumnet.



Oneida County
Land Information Office
Filed
1/13/2026

U.S. PUBLIC LAND SURVEY MONUMENT RECORD

NOTE: This form is intended and designed to fulfill all requirements of Wisconsin Administrative Code, Chapter A-E 7.08 U.S. Public Land Survey Monument Record (3) (a-i)

A-E 7.08(3)(a) Identity of corner:
South 1/4 Corner Section 15,
Township 38 North, Range 10 East
of the Fourth Principal Meridian,
Town of Three Lakes, Oneida County,
Wisconsin

WISCRS - ONEIDA COUNTY
N: 213,774.539 USft (XXX,XXX.XXX)
E: 310,351.724 USft (XXX,XXX.XXX)
Datum: NAD83 (2011)
GNSS Method RTN
GNSS Control WISCRS VRS

The coordinate value shown has been verified by the average of two or more GPS observations at a markedly different time. Coordinates shown in parenthesis are previously published values.

A-E 7.08(3)(b)

Original Surveyor: William E. Daugherty - September 7, 1863 to September 13, 1863
Corner not set. According to notes corner was in the lake.

See previous U.S. Public Land Survey Monument Record - N-15 - July 26, 2000 - Surveyor 2458 - Dana J. Boulden - THENCE:

- March 10, 2023 - Surveyor 1763 - Thomas A. Boettcher - indicates this position as "2" iron pipe with stamped brass plate found in place" on county record Map #B8442.

December 11, 2025 - I found a 2.4 diameter iron pipe monument with a 4" square plate stamped to identify the corner location affixed to the top. The monument is on high land, ±25' west of swamp edge, and extends ±24" above grade. I also found 4 of Boulden's bearing trees alive and in good condition. I established 2 new reference monuments as shown below.

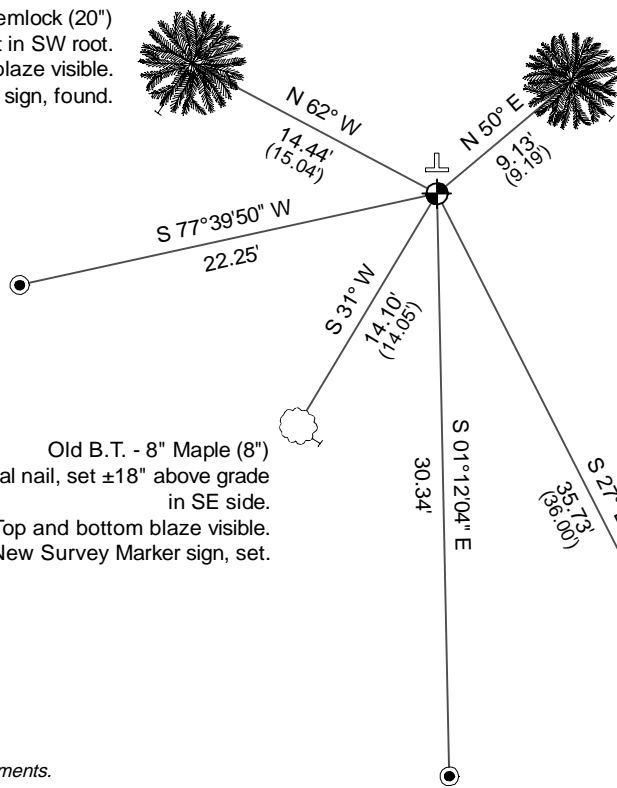
A-E 7.08(3)(c)(d) Plan view of corner with references to at least 4 witness monuments.

Old B.T. - 20" Hemlock (20")
Horizontal nail, set ±36" above grade in SE side.
Top and bottom blaze visible.
New Survey Marker sign, set.

Old B.T. - 22" Hemlock (20")
Vertical nail, set in SW root.
Top and bottom blaze visible.
Old W.C.D sign, found.

Old B.T. - 8" Maple (8")
Horizontal nail, set ±18" above grade in SE side.
Top and bottom blaze visible.
New Survey Marker sign, set.

Old B.T. - 9" Maple (6")
Horizontal nail, set ±48" above grade in NE side.
Top and bottom blaze visible.
New Survey Marker sign, set.



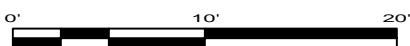
Bearings listed to the nearest second are referenced to the: Wisconsin Coordinate Reference System, Oneida County Zone. All other bearings are magnetic.



LEGEND

Monument sizes = outside diameter measurements.

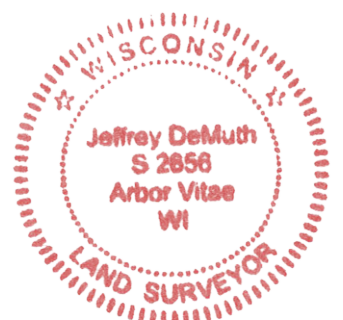
- This Corner
- Vinyl T-post, found ±1.0 feet north of corner
- 1.25" diameter x 18" long iron pipe, set
- Galvanized nail, set or nail found as shown



A-E 7.08(3)(e) 1863 Surveyor set a post, 2000 Surveyor found RIPCO 2 1/2" iron pipe - brass plate monument, 2023 Surveyor found similar, as did I in 2025.

A-E 7.08(3)(f) I accept this monument in good faith as a FOUND PERPETUATED LOCATION of the corner.
A-E 7.08(3)(g)(h) This corner was not determined through lost-corner-proportionate methods.

A-E 7.08(3)(i) I, Jeffrey L. DeMuth, Professional Land Surveyor No. S-2656, hereby certify that the corner location on this record was determined by me or under my direction and control, and that this U.S. Public Land Survey Monument Record is correct and complete to the best of my knowledge, and belief.



SIGNATURE

December 15, 2025

DATE

43810150020