

This form is intended to fulfill the requirements of Chapter A-E 7.08 (3)(a) thru (i) U.S. Public Land Survey Monument Location Record, Wisconsin Administrative Code. Use the reverse side of form for continuation.

**U.S. PUBLIC LAND SURVEY MONUMENT LOCATION RECORD**

Recorders Data

USPLS CORNER: SOUTH WIT MC SECTION: 14 TOWNSHIP: 38 NORTH RANGE: 10 EAST  
 NAME OF WATERWAY FOR M.C. CORNER: THUNDER LAKE SECTION LINE: WEST  
 (CITY)(VILLAGE)(TOWN) OF: THREE LAKES COUNTY OF: ONEIDA

Description of monument found or placed and all other evidence used as the basis for monument location; including monuments and related measurements required if the corner location was reestablished by lost corner proportionate methods. Also indicate name of original surveyor, original survey date and the corner monument, bearing trees, witness or other reference monuments established; including measured bearing and distance ties, from available records.

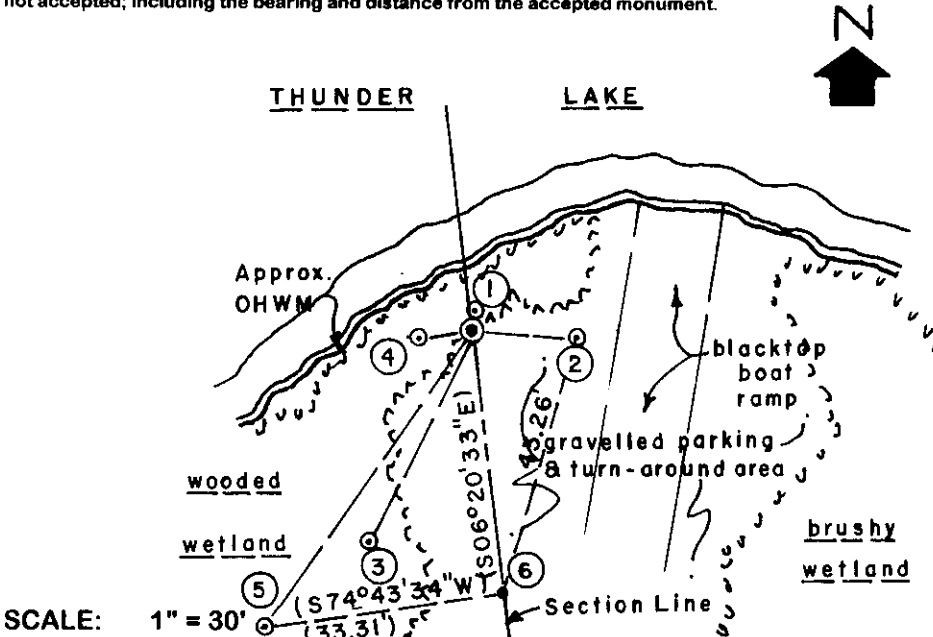
I could not find 1" iron pipe noted as a witness MC per plat of survey by Kip Soder/RLS 1731 filed as B-3743 in Oneida County survey records and dated July 1997. However, I did find an old 1.25" dia. galvanized iron pipe well point with uncapped top 15" above grade at the NE corner of Lot 1 of said plat of survey B-3743, which I verified with Kip Soder by phone call; therefore, I reestablished the section line therefrom by record bearing and distance offset and south to the SW section corner I had also recovered this date, and set a 1/2" dia. by 36" long steel rebar with a 1" dia. by 24" long iron pipe driven over it at top 2" above grade, as a new witness MC, on an extension of the section line toward the south shore of Thunder Lake.

In September 1863, William E. Daugherty/GLO set a wood post as the original corner 3.61 chains North of the SW corner of said Section 14, and marked OBTs: a 10" Bw N31°W 34 links and a 10" Hemlock S84°E 24 links, all of which are now obliterated.

This recovery completed September 9, 1999; there were no direct witnesses. I set a standard white poly 'T' marker post 4" South of the new witness MC monument, which falls about 4 feet North of the northerly edge of a gravelled roadway turn-around and parking area for an existing black-topped boat landing ramp about 30 feet East.

I have contacted Robert Schmalzer, RLS 1760, and requested information regarding his previous adjoining survey work, as his iron shafts set near this Wit MC and 28' North of the SW corner of Section 14 are considered erroneous.

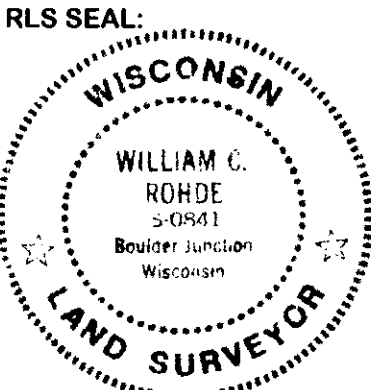
Plan view map of monument location with bearing and distance ties to a minimum of four(4) described witness or reference monuments of concrete, natural stone, iron, live bearing trees or equivalent material. If applicable, also show a minimum of two(2) bearing and distance ties to any other monument found and not accepted; including the bearing and distance from the accepted monument.



- WITNESS MONUMENT TIES:**
- ① Old 9" Bw BT with face blaze open N10°E 2.90'; no record.
  - ② 3/4" dia. steel shaft found with an RLS 1760 cap 2" below grade S89°E 16.20'; did not accept as a Wit MC as obviously erroneous.
  - ③ New BT 8" Bw S26°W 37.07'.
  - ④ New BT 9" Bw S82°W 8.81'.
  - ⑤ 1.25" dia. iron pipe well point found 15" up S34°W 57.70'; is also S74°30'W 33.31' from Wit. Mon. 6.
  - ⑥ 7/16" dia. by 8" spike set S06°E 42.12' at Wit MC per Soder survey.

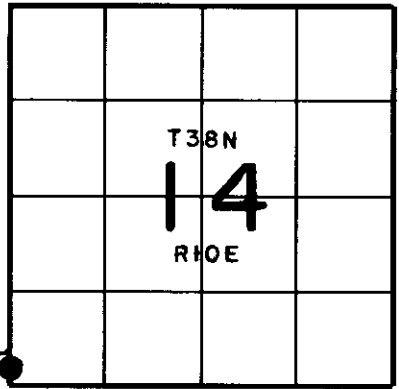
SCALE: 1" = 30'

Unless otherwise indicated, all bearing tree ties are to a .25" dia. by 2.5" long PK nail with a 1.25" dia. steel washer driven into unblazed right face and a .25" dia. by 2.5" long PK nail with a 2" dia. steel washer stamped BT is also driven into unblazed face of bearing tree at DBH; the basis for measured bearings is by compass to nearest degree and all tie distances are measured horizontal by steel tape corrected to nearest 1/100th feet at standard temperature of 68° F.



**LAND SURVEYOR CERTIFICATE:**  
 I, William C. Rohde, hereby certify that I am duly licensed as a Professional Land Surveyor in the State of Wisconsin; that this USPLS monument location was determined by me and/or under my direct supervision and control; and that this U.S. Public Land Survey Monument Location Record is true and correct to the best of my knowledge and belief.

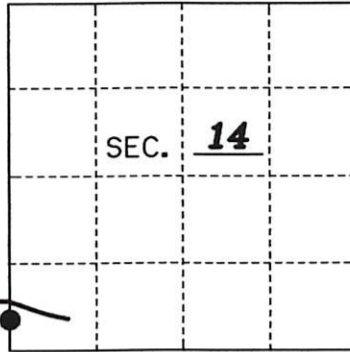
Signed: *William C. Rohde*  
 William C. Rohde RLS 841



# U.S. PUBLIC LAND SURVEY MONUMENT RECORD

Note: This form is intended and designed to fulfill all requirements of Wisconsin Administrative Code, Chapter A-E 7.08 U.S. Public Land Monument Record (3)(a)(b)(c)(d)(e)(f)(g)(h)(i). An additional sheet may be added if necessary to conform with said requirements. [Deeds Square

(a) CORNER LOCATION: South W.C.  
Meander Corner Corner of Section 14  
 Township 38 North, Range 10 East  
 Township/City Three Lakes  
 County of Oneida



REGISTER OF DEEDS OFFICE  
 ONEIDA COUNTY  
 FILED

JAN 22 2021

KYLE J. FRANSON  
 REGISTER OF DEEDS

(b) HISTORY OF ORIGINAL ESTABLISHMENT  
 Original Surveyor: William E. Daugherty  
 Date of Survey: 1863  
 Original B.T.'s: 10" W. Birch N31°W 34 lks.  
10" Hemlock S84°E 24 lks.

The coordinate values shown have been determined by the average of multiple RTK GPS observations taken initially and returning to the site on a different day at a different time and taking additional multiple RTK GPS observations and averaging those with the initial observations.

County or State Plane Coordinates  
 Northing 214148.238'  
 Easting 312741.275'  
 Datum Base WISCORS-ONEIDA GRID

NAD 83 (2011)

(b)(f)(g)(h) Description of monument found at this corner and if it was accepted, state all evidence (material, testimonial, occupational, plats, records, other monuments) used as a basis for accepting. If not accepted or if nothing was found, state evidence used as basis for establishing location. If reestablished through lost corner proportionate methods, indicate all monuments, distances and directions used to establish. Indicate type of monument and sign post found or set.

As part of an Oneida County Land Information Office contract to preserve Public Land Survey System corners in roadways that may be obliterated due to road resurfacing, I have performed the following corner maintenance as described below:

2000: William Rhode establishes the corner position for the W.C.M.C. by using a survey of Lot 1 of Gwidt's Plat and sets a 1/2" dia. rebar with a 1" dia. iron pipe driven over it and extending 2" above ground with the following references:

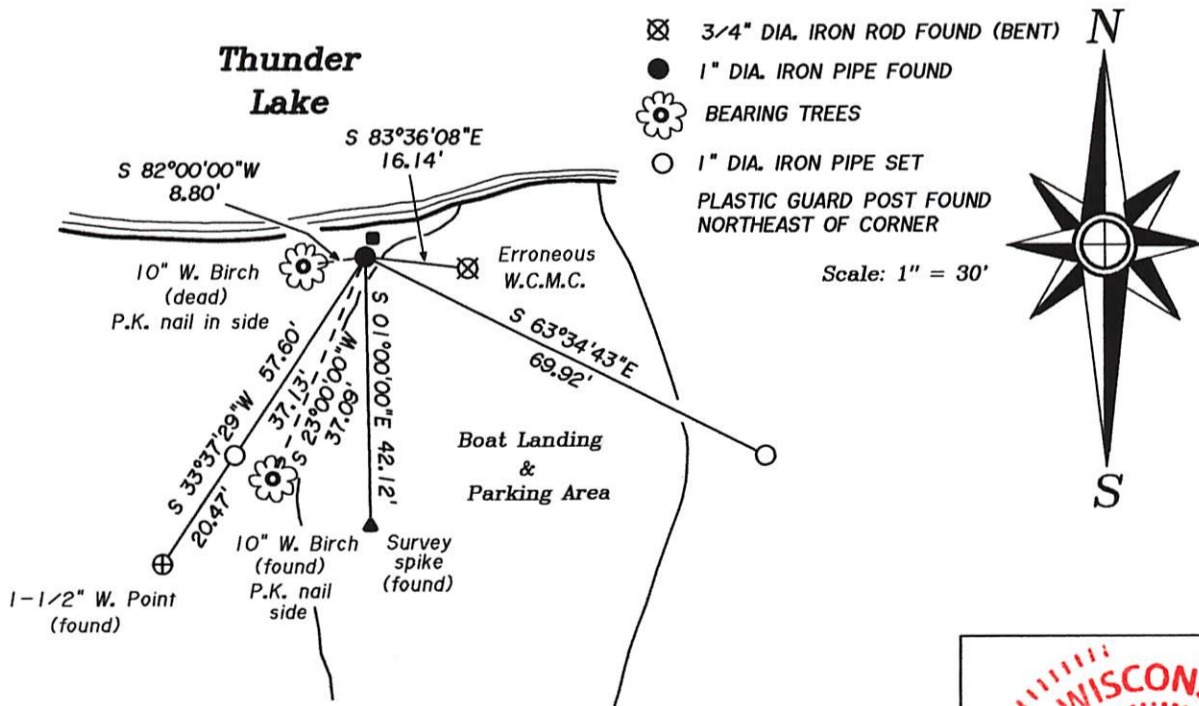
Found the following: 9" W. Birch N10°E 2.90' 3/4" steel shaft S89°E 16.20' 1-1/4" well point S34°W 57.70'  
 Spike nail S6°E 42.12'

Made the following: 8" W. Birch S26°W 37.07' 9" W. Birch S82°W 8.81'

6-03-2019: Thomas Boettcher of Eagle Landmark Surveying find the W.C.M.C. in good condition with the following references as shown below:

December 2020: I, Thomas Boettcher, returned to the site and found the 1" iron pipe in place. I took a series of RTK GPS observations to average with the former observations. I also checked the witnesses to the corner as shown below.

(c)(d)(e) Plan view of the corner with ties to at least 4 witness monuments. If in disagreement with previously established corner, show the distances between the two corners and also indicate the ties to the disputed.



- ☒ 3/4" DIA. IRON ROD FOUND (BENT)
- 1" DIA. IRON PIPE FOUND
- 🌸 BEARING TREES
- 1" DIA. IRON PIPE SET
- PLASTIC GUARD POST FOUND NORTHEAST OF CORNER

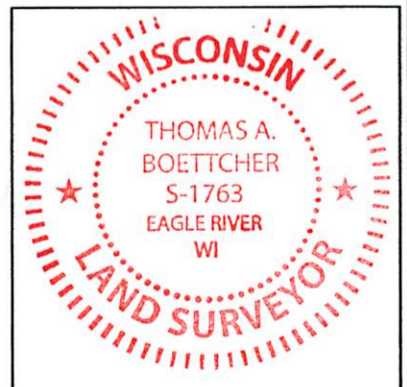
Scale: 1" = 30'



(i) I, Thomas A. Boettcher P.L.S. No. 1763

hereby certify that the corner location on this record was determined by me or under my direction and control and that this U.S. Public Land Survey Monument Record is correct and complete to the best of my knowledge and belief.

Signature [Signature] Date December 23, 2020



Index No. 3810150100