

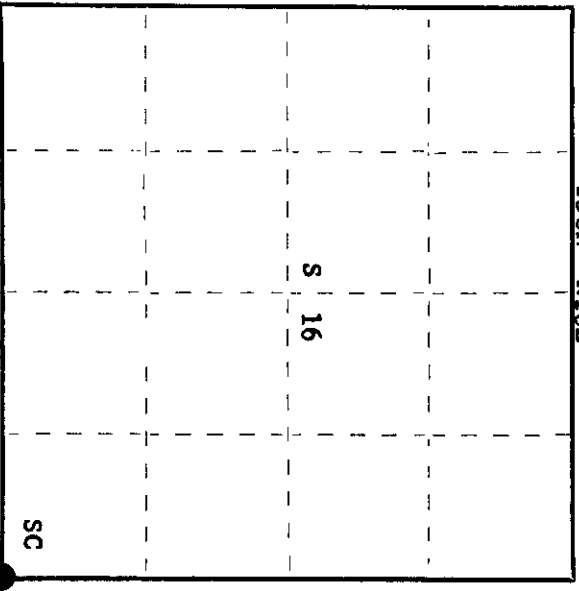
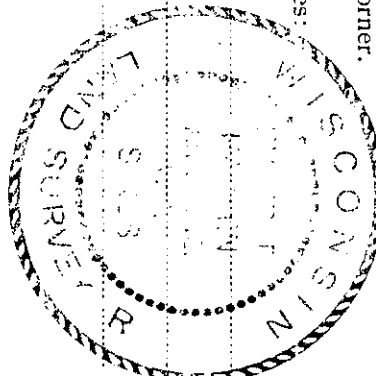
CERTIFIED LAND CORNER RESTORATION

Index No. N-13

State of Wisconsin } ss.
 County of Oneida

I Phillip T. Hansen, do hereby certify that on the 30th day of January, 1978, I found evidence of the Section corner of 15, 16, 21, 22 Township 38 North, Range 10 East, Fourth Principal Meridian, as described hereon; and that from this evidence I established a new monument and accessories as described hereon to perpetuate the original location of this corner.

Resident witnesses:
Jim Claflin
Herb Wagoner



○ = Corner monument restored.

History of original corner establishment: Original corner established by Wm. E. Dougherty, Deputy Surveyor, in 1863, from which hemlock 10" bears S31°E, 65 links and hemlock 10" bears N84°W, 29 links.
 Corner restored by B.F. Dorr in 1904. Marked NBT's - Hemlock 20" bears N 20½°E 10½ links; cedar 12" bears S14½°W, 23 links.
 Corner restored by D.H. Vaughan in 1916. Marked Yellow Birch 16" N23½°W, 55 links and Hemlock 9" S17½°E, 66 links.
 N. Loftus, Ripco Surveyor, recovered and used this corner to run surveys in section 16, but no records made of what he recovered. Set iron pipe.

Description of corner evidence found:
 Recovered 2" iron pipe with 4" brass cap in bad condition, badly bent.
 Corner sets in the road bed of old highway A.
 Recovered old W.C.D. tag on yellow birch stump 30" due south, our distance 69.4 links.
 Stump of sugar 6" N16°W, 191.2 links, scribed T38N R10E S15 BT.

Description of monument and accessories I established to perpetuate the original location of this corner.
 Replaced Ripco's iron post with 2½" A-1 Berntsen Monument (O.C.) and drove 1" iron pipe beside it. Iron pipe projects 3 ft., monument is flush with ground. Cap stamped:
 Marked NBT's - Hemlock 12" S46°E, 176.3 links, scribed SC BT.
 Sugar 12" S2°W, 93.6 links
 NBO's - Power pole 3810 16R20 62.0 lks.
 Iron pipe 1" S72°W 62.0 lks., projects 2 ft.

S498
 T38N
 16+15
 21+22
 R10E
 1978

Dated at Rhinelander, Wis., this 3rd day of February, 1978.
 Signature Phillip T. Hansen Title Registered Land Surveyor Registration No. S-498
 (County Surveyor, Registered Land Surveyor, or other duly authorized official)
 Office of Register of Deeds, County of Oneida.
 Instrument was filed in this office for record on the 6th day of February, 1978 at 9:30 o'clock A. M. I hereby certify that the within

Donna Leanne Kuehn
 (Register of Deeds)

By: _____ Deputy

381016000

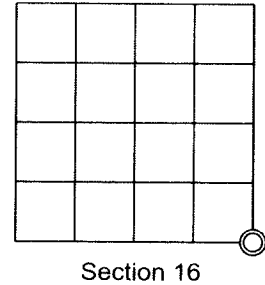
U.S. PUBLIC LAND SURVEY MONUMENT RECORD

Note: This form is intended and designed to fulfill all requirements of Wisconsin Administrative Code, Chapter A-E 7.08 U.S. Public Land Survey Monument Record (3)(a)(b)(c)(d)(e)(f)(g)(h)(i). An additional sheet may be added to if necessary to conform with said requirements.

(a) Corner Location:
 Southeast Corner,
 Section 16,
 Township 38 North,
 Range 10 East,
 Town of Sugar Camp,
 Oneida County,
 Wisconsin

June 2, 2017 Observation - MSA
 Oneida County Aluminum Monument
 N 213851.837
 E 307941.75
 Oneida County Coordinate System NAD83(91)

November, 2000 Observation - Aero-Metric
 2" Iron Pipe
 N 213,851.79
 E 307,941.76
 Oneida County Coordinate System NAD83(91)



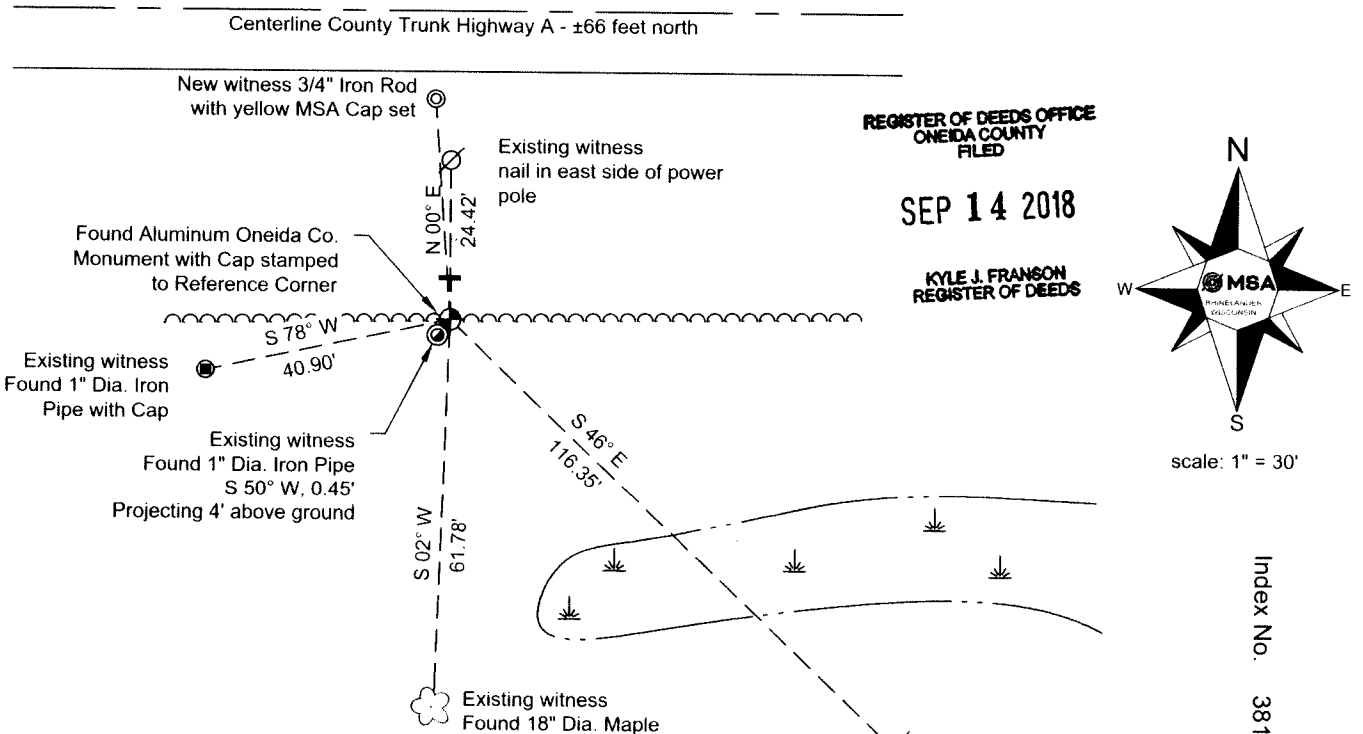
(b)(f)(g)(h) Description of monument found at this corner and if it was accepted, state all evidence (material, testimonial, occupational, plats, records, other monuments) used as a basis for accepting. If not accepted or if nothing was found, state evidence used as basis for establishing location. If reestablishment through lost corner proportionate methods, indicate all monuments, distances and directions used to establish. Indicate type of monument found or set and sign post.

1863 - William Dougherty established corner, Hemlock 10" S31E 65 links, Hemlock 10" N84W n9 29 links.
 1904 - B.F. Dorr restored corner marked NBT's - Hemlock 20" N23 1/2° E, 10.5 links, and a Cedar 12" S12.5W, 23 links.
 1916 - D.H. Vaughan restored corner marked yellow birch 16" N23 1/2°W, 55 links, and Hemlock 9" S17 1/2°E, 66 links.
 ???? - N. Loftus Ripco surveyor, recovered and used this corner to run surveys in Section 16, but no records made of what he recovered. Set iron pipe.
 1978 - USPLS Monument Record Index Number N-13 - Philip T. Hansen recovered a 2" iron pipe with 4" brass cap in bad condition. Recovered W.C.D. on yellow birch stump 30" due south 69.4 links. and stump of sugar 6" N16W, 191.2 links scribed to identify corner.
 Hansen replaced the Ripco iron post with an Oneida County aluminum monument, and drove a 1" Iron Pipe beside it. Hansen marked the following NBT's: Hemlock 12" S46°E, 176.3 links, scribed SC BT., Sugar 12" S2°W, 93.6 links. NBO's: Power pole 3810 16R20 62.0 lks. Iron Pipe 1" S72°W, 62lks., projects 2ft.

6/2/2018 - I found a 2.5" capped Oneida County aluminum monument and witness as shown below.

Note: This corner was located prior to County Trunk Highway A improvements. This monument and USPLS monument record is a perpetuation of a found monument of record.

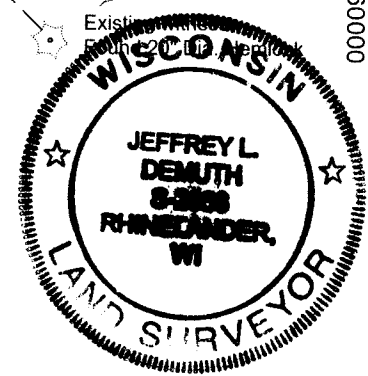
(c)(d)(e) Plan view of corner with ties to at least 4 witness monuments. If in disagreement with previously established corner, show the distances between the two corners and also indicate the ties to the disputed corner.



(i) I, Jeffrey L. DeMuth, Professional Land Surveyor #S-2656, hereby certify that the corner location on this record was perpetuated by me or under my direction and control and that this U.S. Public Land Survey Monument Record is correct and complete to the best of my knowledge and belief.

Signature: *[Handwritten Signature]*

Date: 09/11/2018



N-13