

CERTIFIED LAND CORNER RESTORATION

Index No. L-13

State of Wisconsin }
County of Oneida } ss.

History of original corner establishment:

Original survey by William Daugherty in 1863. North between Sections 15 & 16 40.0 chains. Set post.
BT's

Birch 14" S 31 E 15 links
Hem. 16" N 42 W 12 links

I William E. Bandow, do hereby certify that on the 24 th day of April, 1981, I found evidence of the West 1/4 corner of Section 15 Township 38, North, Range 10 East, Fourth Principal Meridian, as described hereon; and that from this evidence I established a new monument and accessories as described hereon to perpetuate the original location of this corner.

Description of corner evidence found:

Found 1 1/2" capped iron pipe and 2 old BT's. N. Rowinski recovered corner in 1957.

Resident witnesses:

Description of monument and accessories I established to perpetuate the original location of this corner.

Iron pipe remains in place and 2 old BT's. Made 2 new BT's.

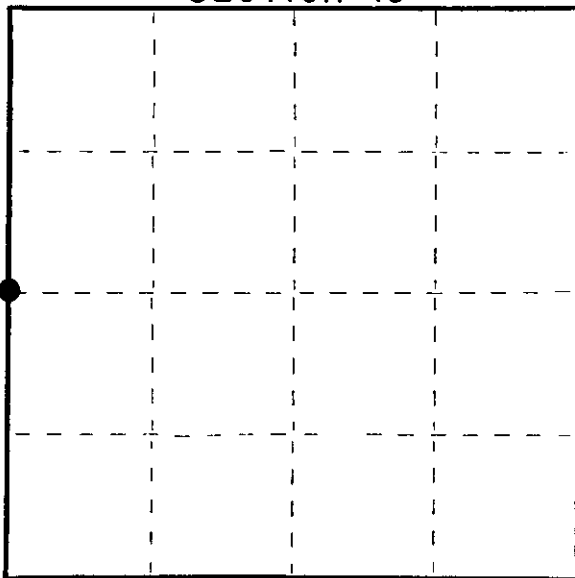
Old BT's Spruce 12" N59E 26.5'
Spruce 9" South 22.0'
New BT's Balsam 10" S 12 W 17.9'
W. Birch 12" N 20 W 20.7'

Distances are to center of trees.



FORM 985 M. G. MILLER CO., MILWAUKEE

SECTION 15



● = Corner monument restored.

Dated at Rhinelander, Wis., this 28 th day of April, 1981

Signature William E. Bandow Title Registered Land Surveyor Registration No. S 1182
(County Surveyor, Registered Land Surveyor, or other duly authorized official)

Office of Register of Deeds, County of Oneida, I hereby certify that the within instrument was filed in this office for record on the 12 day of June, 1981 at 2:00 o'clock A M.

David Verage Korman
(Register of Deeds)

By Cynthia A. Pitts Deputy

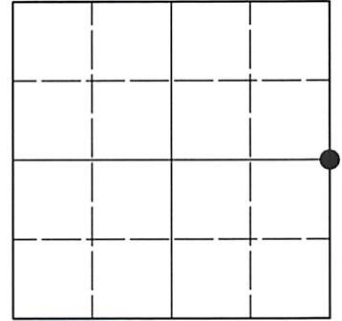
381016 2000

U.S. PUBLIC LAND SURVEY MONUMENT RECORD

Note: This form is intended and designed to fulfill all requirements of Wisconsin Administrative Code, Chapter A-E 7.08 U.S. Public Land Survey Monument Record (3)(a-i).

(a) CORNER LOCATION
 1/4 Cor. of Secs. 15 & 16
 Township 38 North
 Range 10 East of the 4th P.M.
 Town of Sugar Camp & Three Lakes
 County of Oneida

WISCRS - Oneida County
 N: 216,574.24 USft
 E: 308,265.78 USft
 Datum: NAD 83(2011) ep. 2010.00
 GNSS Method: RTN - Direct
 GNSS Control: WISCORS VRS



Sec. 16, T. 38 N., R. 10 E.

(b)(f)(g)(h) Description of monument found at this corner and if it was accepted, state all evidence (material, testimonial, occupational, plats, records, other monuments) used as a basis for accepting. If not accepted or if nothing was found, state evidence used as basis for establishing location. If re-established through lost corner proportionate methods, indicate all monuments, distances and directions used to establish. Indicate type of monument and sign post found or set.

This record is a perpetuation of the following land corner document(s):

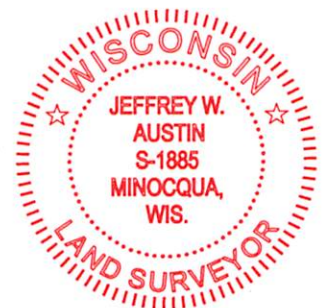
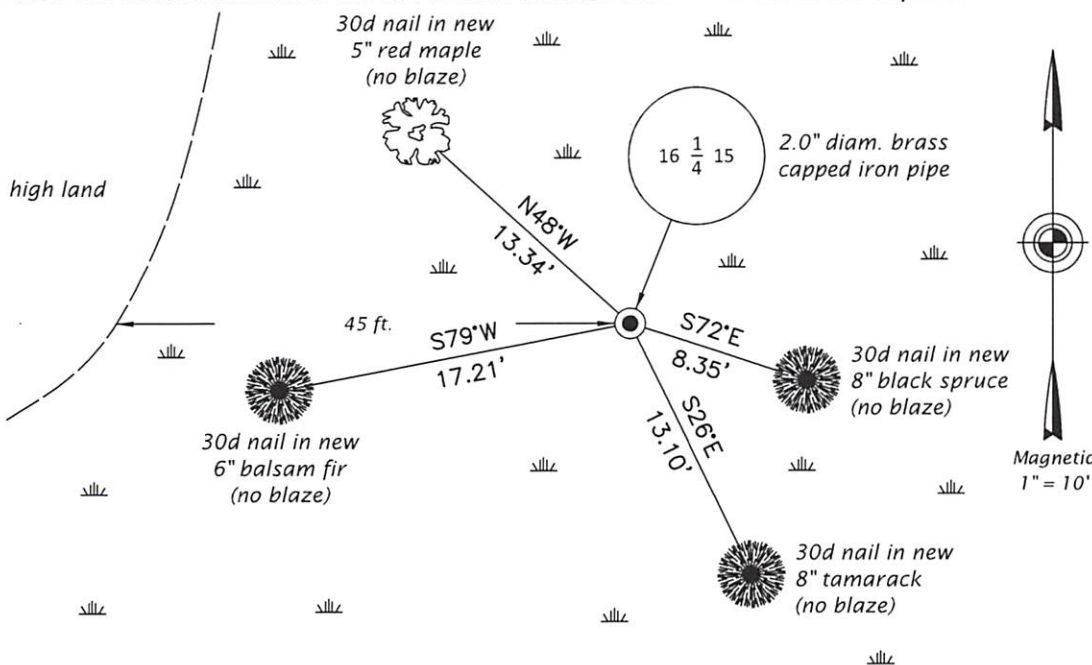
Apr. 28, 1981: Certified Land Corner Restoration by William E. Bandow, filed in Oneida County

A complete history of the corner can be found on the previous land corner document(s). I accept the record activity as a true and faithful perpetuation or reestablishment of the original corner location and further perpetuate it as described below.

May 23, 2021: I found and accepted the record monument, a 2.0" diam. iron pipe, loosely set, with a 2.3" diam. brass cap projecting 6" above the bog surface. The record bearing tree at N59°E is an unmarked stump. There is little definitive evidence remaining of the record accessories, but the location of the monument agrees well with that depicted on OCS map no. C-1669. I found or established accessories as shown below. I found a white vinyl sign post bearing Northeast, 0.6 ft.

The coordinate value shown has been verified by at least one of the following methods: 1) comparison to a previously GNSS determined published value; 2) the value is the average of two or more GNSS observations at a markedly different time; 3) one or more distances were measured back to the GNSS observed corner from temporary GNSS observed offset locations.

(c)(d)(e) Plan view of corner with ties to at least 4 witness monuments. If in disagreement with previously established corner, show the distances between the two corners and also indicate the ties to the disputed.




REGISTER OF DEEDS OFFICE
 ONEIDA COUNTY
 FILED

JUN 23 2021

KYLE J. FRANSON
 REGISTER OF DEEDS

(i) I, Jeffrey W. Austin, Professional Land Surveyor No. S-1885, hereby certify that the corner location on this record was determined by me or under my direction and control and that this U.S. Public Land Survey Monument Record is correct and complete to the best of my knowledge and belief.


 Signature _____ Date JUNE 1, 2021