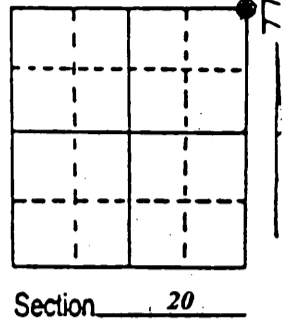


# U.S. PUBLIC LAND SURVEY MONUMENT RECORD

Note: This form is intended and designed to fulfill all requirements of Wisconsin Administrative Code, Chapter A-E 7.08 U.S. Public Land Survey Monument Record (3) (a) (b) (c) (d) (e) (f) (g) (h) (i). An additional sheet may be added if necessary to conform with said requirements.

(a) Corner location: Township 38 North  
 Range 10 East/West  
 Town/City/Village SUGARCAMP  
 County ONEIDA



(b) (f) (g) (h) Description of monument found at this corner and if it was accepted, state all evidence (material, testimonial, occupational, plats, records, other monuments) used as a basis for accepting. If not accepted or if nothing was found, state evidence used as basis for establishing location. If reestablished through lost corner proportionate methods, indicate all monuments, distances and directions used to establish. Indicate type of monument found or set and sign post.

*Sept. 1863 William E. Daugherty ran North 80.00 Ch. between Sections 20 & 21 and set Section post common to sections 16 17 20 21 made BTs. Birch 20 N 80° W 21 Ironwood 7 S 56° E 27*

*In 1896 B.F. Dorr found Section corner & stumps of BTs. Made new BT. Sugar 7 S 13 E 4 1/2*

*In Feb., 1901 Vaughn found original BTS.*

*In Feb. 1954 N. Loftus found an iron pipe & square white post in field corner & set a RIPCO Monument*

*I found a 2" iron pipe with a stamped 4" brass plate & square white post & 1.1/8 iron pipe in a pasture Made new BTs. Set plastic sign post and referenced as shown below.*

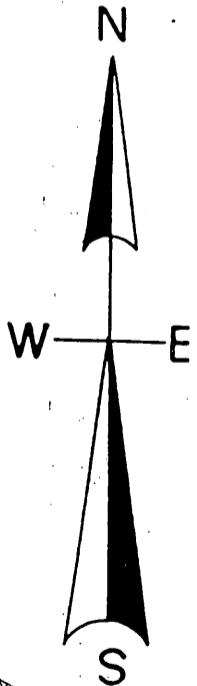
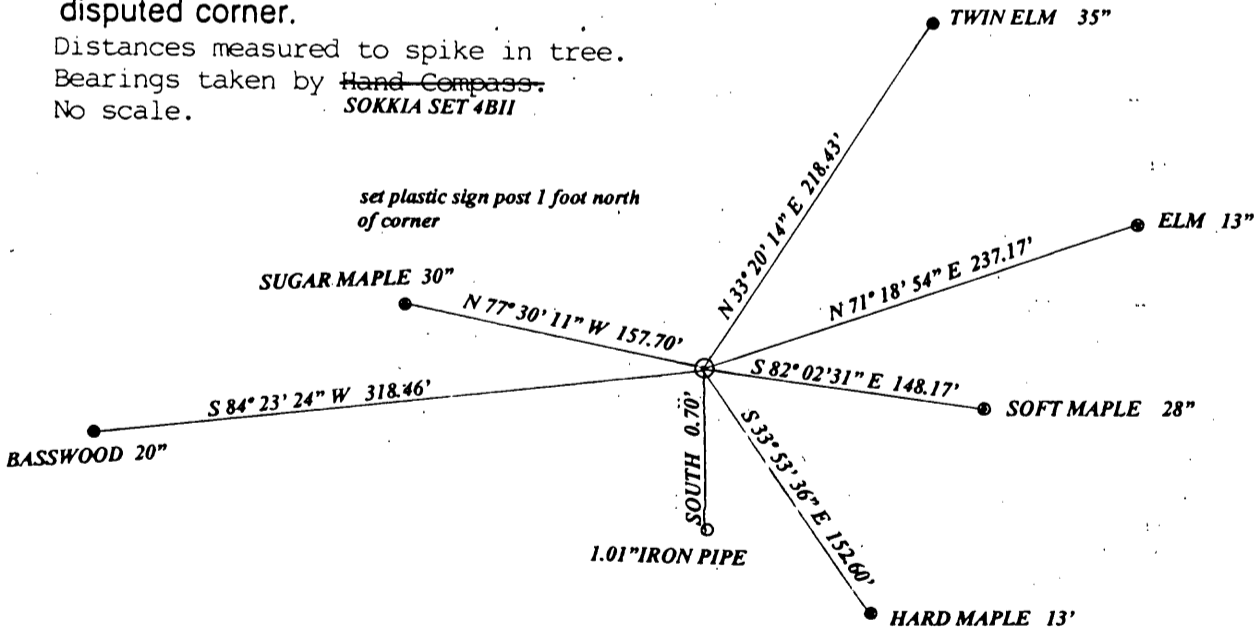
REGISTER OF DEEDS OFFICE  
 ONEIDA COUNTY  
 FILED

APR 19 2013

AT \_\_\_\_\_ O'CLOCK \_\_\_\_\_ M  
 KYLE J. FRANSON  
 REGISTER OF DEEDS

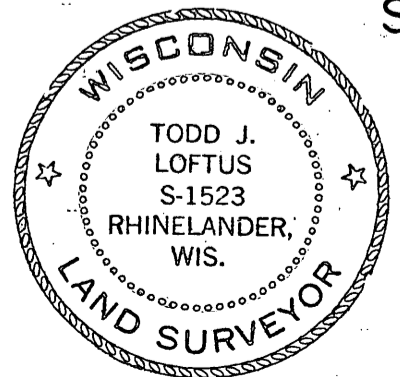
(c) (d) (e) Plan view of corner with ties to at least 4 witness monuments. If in disagreement with previously established corner, show the distances between the two corners and also indicate the ties to the disputed corner.

Distances measured to spike in tree.  
 Bearings taken by ~~Hand Compass~~  
 No scale. *SOKKIA SET 4BII*



(i) I, Todd J. Loftus  
 (type or print name) certify that the corner location on this record was determined by me or under my direction and control and that this U.S. Public Land Survey Monument Record is correct and complete to the best of my knowledge and belief.

Todd J. Loftus Signature  
April 3, 2013 Date



Index No. 19

3810170000  
 Stamp

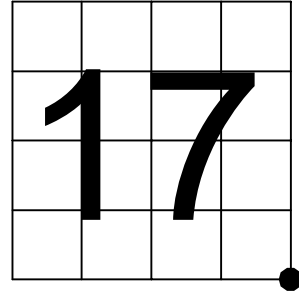
Oneida County  
Land Information Office  
Filed  
1/13/2026

# U.S. PUBLIC LAND SURVEY MONUMENT RECORD

NOTE: This form is intended and designed to fulfill all requirements of Wisconsin Administrative Code, Chapter A-E 7.08 U.S. Public Land Survey Monument Record (3) (a-i)

A-E 7.08(3)(a) Identity of corner:  
Southeast Corner Section 17,  
Township 38 North, Range 10 East  
of the Fourth Principal Meridian,  
Town of Sugar Camp, Oneida County,  
Wisconsin

WISCORS - ONEIDA COUNTY  
N: 214,361.865 USft (XXX,XXX.XXX)  
E: 303,139.747 USft (XXX,XXX.XXX)  
Datum: NAD83 (2011)  
GNSS Method RTN  
GNSS Control WISCORS VRS



The coordinate value shown has been verified by the average of two or more GPS observations at a markedly different time. Coordinates shown in parenthesis are previously published values.

A-E 7.08(3)(b)

Original Surveyor: William E. Daugherty - September 7, 1863 to September 13, 1863  
Birch 20 - N 80° W, 25 Links, Ironwood 7 - S 56° E, 27 Links

See previous U.S. Public Land Survey Monument Record - N9 - April 3, 2013 - Surveyor 1523 - Todd J. Loftus - THENCE:

- August 26, 2019 - Surveyor 1731 - Kip W. Soder - indicates this position as "RIPCO iron pipe brass cap monument found in place" on county record Map #B8156.

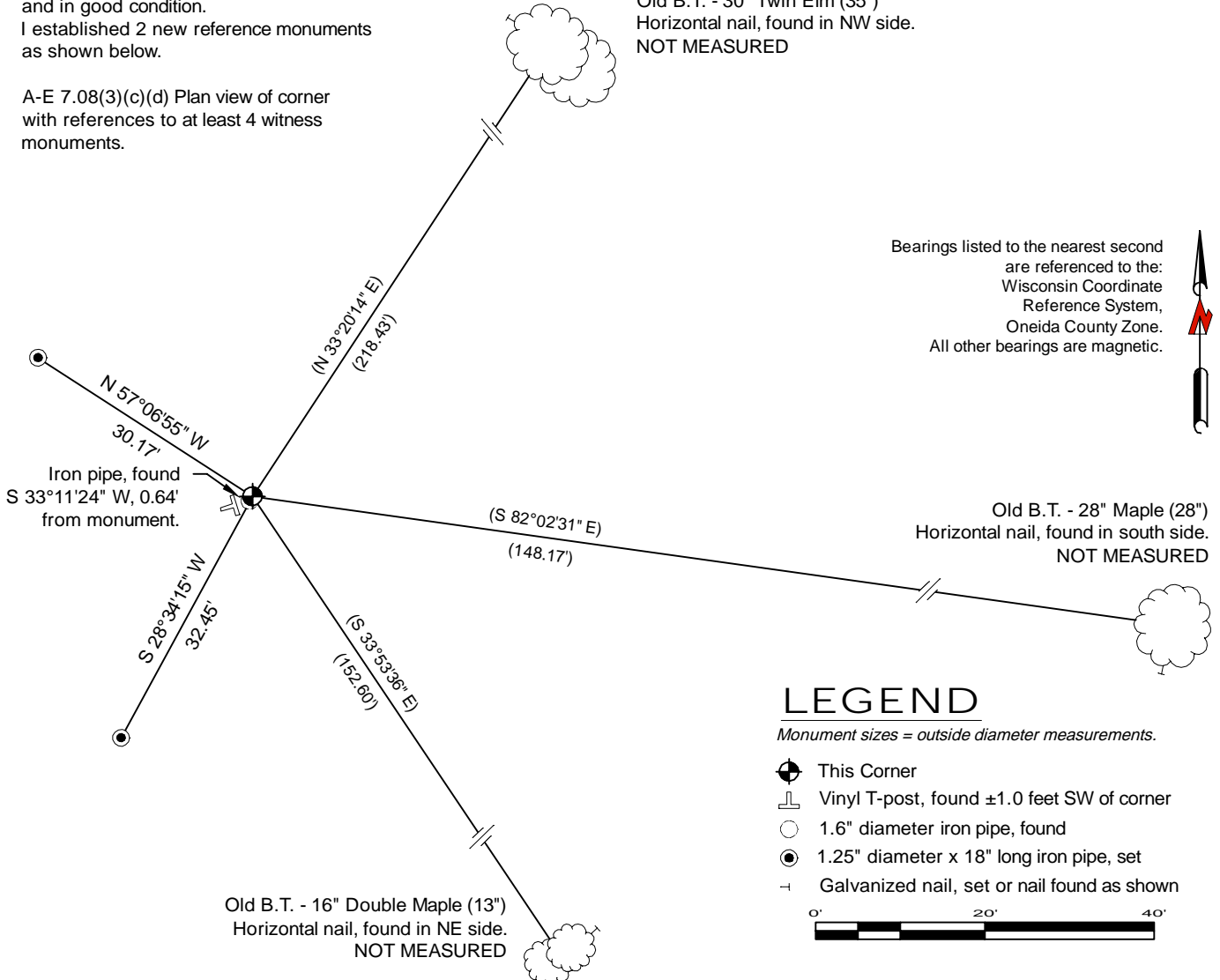
December 11, 2025 - I found a 2.4 diameter iron pipe monument with a 4" square plate stamped to identify the corner location affixed to the top. The monument is on high land, in an open field, extends ±24" above grade, and is ±5" out of plumb, leaning SE. I measured to the base of the monument where it enters the ground.

I also found 3 of Loftus's bearing trees alive and in good condition.

I established 2 new reference monuments as shown below.

Old B.T. - 30" Twin Elm (35")  
Horizontal nail, found in NW side.  
NOT MEASURED

A-E 7.08(3)(c)(d) Plan view of corner with references to at least 4 witness monuments.

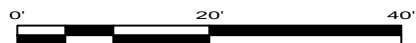


Bearings listed to the nearest second are referenced to the: Wisconsin Coordinate Reference System, Oneida County Zone. All other bearings are magnetic.

## LEGEND

Monument sizes = outside diameter measurements.

- ⊙ This Corner
- ⊥ Vinyl T-post, found ±1.0 feet SW of corner
- 1.6" diameter iron pipe, found
- 1.25" diameter x 18" long iron pipe, set
- ⊢ Galvanized nail, set or nail found as shown



A-E 7.08(3)(e) 1863 Surveyor set a post, 2013 Surveyor found 2" iron pipe with a 4" brass plate, 2019 Surveyor found similar, as did I in 2025.

A-E 7.08(3)(f) I accept this monument in good faith as a FOUND PERPETUATED LOCATION of the corner.

A-E 7.08(3)(g)(h) This corner was not determined through lost-corner-proportionate methods.

A-E 7.08(3)(i) I, Jeffrey L. DeMuth, Professional Land Surveyor No. S-2656, hereby certify that the corner location on this record was determined by me or under my direction and control, and that this U.S. Public Land Survey Monument Record is correct and complete to the best of my knowledge, and belief.



*Jeffrey L. DeMuth*  
December 15, 2025  
DATE

SIGNATURE

43810170000