

This form is intended to fulfill the requirements of Chapter A-E7.08 (3)(a) thru (i) U.S. Public Land Survey Monument Location Record, Wisconsin Administrative Code. Use the reverse side of form for continuation.

**U.S. PUBLIC LAND SURVEY MONUMENT LOCATION RECORD**

Recorders Data

USPLS CORNER: NW SECTION CORNER SECTION: 20 TOWNSHIP: 38 NORTH RANGE: 10 EAST

NAME OF WATERWAY FOR M.C. CORNER : N/A SECTION LINE: N/A

~~(CITY)(VILLAGE)(TOWN)~~ OF: SUGAR CAMP COUNTY OF: ONEIDA

Description of monument found or placed and all other evidence used as the basis for monument location; including monuments and measurements required if the corner location was reestablished by lost corner proportionate methods. Also indicate name of the original surveyor, original survey date and the corner monument, bearing trees, witness or other reference monuments established, including measured bearing and distance ties, from available survey records.

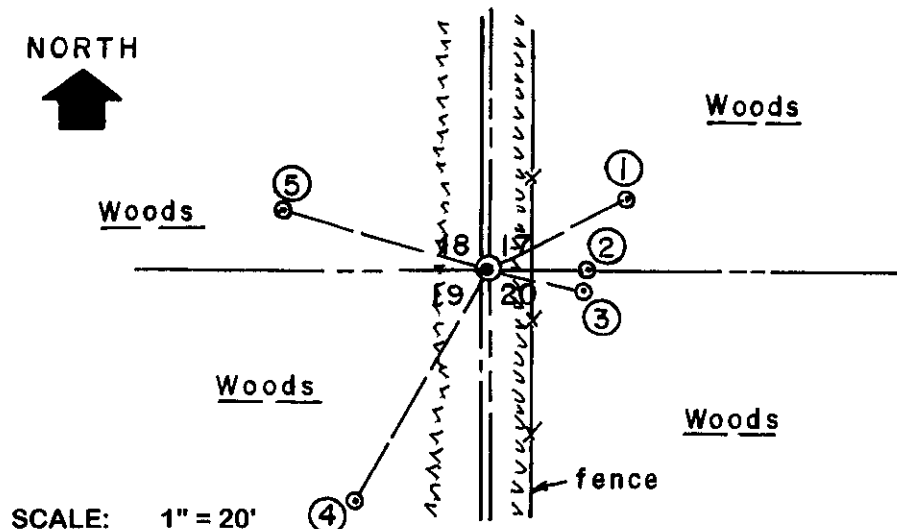
Found an old rusting 1.25" dia. iron pipe monument with a 4" square steel plate cap stamped by Ripco in 1954 as a witness monument 16 links East of the section corner location. I could not detect any metallic monument with metal locator in existing N/S woods roadway at the corner location, so I drove a standard 2" dia. by 30" long aluminum pipe monument with stamped Oneida County cap 2" below grade of the existing unimproved woods roadway at 10.56'/16 links West(magnetic) from the Ripco iron pipe witness monument found; the driven corner monument falls about 1 foot East of the old woods roadway centerline. I also found and reset a standard white poly 'T' marker post 10" East of the Ripco iron pipe witness monument.

In September 1863, William E. Daugherty/GLO set a wood post as the original corner and noted OBTs: a 10" Aspen N88°W 15 links and a 14" Cedar N46°E 11 links; all now obliterated within existing roadway corridor cut. In 1911, D.H. Vaughan notes a wood post at this corner and new BTs: a ?Bw S45°W 11.5 links and a 12" Bw S49°E 27 links; all now obliterated.

In 1954, Norman Loftus/RLS 259 located this corner position from Vaughan evidence found and set a Ripco capped iron pipe witness monument East 16 links and marked new BTs: a 6" Cedar S21°E 24 links, now a 13" Cedar S13°E with open and scribed lower face blaze and a Ripco aluminum location tag nailed to upper face; and a 6" Cedar N11°E 60 links, now a 11" Cedar N08°E with upper & lower face blazes shut but fissure scars plain.

This recovery completed May 16, 2003; there were no direct witnesses.

Plan view map of monument location with bearing and distance ties to a minimum of four(4) described witness or reference monuments of concrete, natural stone, iron, live bearing trees or equivalent material. If applicable, also show a minimum of two(2) bearing and distance ties to any other monument found and not accepted; including the bearing and distance from the accepted monument.



**WITNESS MONUMENT TIES:**

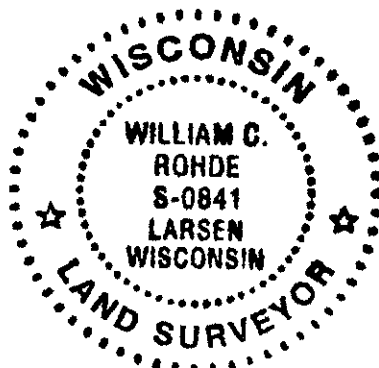
- ① New 8" Fir BT N62°E 16.62'.
- ② Ripco capped iron pipe monument found East 10.56'.
- ③ New 10" Hemlock BT S78°E 10.29'.
- ④ New 9" Fir BT S29°W 27.40'.
- ⑤ New 4" Cedar BT N73°W 21.83'.

Corner is accessible on foot via woods road from gated end of Poplar Road about 1/4 mile North. A barbed wire fence exists along East edge of woods roadway at corner location.

SCALE: 1" = 20'

Unless otherwise indicated, all bearing tree ties are to a .25" dia. by 2.5" long PK nail with a 1.25" dia. steel washer driven into unblazed right face and a .25" dia. by 2.5" long PK nail with a 2" dia. steel washer stamped BT is also driven into unblazed face of bearing tree at DBH; the basis for measured bearings is by compass to nearest degree and all tie distances are measured horizontal by steel tape corrected to nearest 1/100th feet at standard temperature of 68° F.

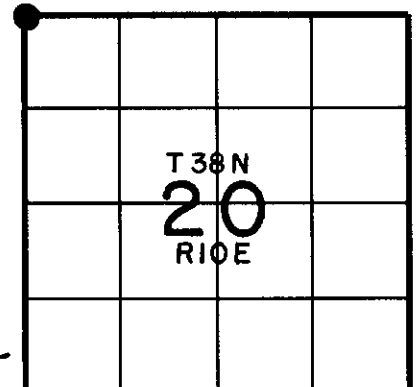
RLS SEAL:



**LAND SURVEYOR CERTIFICATE:**

I, William C. Rohde, hereby certify that I am duly licensed as a Professional Land Surveyor in the State of Wisconsin; that this USPLS monument location was determined by me and/or under my direct supervision and control; and that this U.S. Public Land Survey Monument Location Record is true and correct to the best of my knowledge and belief.

Signed: *William C. Rohde*  
William C. Rohde RLS 841



SECTION LOCATION MAP  
INDEX NO. N-5

Oneida County  
Land Information Office  
Filed  
1/13/2026

# U.S. PUBLIC LAND SURVEY MONUMENT RECORD

NOTE: This form is intended and designed to fulfill all requirements of Wisconsin Administrative Code, Chapter A-E 7.08 U.S. Public Land Survey Monument Record (3) (a-i)

A-E 7.08(3)(a) Identity of corner:  
Southeast Corner Section 18,  
Township 38 North, Range 10 East  
of the Fourth Principal Meridian,  
Town of Sugar Camp, Oneida County,  
Wisconsin

WISCORS - ONEIDA COUNTY  
N: 214,682.942 USft (XXX,XXX.XXX)  
E: 297,685.529 USft (XXX,XXX.XXX)  
Datum: NAD83 (2011)  
GNSS Method RTN  
GNSS Control WISCORS VRS

The coordinate value shown has been verified by the average of two or more GPS observations at a markedly different time. Coordinates shown in parenthesis are previously published values.

A-E 7.08(3)(b)

Original Surveyor: William E. Daugherty - September 7, 1863 to September 13, 1863  
Aspen 10 - N 88° W, 15 Links, Cedar 14 - N 46° E, 11 Links

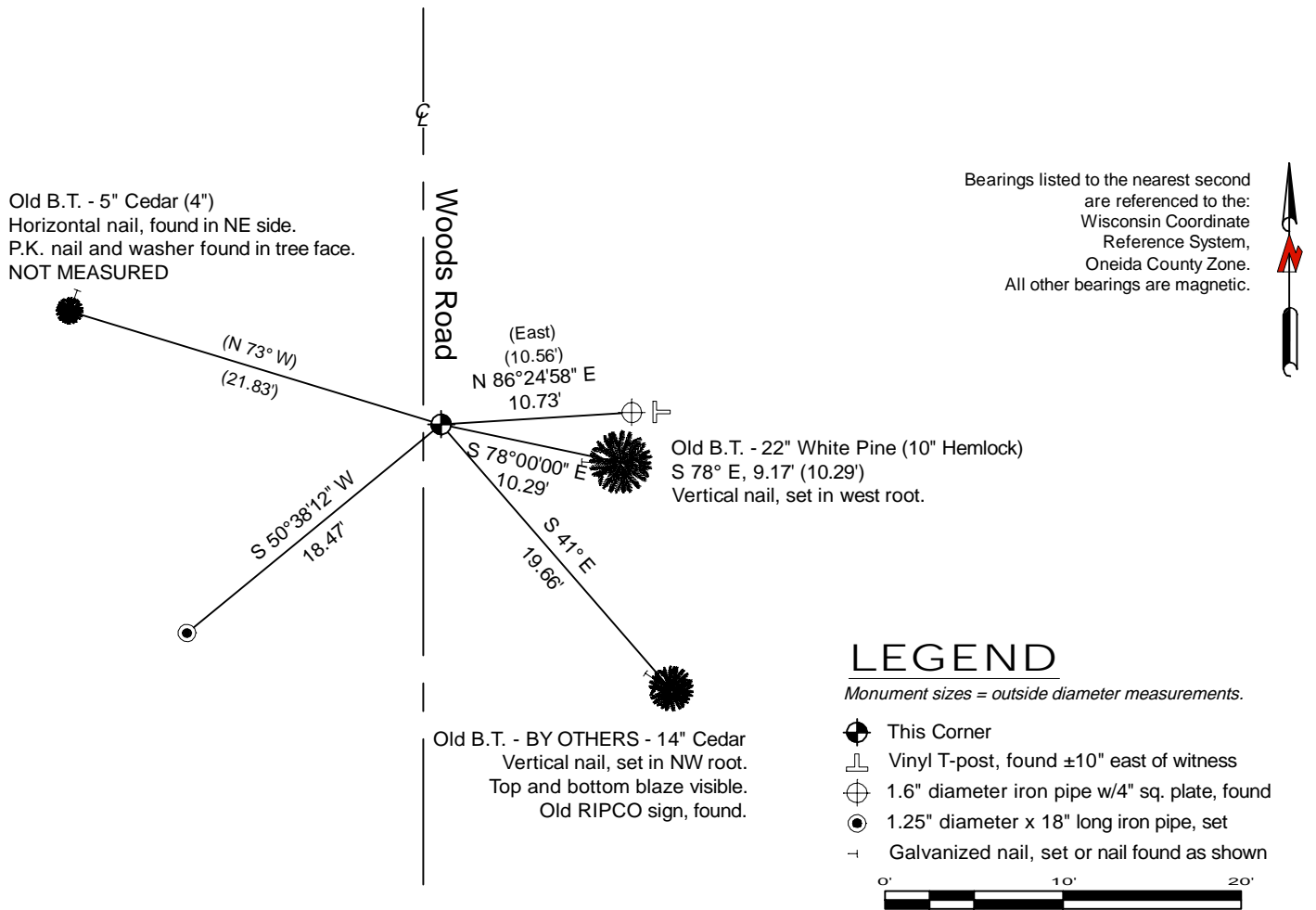
See previous U.S. Public Land Survey Monument Record - N-5 - August 01, 2003 - Surveyor 0841 - William C. Rohde - THENCE:

- August 26, 2019 - Surveyor 1731 - Kip W. Soder - indicates this position as "Oneida Co. aluminum cap monument found in place" on county record Map #B8156.

December 8, 2025 - I found a 3.25" diameter aluminum capped monument stamped to identify the corner location. The monument is ±1 foot east of the centerline of a north-south woods road, and is flush with grade.

I also found 2 of Rohde's bearing trees alive and in good condition, 1 bearing tree by others, and a RIPCO reference monument. I established 1 new reference monuments as shown below.

A-E 7.08(3)(c)(d) Plan view of corner with references to at least 4 witness monuments.

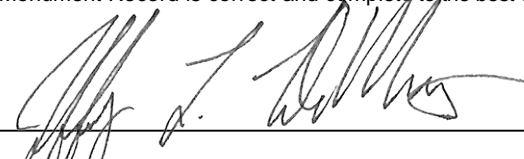


A-E 7.08(3)(e) 1863 Surveyor set a post, 2003 Surveyor set an Oneida Co. aluminum monument, 2019 Surveyor found the same, as did I in 2025.

A-E 7.08(3)(f) I accept this monument in good faith as a FOUND PERPETUATED LOCATION of the corner.  
A-E 7.08(3)(g)(h) This corner was not determined through lost-corner-proportionate methods.

A-E 7.08(3)(i) I, Jeffrey L. DeMuth, Professional Land Surveyor No. S-2656, hereby certify that the corner location on this record was determined by me or under my direction and control, and that this U.S. Public Land Survey Monument Record is correct and complete to the best of my knowledge, and belief.



  
SIGNATURE \_\_\_\_\_ DATE December 15, 2025

4381018000