

State of Wisconsin }
County of Oneida } ss.

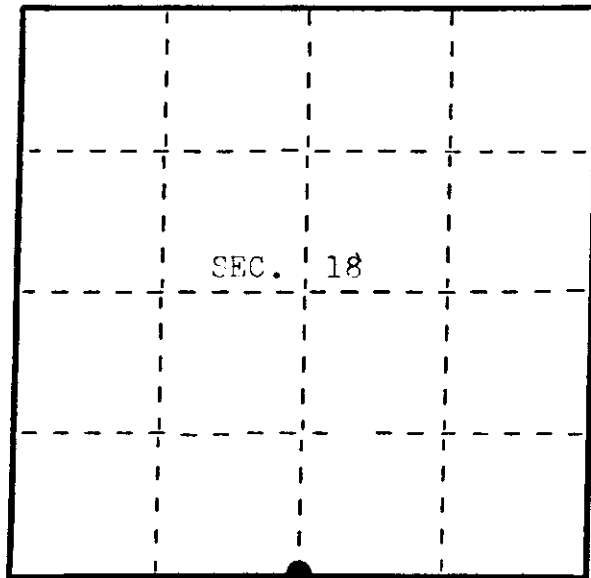
I Robert E. Badow, do hereby certify that on the 20th day of July, 1984, I found evidence of the South one-quarter corner of Section 18 Township 38, North, Range 10 East, Fourth Principal Meridian, as described hereon; and that from this evidence I established a new monument and accessories as described hereon to perpetuate the original location of this corner.

Resident witnesses:

Michael E. Weber

Eric Zyhowski

Kip Soder



● = Corner monument restored.

U. S. Public Land Survey Monument Record

Index No. N-3

History of original corner establishment:

Original corner was established during the course of the subdivision of T 38 N, R 10 E, which was started Sept. 7, 1863 and completed Sept. 13, 1863, by William E. Daugherty, Deputy Surveyor.

Original B.T.'s:

10" Cedar S 78° W 30 lks.
No other tree near.

Description of corner evidence found:

Found a 1-1/2" iron pipe in place used in a previous survey by Todd Loftus, dated 3/20/80.

Found the following bearing trees in place:

8" W. Birch S 23° E 17.73' (Measurements are to a nail in
6" W. Birch S 75° W 25.15' the side of the trees.)

Description of monument and accessories I established to perpetuate the original location of this corner.

No other suitable trees near for bearing trees.

Dated at Eagle River, Wis., this 14th day of Sept., 1984.

Signature Robert E. Badow Title Registered Land Surveyor Registration No. S-104
(County Surveyor, Registered Land Surveyor, or other duly authorized official)

Office of Register of Deeds, County of _____, I hereby certify that the within instrument was filed in this office for record on the _____ day of _____, 19____ at _____ o'clock _____ M.

(Register of Deeds)

By _____ Deputy

38/0180020

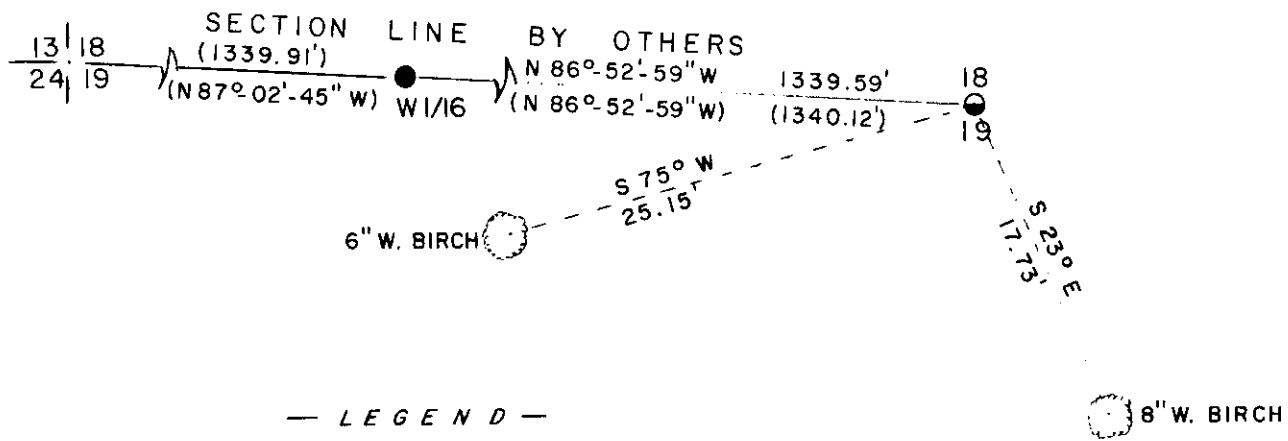
Describe any material discrepancy between the location of the corner as restored or reestablished and the location of that corner as previously restored or reestablished by distance and direction. Show the discrepancy on the plan view drawing under (d), above. Show the distances between the corner as previously restored or reestablished and (1) the corner as restored or reestablished, and (2) to at least 2 of the witness monuments shown on the drawing in (d), above.
See sketch below.

Was the corner restored through acceptance of (1) an obliterated evidence location, or, (2) a found perpetuated location?

Corner was restored through acceptance of a found perpetuated location.

Was the corner reestablished through lost corner proportionate methods? If so, show the method, including the directions and distances to other public land survey corners used as evidence or used for proportioning in determining the corner location?

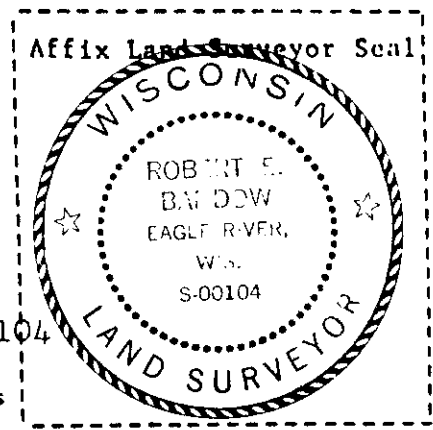
See sketch below.



— LEGEND —

SCALE: 1" = 10'

- 1-1/2" IRON PIPE FOUND IN PLACE
- RIPCO 1" IRON PIPE WITH PLATE FOUND IN PLACE
- () TODD J. LOFTUS BEARING AND DISTANCE FROM A SURVEY DATED 3/20/80.



I, Robert E. Bandow, Registered Land Surveyor, S-104
(type or print name) certify that the corner location shown on this record was determined by me or under my direction and control and that this U.S. Public Land Survey Monument Record is correct and complete to the best of my knowledge and belief.

Signature Robert E. Bandow REGISTER OF DEEDS OFFICE, 1984
ONEIDA COUNTY, Wisconsin

FILED
JUL 1 1986
At 8:55 O'Clock A.M.
DORIS VERAGE KUEHN
REGISTER OF DEEDS

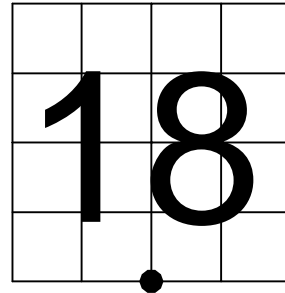
U.S. PUBLIC LAND SURVEY MONUMENT RECORD

NOTE: This form is intended and designed to fulfill all requirements of Wisconsin Administrative Code, Chapter A-E 7.08 U.S. Public Land Survey Monument Record (3) (a-i)

Oneida County
Land Information Office
Filed
1/13/2026

A-E 7.08(3)(a) Identity of corner:
South 1/4 Corner Section 18,
Township 38 North, Range 10 East
of the Fourth Principal Meridian,
Town of Sugar Camp, Oneida County,
Wisconsin

WISCRS - ONEIDA COUNTY
N: 214,840.499 USft (XXX,XXX.XXX)
E: 295,011.661 USft (XXX,XXX.XXX)
Datum: NAD83 (2011)
GNSS Method RTN
GNSS Control WISCORS VRS



The coordinate value shown has been verified by the average of two or more GPS observations at a markedly different time. Coordinates shown in parenthesis are previously published values.

A-E 7.08(3)(b)

Original Surveyor: William E. Daugherty - September 7, 1863 to September 13, 1863
Cedar 10 - S 78° W, 30 Links, no other trees near.

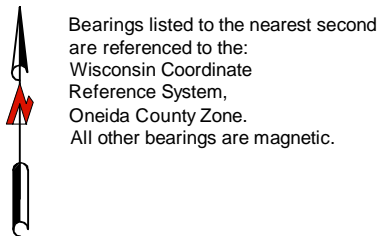
See previous U.S. Public Land Survey Monument Record - N-3 - September 14, 1984 - Surveyor 104 - Robert E. Badow - THENCE:

- October 26, 1998 - Surveyor 1682 - Glen Barker - indicates this position as "1-1/4" iron pipe found" on county record Map #C1512.
- March 19, 2009 - Surveyor 1523 - Todd J. Loftus - indicates this position as "found 1.25" iron pipe" on county record Map #B7142.

December 11, 2025 - I found a 1.6 diameter iron pipe monument. The monument is near the west edge of an alder swamp and at the toe of a 20 foot high berm from quarry to the west, and extends ±12" above grade.

I also found 1 of Badow's bearing trees dead and standing, and 1 bearing tree by others. I established 2 new reference monuments as shown below.

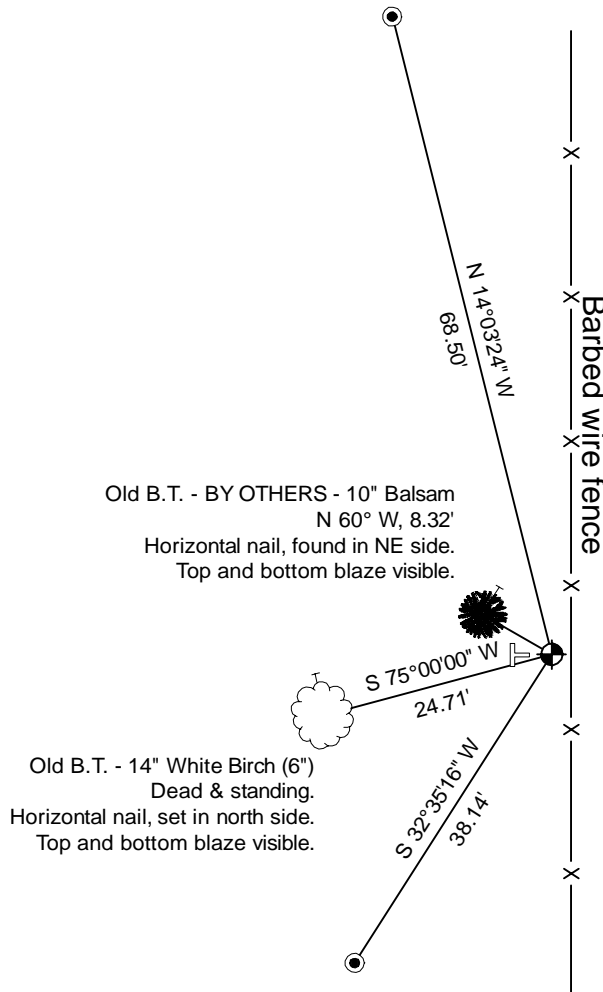
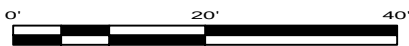
A-E 7.08(3)(c)(d) Plan view of corner with references to at least 4 witness monuments.



LEGEND

Monument sizes = outside diameter measurements.

- This Corner
- Vinyl T-post, set ±1.8 feet west of corner
- 1.25" diameter x 18" long iron pipe, set
- Galvanized nail, set or nail found as shown

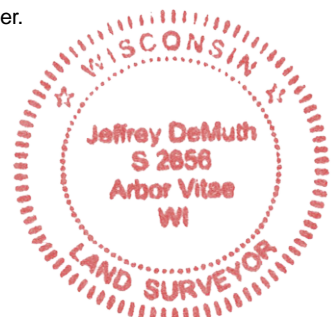


A-E 7.08(3)(e) 1863 Surveyor set a post, 1984 Surveyor found 1-1/2" iron pipe, subsequent Surveyors found the similar, as did I in 2025.

A-E 7.08(3)(f) I accept this monument in good faith as a FOUND PERPETUATED LOCATION of the corner.

A-E 7.08(3)(g)(h) This corner was not determined through lost-corner-proportionate methods.

A-E 7.08(3)(i) I, Jeffrey L. DeMuth, Professional Land Surveyor No. S-2656, hereby certify that the corner location on this record was determined by me or under my direction and control, and that this U.S. Public Land Survey Monument Record is correct and complete to the best of my knowledge, and belief.



SIGNATURE

December 15, 2025

DATE

43810180020