

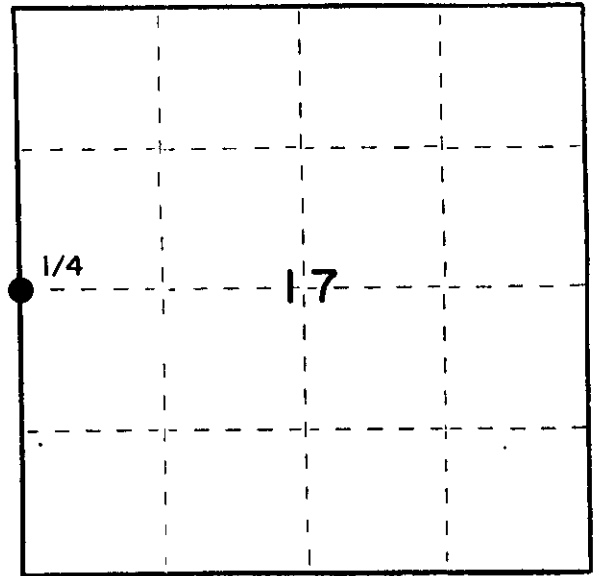
U. S. PUBLIC LAND SURVEY MONUMENT RECORD

INSTRUCTIONS :

This record shall show the location of the corner and shall include all of the following nine elements (a through i).

- (a) Identify the corner by reference to the U.S. public land survey system.
 O = Corner monument restored.

T 38 N
R 10 E

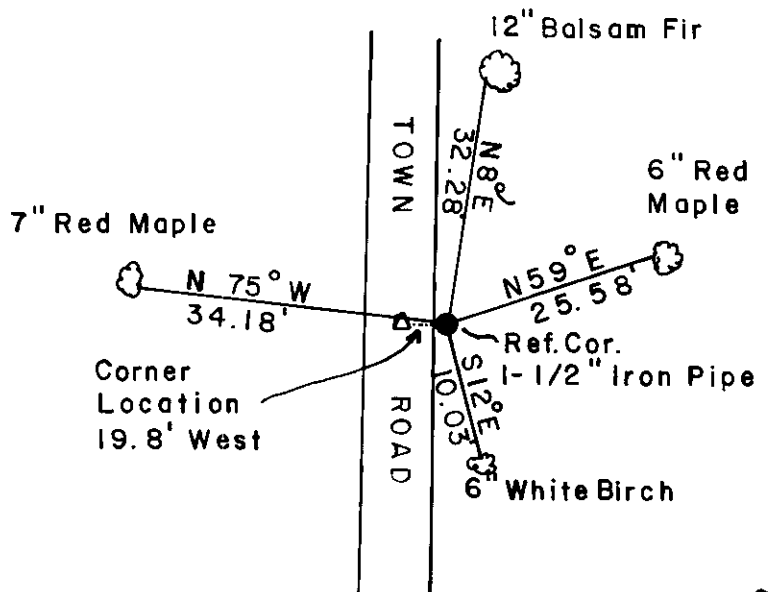
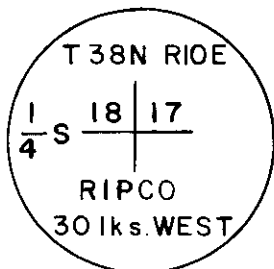


- (b) Describe any record evidence, monument evidence, occupational evidence, testimonial evidence or any other material evidence you considered, and whether the monument was found or placed.

Recovered R.I.P.CO. 1 1/2" iron pipe with 4" squared metal cap. Monument is a reference corner which is 30 lks east of true corner position that falls in a north-south town road west of centerline. N. Loftus Registered Land Surveyor re-established corner in 1954 based on Dorr and Vaughan's survey notes.

- (c) In the plan view drawing below, provide reference ties to at least 4 witness monuments, or, if the location is within a municipality, to at least 2 witness monuments. (Witness monuments shall be made of concrete, natural stone, iron or other equally durable material.)
 Describe witness monuments.

- (d) Show a plan view drawing depicting the relevant monuments and reference ties which is sufficient in detail to enable accurate relocation of the corner monument if the corner monument is disturbed. Indicate north.



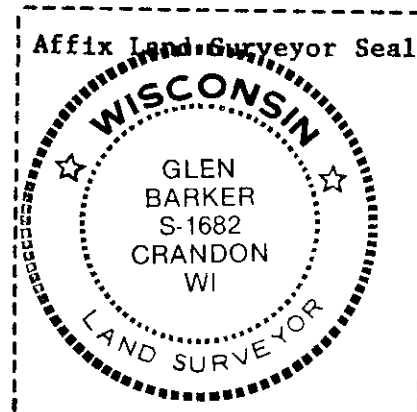
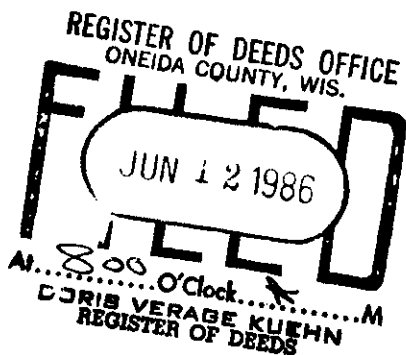
L-5

(e) Describe any material discrepancy between the location of the corner as restored or reestablished and the location of that corner as previously restored or reestablished by distance and direction. Show the discrepancy on the plan view drawing under (d), above. Show the distances between the corner as previously restored or reestablished and (1) the corner as restored or reestablished, and (2) to at least 2 of the witness monuments shown on the drawing in (d), above.

(f) Was the corner restored through acceptance of (1) an obliterated evidence location, or, (2) a found perpetuated location?

Perpetuated location.

(g&h) Was the corner reestablished through lost corner proportionate methods? If so, show the method, including the directions and distances to other public land survey corners used as evidence or used for proportioning in determining the corner location?

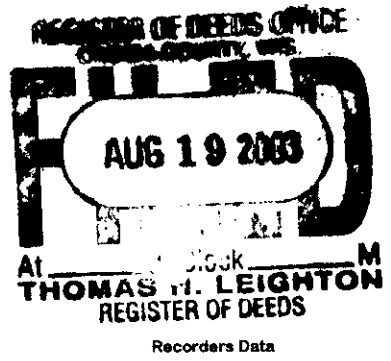


(i) I, Glen Barker
(type or print name) certify that the corner location shown on this record was determined by me or under my direction and control and that this U.S. Public Land Survey Monument Record is correct and complete to the best of my knowledge and belief.

Signature

Date

11/12/85



This form is intended to fulfill the requirements of Chapter A-E7.08 (3)(a) thru (i) U.S. Public Land Survey Monument Location Record, Wisconsin Administrative Code. Use the reverse side of form for continuation.

U.S. PUBLIC LAND SURVEY MONUMENT LOCATION RECORD

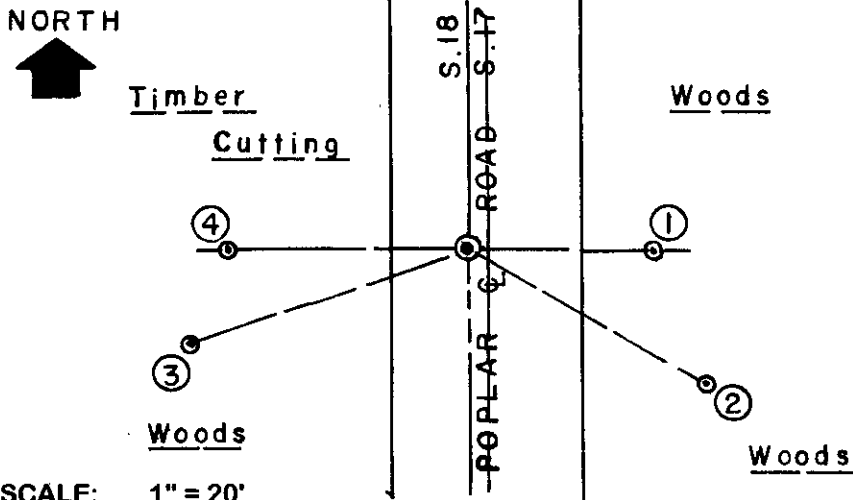
USPLS CORNER: WEST 1/4 CORNER SECTION: 17 TOWNSHIP: 38 NORTH RANGE: 10 EAST
 NAME OF WATERWAY FOR M.C. CORNER : N/A SECTION LINE: N/A
 (CITY)(VILLAGE)(TOWN) OF: SUGAR CAMP COUNTY OF: ONEIDA

Description of monument found or placed and all other evidence used as the basis for monument location; including monuments and measurements required if the corner location was reestablished by lost corner proportionate methods. Also indicate name of the original surveyor, original survey date and the corner monument, bearing trees, witness or other reference monuments established, including measured bearing and distance ties, from available survey records.

Found old rusting 1.5" dia. iron pipe with 4" square steel plate cap stamped by Ripco as a witness monument set 30 links East of the section corner in N/S blacktop roadway in 1954. Monument is tipped to North about 31" up and loose in a cairn of rocks at grade, so I replumbed and secured from which I found a disturbed 60d spike with ribbon about 5.5" below existing blacktop mat in a previously dug-out and patched hole thru the blacktop at only 19.65' West, so I drove a 5/8" dia. by 24" long rebar at the record 19.80'(30 links) West (magnetic) from the Ripco iron pipe witness monument into the old pavement cavity as the section corner location with uncapped top 1" below mat surface and patched the hole with road mix material. I also set 1/4" dia. by 2.5" long PK nails in the blacktop mat N,S, E & W on right lines thru the rebar top for future recovery purposes. In September 1863, William E. Daugherty/GLO set a wood post as the original corner and noted OBTs: a 12" Elm N67°E 7 links and a 10" Bw S85°W 18 links; all now obliterated within existing roadway. In 1954, Norman Loftus/RLS 259 determined the corner location from record notes by D.H. Vaughan and B.F. Dorr and set the Ripco capped iron pipe witness monument 30 links East as described above and found this date.

In November 1985, Glen Barker/RLS 1682 found the Ripco iron pipe witness monument and referenced it to new BTs: a 6" Mr N59°E 25.58', found OK; a 6" Bw S12°E 10.03', found OK with upper & lower blazes open and a survey marker sign nailed to upper face; and a 7" Mr N75°W 34.18', now gone. Although he filed a USPLSS location record on June 12, 1985, no monument was noted at the section corner nor ties measured to same, so this corner was set and referenced per the approval of Oneida County Surveyor Michael Romportl on May 16, 2003; there were no direct witnesses.

Plan view map of monument location with bearing and distance ties to a minimum of four(4) described witness or reference monuments of concrete, natural stone, iron, live bearing trees or equivalent material. If applicable, also show a minimum of two(2) bearing and distance ties to any other monument found and not accepted; including the bearing and distance from the accepted monument.

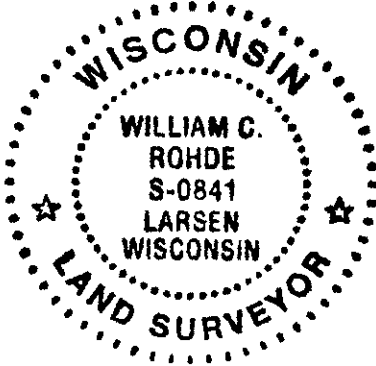


- WITNESS MONUMENT TIES:**
- ① Ripco iron pipe witness monument found East 19.80' in a cairn of rocks.
 - ② New 5.5" Fir BT S60°E 28.80'.
 - ③ New 8" Fir BT S71°W 30.60'.
 - ④ Older 1" dia. iron pipe witness monument found flush West 24.50'; I set a standard yellow poly Reference Mark cap in top with a wire stake flag inserted in center.
- A standard white poly 'T' marker post was also found 8" West of the West iron pipe witness monument found.

SCALE: 1" = 20'

Unless otherwise indicated, all bearing tree ties are to a .25" dia. by 2.5" long PK nail with a 1.25" dia. steel washer driven into unblazed right face and a .25" dia. by 2.5" long PK nail with a 2" dia. steel washer stamped BT is also driven into unblazed face of bearing tree at DBH; the basis for measured bearings is by compass to nearest degree and all tie distances are measured horizontal by steel tape corrected to nearest 1/100th feet at standard temperature of 68° F.

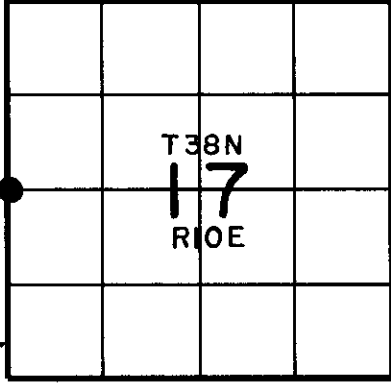
RLS SEAL:



LAND SURVEYOR CERTIFICATE:

I, William C. Rohde, hereby certify that I am duly licensed as a Professional Land Surveyor in the State of Wisconsin; that this USPLS monument location was determined by me and/or under my direct supervision and control; and that this U.S. Public Land Survey Monument Location Record is true and correct to the best of my knowledge and belief.

Signed: *William C. Rohde*
 William C. Rohde RLS 841



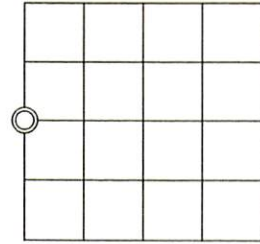
SECTION LOCATION MAP INDEX NO. 45

3810182000

U.S. PUBLIC LAND SURVEY MONUMENT RECORD

Note: This form is intended and designed to fulfill all requirements of Wisconsin Administrative Code. Chapter A-E 7.08 U.S. Public Land Survey Monument Record (3)(a)(b)(c)(d)(e)(f)(g)(h)(i). An additional sheet may be added to if necessary to conform with said requirements.

(a) Corner Location: November, 2000 Observation - Aero-Metric
 West 1/4 Corner, 1/2" Rod
 Section 17, N 217,212.01
 Township 38 North, E 297,692.78
 Range 10 East, Oneida County Coordinate System
 Town of Sugar Camp, Oneida County, NAD83(91)
 Wisconsin



Section 17

(b)(f)(g)(h) Description of monument found at this corner and if it was accepted, state all evidence (material, testimonial, occupational, plats, records, other monuments) used as a basis for accepting. If not accepted or if nothing was found, state evidence used as basis for establishing location. If reestablishment through lost corner proportionate methods, indicate all monuments, distances and directions used to establish. Indicate type of monument found or set and sign post.

1863 - William E. Daugherty/GLO set a wood post and the following witnesses: 12" Elm N67°E, 7 links, 10" Bw S85°W 18 links.

1954 - Norman Loftus/RLS 259 determined corner location from notes by D.H. Vaughan and B.F. Dorr and set a Ripco capped Iron Pipe 30 links east.

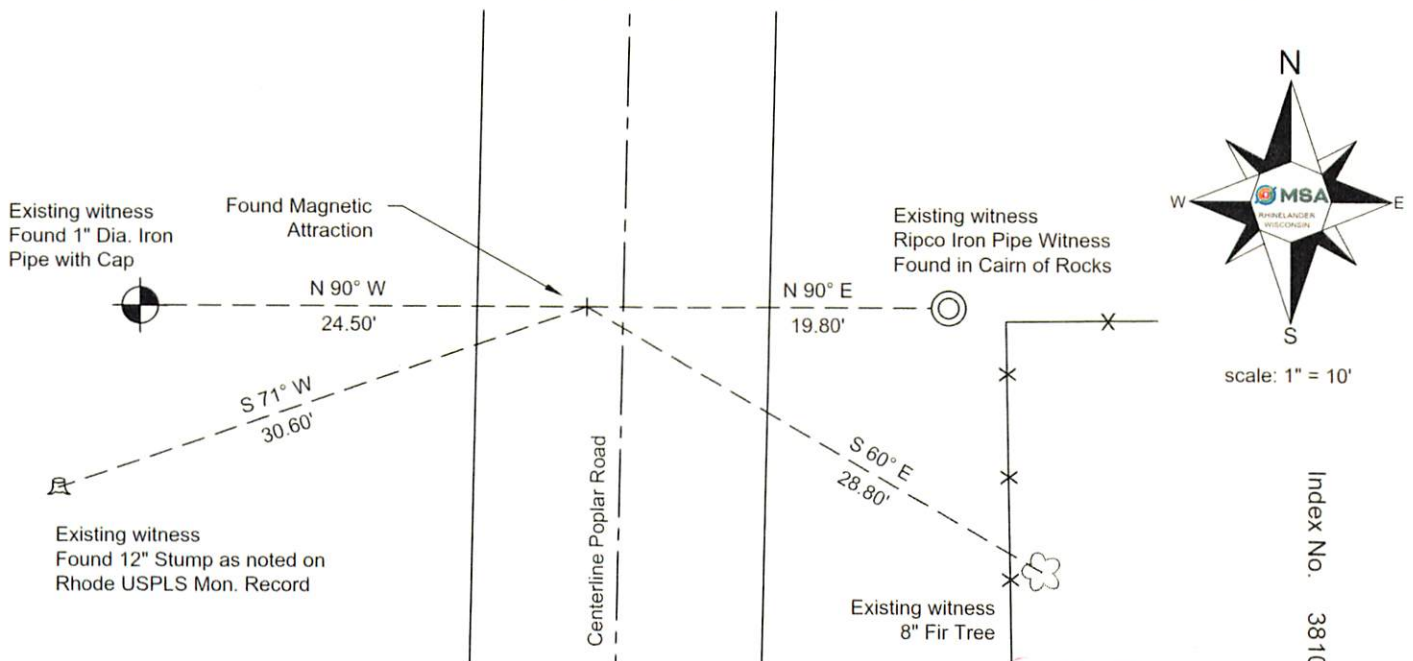
1985 - USPLS Monument Record Index Number L-5 - Glen Barker found Ripco iron pipe and referenced it to new BT's 6" Mr N59E 25.58, found ok, a 6" Bw S12E 10.03, found okay, and a 7" Mr N75W 34.18, now gone.

August 2003 - USPLS Monument Record Index Number L-5 - William Rohde found a disturbed 60d spike 5.5" below asphalt in a previously dug out and patched hole. Rohde set a 5/8" diameter X 24" long Iron Rod as the section corner location.

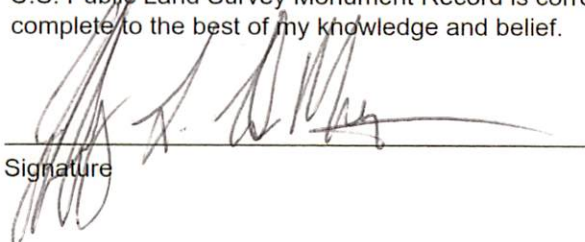
06/02/2017 - I found a magnetic attraction beneath the asphalt surface of Poplar Road. This location agreed within 0.5 feet of the recorded measurements shown below.

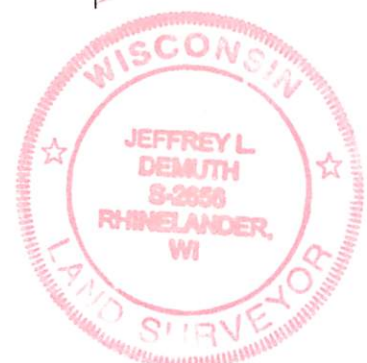
Note: I did not dig for this corner because the road surface had been recently seal coated. I did not reestablish this corner from existing witnesses because their measurements did not agree within 0.50 feet. I believe the true location to be intact and beneath the asphalt surface.

(c)(d)(e) Plan view of corner with ties to at least 4 witness monuments. If in disagreement with previously established corner, show the distances between the two corners and also indicate the ties to the disputed corner.



(i) I, Jeffrey L. DeMuth, Professional Land Surveyor #S-2656, hereby certify that the corner location on this record was perpetuated by me or under my direction and control and that this U.S. Public Land Survey Monument Record is correct and complete to the best of my knowledge and belief.

Signature  Date 09/11/2018



Index No. 3810182000