

State of Wisconsin

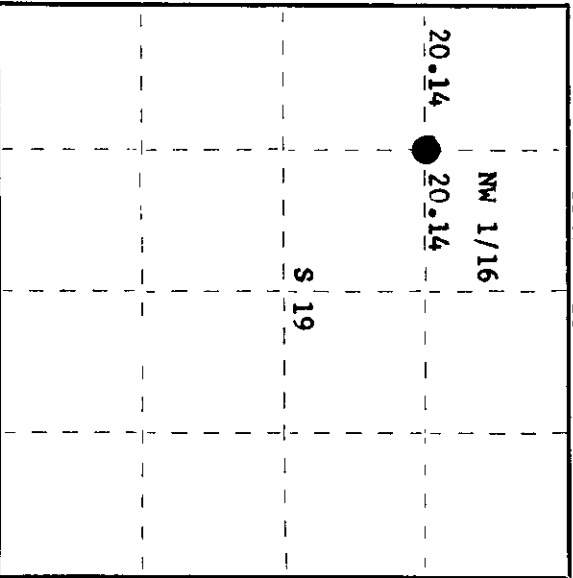
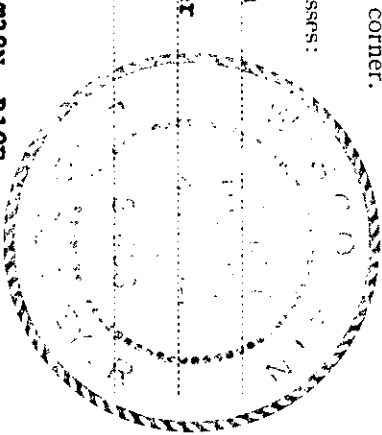
County of Oneida } ss.

I, Phillip T. Hansen, do hereby certify that on the 30th day of January, 1978, I found evidence of the NW 1/16 corner of Section 19 Township 38, North, Range 10 East, Fourth Principal Meridian, as described hereon; and that from this evidence I established a new monument and accessories as described hereon to perpetuate the original location of this corner.

Resident witnesses:

Jim Clafflin

Herb Wagoner



○ = Corner monument restored.

History of original corner establishment:

Corner established by N. Loftus, Ripco Surveyor, in 1956. Ran random line east from N 1/16 corner between Section 19 & 24, 40.27 chains to tie to NC 1/16 corner. Set NW 1/16 corner at 20.14 chains. Set iron pipe. No record of any BT's.

Description of corner evidence found:

Recovered 3/4" iron pipe with 2" brass cap, stamped:  
Also found 1" iron pipe beside it.  
Monument projects 3" above ground.

NW 1/16  
RIPCO  
S19

Recovered OBT's - Tamarack 3" N47°E, 19.0 links,  
scribed NW 1/16 BT, now dead.  
Tamarack 6" S2°W, 14.5 links,  
scribed NW 1/16 BT.

Description of monument and accessories I established to perpetuate the original location of this corner.

Left monument in place as recovered.  
Marked NBT's - Tamarack 6" N48°E, 24.6 links, scribed 1/16 BT.

Dated at Rhineland, Wis., this 3rd day of February, 1978

Signature: Phillip T. Hansen Title: Registered Land Surveyor Registration No. S-498  
(County Surveyor, Registered Land Surveyor, or other duly authorized official)

Office of Register of Deeds, County of Oneida  
I, hereby certify that the within instrument was filed in this office for record on the 6th day of February, 1978 at 9:30 o'clock A. M.

Dorcas George Kuehn  
(Register of Deeds)

By: \_\_\_\_\_ Deputy