

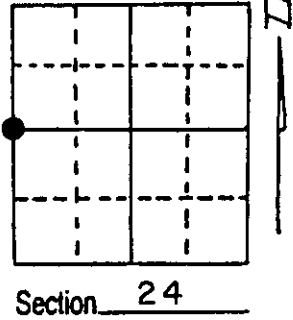
U.S. PUBLIC LAND SURVEY MONUMENT RECORD

Note: This form is intended and designed to fulfill all requirements of Wisconsin Administrative Code, Chapter A-E 7.08 U.S. Public Land Survey Monument Record (3) (a) (b) (c) (d) (e) (f) (g) (h) (i). An additional sheet may be added if necessary to conform with said requirements.

(a) Corner location: Township 38 North
 Range 10 East/West

Town/City/Village THREE LAKES

County ONEIDA



(b) (f) (g) (h) Description of monument found at this corner and if it was accepted, state all evidence (material, testimonial, occupational, plats, records, other monuments) used as a basis for accepting. If not accepted or if nothing was found, state evidence used as basis for establishing location. If reestablished through lost corner proportionate methods, indicate all monuments, distances and directions used to establish. Indicate type of monument found or set and sign post.

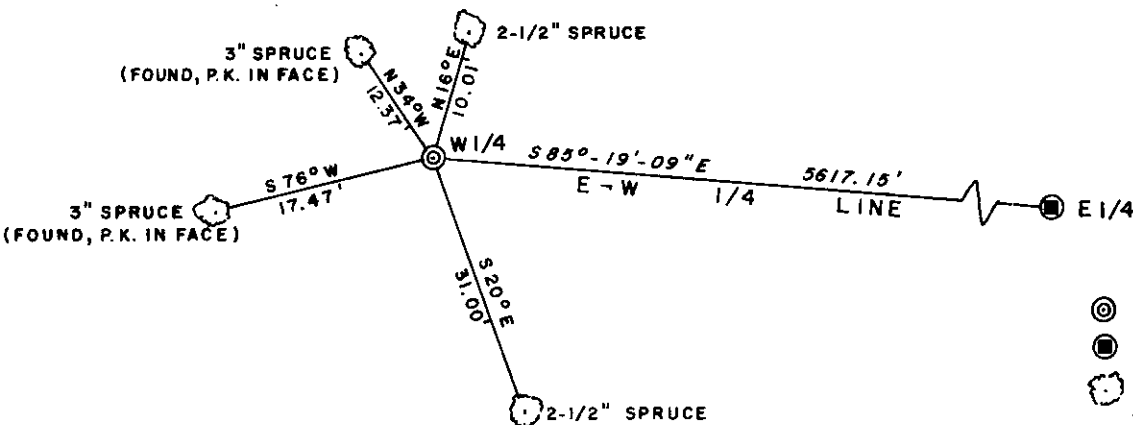
1863 - William E. Daugherty established original corner.
 B.T.'s: Hemlock 10 S65°W 23, Birch 12 N18°E 32.

1909 - D.H. Vaughan subdivides Section and finds W¹/₄ post by Dorr.
 B.T.'s: Spruce 3 N88¹/₄°E 36¹/₄, Spruce 3 North 22.

Found in place a 1¹/₂" iron pipe by 5"x5" wood post, iron pipe was used by R. Winat as W¹/₄ position, to subdivide Section 23.

Replaced 1¹/₂" iron pipe with a 2¹/₂" x 60" aluminum capped Oneida County monument. Corner accessories found and established are shown below.

(c) (d) (e) Plan view of corner with ties to at least 4 witness monuments. If in disagreement with previously established corner, show the distances between the two corners and also indicate the ties to the disputed corner.



MAGNETIC BEARINGS

- ⊙ ONEIDA COUNTY ALUMINUM MON.
- RIPCO MONUMENT
- ⊙ BEARING TREES - MEASURED TO A NAIL IN SIDE
- NO SCALE
- PLASTIC POST IS 1.0' NORTHEAST OF CORNER.

(i) I, Kip W. Soder R.L.S. 1731
 (type or print name) certify that the corner location on this record was determined by me or under my direction and control and that this U.S. Public Land Survey Monument Record is correct and complete to the best of my knowledge and belief.

Kip W. Soder 9/23/88
 Signature Date



Index No. P-21

3810232000