

CERTIFIED LAND CORNER RESTORATION

Index No. R-23

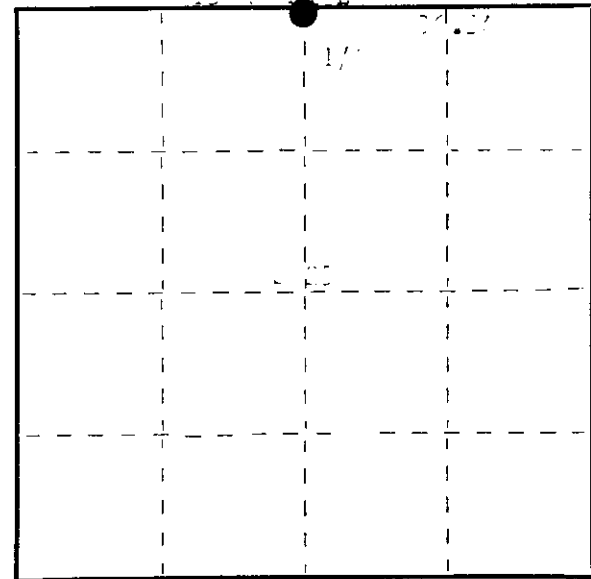
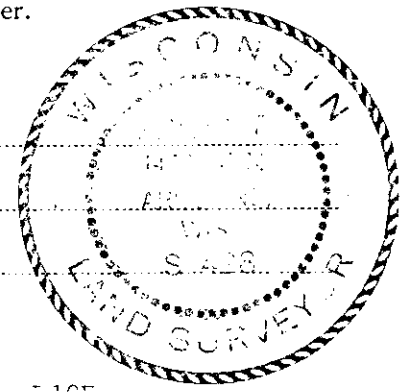
State of Wisconsin }
County of Sauk } ss.

I, Philip J. Hanan, do hereby certify that on the 19th day of December, 1978, I found evidence of the original corner of Section 25 Township 35S, North, Range 16E, Fourth Principal Meridian, as described hereon; and that from this evidence I established a new monument and accessories as described hereon to perpetuate the original location of this corner.

Resident witnesses:

John J. Miller

William J. Miller



○ = Corner monument restored.

History of original corner establishment:

Original corner established by W. J. Pugh, Deputy Surveyor, in 1880 - Section 25, Township 35S, Range 16E, 4th Principal Meridian, 1880.
Corner re-established by Philip J. Hanan, Deputy Surveyor, in 1900.
Corner re-established by Philip J. Hanan, Deputy Surveyor, in 1900.
Corner re-established by Philip J. Hanan, Deputy Surveyor, in 1900.

Description of corner evidence found:

Original corner monument found at the intersection of the center line of Section 25 and the center line of Section 26, Township 35S, Range 16E, 4th Principal Meridian, 1880.
The monument was found to be in place and in good condition.
The monument was found to be in place and in good condition.

Description of monument and accessories I established to perpetuate the original location of this corner:

Original corner monument found at the intersection of the center line of Section 25 and the center line of Section 26, Township 35S, Range 16E, 4th Principal Meridian, 1880.
The monument was found to be in place and in good condition.
The monument was found to be in place and in good condition.

Dated at Sauk, Wis., this 19th day of December, 1978.

Signature: Philip J. Hanan Title: Deputy Surveyor Registration No. 1000
(County Surveyor, Registered Land Surveyor, or other duly authorized official)

Office of Register of Deeds, County of Sauk, I hereby certify that the within instrument was filed in this office for record on the 19th day of January, 1978 at 3:00 o'clock P. M.

Sam Verage Kuehn
(Register of Deeds)

By: Joseph M. Boomer Deputy

FORM 985 W. C. MILLER CO., MILWAUKEE

U.S. PUBLIC LAND SURVEY MONUMENT RECORD

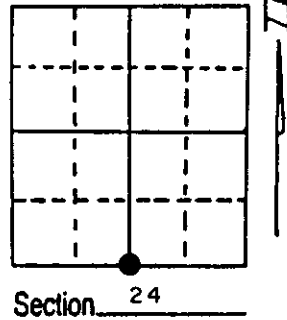
Note: This form is intended and designed to fulfill all requirements of Wisconsin Administrative Code, Chapter A-E 7.08 U.S. Public Land Survey Monument Record (3) (a) (b) (c) (d) (e) (f) (g) (h) (i). An additional sheet may be added if necessary to conform with said requirements.

(a) Corner location: Township 38 North

Range 10 East/West

Town/City/Village THREE LAKES

County ONEIDA



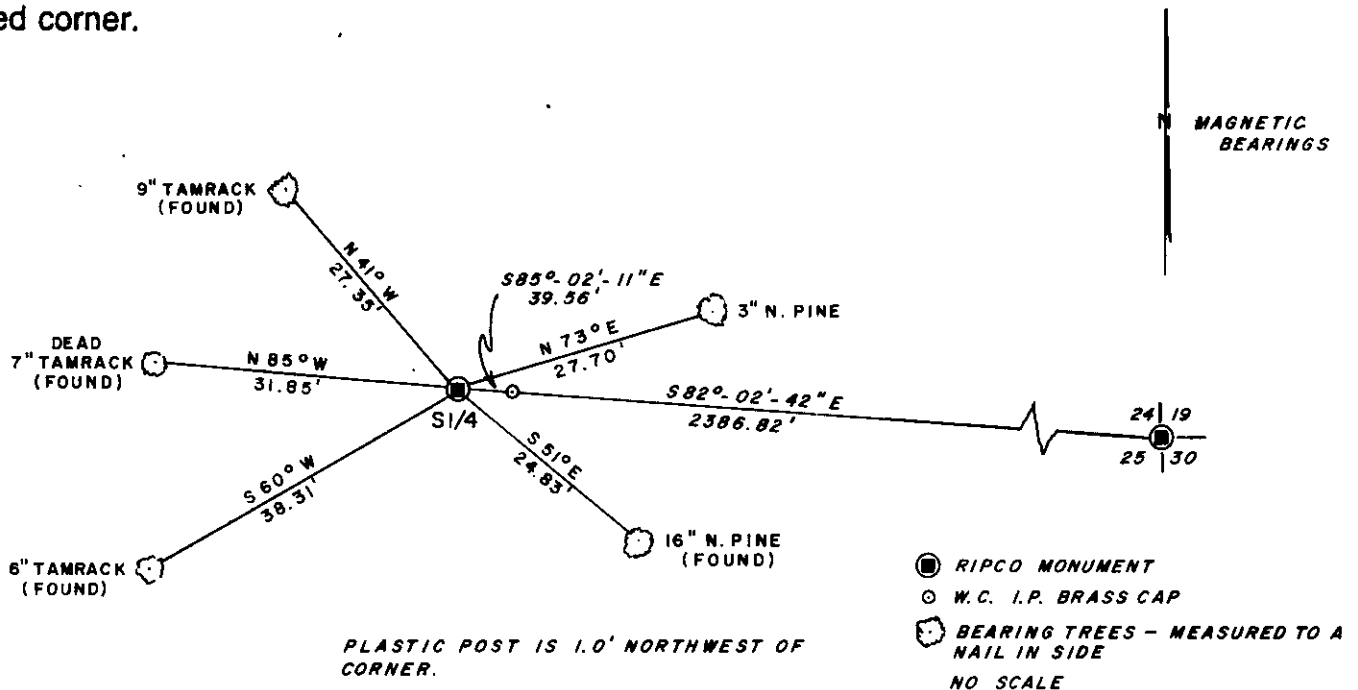
(b) (f) (g) (h) Description of monument found at this corner and if it was accepted, state all evidence (material, testimonial, occupational, plats, records, other monuments) used as a basis for accepting. If not accepted or if nothing was found, state evidence used as basis for establishing location. If reestablished through lost corner proportionate methods, indicate all monuments, distances and directions used to establish. Indicate type of monument found or set and sign post.

- 1863 - William E. Daugherty established original corner.
B.T.'s: Tamarack 8 N14°W 9, W. Pine 12 S8°W 25.
- 1909 - D.H. Vaughan states in his notes found original 1/4 Post
Also found original Pine stump.

Found in place a 1 1/2" iron pipe, Brass tablet, RIPCO monument also a 1 1/2" iron pipe, brass cap Witness corner East of S 1/4 corner.

Corner accessories found and established shown below.

(c) (d) (e) Plan view of corner with ties to at least 4 witness monuments. If in disagreement with previously established corner, show the distances between the two corners and also indicate the ties to the disputed corner.



(i) I, Kip W. Soder R.L.S. 1731
(type or print name) certify that the corner location on this record was determined by me or under my direction and control and that this U.S. Public Land Survey Monument Record is correct and complete to the best of my knowledge and belief.

Kip W. Soder 9/23/88
Signature Date

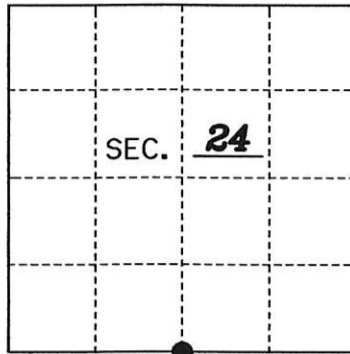


Index No. R-23

U.S. PUBLIC LAND SURVEY MONUMENT RECORD

Note: This form is intended and designed to fulfill all requirements of Wisconsin Administrative Code, Chapter A-E 7.08 U.S. Public Land Monument Record (3)(a)(b)(c)(d)(e)(f)(g)(h)(i). An additional sheet may be added if necessary to conform with said requirements. Deeds Square

(a) CORNER LOCATION: South 1/4
 Corner of Section 24
 Township 38 North, Range 10 East
 Township/City Three Lakes
 County of Oneida



REGISTER OF DEEDS OFFICE
 ONEIDA COUNTY
 FILED

 JAN 22 2021

 KYLE J. FRANSON
 REGISTER OF DEEDS

(b) HISTORY OF ORIGINAL ESTABLISHMENT
 Original Surveyor: William E. Daugherty
 Date of Survey: 1863
 Original B.T.'s: 8" Tamarack N14°W 9 lks.
12" W. Pine S8°W 25 lks.

The coordinate values shown have been determined by the average of multiple RTK GPS observations taken initially and returning to the site on a different day at a different time and taking additional multiple RTK GPS observations and averaging those with the initial observations.

County or State Plane Coordinates
 Northing 208103.924'
 Easting 321866.391'
 Datum Base WISCORS-ONEIDA GRID

NAD 83 (2011)

(b)(f)(g)(h) Description of monument found at this corner and if it was accepted, state all evidence (material, testimonial, occupational, plats, records, other monuments) used as a basis for accepting. If not accepted or if nothing was found, state evidence used as basis for establishing location. If reestablished through lost corner proportionate methods, indicate all monuments, distances and directions used to establish. Indicate type of monument and sign post found or set.

As part of an Oneida County Land Information Office contract to preserve Public Land Survey System corners in roadways that may be obliterated due to road resurfacing, I have performed the following corner maintenance as described below:

1909: D.H. Vaughan states in his notes that he recovered the original wood post with an original B.T.

December 1977: Philip Hansen recovers corner position and perpetuates corner position with a Certified Land Corner Restoration form.

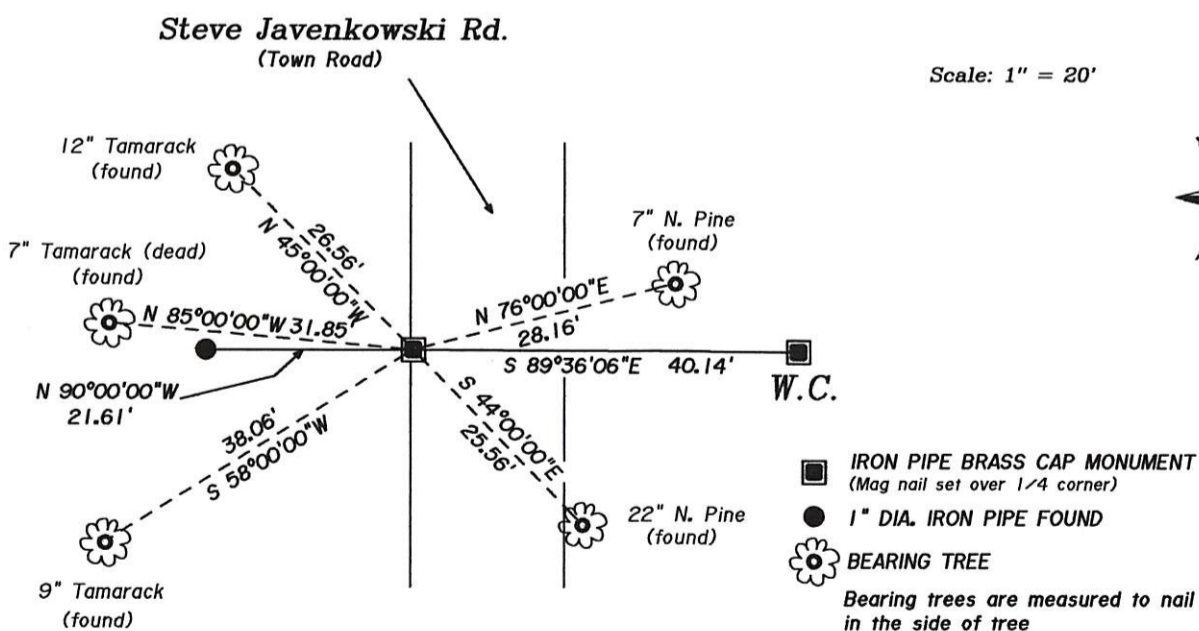
September, 1988: Kip W. Soder finds a RIPCO 1-1/2" iron pipe brass cap monument in the edge of the road bed with an Ripco iron pipe brass cap Witness Corner East of the road and prepares a U.S.P.L.S. Monument Record showing corner ties. Corner location has been used and accepted in several previous surveys.

June 3, 2019: Thomas Boettcher of Eagle Landmark Surveying recovers an iron pipe brass cap monument 12" below the surface on the west edge of the road. Monument could be leaning slightly west of the original location. Reset the broken sign post 6' west of the corner and shows the following corner ties below.

December 2019: Thomas Boettcher and Kip Soder return to the site after road resurfacing and set a magnetic P.K. nail in the new road surface from the previously tied in witnesses. Difficult area for RTK GPS.

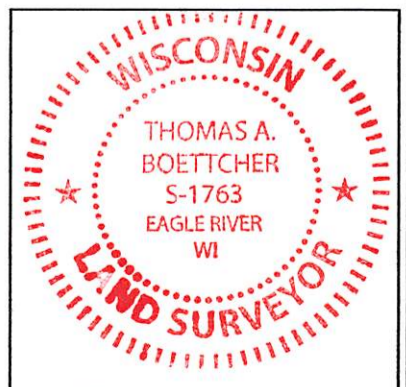
December 2020: I, Thomas Boettcher, returned to the site and found the mag nail in the new road surface. I took a series of RTK GPS observations to average with the previous observations. Another white sign post was found 20' west of the corner.

(c)(d)(e) Plan view of the corner with ties to at least 4 witness monuments. If in disagreement with previously established corner, show the distances between the two corners and also indicate the ties to the disputed.



(i) I, Thomas A. Boettcher P.L.S. No. 1763
 hereby certify that the corner location on this record was determined by me or under my direction and control and that this U.S. Public Land Survey Monument Record is correct and complete to the best of my knowledge and belief.

Signature [Signature] Date December 24, 2020



Index No. 3810240020