

U.S. PUBLIC LAND SURVEY MONUMENT RECORD

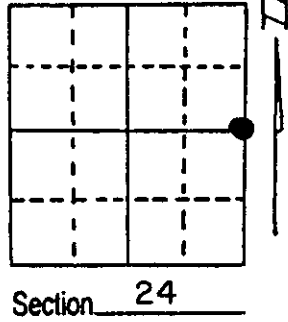
Note: This form is intended and designed to fulfill all requirements of Wisconsin Administrative Code, Chapter A-E 7.08 U.S. Public Land Survey Monument Record (3) (a) (b) (c) (d) (e) (f) (g) (h) (i). An additional sheet may be added if necessary to conform with said requirements.

(a) Corner location: Township 38 North

Range 10 East/West

Town/City/Village THREE LAKES

County ONEIDA

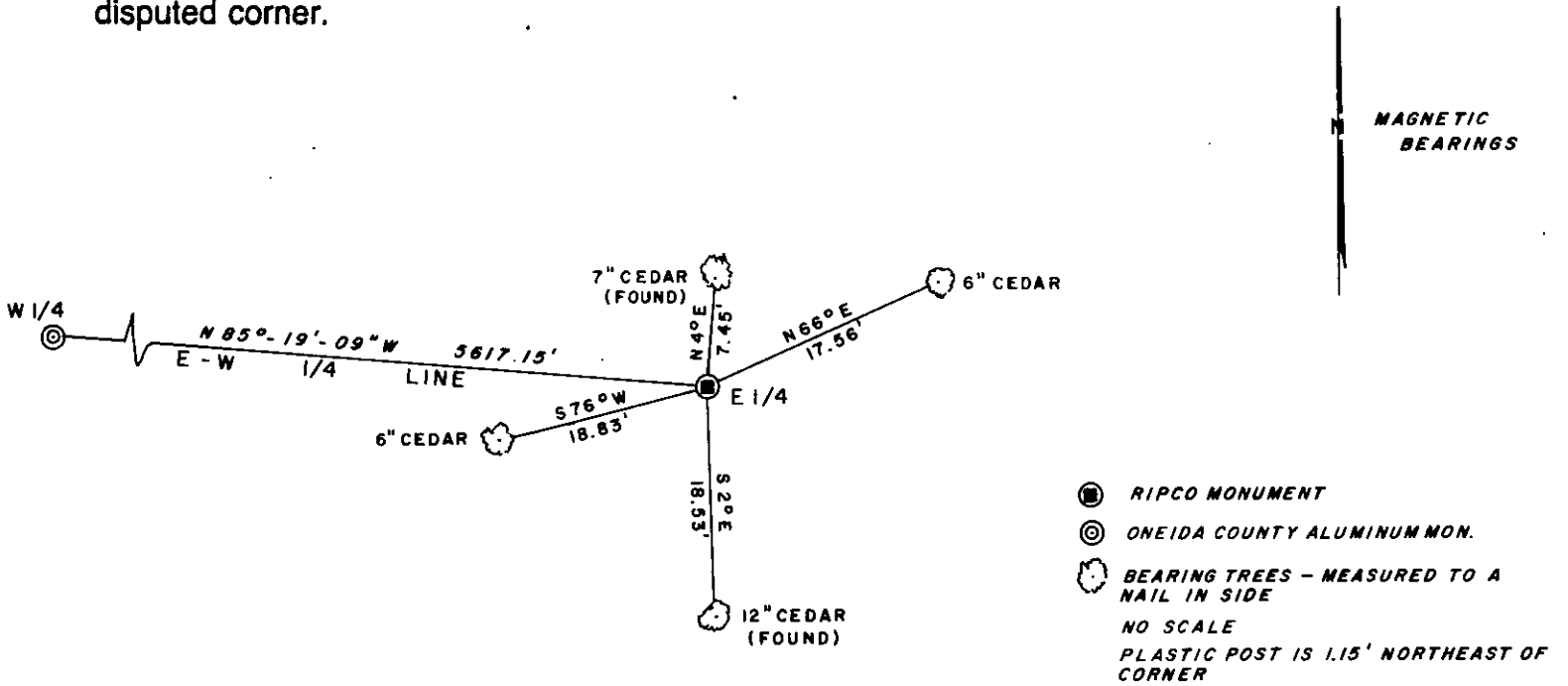


(b) (f) (g) (h) Description of monument found at this corner and if it was accepted, state all evidence (material, testimonial, occupational, plats, records, other monuments) used as a basis for accepting. If not accepted or if nothing was found, state evidence used as basis for establishing location. If reestablished through lost corner proportionate methods, indicate all monuments, distances and directions used to establish. Indicate type of monument found or set and sign post.

1859 - Hiram C. Fellows established original corner @ 40 chains North of the SE corner, B.T.'s: Tamarack 10 S82°E 4, Fir 10 N86°W 19.

1909 - D.H. Vaughan subdivides Section finds original E $\frac{1}{4}$ post, Tamarack o.k., Fir gone.
Found in place a 1 $\frac{1}{2}$ " iron pipe, Brass tablet, RIPCO monument.
Corner accessories found and established shown below.

(c) (d) (e) Plan view of corner with ties to at least 4 witness monuments. If in disagreement with previously established corner, show the distances between the two corners and also indicate the ties to the disputed corner.



(i) I, Kip W. Soder R.L.S. 1731
(type or print name) certify that the corner location on this record was determined by me or under my direction and control and that this U.S. Public Land Survey Monument Record is correct and complete to the best of my knowledge and belief.

Kip W Soder 9/23/88
Signature Date



Index No. P - 25