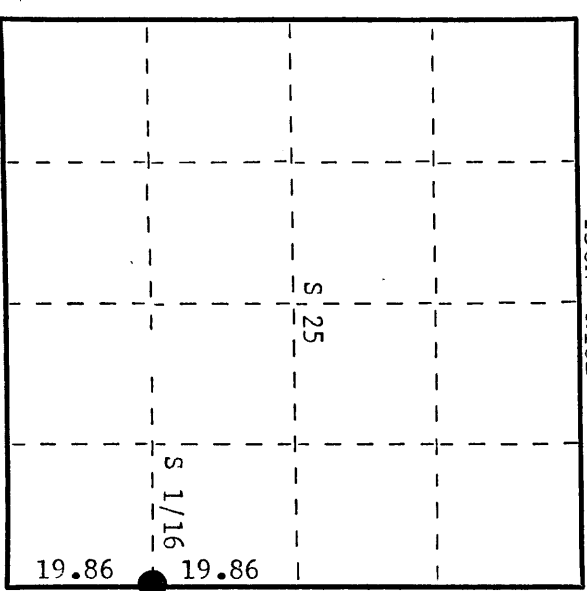
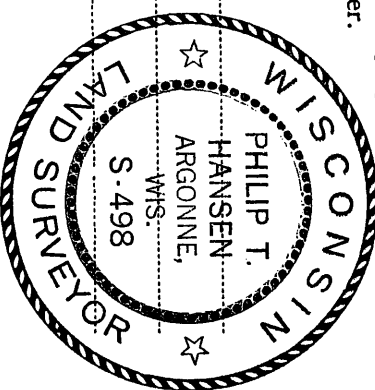


State of Wisconsin

County of Oneida } ss.

I Philip T. Hansen, do hereby certify that on the 30th day of December, 1977, I found evidence of the S 1/16 corner of Section 25 & 30 Township 38 North, Range 11 & 10 East, Fourth Principal Meridian, as described hereon; and that from this evidence I established a new monument and accessories as described hereon to perpetuate the original location of this corner.

Resident witnesses:
Jim Claffin
Herb Wagoner



○ = Corner monument restored.

History of original corner establishment:

Corner established by Goddard and crew, Ripco surveyors, in 1960. Ran random line north from SE corner 39.72 chains to close out 95 links west of E 1/4 corner. Computed bearing N 10° 01' E. Set S 1/16 corner at 19.86 chains intermediate 47.5 links east.
Marked NBT's - Maple 5" S28°E, 25 links
Maple 4" N26°W, 58½ links

Description of corner evidence found:

Recovered 3/4" iron pipe with 2" brass cap, stamped:
Monument recovered in excellent condition.
Monument projects 14" above ground.
Recovered OBT's - Maple 5" (7") S28°E, 25.0 links, scribed S 1/16 BT.
Maple 4" (5") N26°W, 58.5 links, scribed S 1/16 BT.

Description of monument and accessories I established to perpetuate the original location of this corner.

Monument left in place as recovered.
No additional accessories established.

Dated at Rhineland, Wis., this 3rd day of January, 1978.

Signature: *Philip T. Hansen* Title Registered Land Surveyor Registration No. S-498
(County Surveyor, Registered Land Surveyor, or other duly authorized official)

Office of Register of Deeds, County of Oneida
Instrument was filed in this office for record on the 18th day of January, 1978 at 10:00'clock P.M.

Doree Leverage Kuehn
(Register of Deeds)

By _____ Deputy