

U.S. PUBLIC LAND SURVEY MONUMENT LOCATION RECORD

Recorders Data

CORNER: NW Section SECTION: 32 TOWNSHIP 38 NORTH RANGE 10 EAST/WEST

FOR M.C. CORNER INDICATE: NAME OF WATERWAY N/A SECTION LINE N/A

(CITY)(VILLAGE)(TOWN) OF: Sugar Camp COUNTY OF: Oneida

Description of monument found or placed and all other evidence used as a basis for monument location; including all monuments and related measurements required if the corner location is reestablished by lost corner proportionate methods. Also indicate name of original surveyor, survey date, corner monument set and established bearing trees, witness or reference monuments with ties from available records.

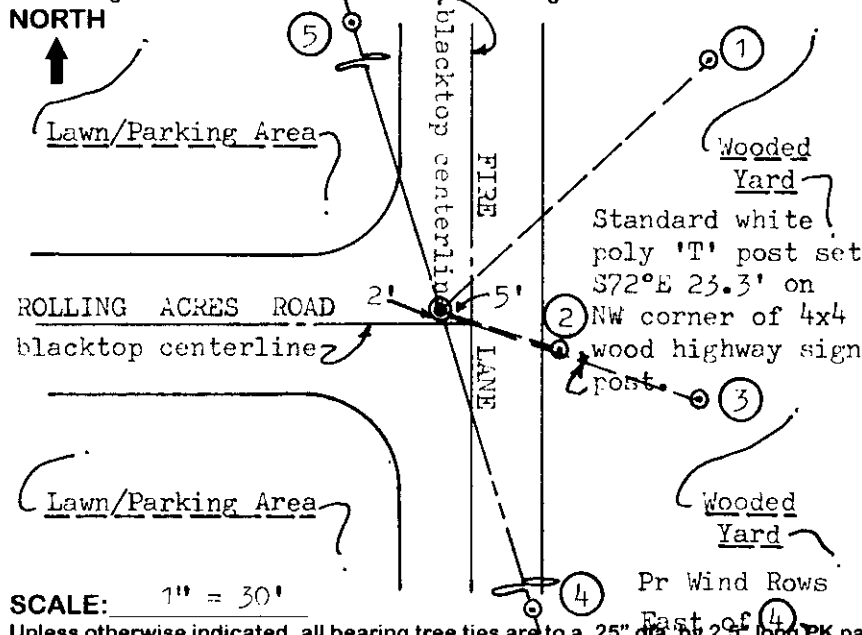
Found and accepted an old rusted 1" dia. iron pipe with uncapped top tipped South 3" below existing blacktop pavement surface at this corner location. I carefully removed the 10" long old iron pipe to reveal base of pipe hole, and reset center location with a 3/4" dia. by 12" long iron rod flush with pavement surface; I also set a 1/4" dia. by 2 1/2" long PK nail at 12" North, South, East and West of the corner center point on cardinal right lines to aid future usage.

In 1863, Daugherty/GLO set a wood post as the 1/4 corner and marked OBTs, an 8" Tamarack N62°E 6 lks and an 8" Aspen S48°W 29 lks, all of which are now obliterated within roadway area.

In 1990, T. Loftus notes a "subdivisional mon. of record" at this corner location per his Flat of Survey, filed as B-2181, Oneida County survey records.

This recovery was completed July 8, 1998, and directly witnessed by Alvin Sowinski, owner at Fire No. 5806 East of corner location, who stated to me that he remembered when Loftus used this corner monument for a survey he was doing to the North. No other corner evidence was observed or detected with metal locator within the entire 'T' roadway intersection.

Plan view map of monument location with bearing and distance ties to a minimum of four(4) described witness or reference monuments of concrete, natural stone, iron, live bearing trees or equivalent material. If applicable, also show a minimum of two(2) bearing and distance ties to any other monument found and not accepted; including the bearing and distance from the accepted monument. Indicate the basis for bearings of reference ties if not referenced to magnetic north.



WITNESS MONUMENT TIES:

- ① New BT 18" Pr N47°E 57.57'.
- ② Center of 5" OD Iron Pipe Mail Box Post in concrete, S72°E at 19.40'.
- ③ New BT 12" Spruce S71°E 42.65'; BT washer/PK not set in face.
- ④ 1" dia. by 24" long iron pipe set with standard Reference Mark cap flush S17°E 112.94', 10' West of 16" Pr on West end of South East/West wind row at field edge.
- ⑤ 1" dia. by 24" long iron pipe set with standard Reference Mark cap flush N17°W 80.29', and 3' West of a power pole.

SCALE: 1" = 30'

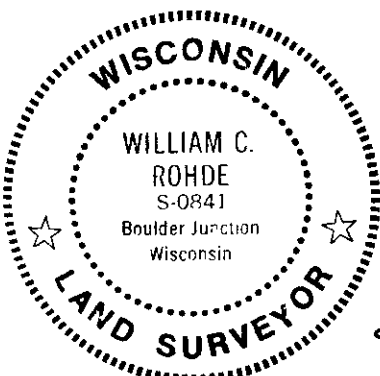
Unless otherwise indicated, all bearing tree ties are to a .25" dia. by 2.5" long PK nail with a 1.25" dia. steel washer driven into unblazed right face and a .25" dia. by 2.5" long PK nail with a 2" dia. steel washer stamped 'BT' is also driven into unblazed face of bearing tree at DBH; the basis for measured bearings is magnetic to nearest degree and all tie distances are horizontal measure to nearest 1/100th feet.

LAND SURVEYOR CERTIFICATION:

I, William C. Rohde, hereby certify that I am a duly licensed Professional Land Surveyor in Wisconsin, that this USPLS monument location was determined by me or under my direction and control, and that this U.S. Public Land Survey Monument Location Record is true and correct to the best of my knowledge and belief.

William C. Rohde Date: 7-9-98
Signature

		32	



RLS SEAL

SHEET NO. 1 OF 1

This form is intended to fulfill requirements of Chapter A-E 7.08 (3)(a)(b)(c)(d)(e)(f)(g)(h)(i) U.S. Public Land Survey Monument Location Record, Wisconsin Administrative Code. Use reverse side for geodetic location data and/or continuation purposes.

SECTION LOCATION MAP

INDEX NO. V 5
38 10 30 00 00

INDEX NO.

FEB 08 2023

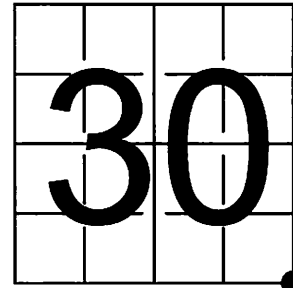
KYLE J. FRANSON
REGISTER OF DEEDS

U S PUBLIC LAND SURVEY MONUMENT RECORD - ADDENDUM

NOTE: This form is intended and designed to fulfill all requirements of Wisconsin Administrative Code, Chapter A-E 7.08 U.S. Public Land Survey Monument Record (3) (a-i)

A-E 7.08(3)(a) Identity of corner
SOUTHEAST CORNER OF SECTION 30
TOWNSHIP 38 NORTH
RANGE 10 EAST OF THE 4TH PM
TOWN OF SUGAR CAMP,
COUNTY OF ONEIDA

WISCORS - ONEIDA COUNTY
N: 203,864.607 USft (203,864.582)
E: 297,630.777 USft (297,630.714)
Datum: NAD83 (2011)
GNSS Method RTN - Direct
GNSS Control WISCORS VRS



The coordinate value shown has been verified by the average of two or more GPS observations at a markedly different time. Values shown in parenthesis, are previously published measurements.

A-E 7.08(3)(b) Description of any record evidence, monument evidence, occupational evidence, testimonial evidence, or any other material evidence.

Original Surveyor: William E. Daugherty

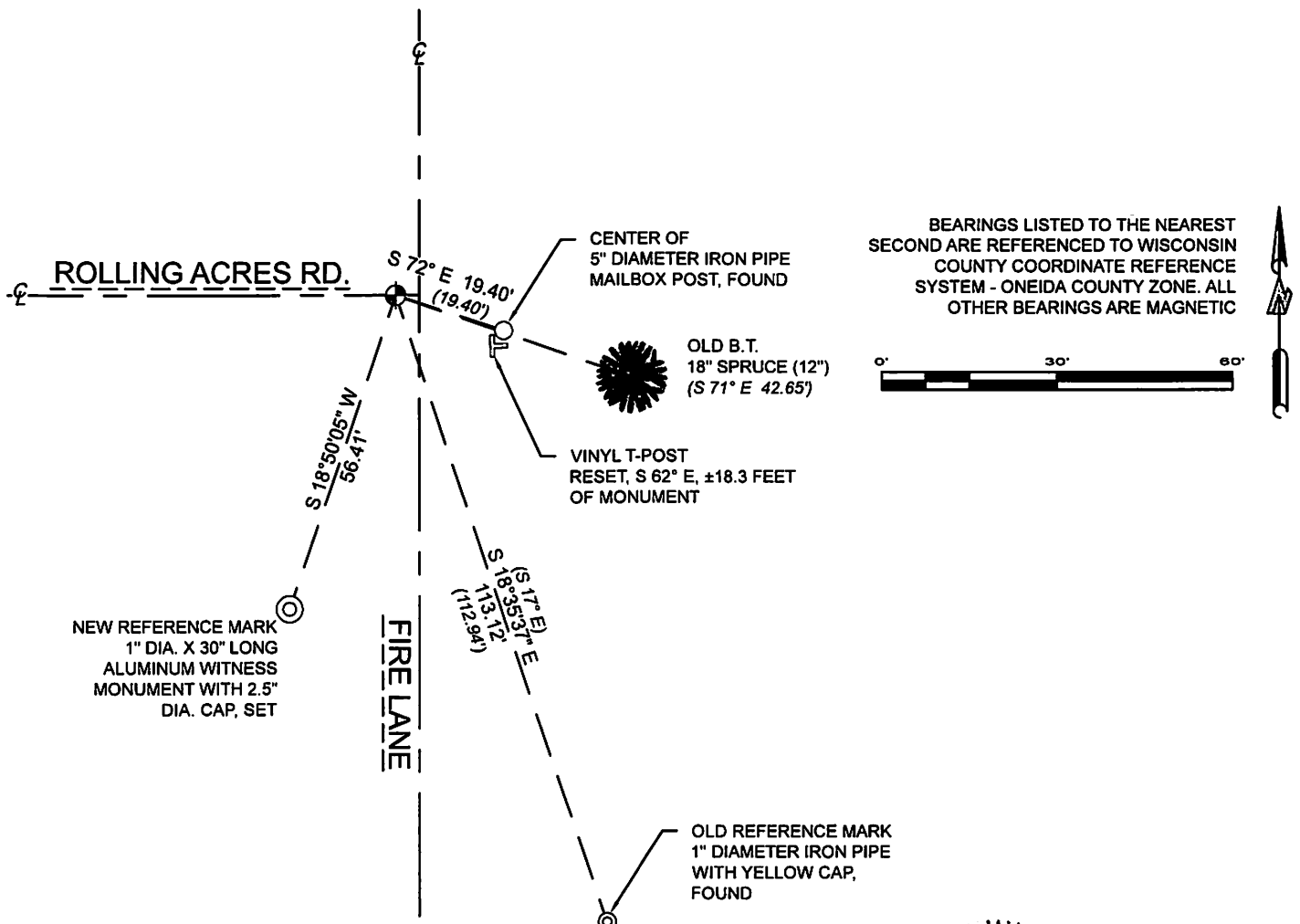
Date of Original Survey	Commenced:	September 7, 1863	Original Accessories:			
	Completed:	September 13, 1863	Tamarac	8	N 62° E	6
			Aspen	8	S 48° W	29

See Previous Monument Record: Index No. V-5 - July 8, 1998 - Surveyor 0841 - William C. Rohde - Thence:

June 01, 2022 - At the request of Oneida County Land Information, I found: a survey marker spike with a cut "+" in the top, ±4 feet west of Fire Lane centerline, and on the centerline of Rolling Acres Road. I also found 3 of Rohde's reference monuments established as noted on U.S. Public Land Survey Monument Record V-5.

A-E 7.08(3)(f) I accept this monument as a FOUND PERPETUATED LOCATION OF THE CORNER and established 1 new witness as shown below.

A-E 7.08(3)(c)(d)(e)(h) Plan view of corner with references to at least 4 witness monuments. If in disagreement with previously established corner, show the distances between the two corners and also indicate the ties to the disputed. The directions and distances to other public land survey corners used as evidence or used for determining the corner location.



A-E 7.08(3)(i) I, Jeffrey L. DeMuth, Professional Land Surveyor No. S-2656, hereby certify that the corner location on this record was determined by me or under my direction and control and that this U.S. Public Land Survey Monument Record is correct and complete to the best of my knowledge, and belief

Jeffrey L. DeMuth

January 17, 2023
DATE

SIGNATURE



V-5
43810300000