

CERTIFIED LAND CORNER RESTORATION

Index No. V-2

State of Wisconsin }
 County of Oneida } ss.

I Phillip T. Hansen, do hereby certify that on the 4th day of October, 1978, I found evidence of the W 1/16 corner of Sections 30, 31 Township 38, North, Range 10 East, Fourth Principal Meridian, as described hereon; and that from this evidence I established a new monument and accessories as described hereon to perpetuate the original location of this corner.

Resident witnesses:

Jim Clafflin

Herb Wagoner

John Masbaum

History of original corner establishment:

Corner established by N. Loftus, Ripco Surveyor. Ran random line east S 81° 18' E along highway 41.02 chains, according to Vaughan's notes, to set S 1/4 corner. Established W 1/16 at 20.51 chains intermediate. Set iron pipe in roadway for corner.

Description of corner evidence found:

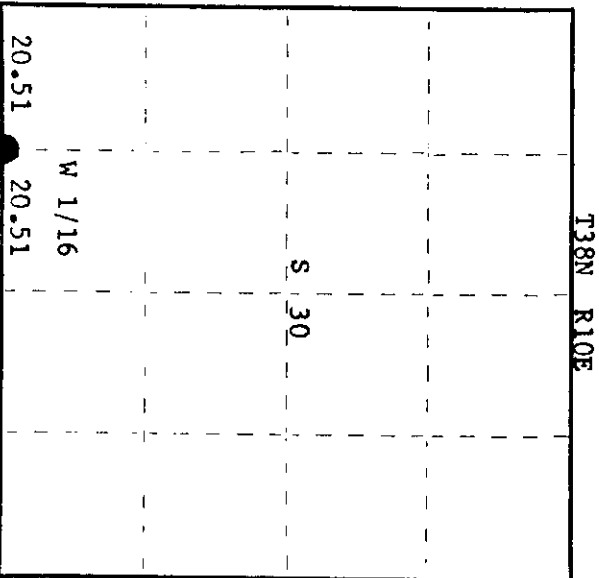
Recovered Ripco's iron pipe in roadway on north edge of Rolling Acres Road. Corner is at the intersection of Blueberry Lane to the south.

Description of monument and accessories I established to perpetuate the original location of this corner.

Set a 1" iron pipe with 2" brass cap 30 links north for witness corner. Monument projects 1 1/2" above ground. Cap stamped:

BT's - Power Pole #3810 - 30L4 - N48°W, 32 links
 Underground telephone recepticle #90E,
 N19°W, 21.5 links

T38N R10E
 S 30
 W 1/16 S+31 W.C.
 S 30 lks.



O = Corner monument restored.

Dated at Rhineland, Wis., this 4th day of October, 1978.

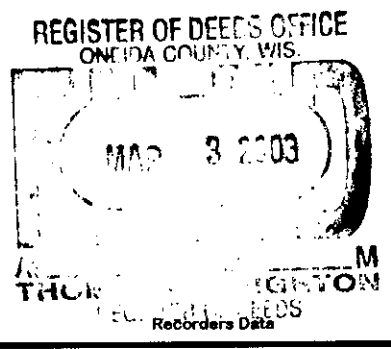
Signature Phillip T. Hansen Title Registered Land Surveyor Registration No. S-498
 (County Surveyor, Registered Land Surveyor, or other duly authorized official)

Office of Register of Deeds, County of Oneida
 Instrument was filed in this office for record on the 9th day of October, 1978
 at 1:30 o'clock P. M. I hereby certify that the within

Deborah A. Masbaum
 (Register of Deeds)

By: _____ Deputy

381030030



This form is intended to fulfill the requirements of Chapter A-E 7.08 (3)(a) thru (i) U.S. Public Land Survey Monument Location Record, Wisconsin Administrative Code. Use the reverse side of form for continuation.

U.S. PUBLIC LAND SURVEY MONUMENT LOCATION RECORD

USPLS CORNER: N1/16NW CORNER SECTION: 31 TOWNSHIP: 38 NORTH RANGE: 10 EAST
 NAME OF WATERWAY FOR M.C. CORNER : N/A SECTION LINE: N/A
 (CITY)(VILLAGE)(TOWN) OF: SUGAR CAMP COUNTY OF: ONEIDA

Description of monument found or placed and all other evidence used as the basis for monument location; including monuments and related measurements required if the corner location was reestablished by lost corner proportionate methods. Also indicate name of original surveyor, original survey date and the corner monument, bearing trees, witness or other reference monuments established; including measured bearing and distance ties, from available records.

THIS CORNER WAS REESTABLISHED WITH PRIOR VERBAL APPROVAL OF ONEIDA COUNTY SURVEYOR MICHAEL J. ROMPORTL DURING THE REESTABLISHMENT OF THE NORTH 1/4 CORNER OF SECTION 31, T38N, R10E.

This corner was last referenced for record by Philip T. Hansen/RLS 498 in 1978 per his U.S. Public Land Survey Corner record filed October 9, 1978 in Oneida County records., which should be referred to for historical documentation.

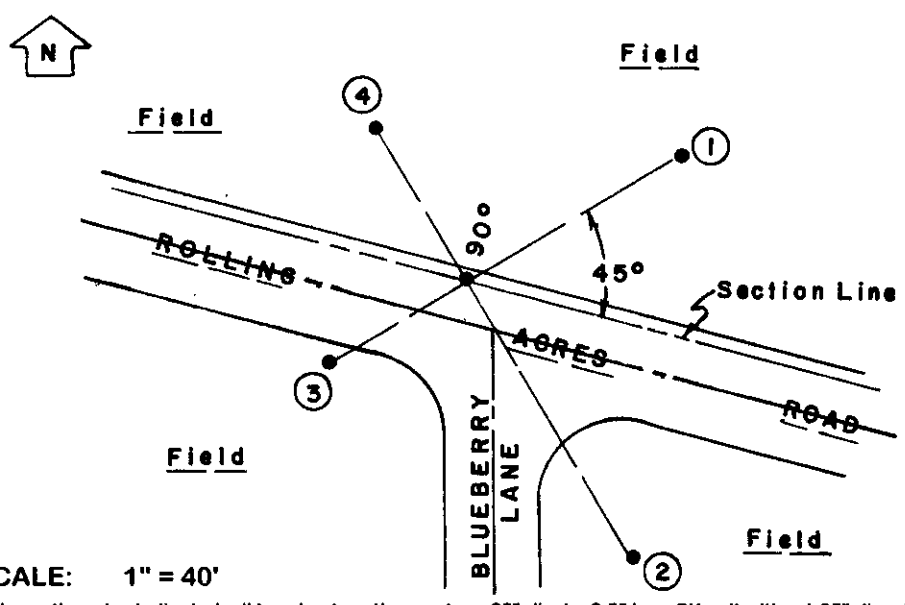
I could not find any corner monument evidence nor references noted by Hansen in 1978, so I reestablished the corner midway on a right line by measured distances between the NW corner and the North 1/4 corner of Section 31, per sketch on reverse, as had been previously done by C.D. Vaughan in 1924 and noted accordingly by Norman Loftus/RLS 289 in 1956 and by Hansen in 1978; however, this corner should have been previously reestablished by proportional measure as Section 31 is fractional by original government survey!

I monumented the reestablished corner with a 1/2" dia. by 4.5" long tapered stainless steel pin with geared top set flush in existing blacktop pavement, which falls 8' North and 5' West of the intersection of roadway at centerlines at existing E/W & S 'T' roadway intersection ; and I set a standard white poly 'T' marker post 14.5' North of the corner.

I did find older brass capped iron pipe set by Hansen in 1978 bent and flat on grade North of the 'T' roadway intersection.

This recovery completed September 18, 2002; there were no direct witnesses other than vehicle drive-bys.

Plan view map of monument location with bearing and distance ties to a minimum of four(4) described witness or reference monuments of concrete, natural stone, iron, live bearing trees or equivalent material. If applicable, also show a minimum of two(2) bearing and distance ties to any other monument found and not accepted; including the bearing and distance from the accepted monument.



- WITNESS MONUMENT TIES:**
- ① 5/8" dia. by 24" long rebar set with yellow poly RM cap 6" below grade N59°E 51.45'.
 - ② 5/8" dia. by 24" long rebar set with yellow poly RM cap flush S31°E 67.90'.
 - ③ 5/8" dia. by 24" long rebar set with yellow poly RM cap 6" below grade S59°W 32.65'.
 - ④ 5/8" dia. by 24" long rebar set with yellow poly RM cap flush N31°W 35.90'.
- Right lines thru corner between rebar reference monuments are at 90° to each other & 45° from section line.

SCALE: 1" = 40'

Unless otherwise indicated, all bearing tree ties are to a .25" dia. by 2.5" long PK nail with a 1.25" dia. steel washer driven into unblazed right face and a .25" dia. by 2.5" long PK nail with a 2" dia. steel washer stamped BT is also driven into unblazed face of bearing tree at DBH; the basis for measured bearings is by compass to nearest degree and all tie distances are measured horizontal by steel tape corrected to nearest 1/100th feet at standard temperature of 68° F.

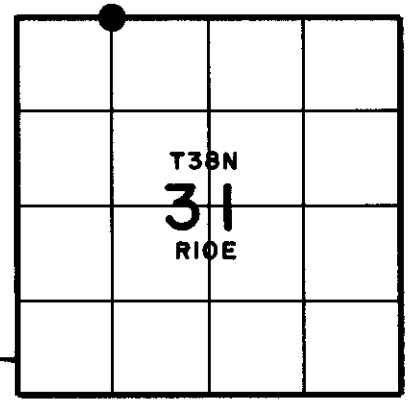
RLS SEAL:



LAND SURVEYOR CERTIFICATE:

I, William C. Rohde, hereby certify that I am duly licensed as a Professional Land Surveyor in the State of Wisconsin; that this USPLS monument location was determined by me and/or under my direct supervision and control; and that this U.S. Public Land Survey Monument Location Record is true and correct to the best of my knowledge and belief.

Signed *William C. Rohde*
 William C. Rohde RLS 841

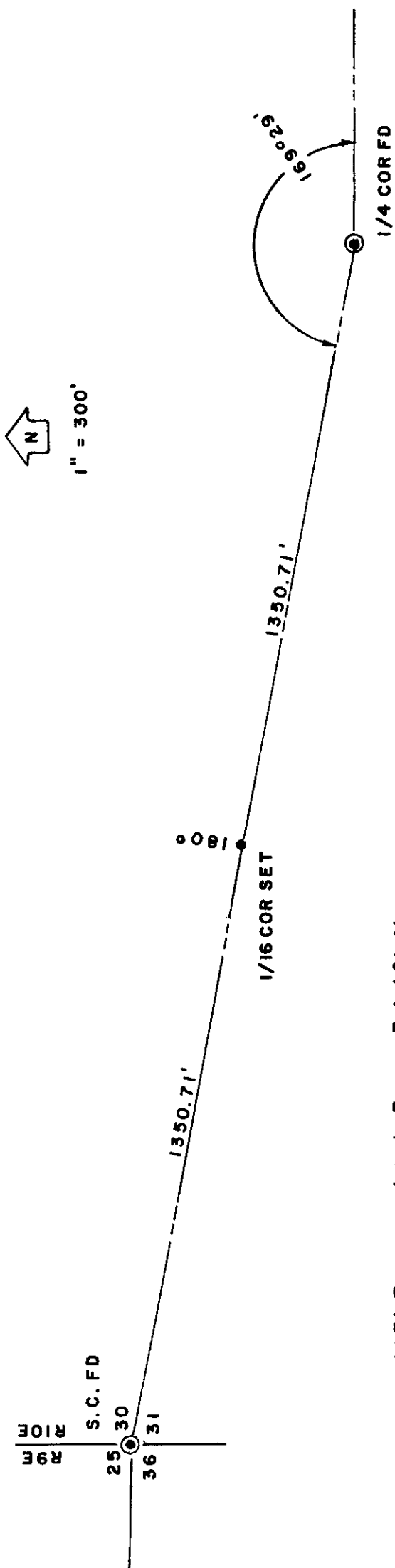


SECTION LOCATION MAP INDEX NO. V 2

Date Signed: March 1, 2002

3810300030

Stock No. 26273



NOTE: Traverse data by Topcon Total Station.