

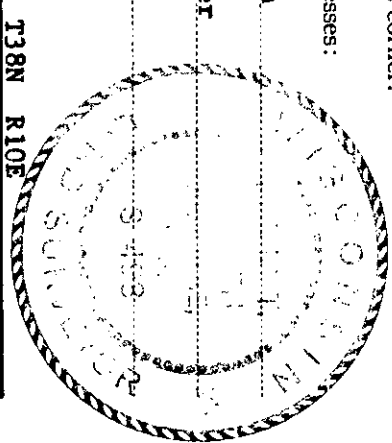
CERTIFIED LAND CORNER RESTORATION

Index No. U-2

State of Wisconsin }
County of Oneida } ss.

I Phillp T. Hansen, do hereby certify that on the 20th day of February, 1978, I found evidence of the SW 1/16 corner of Section 30 Township 38, North, Range 10 East, Fourth Principal Meridian, as described hereon; and that from this evidence I established a new monument and accessories as described hereon to perpetuate the original location of this corner.

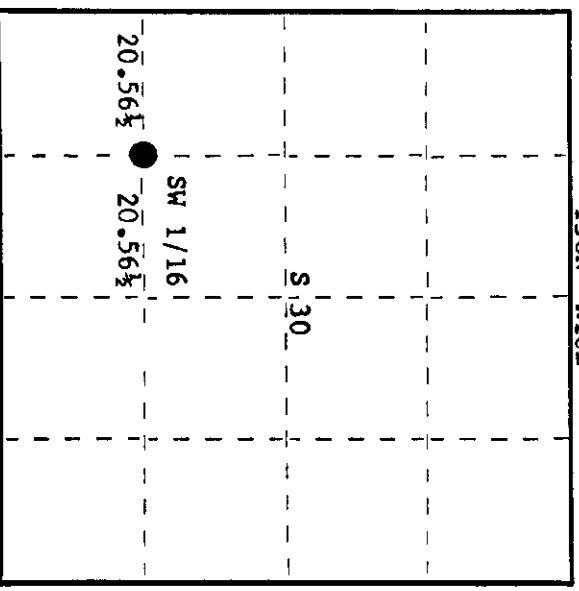
Resident witnesses:
Jim Clafflin
Herb Wagoner



History of original corner establishment:
Corner established by N. Loftus, Ripco Surveyor, in 1956.
Corner established by running random N 82° 15' W from SC 1/16 41.13 chains to close out 70 links north of S 1/16 corner on west line.
Set SW 1/16 at 20.56½ chains intermediate on corrected line.
Marked NBT - black spruce 4" N58°W, 87½ links
Set 2" iron pipe in fence line.

Description of corner evidence found:
Recovered a 2" iron pipe in N-S fence line with a 3/4" iron pipe with 2" square brass cap beside it. Monument recovered in good condition.
Recovered OBT - black spruce 4" (6") N58°W, 87.5 links (now dead), scribbling not legible.
Monument projects 16" above ground. Cap stamped: SW 1/16 S30
RIPCO

Description of monument and accessories I established to perpetuate the original location of this corner.
Monument left in place as recovered.
Marked NBT's - red pine 6" N13°E, 30.0 links, scribed 1/16 BT.
red pine 6" N58°E, 30.8 links, scribed 1/16 BT.



○ = Corner monument restored.

Dated at Rhineland, Wis., this 6th day of March, 1978

Signature Phillp T. Hansen Title Registered Land Surveyor Registration No. S-498
(County Surveyor, Registered Land Surveyor, or other duly authorized official)

Office of Register of Deeds, County of Oneida
Instrument was filed in this office for record on the 13th day of March, 1978
at 2:30 o'clock P. M. I hereby certify that the within

Doris George Kuehn
(Register of Deeds)

By _____ Deputy

810 30/030