

CERTIFIED LAND CORNER RESTORATION

Index No. X-5

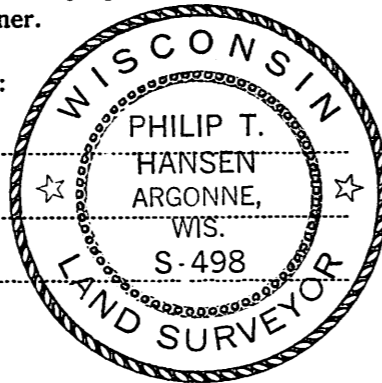
State of Wisconsin }
County of Oneida } ss.

I Philip T. Hansen, do hereby certify that on the 20th day of September, 19 77, I found evidence of the Quarter corner of Section 31 & 32 Township 38, North, Range 10 East, Fourth Principal Meridian, as described hereon; and that from this evidence I established a new monument and accessories as described hereon to perpetuate the original location of this corner.

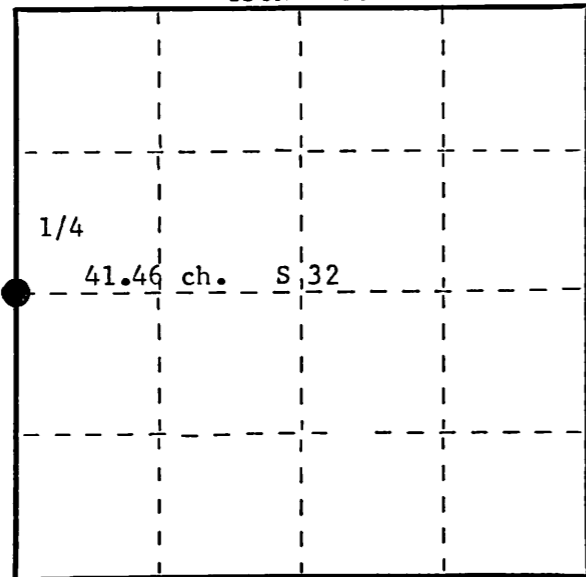
Resident witnesses:

Jim Claflin

Herb Wagoner



T38N R10E



○ = Corner monument restored.

History of original corner establishment:

Corner established by N. Loftus, Ripco Surveyor. Ran random line west from recovered 1/4 corner between Section 32 - 33 through C 1/4 corner established by B.F. Dorr a distance of 41.46 chains to 1/4 corner between Section 31 & 32.

Marked BTs - Tamarack 6" S23°E, 36 links,
Tamarack 6" N65°E, 25 links.

Description of corner evidence found:

Recovered Ripco's W.C. on east side of highway, 10 links east of true corner.
Recovered a 3/4" iron pipe 24" long, badly bent, for true corner.
Recovered OBTs - Tamarack 6" S23°E, 36.0 links (36.6 links).
Tamarack 6" (8") N65°E, 25.0 links.

Description of monument and accessories I established to perpetuate the original location of this corner.

Replaced bent true corner with 1" iron pipe, 12" long, driven below surface of east shoulder.
W. Corner, 2" iron pipe with 3" brass cap, stamped:
Marked NBT - Tamarack 7" N52°E, 36.2 links, scribed 1/4 BT.

T38N R10E
1/4
S31 | S32
Corner
10 lks. West
RIPCO

Dated at Rhineland, Wis., this 27th day of September, 19 77

Signature Philip T. Hansen Title Registered Land Surveyor Registration No. S-498
(County Surveyor, Registered Land Surveyor, or other duly authorized official)

Office of Register of Deeds, County of Oneida, I hereby certify that the within instrument was filed in this office for record on the 12th day of October, 19 77 at 9:15 o'clock a M.

Doris Verage Kuehn
(Register of Deeds)

By.....Deputy

FORM 985 H. C. MILLER CO., MILWAUKEE

38103/2000

FEB 08 2023

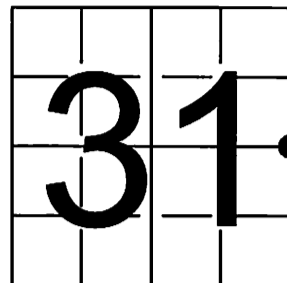
KYLE J. FRANSON
REGISTER OF DEEDS

U S PUBLIC LAND SURVEY MONUMENT RECORD - ADDENDUM

NOTE: This form is intended and designed to fulfill all requirements of Wisconsin Administrative Code, Chapter A-E 7.08 U.S. Public Land Survey Monument Record (3) (a-i)

A-E 7.08(3)(a) Identity of corner
EAST 1/4 CORNER OF SECTION 31
TOWNSHIP 38 NORTH
RANGE 10 EAST OF THE 4TH PM
TOWN OF SUGAR CAMP,
COUNTY OF ONEIDA

WISCORS - ONEIDA COUNTY
N: 201,201.891 USft (201,202.149)
E: 297,616.568 USft (297,616.256)
Datum: NAD83 (2011)
GNSS Method RTN - Direct
GNSS Control WISCORS VRS



The coordinate value shown has been verified by the average of two or more GPS observations at a markedly different time. Values shown in parenthesis, are previously published measurements.

A-E 7.08(3)(b) Description of any record evidence, monument evidence, occupational evidence, testimonial evidence, or any other material evidence.

Original Surveyor: William E. Daugherty

Date of Original Survey	Commenced:	September 7, 1863	Original Accessories:			
	Completed:	September 13, 1863	Tamarac	6	N 81° W	6
			Tamarac	6	S 78° E	8

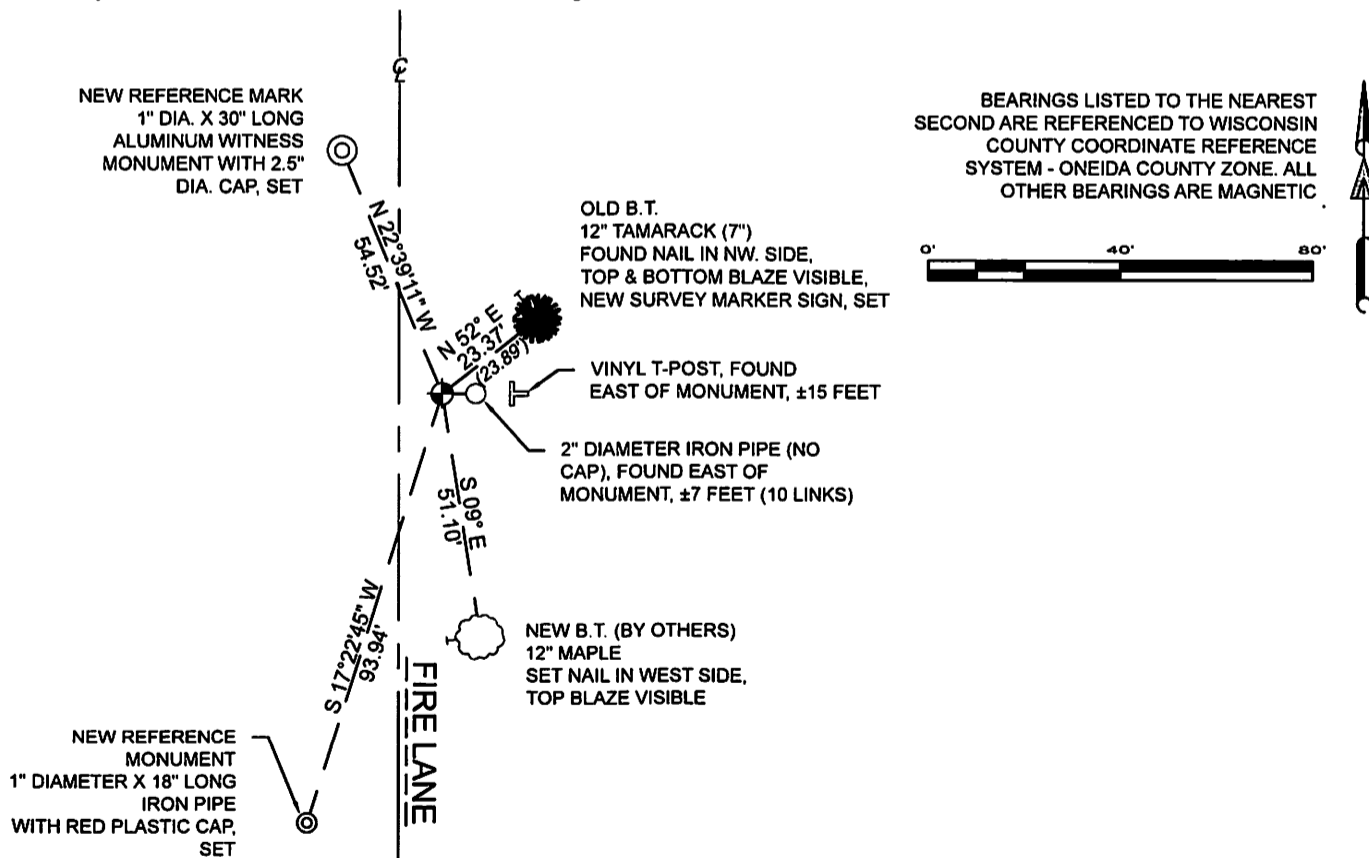
See Previous Monument Record: Index No. X-5 - September 27, 1977 - Surveyor 498 - Philip T. Hansen - Thence:

December 15, 1997 - Surveyor 1523 - Todd J. Loftus - indicates this position as "see land corner restoration sheets" on O.C.S. Map L1529.
January 9, 1998 - Surveyor 1523 - Todd J. Loftus - indicates this position as "subdivisional monument found" on O.C.S. Map B3957.
August 14, 2007 - Surveyor 2697 - Jeffrey D. Anderson - indicates this position as "1" dia. iron pipe found" on O.C.S. Map A1958.
October 15, 2008 - Surveyor 2697 - Jeffrey D. Anderson - indicates this position as "1" dia. iron pipe found" on O.C.S. Map A2184.
October 20, 2008 - Surveyor 2697 - Jeffrey D. Anderson - indicates this position as "1" dia. iron pipe found" on O.C.S. Map A2183.
October 19, 2009 - Surveyor 2697 - Jeffrey D. Anderson - indicates this position as "1" dia. iron pipe found" on O.C.S. Map A2348.
June 25, 2020 - Surveyor 1523 - Todd J. Loftus - indicates this position as "1" iron pipe" on Oneida Co. Map B8200.

June 01, 2022 - At the request of Oneida County Land Information, I found: a 1" diameter iron pipe, ±9 feet east of Fire Lane centerline. I also found 2 of Hansen's reference monuments established as noted on U.S. Public Land Survey Monument Record X-5.

A-E 7.08(3)(f) I accept this monument as a FOUND PERPETUATED LOCATION OF THE CORNER and established 3 new witness as shown below.

A-E 7.08(3)(c)(d)(e)(h) Plan view of corner with references to at least 4 witness monuments. If in disagreement with previously established corner, show the distances between the two corners and also indicate the ties to the disputed. The directions and distances to other public land survey corners used as evidence or used for determining the corner location.

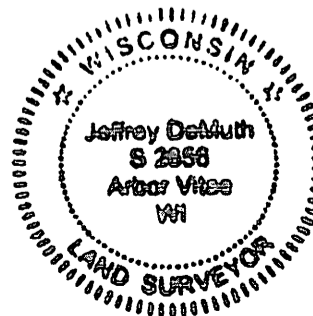


A-E 7.08(3)(i) I, Jeffrey L. DeMuth, Professional Land Surveyor No. S-2656, hereby certify that the corner location on this record was determined by me or under my direction and control and that this U.S. Public Land Survey Monument Record is correct and complete to the best of my knowledge, and belief

Jeffrey L. DeMuth

SIGNATURE

January 17, 2023
DATE



X-5

43810312000