

CERTIFIED LAND CORNER RESTORATION

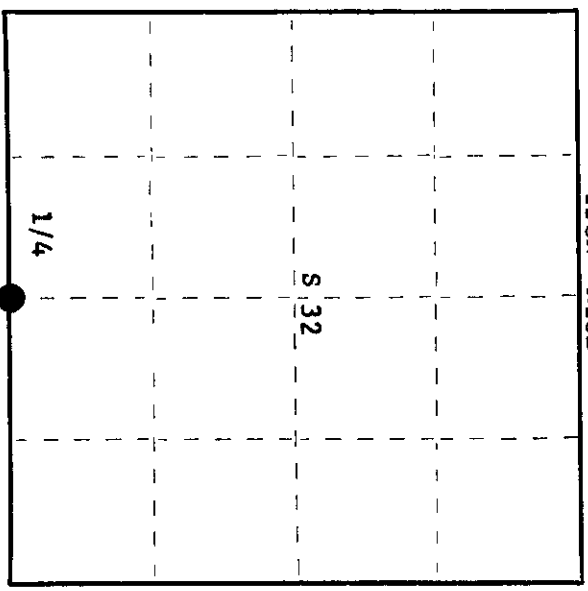
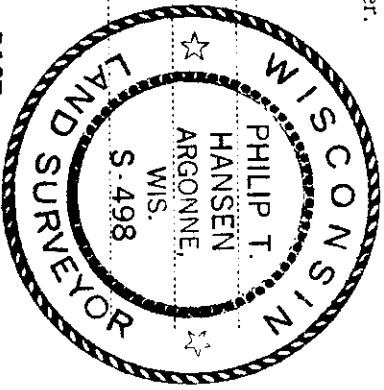
Index No. **2-7**

State of Wisconsin

County of Oneida } ss.

I Phillip T. Hansen, do hereby certify that on the 2nd day of May, 1978, I found evidence of the Quarter corner of Sections 5 & 32 Township 37 & 38, North, Range 10 East, Fourth Principal Meridian, as described hereon; and that from this evidence I established a new monument and accessories as described hereon to perpetuate the original location of this corner.

Resident witnesses:
Jim Clafflin
Herb Wagoner



○ = Corner monument restored.

History of original corner establishment:

Original corner established by H.C. Fellows, Deputy Surveyor, in 1860 from which tamarack 6" bears N62°E, 16 links and tamarack 8" bears S½°E, 69 links.

In 1959 N. Loftus, Ripco surveyor, ran S 2° 14' E on corrected bearing from Dorr's C 1/4 corner 38.44 chains to re-establish 1/4 corner.

Marked NBT's - Maple 4" N88°W, 25 links
Ash 7" N38°E, 28 links

Description of corner evidence found:

Recovered a 2" iron pipe with a 3" squared brass cap, stamped: Projects 24" above ground.

Recovered OBT's -
Maple 4" (5") N88°W (N80°W) 25 links.
Ash 7" N38°E (N33°E) 28 links (27.3 links)
now a stump scribed 1/4 S33 BT.

T38N R10E
1/4 S 32
T37N R10E
RIPCO

Description of monument and accessories I established to perpetuate the original location of this corner.

NBT's - Maple 7" N43°E, 33.5 links
Black Spruce 5" N28°E, 4.5 links
Black Spruce 5" S14°E, 28.2 links
all scribed 1/4 BT

Dated at Rhinelander, Wis., this 18th day of May, 1978

Signature Phillip T. Hansen Title Registered Land Surveyor Registration No. S-498
(County Surveyor, Registered Land Surveyor, or other duly authorized official)

Office of Register of Deeds, County of Oneida
at 100 o'clock P. M. I hereby certify that the within instrument was filed in this office for record on the 2nd day of May, 1978

Dorcas Lange Fusterman
(Register of Deeds)

By: _____ Deputy

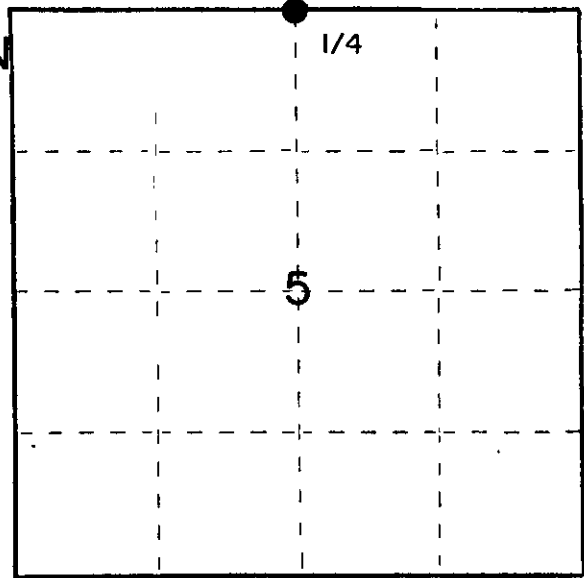
U. S. PUBLIC LAND SURVEY MONUMENT RECORD

INSTRUCTIONS :

This record shall show the location of the corner and shall include all of the following nine elements (a through i).

- (a) Identify the corner by reference to the U.S. public land survey system.
 ○ = Corner monument restored.

**T 38 & 39N
 RIOE**



- (b) Describe any record evidence, monument evidence, occupational evidence, testimonial evidence or any other material evidence you considered, and whether the monument was found or placed.

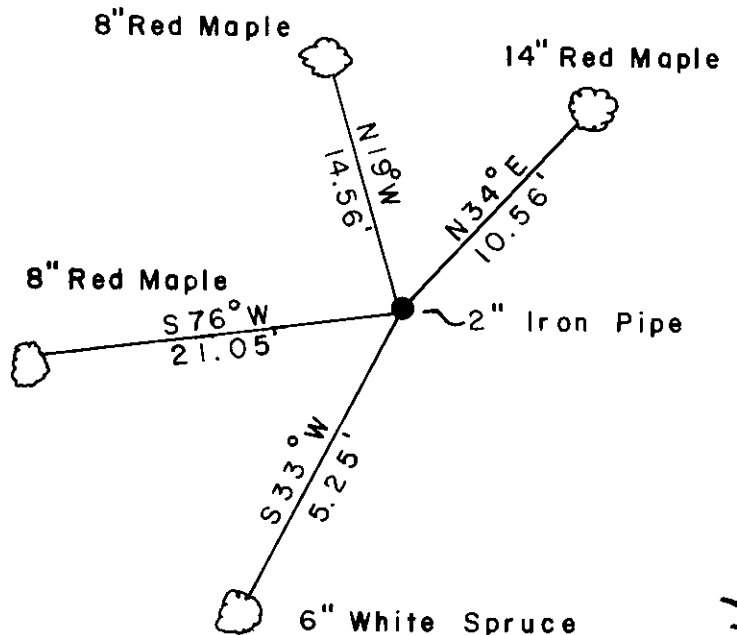
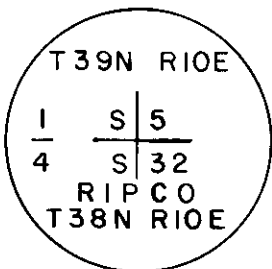
Recovered R.I.P.CO 2" iron pipe with 3" diameter aluminum cap. (Note cap stamped wrong). Found a very old rotted post lying beside monument, also a 4"x4" cedar post set beside monument.

Recovered old BTs.

Pine stump	N70E	18.05'	to face. Scribe marks visible.
Maple 14"	N34E	10.56'	
Maple 8"	N19W	14.56'	

- (c) In the plan view drawing below, provide reference ties to at least 4 witness monuments, or, if the location is within a municipality, to at least 2 witness monuments. (Witness monuments shall be made of concrete, natural stone, iron or other equally durable material.) Describe witness monuments.

- (d) Show a plan view drawing depicting the relevant monuments and reference ties which is sufficient in detail to enable accurate relocation of the corner monument if the corner monument is disturbed. Indicate north.

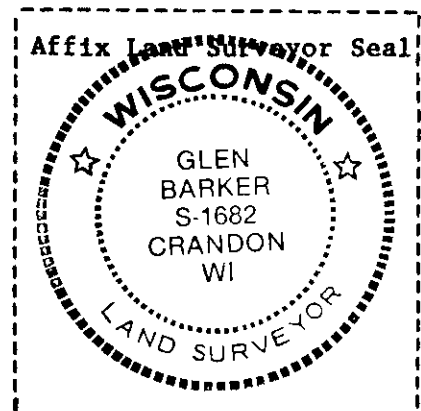
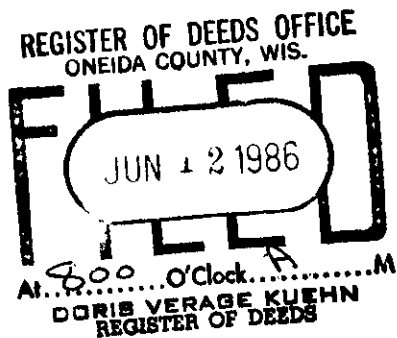


(e) Describe any material discrepancy between the location of the corner as restored or reestablished and the location of that corner as previously restored or reestablished by distance and direction. Show the discrepancy on the plan view drawing under (d), above. Show the distances between the corner as previously restored or reestablished and (1) the corner as restored or reestablished, and (2) to at least 2 of the witness monuments shown on the drawing in (d), above.

(f) Was the corner restored through acceptance of (1) an obliterated evidence location, or, (2) a found perpetuated location?

Perpetuated location.

(g&h) Was the corner reestablished through lost corner proportionate methods? If so, show the method, including the directions and distances to other public land survey corners used as evidence or used for proportioning in determining the corner location?



(i) I, Glen Barker
(type or print name) certify that the corner location shown on this record was determined by me or under my direction and control and that this U.S. Public Land Survey Monument Record is correct and complete to the best of my knowledge and belief.

Glen Barker
Signature

11/12/85
Date