

CERTIFIED LAND CORNER RESTORATION

Index No. **W-6**

State of Wisconsin

County of Oneida } ss.

I Phillip T. Hansen, do hereby certify that on the 9th day of March, 1978, I found evidence of the NW 1/16 corner of Section 32

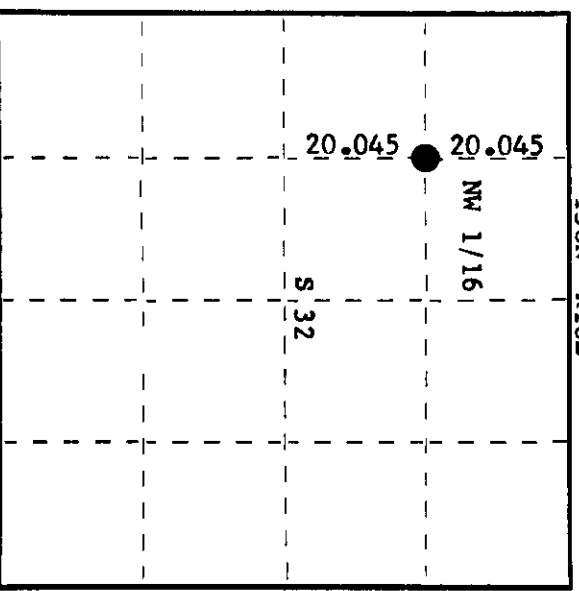
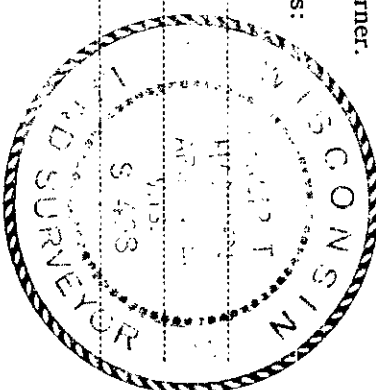
Township 38, North, Range 10 East, Fourth Principal Meridian,

as described hereon; and that from this evidence I established a new monument and accessories as described hereon to perpetuate the original location of this corner.

Resident witnesses:

Jim Claflin

Herb Wagoner



○ = Corner monument restored.

History of original corner establishment:

Corner established by Goddard and crew, Ripco surveyors, in 1959. Ran random line from previously re-established WC 1/16 bearing 357° 52' magnetic, 40.09 chains to close out 28 links west of W 1/16 corner, north line. Corrected bearing N 1° 44' W. Set NW 1/16 at 20.045 chains intermediate. Marked NBT - aspen 9" N15°E, 15 links, not scribed.

Description of corner evidence found:

Recovered 3/4" iron pipe with 2" square brass cap in good condition, projecting 16" above ground. Cap stamped:

Recovered OBT - aspen 9" N15°E, 15 links (now dead) our bearing N35°E, distance O.K. NW 1/16 + S32 RIPCO

Description of monument and accessories I established to perpetuate the original location of this corner.

Monument left in place as recovered. Marked NBT's - cherry 6" N89°W, 33.5 links aspen 6" S24°W, 27.0 links both scribed 1/16 BT.

Dated at Rhineland, Wis., this 13th day of March, 1978

Signature Phillip T. Hansen Title Registered Land Surveyor Registration No. S-498  
(County Surveyor, Registered Land Surveyor, or other duly authorized official)

Office of Register of Deeds, County of Oneida. I hereby certify that the within instrument was filed in this office for record on the 3th day of April, 1978 at 2:30 o'clock P. M.

Doris George Kuehn  
(Register of Deeds)

By \_\_\_\_\_ Deputy

810-323030