

CERTIFIED LAND CORNER RESTORATION

Index No. Z-11

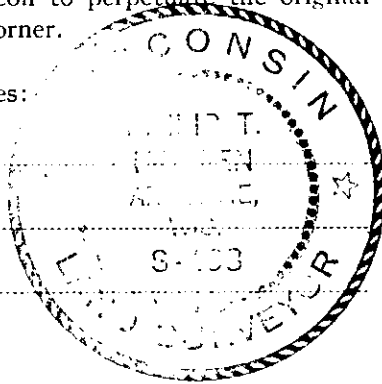
State of Wisconsin }  
County of Cneida } ss.

I, Philip T. Hansen, do hereby certify that on the 13th day of November, 1979, I found established ~~corner of~~ the Quarter corner of Sections 33 and 4 Township 37 E 38, North, Range 10 East, Fourth Principal Meridian, as described hereon; and that from this evidence I established a new monument and accessories as described hereon to perpetuate the original location of this corner.

Resident witnesses:

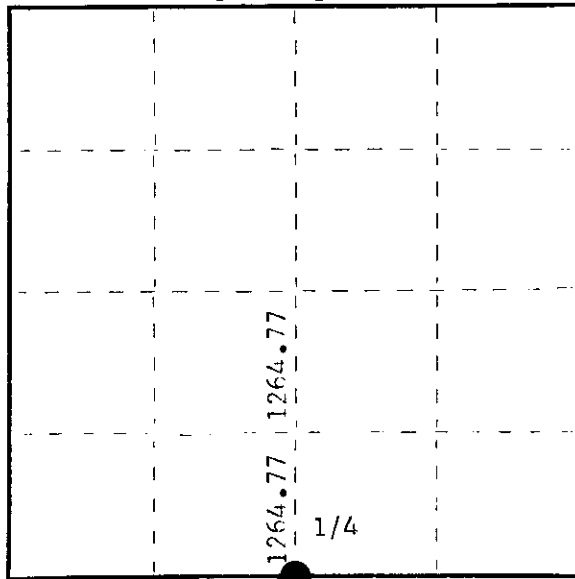
Jim Claflin

Herb Wagoner



FORM 985 H. C. MILLER CO., MILWAUKEE

T38N R10E



○ = Corner monument restored.

History of original corner establishment:

Original corner established by Hiram C. Fellows, Deputy Surveyor, in 1860. Temporary corner set by N. Loftus, Ripco Surveyor, in 1956 when he surveyed section 33. Notes indicate he set a temporary corner only.

Description of corner evidence found:

No evidence of any corner recovered. Corner sets in an open plowed field. Ran traverse from C 1/4 corner set by N. Loftus, section 33, south to the SC 1/16 corner. Computed distance 1264.77 feet at bearing S 1° 34' 17" W. Prolonged this line S 1° 34' 17" W., 1264.77 feet. Corner falls 100' south of the north edge of the field.

Description of monument and accessories I established to perpetuate the original location of this corner.

Set a 1" iron pipe 18" long, 2 feet below the surface of plowed field. Set a W.C. 110.0' north of true corner. This is a 2-1/2" Bernsten A-1 Federal Monument, projecting 18" above ground, cap stamped:

Marked NBT's to true corner.

Twin Maple 6" N34°E 131.90'

W. Birch 9" N13°W 133.70'

both scribed 1/4 FT.

T38N R10E

1/4 S+33  
S+4

T37N R10E

S 110.0 ft. to cor.

Dated at Rhineland, Wis., this 17th day of December, 1979

Signature Philip T. Hansen Title Registered Land Surveyor Registration No. S-498  
(County Surveyor, Registered Land Surveyor, or other duly authorized official)

Office of Register of Deeds, County of Cneida, I hereby certify that the within instrument was filed in this office for record on the 14th day of January, 1980 at 1:30 o'clock P M.

Loris Verge Kuehn  
(Register of Deeds)

By.....Deputy

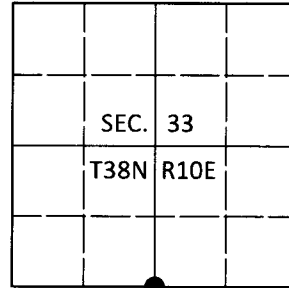
3570350020

# U.S. PUBLIC LAND SURVEY MONUMENT RECORD

Note: This form is intended and designed to fulfill all requirements of Wisconsin Administrative Code, Chapter A-E 7.08 U.S. Public Land Survey Monument Record (3)(a-i).

(a) CORNER LOCATION  
 1/4 Cor. of Secs. 4 & 33  
 Township 37 & 38 North  
 Range 10 East of the 4th P.M.  
 Town of Stella & Sugar Camp  
 County of Oneida

WISCRS - Oneida County  
 N: 198,402.95 USft  
 E: 305,580.64 USft  
 Datum: NAD83(2011)  
 GNSS Method: RTN - Direct  
 GNSS Control: WISCORS VRS



(b) HISTORY OF ORIGINAL CORNER ESTABLISHMENT

Original Surveyor: \_\_\_\_\_ Original Accessories: \_\_\_\_\_  
 Date of Survey Commenced: \_\_\_\_\_ See previous monument record(s)  
 Completed: \_\_\_\_\_

(b)(f)(g)(h) Description of monument found at this corner and if it was accepted, state all evidence (material, testimonial, occupational, plats, records, other monuments) used as a basis for accepting. If not accepted or if nothing was found, state evidence used as basis for establishing location. If re-established through lost corner proportionate methods, indicate all monuments, distances and directions used to establish. Indicate type of monument and sign post found or set.

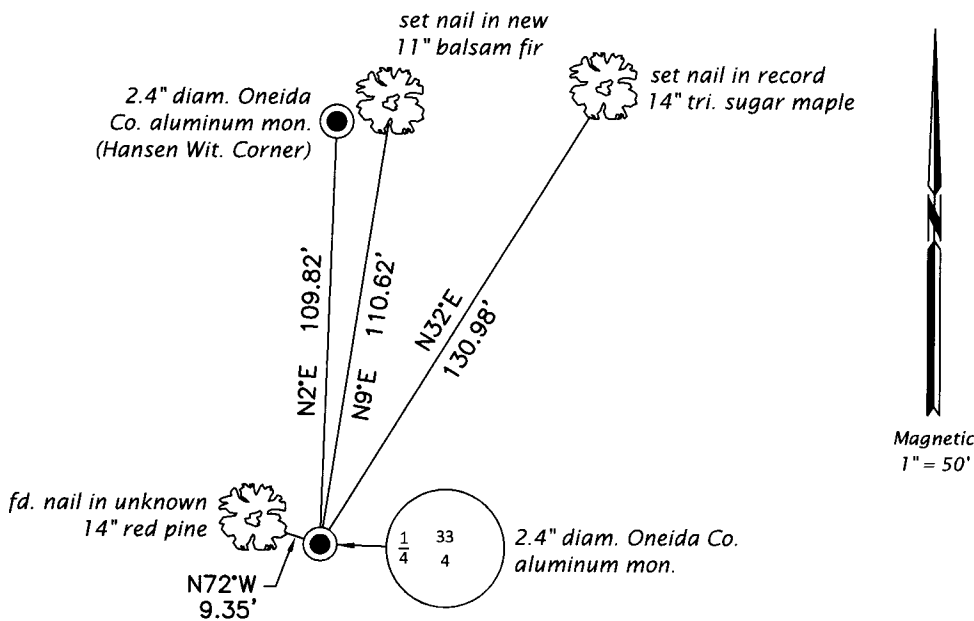
*This is a perpetuation of the following monument record(s) that comprise a complete history of the corner:*

*Dec. 17, 1979: Certified Land Corner Restoration No. 3810330020 by Philip T. Hansen, RLS*

*June 21, 2019: I found and accepted a monument of unknown origin, a 2.4" diam. aluminum pipe with a 3.3" diam. Oneida Co. aluminum cap flush with the ground surface. I found or established accessories as shown below. I found a white vinyl sign post bearing North, 0.7 ft.*

*The coordinate value shown has been verified by at least one of the following methods: 1) comparison to a previously GPS determined published value; 2) the value is the average of two or more GPS observations at a markedly different time; 3) one or more distances were measured back to the GPS observed corner from temporary GPS observed offset locations.*

(c)(d)(e) Plan view of corner with ties to at least 4 witness monuments. If in disagreement with previously established corner, show the distances between the two corners and also indicate the ties to the disputed.

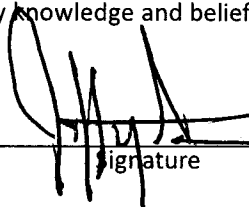


REGISTER OF DEEDS OFFICE  
 ONEIDA COUNTY  
 FILED

AUG 28 2019

KYLE J. FRANSON  
 REGISTER OF DEEDS

(i) I, Jeffrey W. Austin, Professional Land Surveyor No. S-1885, hereby certify that the corner location on this record was determined by me or under my direction and control and that this U.S. Public Land Survey Monument Record is correct and complete to the best of my knowledge and belief.

 \_\_\_\_\_  
 Signature Date: JUL - 19, 2019