

CERTIFIED LAND CORNER RESTORATION

Index No. Y-10

State of Wisconsin

County of Oneida } ss.

I Philip T. Hansen, do hereby certify that on the 2nd day of May, 1978, I found evidence of the SW 1/16 corner of Section 33

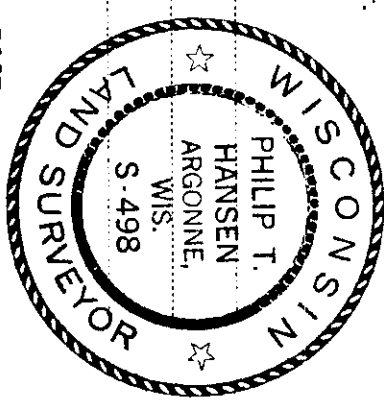
Township 38, North, Range 10 East, Fourth Principal Meridian,

as described hereon; and that from this evidence I established a new monument and accessories as described hereon to perpetuate the original location of this corner.

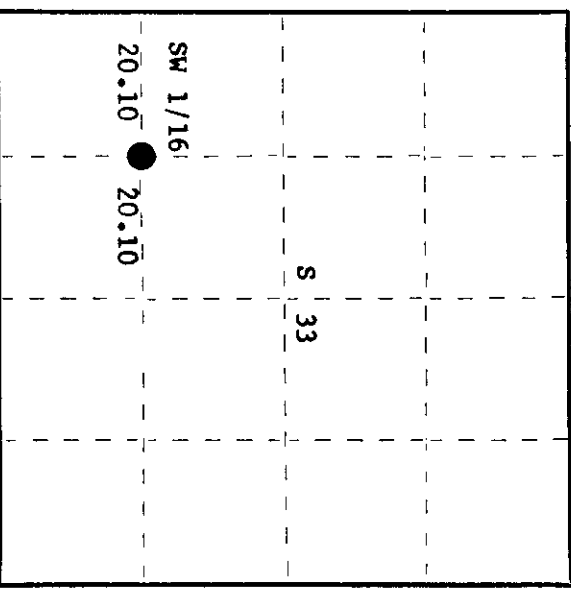
Resident witnesses:

Jim Claffin

Herb Wagoner



T38N R10E



History of original corner establishment:

Corner established by N. Loftus, Ripco Surveyor, in 1956. Ran random line N 87° 32' W from SC 1/16 section 33, 40.20 chains to close out 1.16 chains north of S 1/16 on west line. Established SW 1/16 at 20.10 chains intermediate.

Marked BT's - Maple 6" N88°W, 5.5 links
Balsam 5" S2°W, 1 link

Description of corner evidence found:

Recovered 1" iron pipe with 2" square brass cap stamped:
Projects 20" above ground.

Recovered OBT's -

Maple 6" (8") N88°W, 5.5 links (6.5 links)
Balsam 5" (7") S2°W (S17°W) 1 link (2 links)
scribing grown over

SW 1/16 S 33
RIPCO

Description of monument and accessories I established to perpetuate the original location of this corner.

NBT's - Maple 10" N52°W, 60 links
Maple 10" S71°W, 61 links
scribed 1/16 BT

Dated at Rhinelander, Wis., this 19th day of May, 1978

Signature Philip T. Hansen Title Registered Land Surveyor Registration No. S-498
(County Surveyor, Registered Land Surveyor, or other duly authorized official)

Office of Register of Deeds, County of Oneida, I hereby certify that the within instrument was filed in this office for record on the 22nd day of May, 1978 at 1:00 o'clock P. M.

Donna George Kuehn
(Register of Deeds)

By: _____ Deputy