

Stock No. 26273

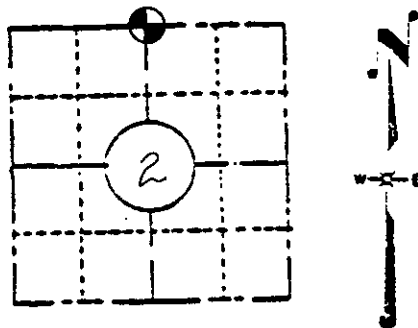
# U. S. PUBLIC LAND SURVEY MONUMENT RECORD

**INSTRUCTIONS:** This record shall show the location of the corner and shall include all of the following nine elements (a through i).

(a) Identify the corner by reference to the U.S. public land survey system.

Township 38 North Range 10 East  
 Township 37 North Range 10 East

1/4 Corner bet. Sections  $\frac{35}{2}$



**LOCATION SKETCH**  
 (Location of landmark indicated by "a")

Original BT's

Hemlock 9" N12°W 15 lks  
 Hemlock 10" S10°E 20 lks

Compared with all record data and accepted as correct.

*Robert H. Wink* 18 JUL 84  
 Oneida County Surveyor date

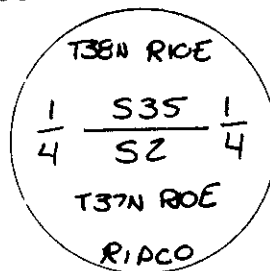
(b) Describe any record evidence, monument evidence, occupational evidence, testimonial evidence or any other material evidence you considered, and whether the monument was found or placed.

Recovered a 1" Iron pipe alongside a 2" Iron pipe with brass cap stamped, 2" iron pipe with brass cap was set by St. Regis surveyors in the 60's, The 1" iron pipe was set by H. Hall as per his notes of 1932, Hall recovered the Hemlock original BT from which he drove his 1" iron pipe and placed a new wooden post. Hall also made New bearing trees: Basswood 16" N23°E 44.8' and Hem. 16" S57°W 29.3'. I recovered Halls Basswood standing green face of blaze badly rotted, bearing and distance to St. Regis monument fits well.

(c) In the plan view drawing below, provide reference ties to at least 4 witness monuments, or, if the location is within a municipality, to at least 2 witness monuments. (Witness monuments shall be made of concrete, natural stone, iron or other equally durable material, except wood.) Describe witness monuments.

(d) Show a plan view drawing depicting the relevant monuments and reference ties which is sufficient in detail to enable accurate relocation of the corner monument if the corner monument is disturbed. Indicate north.

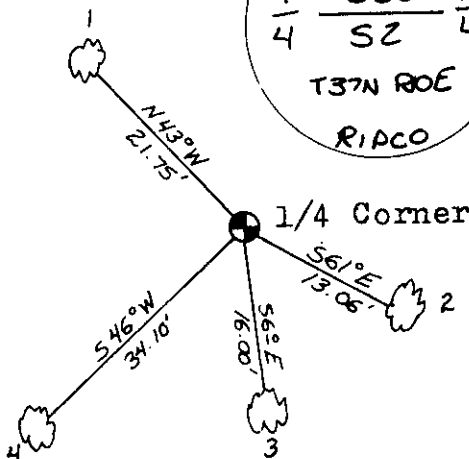
BRASS CAP STAMPED:



Reference Monuments:

1. W/ash 8"
2. Sugar 6"
3. Sugar 6"
4. Sugar 7"

All BT's faced, drove a 6"x1/4" Iron nail in root crown of all BT's. distances to nails.



NOTE: BT's land 4 were made by St. Regis

381D 350020

A-19

(e) Describe any material discrepancy between the location of the corner as restored or reestablished and the location of that corner as previously restored or reestablished by distance and direction. Show the discrepancy on the plan view drawing under (d), above. Show the distances between the corner as previously restored or reestablished and (1) the corner as restored or reestablished, and (2) to at least 2 of the witness monuments shown on the drawing in (d), above.

NONE

(f) Was the corner restored through acceptance of (1) an obliterated evidence location, or, (2) a found perpetuated location?

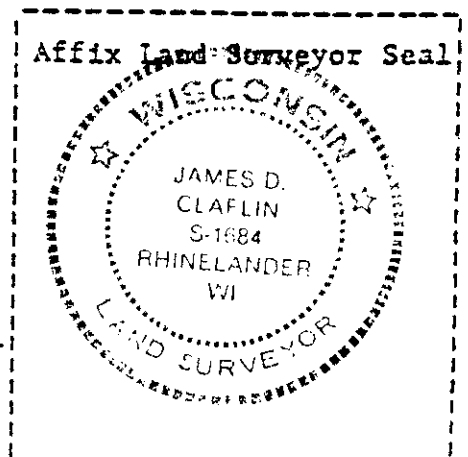
FOUND PERPETUATED LOCATION

(g&h) Was the corner reestablished through lost corner proportionate methods? If so, show the method, including the directions and distances to other public land survey corners used as evidence or used for proportioning in determining the corner location?

REGISTERS OFFICE }  
Oncida County, Wis. |  
Received for Record the 18th day of  
January A.D. 1984 at  
10:00 o'clock A M. and recorded in  
Vol. \_\_\_\_\_ on page \_\_\_\_\_  
Louis Verage Kuehn  
Register

(i) I, James D. Clafflin  
(type or print name) certify that the corner location shown  
on this record was determined by me or under my direction and  
control and that this U.S. Public Land Survey Monument Record  
is correct and complete to the best of my knowledge and belief.

[Signature] \_\_\_\_\_  
Signature Date 9-17-83



U.S. PUBLIC LAND SURVEY MONUMENT RECORD ADDENDUM

Note: This form is intended and designed to fulfill all requirements of the Wisconsin Administrative Code, Chapter A-E 7.08 U.S. Public Land Monument Record (3)(a)(b)(c)(d)(e)(f)(g)(h)(i). An additional sheet may be added if necessary to conform with said requirements.

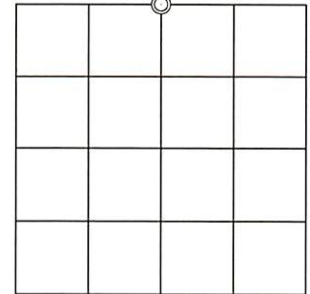
(a) CORNER LOCATION:

North Quarter Corner of Section 2  
Township 37 North  
Range 10 East  
Town of Stella  
County of Oneida

North:  
East:  
Datum:  
GNSS Method:  
GNSS Control:

(RECORDING AREA)

SECTION 2



(b) HISTORY OF ORIGINAL CORNER ESTABLISHMENT

Original Surveyor:  
Date of Survey: Commenced  
Completed  
Original B.T.'S

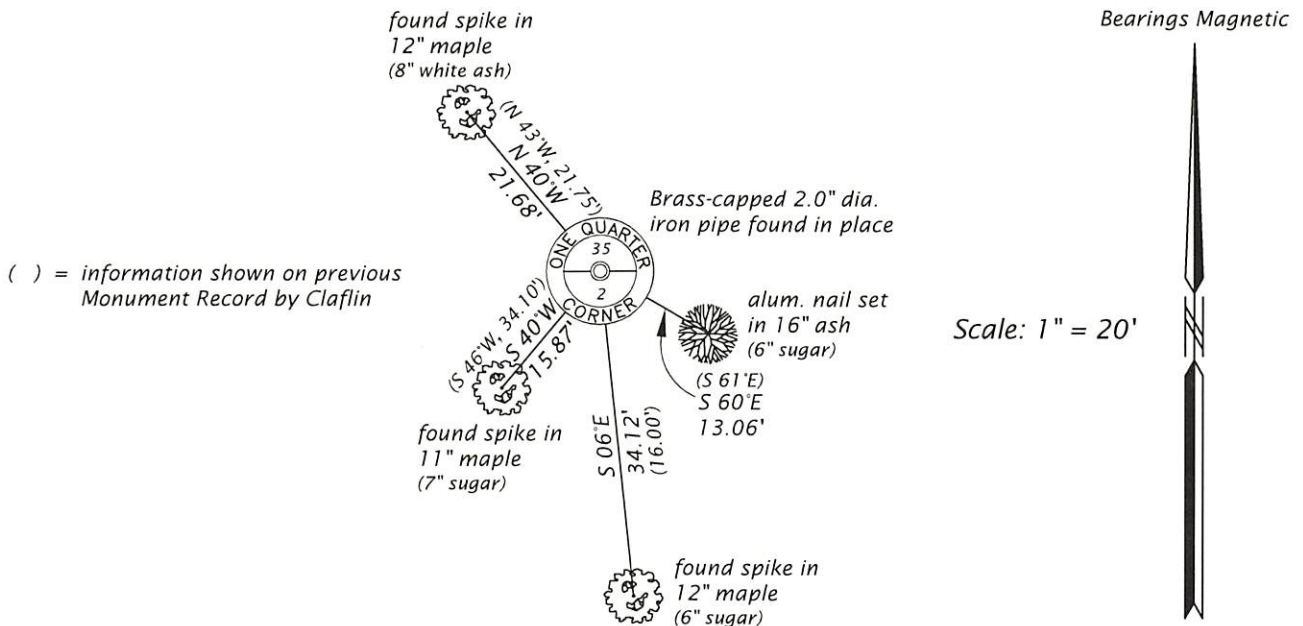
SEE PREVIOUS U.S.P.L.S. MONUMENT RECORD DATED SEPTEMBER 17, 1983

(f)(g)(h) DESCRIPTION OF MONUMENT FOUND AT THIS CORNER AND IF IT WAS ACCEPTED, STATE ALL EVIDENCE (MATERIAL, TESTIMONIAL, OCCUPATIONAL, PLATS, RECORD, OTHER MONUMENTS) USED AS A BASIS FOR ESTABLISHING LOCATION. IF NOT ACCEPTED OR IF NOTHING WAS FOUND, STATE EVIDENCE USED AS BASIS FOR ESTABLISHING LOCATION. IF REESTABLISHED THROUGH LOST CORNER PROPORTIONATE METHODS, INDICATE ALL MONUMENTS, DISTANCES AND DIRECTIONS USED TO ESTABLISH. INDICATE TYPE OF MONUMENT AND SIGN POST FOUND OR SET.

This is a perpetuation of a previous U.S.P.L.S. Monument Record by James D. Clafin, RLS, dated September 17, 1983, and filed in the office of the Oneida County Register of Deeds. A complete history of the corner can be found on the previous monument record. I accept the previous location as a true and faithful perpetuation or reestablishment of the original corner location and further perpetuate it as follows.

November 1, 2023 - James D. Rein, P.L.S. No. 1234. We found, and I accepted, the brass-capped 2.0" dia. iron pipe shown on the previous Monument Record by Clafin. Some of the bearing tree information shown on Clafin's Monument Record was incorrect. See below for updated references.

(c)(d)(e) PLAN VIEW OF CORNER WITH TIES TO AT LEAST 4 WITNESS MONUMENTS. IF IN DISAGREEMENT WITH PREVIOUSLY ESTABLISHED CORNER, SHOW THE DISTANCE BETWEEN THE TWO CORNERS AND ALSO INDICATE THE TIES TO THE DISPUTED CORNER.



(i) I, JAMES D. REIN, PROFESSIONAL LAND SURVEYOR NO. S-1234 HEREBY CERTIFY THAT THE CORNER LOCATION ON THIS RECORD WAS DETERMINED BY ME OR UNDER MY DIRECTION AND CONTROL AND THAT THIS U.S. PUBLIC LAND SURVEY MONUMENT RECORD IS CORRECT AND COMPLETE TO THE BEST OF MY KNOWLEDGE AND BELIEF.

*James D. Rein*  
SIGNATURE

12-27-23  
DATE

