

At _____ O'Clock _____ M
THOMAS H. LEIGHTON

REGISTER OF DEEDS

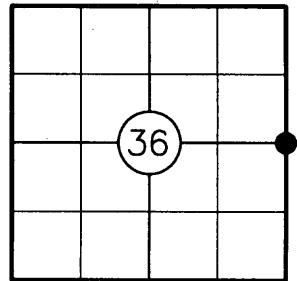
U.S. PUBLIC LAND SURVEY MONUMENT RECORD

NOTE: THIS FORM IS INTENDED AND DESIGNED TO FULFILL ALL REQUIREMENTS OF WISCONSIN ADMINISTRATIVE CODE CHAPTER A-E 7.08 U.S. PUBLIC LAND SURVEY MONUMENT RECORD (3) (a)(b)(c)(d)(e)(f)(g)(h)(i). AN ADDITIONAL SHEET MAY BE ADDED IF NECESSARY TO CONFIRM WITH SAID REQUIREMENTS.

(a) CORNER LOCATION:

E 1/4 CORNER OF SECTION 36
TOWNSHIP 38 NORTH
RANGE 10 EAST
TOWN OF THREE LAKES
ONEIDA COUNTY

REGISTER OF DEEDS OFFICE



(b) HISTORY OF ORIGINAL CORNER:

ORIGINAL SURVEYOR: HIRAM C. FELLOWS
DATE OF SURVEY: JULY, 1859

ORIGINAL BEARING TREES: 8" TAMARACK N36°E, 16 LKS.
8" TAMARACK S72°W, 51 LKS.

(f)(g)(h) DESCRIPTION OF MONUMENT FOUND AT THIS CORNER AND IF IT WAS ACCEPTED STATE ALL EVIDENCE (MATERIAL, TESTIMONIAL, OCCUPATIONAL, PLATS, RECORDS, OTHER MONUMENTS) USED AS A BASIS FOR ESTABLISHING LOCATION. IF REESTABLISHING THROUGH LOST CORNER PROPORTIONATE METHODS, INDICATE ALL MONUMENTS, DISTANCES, AND DIRECTIONS USED TO ESTABLISH. INDICATE TYPE OF MONUMENT AND SIGN POST FOUND OR SET.

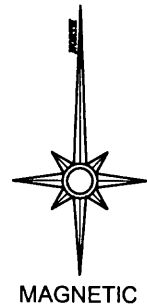
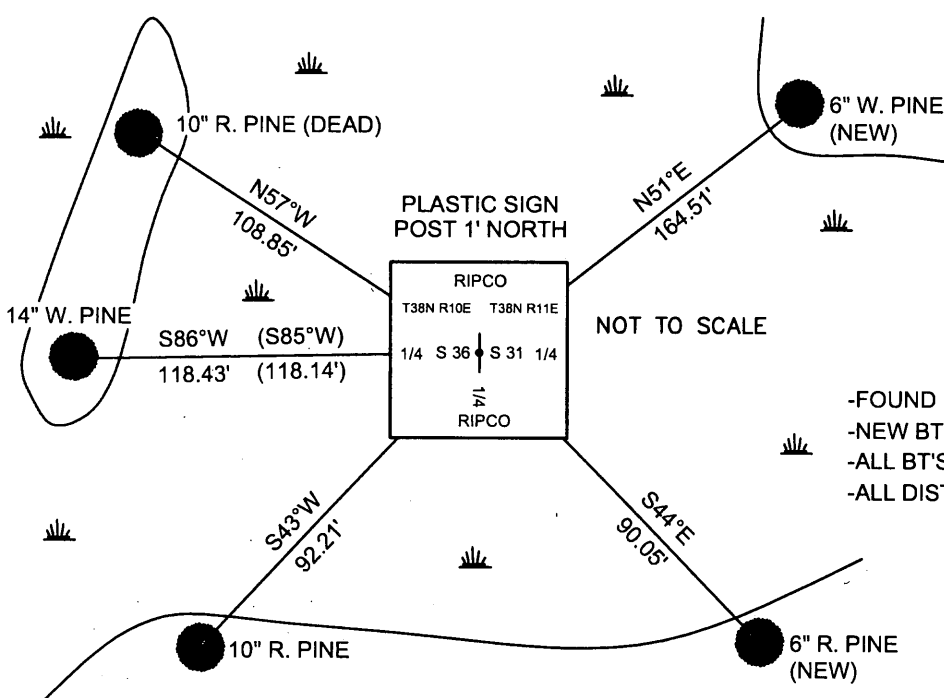
1909: D.H. VAUGHAN'S NOTES STATE HE FOUND THE "STUMPS OF ORIGINAL TREES OK", DIDN'T MAKE ANY NEW BT'S.

RIPCO NOTES (LOFTUS - UNDATED) STATE AT 87.31 CHAINS WEST OF THE E 1/4 CORNER THEY FOUND 1/4 CORNER AND MADE TWO NEW BT'S: Pw 8 S85°W, 1.79 CH. & Ta 4 S5°E, 78 1/2 LKS.

1961: RIPCO NOTES STATE THEY FOUND 1/4 CORNER 43.10 CHAINS NORTH OF THE SW SECTION CORNER OF SECTION 31-38-11.

2007: I FOUND AND ACCEPTED A RIPCO 2" DIA IRON PIPE WITH A 4" SQUARE BRASS TABLET. I FOUND THREE EXISTING BT'S AND MADE TWO NEW BT'S AS SHOWN BELOW.

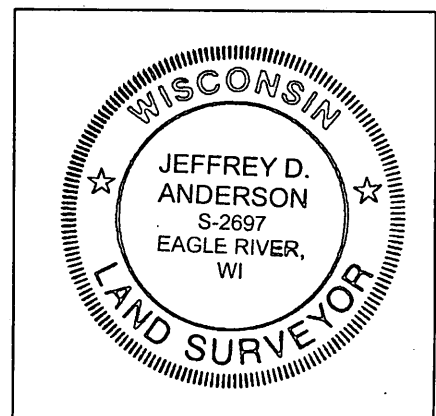
(c)(d)(e) PLAN VIEW OF CORNER WITH TIES TO AT LEAST FOUR WITNESSES. IF IN DISAGREEMENT WITH PREVIOUSLY ESTABLISHED CORNER, SHOW THE DISTANCES BETWEEN THE TWO CORNERS AND ALSO INDICATE THE TIE TO THE DISPUTED CORNER.



- FOUND BT'S - FOUND 60D SPIKES IN SIDE OF TREE
- NEW BT'S - SET ALUMINUM NAILS IN SIDE OF TREE
- ALL BT'S DOUBLE BLAZED
- ALL DISTANCES TO NAILS

I, JEFFREY D. ANDERSON, REGISTERED LAND SURVEYOR NO. 2697, HEREBY CERTIFY THAT THE CORNER LOCATION ON THIS RECORD WAS REFERENCED BY ME OR UNDER MY DIRECTION AND CONTROL AND THAT THIS U.S. PUBLIC LAND SURVEY MONUMENT RECORD IS COMPLETE TO THE BEST OF MY KNOWLEDGE AND BELIEF.

SIGNATURE: *Jeffrey D. Anderson* DATE: 1/25/08



INDEX NO. X 25

3810 36 20 00