

Stock No. 26273

U.S. PUBLIC LAND SURVEY MONUMENT RECORD

Index No. D-E 25

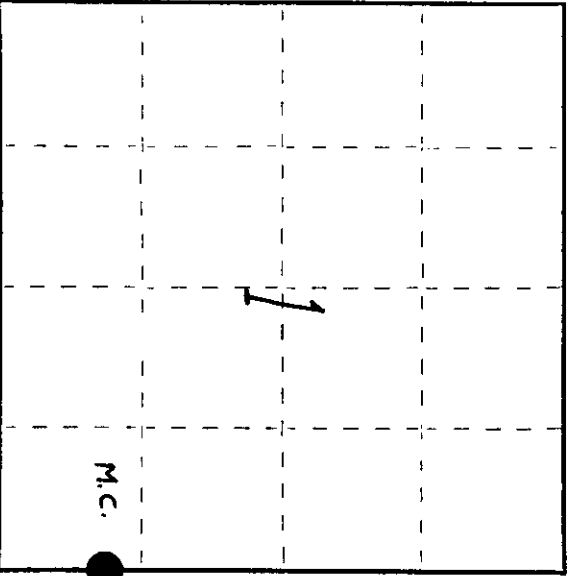
State of Wisconsin

County of Oneida } ss.

I, John H. Fisher, do hereby certify that on the 16 day of October, 1934, I found evidence of the Meander corner of Sections 1 and 6 Township 38 North, Range 11 & 12 East, Fourth Principal Meridian, as described hereon; and that from this evidence I established a new monument and accessories as described hereon to perpetuate the original location of this corner.

Resident witnesses:

None



O = Corner monument restored.

History of original corner establishment: Original Survey in 1858 by Alfred Willard. Dependent Resurvey in 1937 by Wesson Cook. At 8.74 chains set a witness corner concrete monument 24 inches long, 6 inches diameter, 20 inches in ground with a brass tablet stamped: From which the following bear:

|         |        |    |            |        |
|---------|--------|----|------------|--------|
| R 11 E  | T 12 E | 6" | N28-1/2° E | 72 lks |
| S 1 S 6 |        | 6" | N39° W     | 81 lks |

M.C. 1937

Description of corner evidence found:

B.L.M. Monument as described and in place

Description of monument and accessories I established to perpetuate the original location of this corner.

Corner in good condition: Blazed and scribed the following bearing trees:

Set nails in:

|                     |    |        |           |
|---------------------|----|--------|-----------|
| Oak                 | 9" | N53° E | 57.3 feet |
| Tamarack            | 6" | N43° E | 42.3 feet |
| Black Spruce        | 3" | N 3° E | 28.0 feet |
| Red Pine            | 7" | N 1° W | 27.0 feet |
| Set steel sign post |    | South  | 1.0 feet  |

Dated at Minocqua, Wis., this 11th day of March, 1935

Signature: John H. Fisher, Title: Registered Land Surveyor, Registration No. S-836 (County Surveyor, Registered Land Surveyor, or other duly authorized official)

Office of Register of Deeds, County of Oneida, at 3:30 o'clock P.M. I hereby certify that the instrument was filed in this office for record on the 23rd day of April, 1935

Signature: Doris L. Fisher, (Register of Deeds)

By: Deputy

3811010700

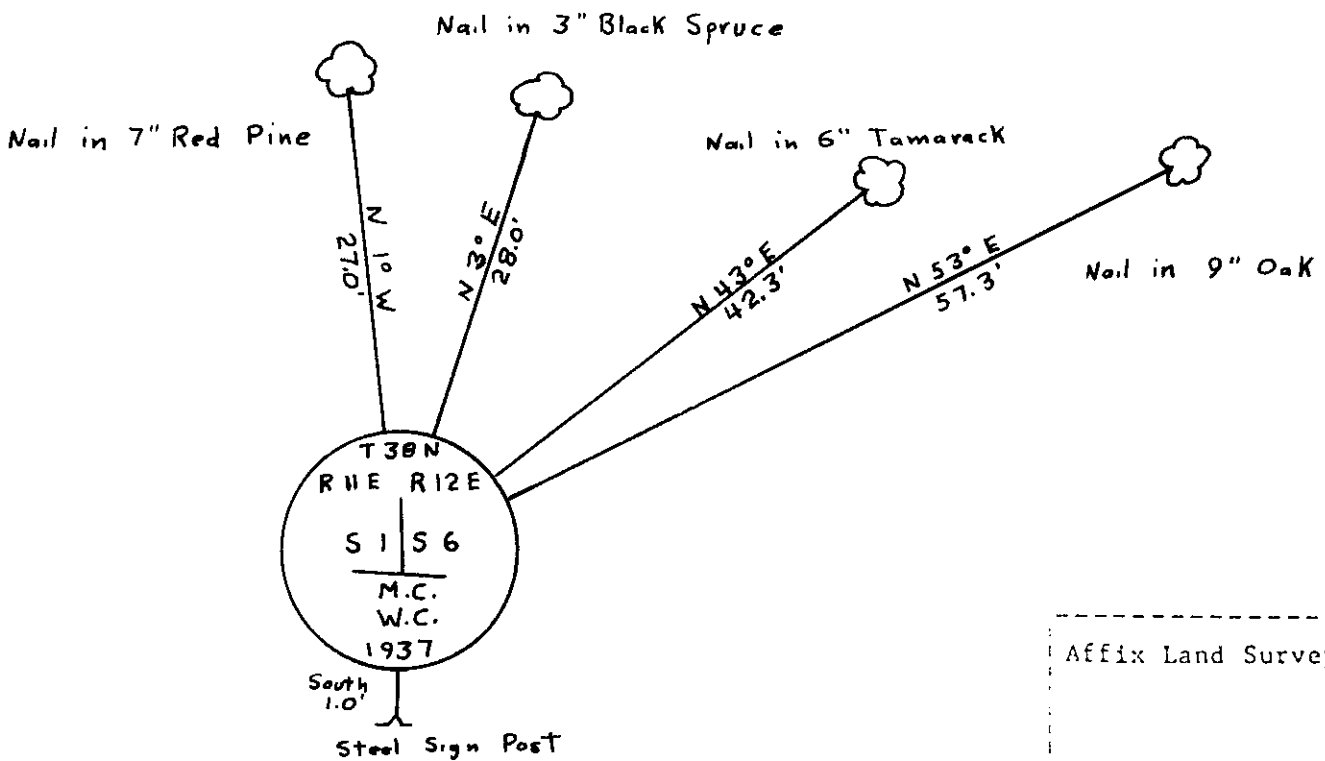
(e) Describe any material discrepancy between the location of the corner as restored or reestablished and the location of that corner as previously restored or reestablished by distance and direction. Show the discrepancy on the plan view drawing under (d), above. Show the distances between the corner as previously restored or reestablished and (1) the corner as restored or reestablished, and (2) to at least 2 of the witness monuments shown on the drawing in (d), above.

See drawing below

(f) Was the corner restored through acceptance of (1) an obliterated evidence location, or, (2) a found perpetuated location?

Found perpetuated location

(g&h) Was the corner reestablished through lost corner proportionate methods? If so, show the method, including the directions and distances to other public land survey corners used as evidence or used for proportioning in determining the corner location?



Affix Land Surveyor Seal

(1) I, John H. Fisher (type or print name), certify that the corner location shown on this record was determined by me or under my direction and control and that this U.S. Public Land Survey Monument Record is correct and complete to the best of my knowledge and belief.

John H. Fisher  
Signature

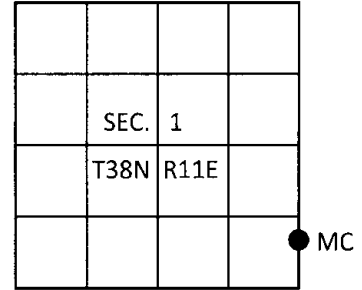
3/21/85  
Date

**U.S. PUBLIC LAND SURVEY MONUMENT RECORD**

Note: This form is intended and designed to fulfill all requirements of Wisconsin Administrative Code, Chapter A-E 7.08 U.S. Public Land Survey Monument Record (3)(a-i).

(a) CORNER LOCATION  
 Meander Cor. of Secs. 1 & 6  
 Township 38 North  
 Range 11 & 12 East of the 4th P.M.  
 Town of Three Lakes  
 County of Oneida

WISCRS - Oneida County  
 N: 223,597.22 USft  
 E: 356,753.10 USft  
 Datum: NAD 83(2011)  
 GNSS Method: Real-Time Network  
 GNSS Control: WISCORS VRS



(b) HISTORY OF ORIGINAL CORNER ESTABLISHMENT

Original Surveyor: \_\_\_\_\_ Original Accessories: \_\_\_\_\_  
 Date of Survey Commenced: \_\_\_\_\_  
 Completed: \_\_\_\_\_

(b)(f)(g)(h) Description of monument found at this corner and if it was accepted, state all evidence (material, testimonial, occupational, plats, records, other monuments) used as a basis for accepting. If not accepted or if nothing was found, state evidence used as basis for establishing location. If re-established through lost corner proportionate methods, indicate all monuments, distances and directions used to establish. Indicate type of monument and sign post found or set.

*This is a perpetuation of a previous USPLS Monument Record by John H. Fisher, RLS dated March 21, 1985 and filed in the office of the Oneida County Register of Deeds. A complete history of the corner can be found on the previous monument record. I accept the previous location as a true and faithful perpetuation or reestablishment of the original corner location and further perpetuate it as follows.*

*August 18, 2016: I found and accepted the record monument, a 6" diam. concrete monument with a 3-1/4" diam. GLO brass tablet projecting 4" above the ground surface. The existing accessories were found in substantial agreement with the record and were not remeasured as the sole purpose of this work is to report the coordinates of the corner point.*

*The coordinate value shown has been verified by at least one of the following methods: 1) comparison to a previously GPS determined published value; 2) the value is the average of two or more GPS observations at a markedly different time; 3) one or more distances were measured back to the GPS observed corner from temporary GPS observed offset locations.*

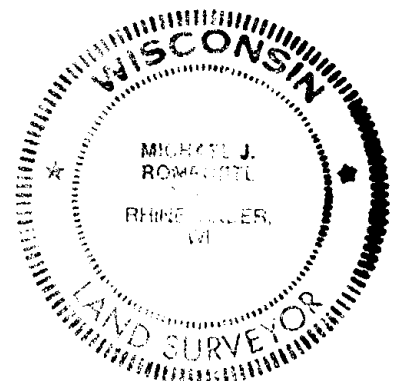
(c)(d)(e) Plan view of corner with ties to at least 4 witness monuments. If in disagreement with previously established corner, show the distances between the two corners and also indicate the ties to the disputed.

REGISTER OF DEEDS OFFICE  
 ONEIDA COUNTY  
 FILED

DEC 28 2016

AT \_\_\_\_\_ O'CLOCK \_\_\_\_\_ M  
 KYLE J. FRANSON  
 REGISTER OF DEEDS

(i) I, Michael J. Romportl, Professional Land Surveyor No. S-1624, hereby certify that the corner location on this record was determined by me or under my direction and control and that this U.S. Public Land Survey Monument Record is correct and complete to the best of my knowledge and belief.



Michael J. Romportl 12/23/2016  
 Signature Date