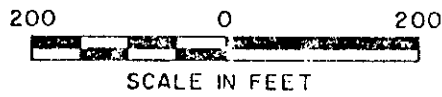


REGISTER'S OFFICE }  
 Oneida County, Wis. }  
 Received for Record the 12th day of  
January, A. D. 1976 at  
2:00 o'clock P. M. and recorded in  
 Vol. Sous Verge Kuehn on page \_\_\_\_\_  
 Register

# CERTIFIED BOUNDARY LINE ESTABLISHMENT

Being the East Line SE 1/4 SE 1/4 Section 2, Township 38 North, Range 11 East, 4th P.M.  
 County of Oneida, State of Wisconsin



### SURVEY NOTES

This survey of the east line SE 1/4 SE 1/4 of section 2, township 38 north, range 11 east, fourth principal meridian, was made by the U.S. Department of Agriculture, Forest Service.

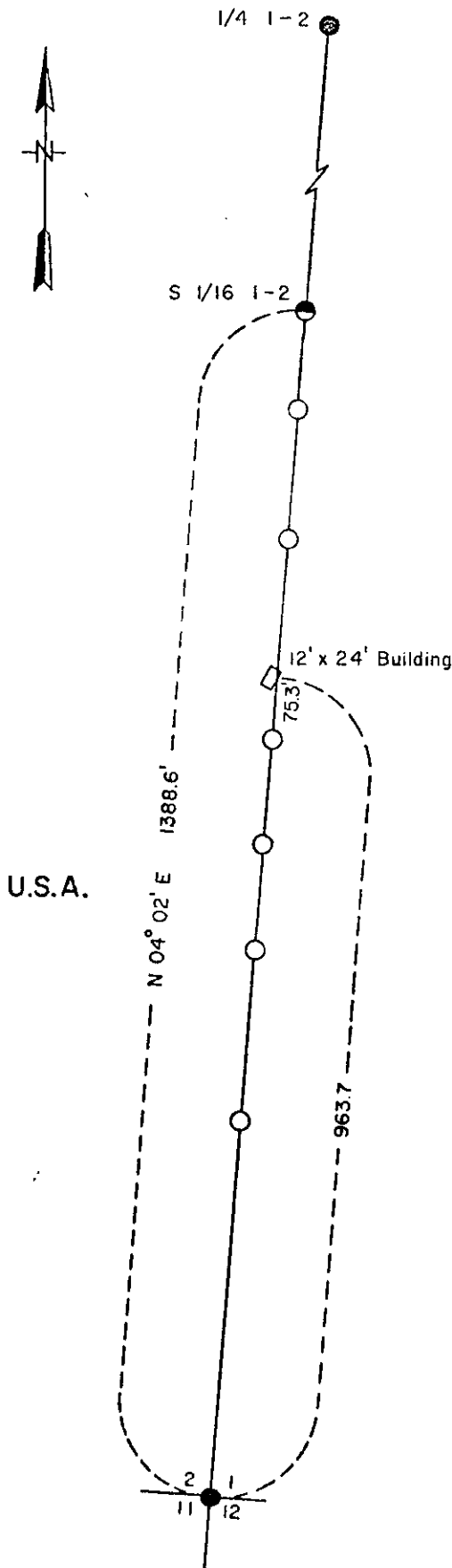
The purpose of this survey is to locate and mark the east line SE 1/4 SE 1/4 and to locate an existing building in relation to this line.

The U.S. Government acquired title to the SE 1/4 SE 1/4 of section 2 in 1931.

### LEGEND

- 1941 GLO Dependent Resurvey Monument
- ◐ 2 inch I.D. by 5 foot long galvanized iron pipe capped with 3 inch brass tablet stamped to identify corner.
- Line post
- Building

U.S.A. U.S. Government Land



3811022000  
 3811021000  
 3811020000

Stock No. 26273

U.S. PUBLIC LAND SURVEY MONUMENT RECORD

Index No. E 21

State of Wisconsin

County of Oneida

ss.

I, John H. Fisher, do hereby certify that on the 20 day of December, 1984, I found evidence of the Section corner of Section 1, 2, 11 and 12 Township 38 North, Range 11 East, Fourth Principal Meridian, as described hereon; and that from this evidence I established a new monument and accessories as described hereon to perpetuate the original location of this corner.

Resident witnesses:

None

History of original corner establishment: Original survey in 1859 by Alfred Willard. Dependent Resurvey in 1941 by Hugh B. Crawford. At 39.05 chains set a concrete monument 24 inches long, 6 inches diameter, 20 inches in the ground with an iron post 23 inches long 1 inch diameter embedded in center with brass tablet stamped:

T 38 N R 11 E From which the following bear:  
S 2 | S 1 | 47-1/2 lks  
S 11 | S 12 | 39 lks  
1941 White Birch 881°W 110-1/2 lks  
Yellow Birch 7" 7" N80°W 65-1/2 lks

B.L.M. Monument as described and in place and the following bearing tree

Spruce 10" S69°E 25.5 feet  
Wood sign post N38°W 1.0 feet

Description of monument and accessories I established to perpetuate the original location of this corner. Corner in good condition. Blazed and scribed the following new bearing trees.  
Set nails in:

Tamarack 10" S69°E 50.7 feet  
Spruce 7" N73°E 40.2 feet  
Spruce 6" S79°E 17.4 feet

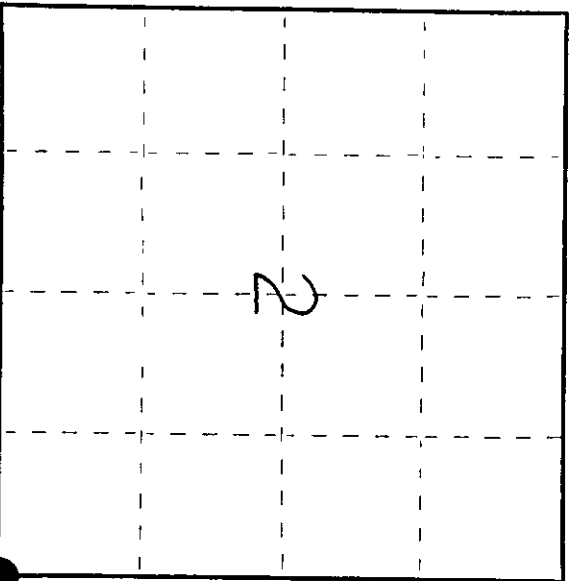
Dated at Minocqua, Wis., this 21st day of March, 1985

Signature: John H. Fisher Title: Registered Land Surveyor Registration No. S-836  
(County Surveyor, Registered Land Surveyor, or other duly authorized official)

Office of Register of Deeds, County of Oneida  
Instrument was filed in this office for record on the 23rd day of April, 1985 at 3:30 o'clock P.M.  
I hereby certify that the within

Signature: Doris Lange Fuchs  
(Register of Deeds)

By: Deputy



○ = Corner monument restored.

3811020000

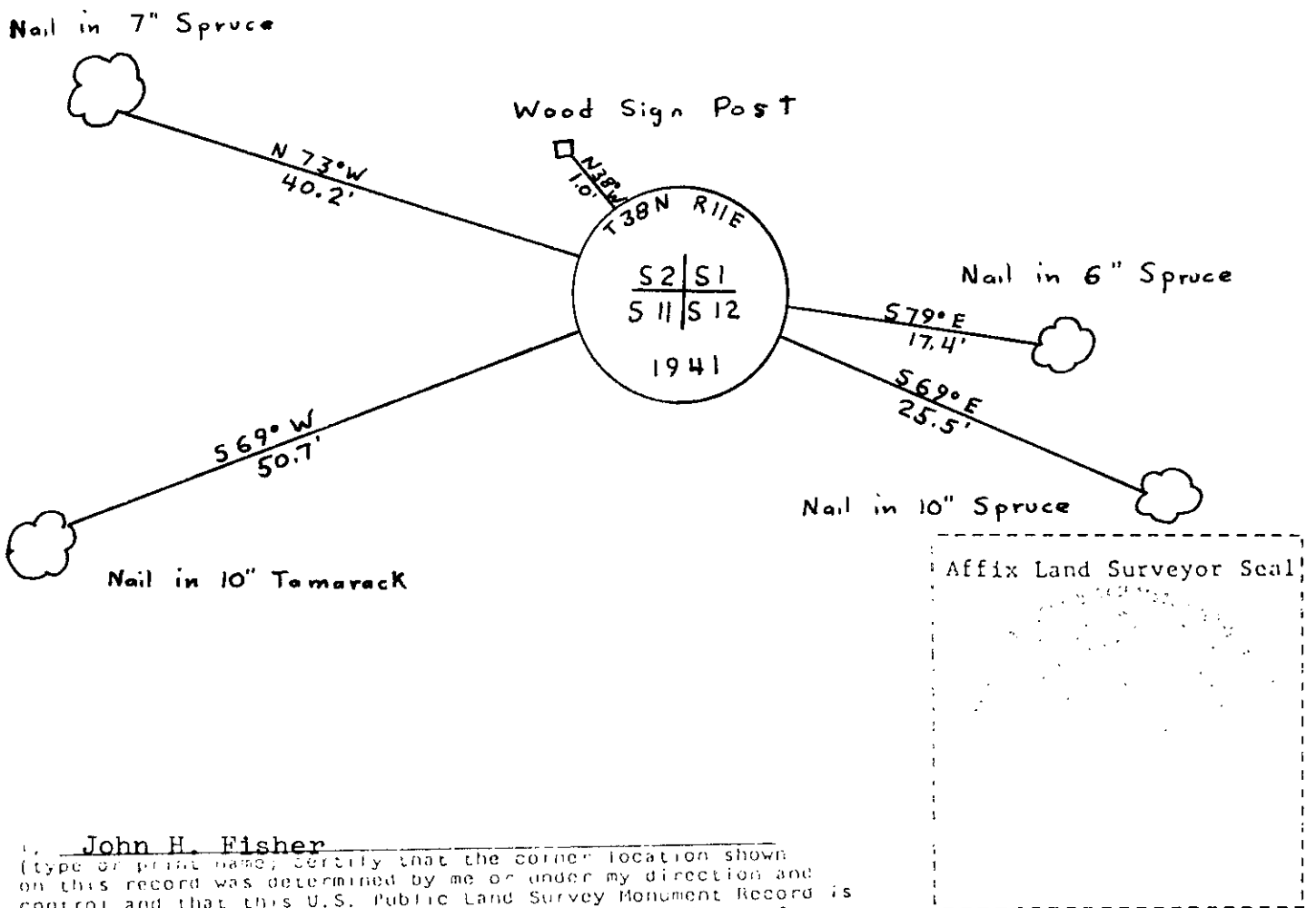
(e) Describe any material discrepancy between the location of the corner as restored or reestablished and the location of that corner as previously restored or reestablished by distance and direction. Show the discrepancy on the plan view drawing under (d), above. Show the distances between the corner as previously restored or reestablished and (1) the corner as restored or reestablished, and (2) to at least 2 of the witness monuments shown on the drawing in (d), above.

See drawing below

(f) Was the corner restored through acceptance of (1) an obliterated evidence location, or, (2) a found perpetuated location?

Found perpetuated location

(g&h) Was the corner reestablished through lost corner proportionate methods? If so, show the method, including the directions and distances to other public land survey corners used as evidence or used for proportioning in determining the corner location?



(i) I, John H. Fisher  
 (type or print name; certify that the corner location shown on this record was determined by me or under my direction and control and that this U.S. Public Land Survey Monument Record is correct and complete to the best of my knowledge and belief.

John H. Fisher  
 Signature

3/21/85  
 Date