

Stock No. 26273

U.S. PUBLIC LAND SURVEY MONUMENT RECORD

Index No. A-B 17

State of Wisconsin }
County of Oneida } ss.

I John H. Fisher, do hereby certify that on the 4th day of June 19 84, I found evidence of the Meander corner of Section 2 and 3 Township 38 North, Range 11 East, Fourth Principal Meridian, as described hereon; and that from this evidence I established a new monument and accessories as described hereon to perpetuate the original location of this corner.

Resident witnesses:

None

History of original corner establishment: Original Survey in 1859 by Alfred Willard. Dependent Resurvey in 1941 by Hugh B. Crawford. Set witness corner concrete monument 24 inches long, 6 inches diameter, 20 inches in ground with iron post 23 inches long 1 inch diameter embedded in center with brass tablet stamped: From which the following bear:

W.C. R 11 E	6"	N59-1/4° E	119-1/2 lks
5.3	7"	N64° W	50-1/2 lks
M.C. 1941	6" X 6" square concrete monument	N50-3/4° W	24 lks

Description of corner evidence found:

B.L.M. Monument as described and in place

Description of monument and accessories I established to perpetuate the original location of this corner.
Corner in good condition:
Blazed and scribed the following new bearing trees:
Set nails in:

Tamarack	8"	N45° W	24.2 feet
Cedar	6"	N38° W	61.2 feet
Tamarack	9"	N30° E	25.5 feet
Set nail in:			
Red Maple	9"	S55° E	45.8 feet
Set Steel Sign Post		S37° W	1.4 feet

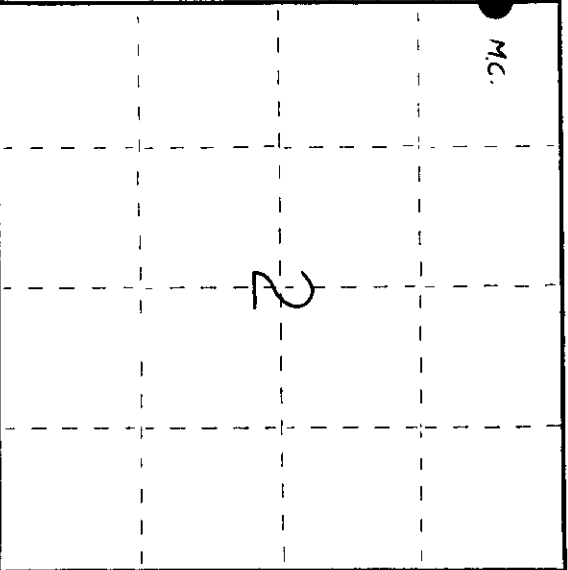
Dated at Minocqua, Wis., this 21st day of March, 1985.

Signature: *John H. Fisher* Title: Registered Land Surveyor Registration No. S-8326
(County Surveyor, Registered Land Surveyor, or other duly authorized official)

Office of Register of Deeds, County of Oneida, I hereby certify that the within instrument was filed in this office for record on the 3rd day of April, 1985 at 3:30 o'clock P.M.

Doris Virginia Kuehn
(Register of Deeds)

By: Deputy



○ = Corner monument restored.

3811033200

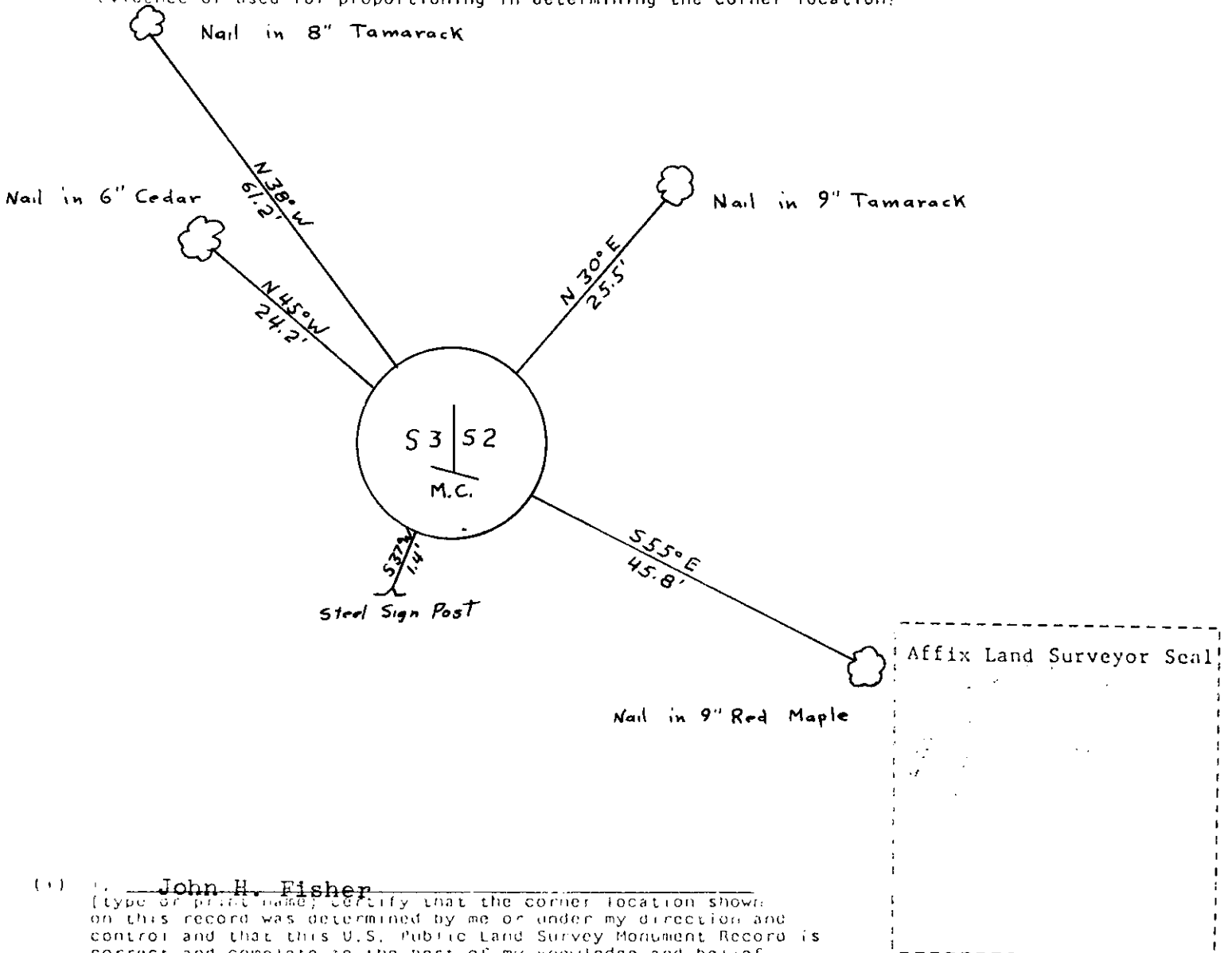
(c) Describe any material discrepancy between the location of the corner as restored or reestablished and the location of that corner as previously restored or reestablished by distance and direction. Show the discrepancy on the plan view drawing under (d), above. Show the distances between the corner as previously restored or reestablished and (1) the corner as restored or reestablished, and (2) to at least 2 of the witness monuments shown on the drawing in (d), above.

See drawing below

(f) Was the corner restored through acceptance of (1) an obliterated evidence location, or, (2) a found perpetuated location?

Found perpetuated location

(g&h) Was the corner reestablished through lost corner proportionate methods? If so, show the method, including the directions and distances to other public land survey corners used as evidence or used for proportioning in determining the corner location?



(i) I, John H. Fisher
 (type or print name) certify that the corner location shown on this record was determined by me or under my direction and control and that this U.S. Public Land Survey Monument Record is correct and complete to the best of my knowledge and belief.

John H. Fisher
 Signature

3/21/85
 Date

Affix Land Surveyor Seal