

This form is intended to fulfill the requirements of Chapter A-E7.08 (3)(a) thru (i) U.S. Public Land Survey Monument Location Record, Wisconsin Administrative Code. Use the reverse side of form for continuation.

**U.S. PUBLIC LAND SURVEY MONUMENT LOCATION RECORD**

USPLS CORNER: WEST WIT MC SECTION: 9 TOWNSHIP: 38 NORTH RANGE: 11 EAST  
 NAME OF WATERWAY FOR M.C. CORNER : BIG STONE LAKE SECTION LINE: NORTH  
 (CITY)(VILLAGE)(TOWN) OF: THREE LAKES COUNTY OF: ONEIDA

Description of monument found or placed and all other evidence used as the basis for monument location; including monuments and measurements required if the corner location was reestablished by lost corner proportionate methods. Also indicate name of the original surveyor, original survey date and the corner monument, bearing trees, witness or other reference monuments established, including measured bearing and distance ties, from available survey records.

Found an old 5" sq. concrete monument with unmarked top 28" up; as monument plumb and very stable, I epoxy glued a stamped Oneida County aluminum tablet to top of monument for identity and tie purposes per approval of Oneida County Surveyor Romportl and future longevity test purposes. Monument falls 20'+/- West of existing lake shore bearing N25°W and 37'+/- East of centerline of existing STH 32 pavement bearing S39°E.

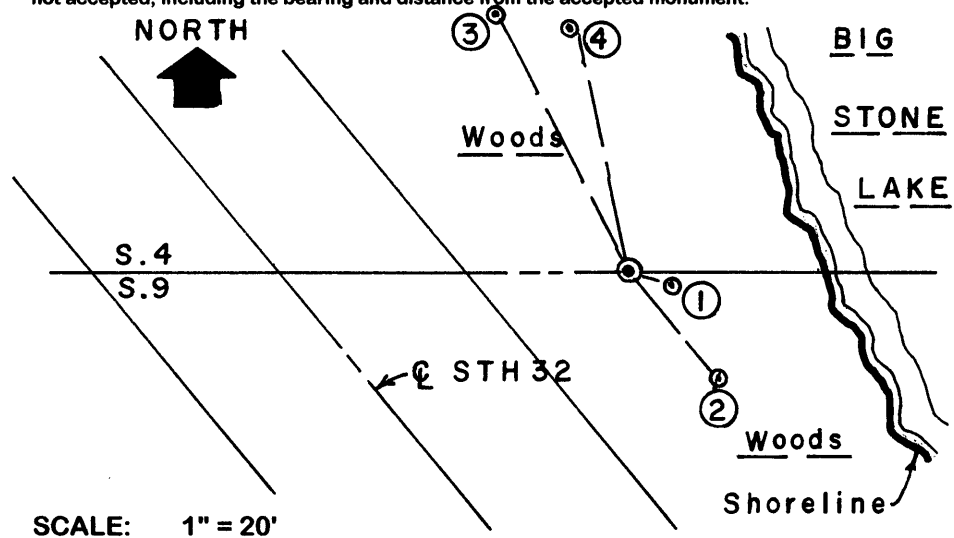
In Sept 1859, William E. Daugherty/GLO set a wood post as original MC and marked OBTs: a 12" Hemlock N28°E 9 links and a 11" Hemlock S34°E 23 links; all not found as now undoubtedly obliterated in impounded lake bed due to dam on Eagle River in Section 5.

In September 1981, James L. Will/RLS 1410 notes a 5" sq. concrete monument found in place per Plat of Survey filed as B-1592 in Oneida County survey records; no BTs noted.

In October 1989, Kip Soder/RLS 1731 notes a 5" sq. concrete monument found per Plat of Survey filed as B-2083 in Oneida County survey records; no BTs noted.

In April 2001, Kip Soder/RLS 1731 notes a 5" sq. concrete monument found per Plat of Survey filed as A-1035 in Oneida County survey records; no BTs noted. This recovery completed August 13, 2003; there were no direct witnesses.

Plan view map of monument location with bearing and distance ties to a minimum of four(4) described witness or reference monuments of concrete, natural stone, iron, live bearing trees or equivalent material. If applicable, also show a minimum of two(2) bearing and distance ties to any other monument found and not accepted; including the bearing and distance from the accepted monument.



**WITNESS MONUMENT TIES:**

- ① New 12" Or BT S67°E 4.69'.
- ② New 10" Or BT S41°E 14.75'.
- ③ New 12" Or BT N27°W 31.80' to PK/W in left face.
- ④ New 12" Pr BT N14°W 26.21'.

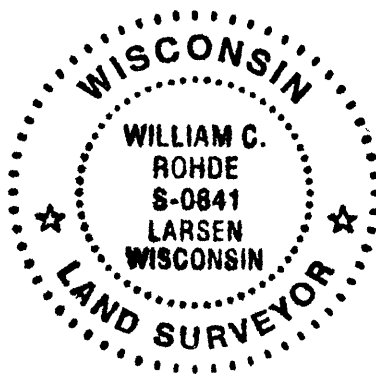
Standard white poly 'T' marker post set 12" SW of concrete monument.

I flagged monument, 'T' post and all BTs with blaze orange tape. On August 18th I checked glued tablet on monument, which had cured very firmly in place.

SCALE: 1" = 20'

Unless otherwise indicated, all bearing tree ties are to a .25" dia. by 2.5" long PK nail with a 1.25" dia. steel washer driven into unblazed right face and a .25" dia. by 2.5" long PK nail with a 2" dia. steel washer stamped BT is also driven into unblazed face of bearing tree at DBH; the basis for measured bearings is by compass to nearest degree and all tie distances are measured horizontal by steel tape corrected to nearest 1/100th feet at standard temperature of 68° F.

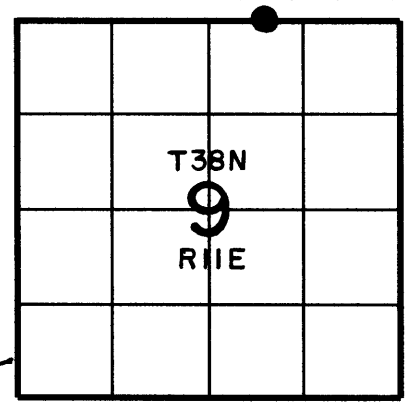
RLS SEAL:



LAND SURVEYOR CERTIFICATE:

I, William C. Rohde, hereby certify that I am duly licensed as a Professional Land Surveyor in the State of Wisconsin; that this USPLS monument location was determined by me and/or under my direct supervision and control; and that this U.S. Public Land Survey Monument Location Record is true and correct to the best of my knowledge and belief.

Signed: *William C. Rohde*  
 William C. Rohde RLS 841



SECTION LOCATION MAP  
 INDEX NO. E 11-12

SHEET 1 OF 1  
 FORM REVISED: 03/15/03

Date Signed: December 1, 2003

3811040013