

This form is intended to fulfill the requirements of Chapter A-E7.08 (3)(a) thru (i) U.S. Public Land Survey Monument Location Record, Wisconsin Administrative Code. Use the reverse side of form for continuation.

**U.S. PUBLIC LAND SURVEY MONUMENT LOCATION RECORD**

USPLS CORNER: NORTH 1/4 SECTION: 9 TOWNSHIP: 38 NORTH RANGE: 11 EAST  
 NAME OF WATERWAY FOR M.C. CORNER : N/A SECTION LINE: N/A  
 (CITY)(VILLAGE)(TOWN) OF: THREE LAKES COUNTY OF: ONEIDA

Description of monument found or placed and all other evidence used as the basis for monument location; including monuments and measurements required if the corner location was reestablished by lost corner proportionate methods. Also indicate name of the original surveyor, original survey date and the corner monument, bearing trees, witness or other reference monuments established, including measured bearing and distance ties, from available survey records.

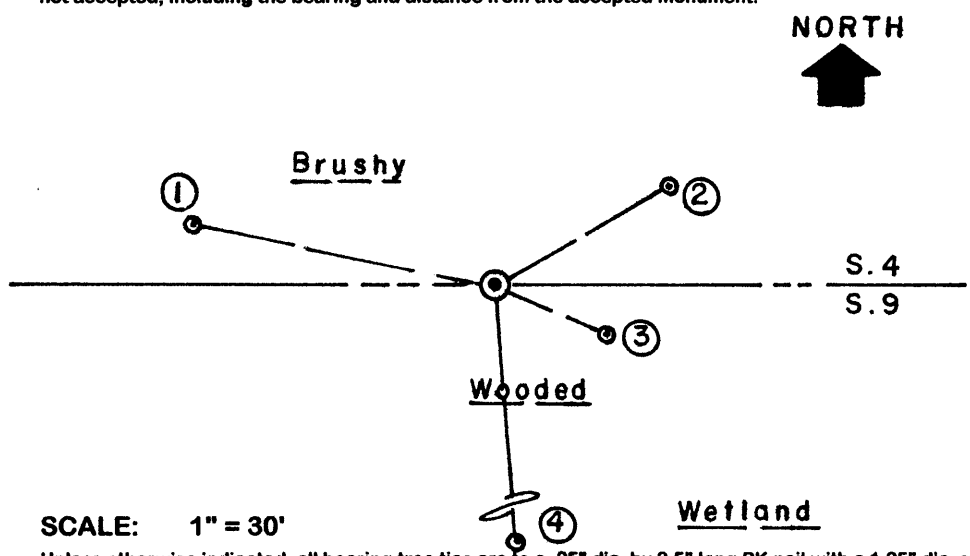
Found and accepted an old plumb and stable 5.25" square concrete monument with top 24" above boggy wetland surface; also found an old 1" dia. iron pipe with uncapped top 10" up about 6" South and a standard white poly "T" marker post 12" North of concrete monument. I cleared brush around the monument and lanes to BT's for ties; corner falls about 80 feet South of center of 15' wide woods road bearing S65°E+/- . I epoxied a stamped 3.5" dia. Oneida County aluminum tablet to the top of monument for centering and identity purposes. This corner previously located per Oneida County GPS records at UTM coordinates: 335011 dE and 5073750 dN. I flagged monuments, T Post, BTs and a line North to road.

In September 1859, William E. Daugherty/GLO did not set this 1/4 corner, as his original field notes indicate it would have fallen into a lake existing at the time; however, during a BLM Resurvey in 1952-53, Hugh B. Crawford noted a concrete monument found as a probable 1/4 corner at this location, per BLM field notes filed as L-367 in Oneida County records.

In 1981, James L. Will/RLS 1410 notes a 5" sq. concrete monument at this 1/4 corner per Plat of Survey filed as B-1090 in Oneida County survey records. In October 1989, Kip W. Soder/RLS 1731 notes a 5" sq. concrete monument found at this 1/4 corner per Plat of Survey filed as B-2083 and again in April 2001 per Plat of Survey filed as A-1035 in Oneida County survey records.

This recovery completed May 18, 2004; there were no direct witnesses.

Plan view map of monument location with bearing and distance ties to a minimum of four(4) described witness or reference monuments of concrete, natural stone, iron, live bearing trees or equivalent material. If applicable, also show a minimum of two(2) bearing and distance ties to any other monument found and not accepted; including the bearing and distance from the accepted monument.

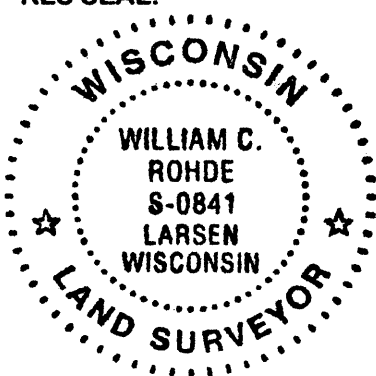


- WITNESS MONUMENT TIES:**
- ① New 6" twin/10" basal trunk Mr BT N78°W 47.52'.
  - ② New 14" Hemlock BT N60°E 31.10'.
  - ③ New 6.5" Mr BT S66°E 18.60'.
  - ④ New 17" Pw BT S06°E 44.90'.

SCALE: 1" = 30'

Unless otherwise indicated, all bearing tree ties are to a .25" dia. by 2.5" long PK nail with a 1.25" dia. steel washer driven into unblazed right face and a .25" dia. by 2.5" long PK nail with a 2" dia. steel washer stamped BT is also driven into unblazed face of bearing tree at DBH; the basis for measured bearings is by compass to nearest degree and all tie distances are measured horizontal by steel tape corrected to nearest 1/100th feet at standard temperature of 68° F.

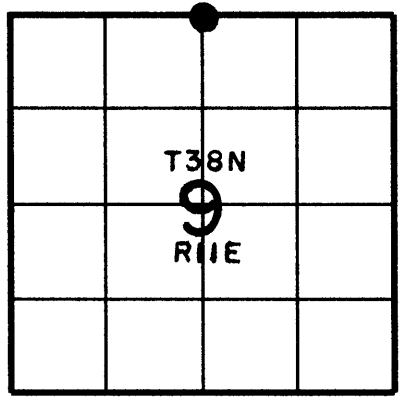
RLS SEAL:



LAND SURVEYOR CERTIFICATE:

I, William C. Rohde, hereby certify that I am duly licensed as a Professional Land Surveyor in the State of Wisconsin; that this USPLS monument location was determined by me and/or under my direct supervision and control; and that this U.S. Public Land Survey Monument Location Record is true and correct to the best of my knowledge and belief.

Signed: *William C. Rohde*  
 William C. Rohde RLS 841



SECTION LOCATION MAP INDEX NO. E 11

Date Signed: September 4, 2004

3811040020